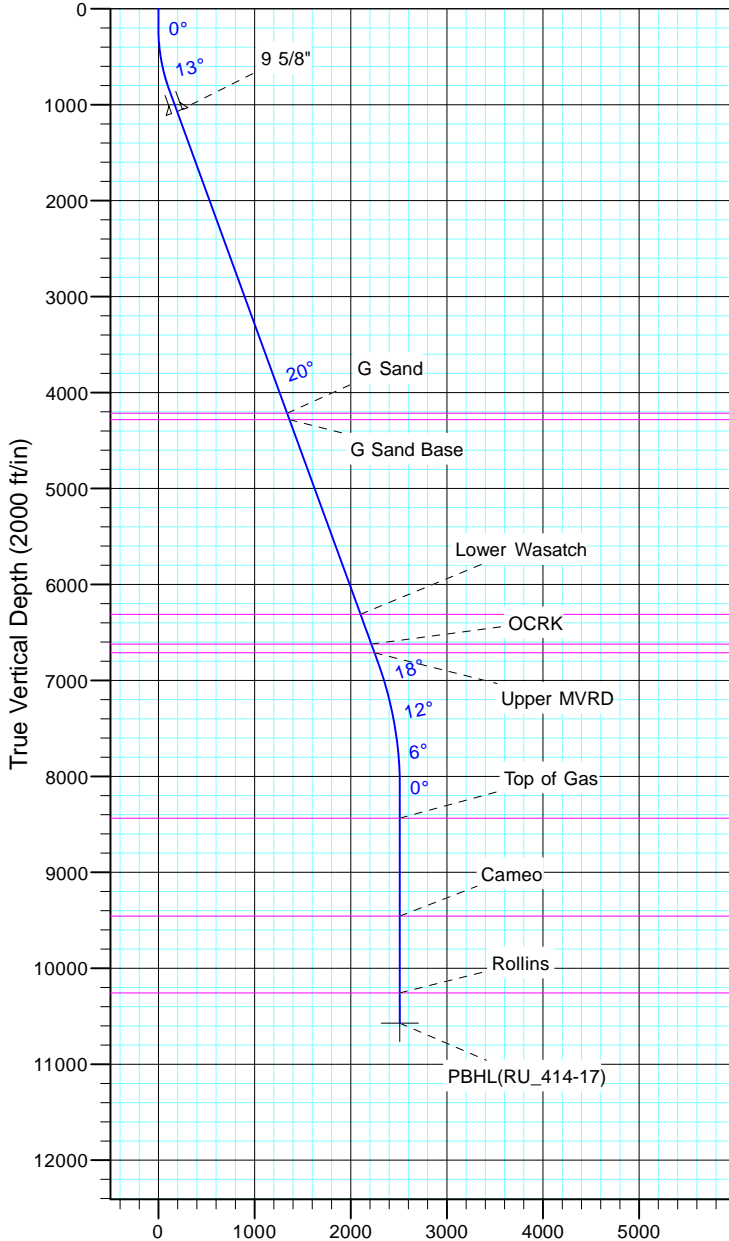


TEP Rocky Mountain LLC  
Project: Garfield County, CO NAD83  
Site: RU 23-17 Pad  
Well: RU 414-17  
Wellbore: OH  
Design: Plan #1



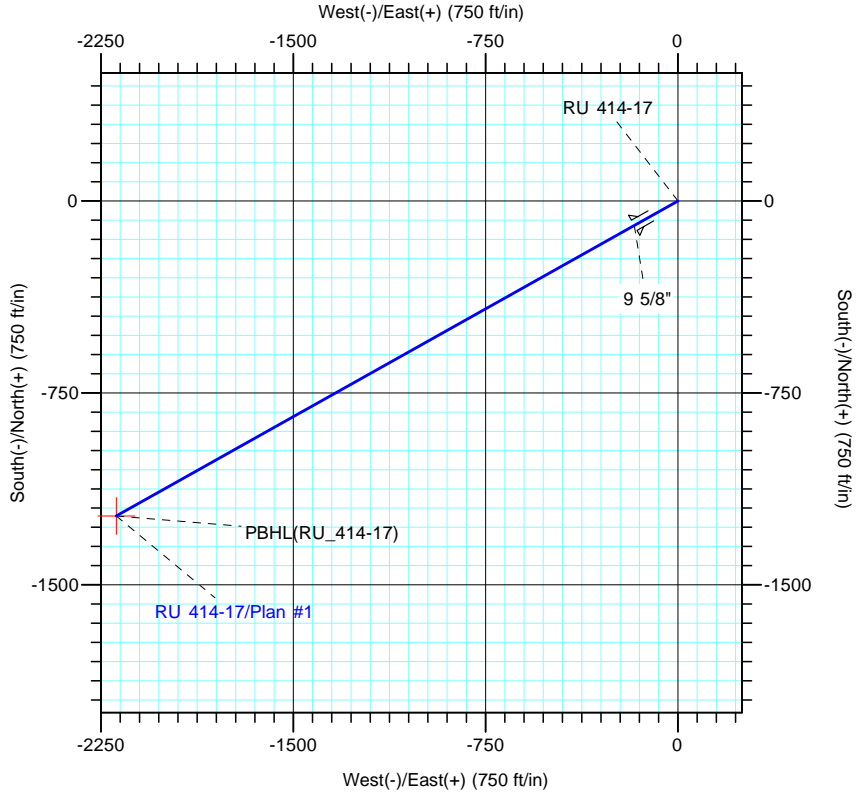
Azimuths to True North  
Magnetic North: 11.35°  
  
Magnetic Field  
Strength: 53028.0snT  
Dip Angle: 65.98°  
Date: 12/31/2004  
Model: IGRF2000



Vertical Section at 240.66° (2000 ft/in)

CASING DETAILS			
TVD	MD	Name	Size
1072.5	1100.0	9 5/8"	9.625

FORMATION TOP DETAILS		
TVDPath	MDPath	Formation
4217.0	4446.3	G Sand
4282.0	4515.5	G Sand Base
6312.0	6675.8	Lower Wasatch
6622.0	7005.6	OCRK
6712.0	7101.4	Upper MVRD
8437.0	8859.3	Top of Gas
9457.0	9879.3	Cameo
10257.0	10679.3	Rollins



DESIGN TARGET DETAILS							
Name	TVD	+N/-S	+E/-W	Northing	Easting	Latitude	Longitude
PBHL(RU_414-17)	10572.0	-1230.9	-2189.7	1593406.30	2349054.40	39° 26' 23.946 N	107° 48' 18.387 W

SECTION DETAILS										
Sec	MD	Inc	Azi	TVD	+N/-S	+E/-W	Dleg	TFace	VSec	Target
1	0.0	0.00	0.00	0.0	0.0	0.0	0.00	0.00	0.0	
2	200.0	0.00	0.00	200.0	0.0	0.0	0.00	0.00	0.0	
3	866.6	20.00	240.66	853.2	-56.4	-100.4	3.00	240.66	115.2	
4	7201.1	20.00	240.66	6805.6	-1118.0	-1988.9	0.00	0.00	2281.6	
5	8534.3	0.00	0.00	8112.0	-1230.9	-2189.7	1.50	180.00	2511.9	
6	10994.3	0.00	0.00	10572.0	-1230.9	-2189.7	0.00	0.00	2511.9	PBHL(RU_414-17)