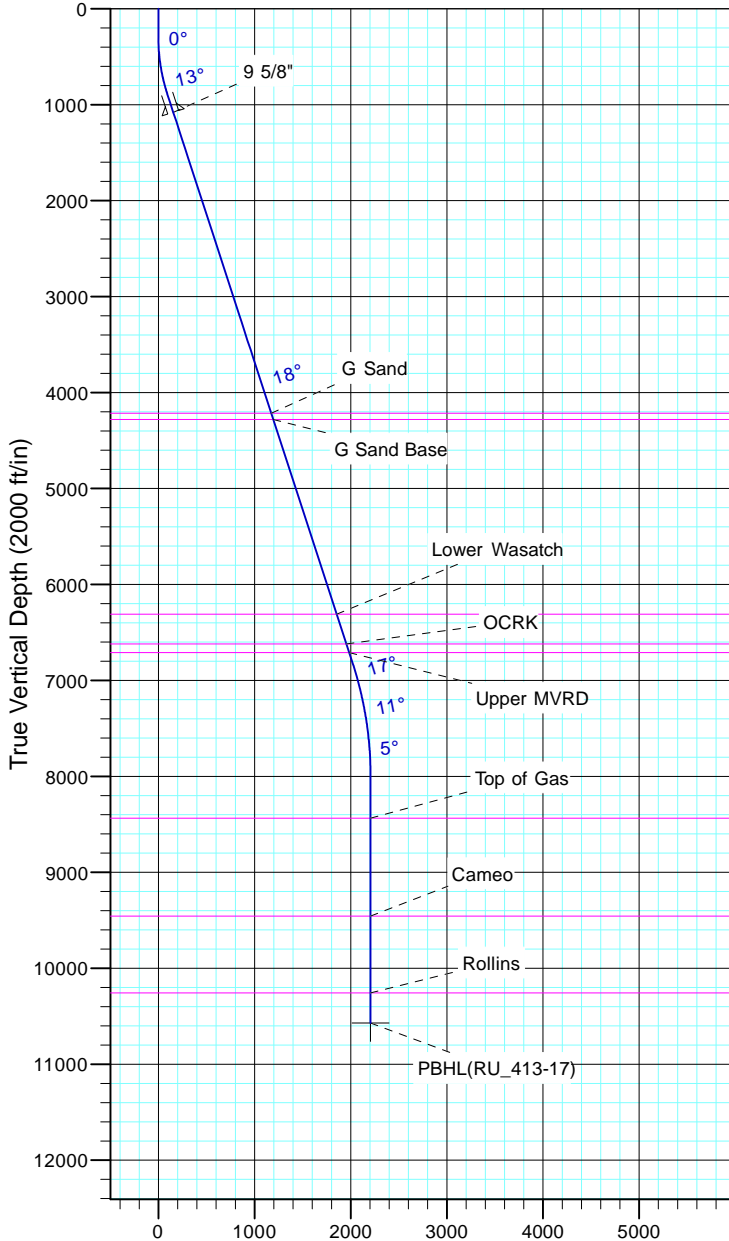


TEP Rocky Mountain LLC  
Project: Garfield County, CO NAD83  
Site: RU 23-17 Pad  
Well: RU 413-17  
Wellbore: OH  
Design: Plan #1



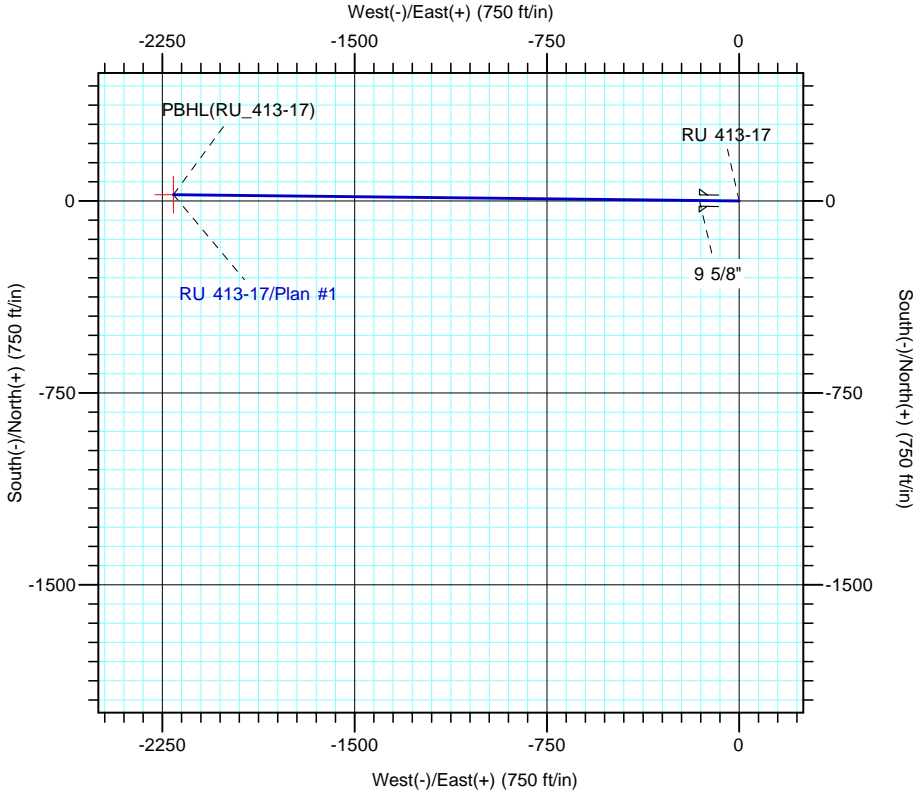
Azimuths to True North  
Magnetic North: 9.60°  
  
Magnetic Field  
Strength: 51501.5snT  
Dip Angle: 65.58°  
Date: 7/5/2017  
Model: IGRF2015



Vertical Section at 270.64° (2000 ft/in)

CASING DETAILS			
TVD	MD	Name	Size
1080.4	1100.0	9 5/8"	9.625

FORMATION TOP DETAILS		
TVDPATH	MDPATH	FORMATION
4216.0	4397.0	G Sand
4281.0	4465.4	G Sand Base
6311.0	6599.9	Lower Wasatch
6621.0	6925.8	OCRK
6711.0	7020.4	Upper MVRD
8436.0	8770.7	Top of Gas
9456.0	9790.7	Cameo
10256.0	10590.7	Rollins



DESIGN TARGET DETAILS						
Name	TVD	+N/-S	+E/-W	Northing	Easting	Latitude
PBHL(RU_413-17)	10571.0	24.8	-2207.4	1594697.40	2349040.60	39° 26' 36.700 N

SECTION DETAILS										
Sec	MD	Inc	Azi	TVD	+N/-S	+E/-W	Dleg	TFace	Vsect	Target
1	0.0	0.00	0.00	0.0	0.0	0.0	0.00	0.00	0.0	
2	300.0	0.00	0.00	300.0	0.0	0.0	0.00	0.00	0.0	
3	900.1	18.00	270.64	890.2	1.0	-93.5	3.00	270.64	93.5	
4	7135.6	18.00	270.64	6820.5	22.7	-2020.5	0.00	0.00	2020.6	
5	8335.7	0.00	0.00	8001.0	24.8	-2207.4	1.50	180.00	2207.6	
6	10905.7	0.00	0.00	10571.0	24.8	-2207.4	0.00	0.00	2207.6	PBHL(RU_413-17)