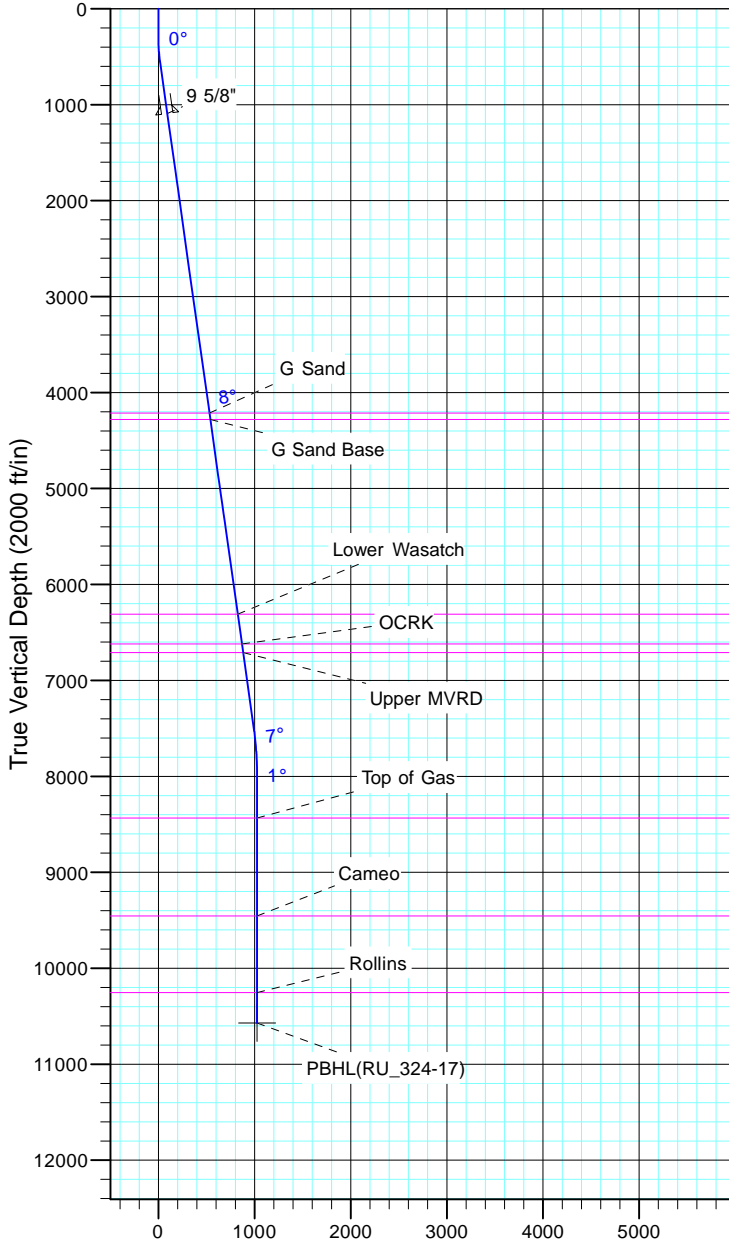


TEP Rocky Mountain LLC  
Project: Garfield County, CO NAD83  
Site: RU 23-17 Pad  
Well: RU 324-17  
Wellbore: OH  
Design: Plan #1



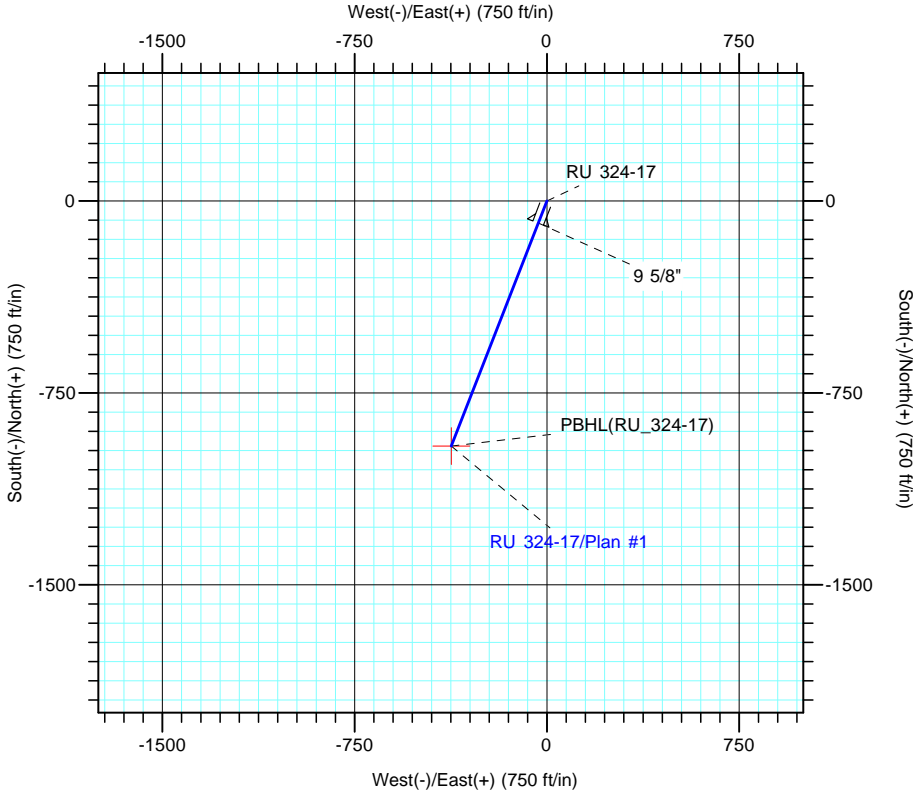
Azimuths to True North  
Magnetic North: 9.60°  
  
Magnetic Field  
Strength: 51501.5nT  
Dip Angle: 65.58°  
Date: 7/5/2017  
Model: IGRF2015



Vertical Section at 201.27° (2000 ft/in)

CASING DETAILS			
TVD	MD	Name	Size
1093.9	1100.0	9 5/8"	9.625

FORMATION TOP DETAILS		
TVDPath	MDPath	Formation
4215.0	4251.7	G Sand
4280.0	4317.4	G Sand Base
6310.0	6367.3	Lower Wasatch
6620.0	6680.4	OCKR
6710.0	6771.3	Upper MVRD
8435.0	8505.6	Top of Gas
9455.0	9525.6	Cameo
10255.0	10325.6	Rollins



Name		DESIGN TARGET DETAILS						
		TVD	+N/-S	+E/-W	Northing	Easting	Latitude	Longitude
PBHL(RU_324-17)		10570.0	-957.9	-373.0	1593657.00	2350871.40	39° 26' 26.878 N	107° 47' 55.315 W

SECTION DETAILS										
Sec	MD	Inc	Azi	TVD	+N/-S	+E/-W	Dleg	TFace	Vsect	Target
1	0.0	0.00	0.00	0.0	0.0	0.0	0.00	0.00	0.0	
2	300.0	0.00	0.00	300.0	0.0	0.0	0.00	0.00	0.0	
3	566.7	8.00	201.27	565.8	-17.3	-6.7	3.00	201.27	18.6	
4	7552.2	8.00	201.27	7483.4	-923.3	-359.5	0.00	0.00	990.8	
5	8085.6	0.00	0.00	8015.0	-957.9	-373.0	1.50	180.00	1028.0	
6	10640.6	0.00	0.00	10570.0	-957.9	-373.0	0.00	0.00	1028.0	PBHL(RU_324-17)