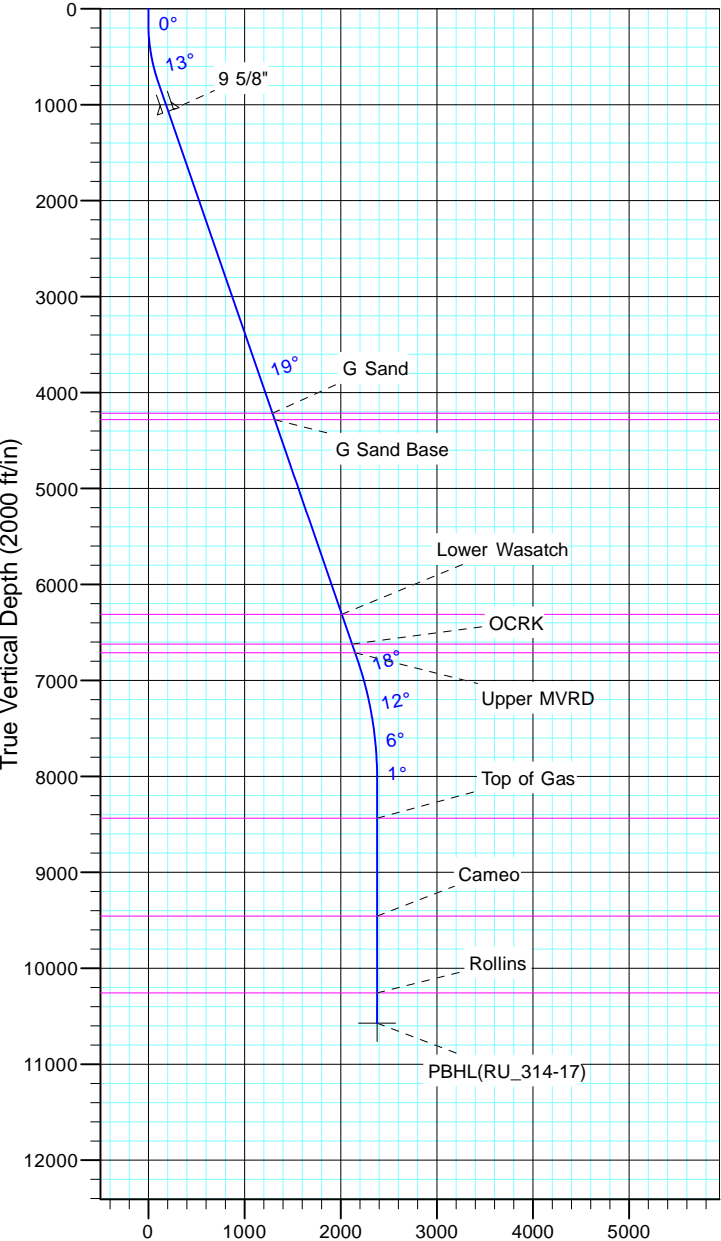


TEP Rocky Mountain LLC
Project: Garfield County, CO NAD83
Site: RU 23-17 Pad
Well: RU 314-17
Wellbore: OH
Design: Plan #1



Azimuths to True North
Magnetic North: 11.35°

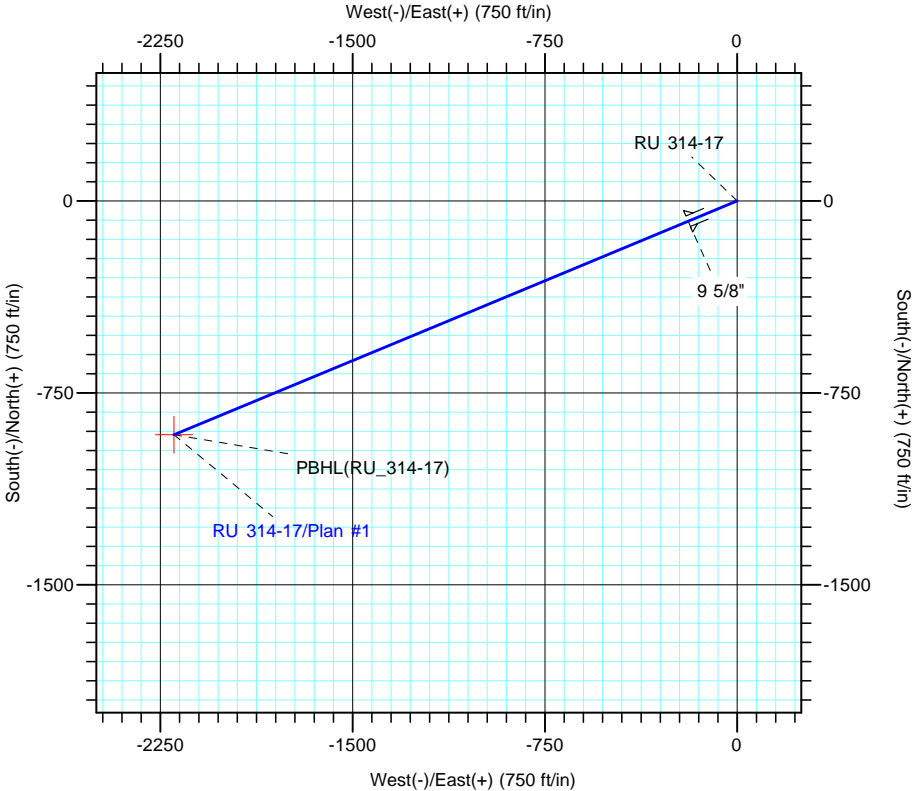
Magnetic Field
Strength: 53028.0snT
Dip Angle: 65.98°
Date: 12/31/2004
Model: IGRF2000



Vertical Section at 247.42° (2000 ft/in)

CASING DETAILS			
TVD	MD	Name	Size
1071.2	1100.0	9 5/8"	9.625

FORMATION TOP DETAILS		
TVDPath	MDPath	Formation
4217.0	4427.1	G Sand
4282.0	4495.9	G Sand Base
6312.0	6642.9	Lower Wasatch
6622.0	6970.7	OCRK
6712.0	7065.9	Upper MVRD
8437.0	8817.6	Top of Gas
9457.0	9837.6	Cameo
10257.0	10637.6	Rollins



Name		TVD	+N/-S	+E/-W	Northing	Easting	Latitude	Longitude
PBHL(RU_314-17)		10572.0	-913.5	-2196.6	1593729.60	2349050.90	39° 26' 27.140 N	107° 48' 18.537 W

SECTION DETAILS										
Sec	MD	Inc	Azi	TVD	+N/-S	+E/-W	Dleg	TFace	VSect	Target
1	0.0	0.00	0.00	0.0	0.0	0.0	0.00	0.00	0.0	
2	150.0	0.00	0.00	150.0	0.0	0.0	0.00	0.00	0.0	
3	783.4	19.00	247.42	771.9	-40.0	-96.1	3.00	247.42	104.1	
4	7130.7	19.00	247.42	6773.3	-833.6	-2004.4	0.00	0.00	2170.8	
5	8397.6	0.00	0.00	8017.0	-913.5	-2196.6	1.50	180.00	2379.0	
6	10952.6	0.00	0.00	10572.0	-913.5	-2196.6	0.00	0.00	2379.0	PBHL(RU_314-17)