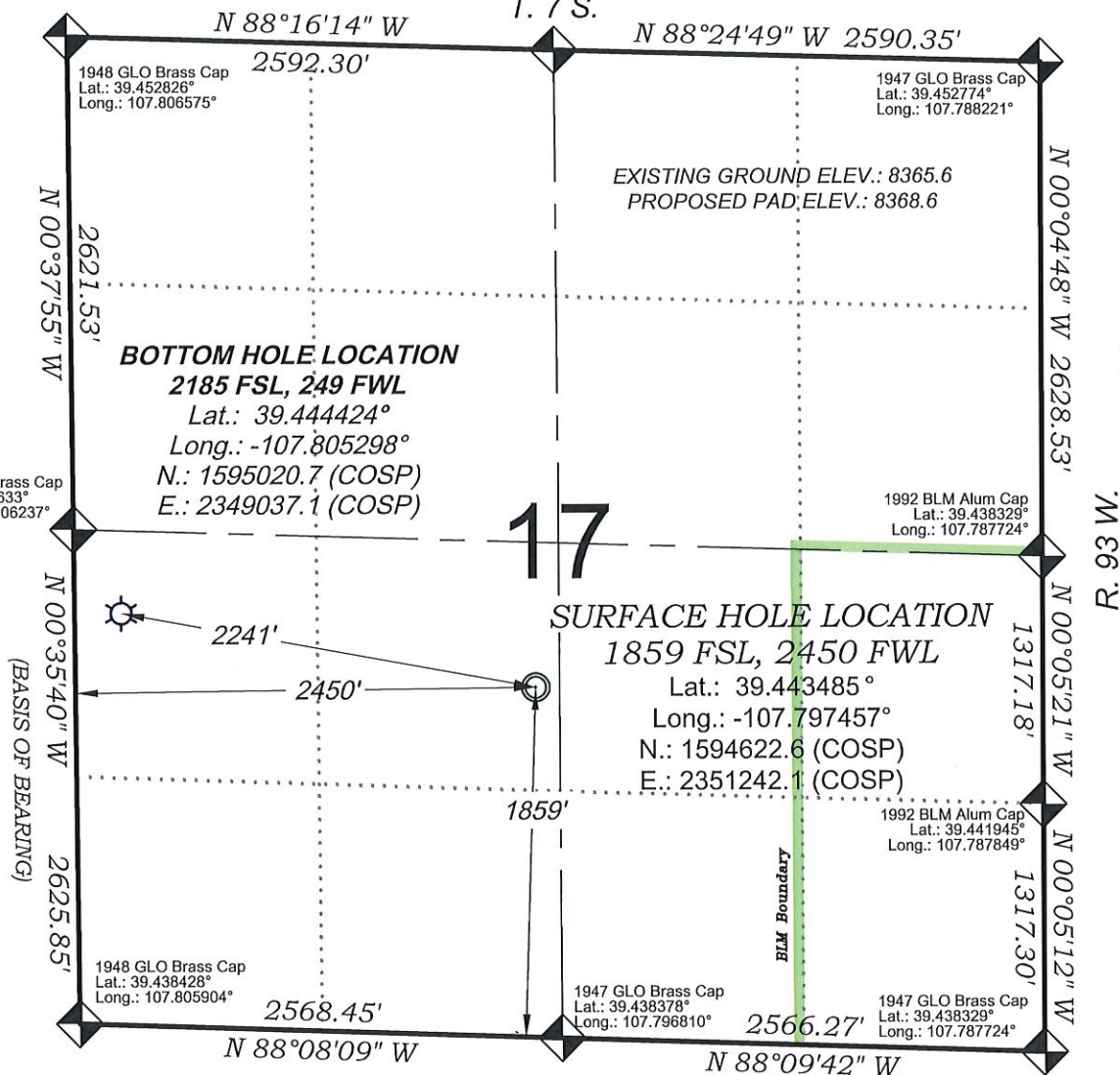


Federal RU 313-17

T. 7 S.



0 500 1000
GRAPHIC SCALE IN FEET
1 INCH = 1000 FEET

THERE ARE NO VISIBLE
IMPROVEMENTS WITHIN 500'
OF THIS LOCATION

SURVEYORS STATEMENT

I, MICHAEL J. LANGHORNE, A REGISTERED LAND SURVEYOR IN THE STATE OF COLORADO DO HEREBY CERTIFY THAT THE SURVEY SHOWN HEREON WAS PREPARED UNDER MY DIRECT SUPERVISION AND HAS BEEN STAKED ON THE GROUND AS SHOWN ON THE PLAT AND CHECKING THAT THIS MAP IS A TRUE REPRESENTATION THEREOF.

MICHAEL J. LANGHORNE, COLORADO REGISTRATION NO. 36572
FOR AND ON BEHALF OF
BOOKCLIFF SURVEY SERVICES, INC.

REFERENCES

- 1) RE-SURVEY T. 7 S., R. 93 W., 6th P.M (BLM PLAT)
- 2) U.S.G.S. QUAD: North Mamm Peak, CO

REVISED: 7/21/17

136 East Third Street
Rifle, Colorado
81650 Ph. (970)
625-2720 Fax (970)
625-2773

BOOKCLIFF
Survey Services, Inc.

SURVEY DATE: 1/14/14
MAP DATE: 6/16/16
SCALE: 1" = 1000'
PLAT: 1 of 1
PROJECT: Valley

- LEGEND -

- FIELD LOCATED SECTION MONUMENTS AS DESCRIBED
- FIELD SURVEYED WELL LOCATION
- CALCULATED BOTTOM HOLE LOCATION
- CALCULATED SECTION CORNER LOCATION

NOTES

- 1) ELEVATIONS BASED ON N.A.V.D. 1988 PUBLISHED COORDINATES.
- 2) LATITUDES AND LONGITUDES ARE BASE ON NAD 83, PUBLISHED COORDINATES
- 3) STATE PLANE COORDINATES ARE BASED ON COLORADO CENTRAL ZONE, U.S. SURVEY FEET.
- 4) ELEVATION MASK SET TO 15"
- 5) GPS OPERATOR J. KIRKPATRICK, OBSERVED A PDOP 2.58 ON SURVEY POINT NUMBER 388.
- 6) SURFACE AND BOTTOM HOLE LOCATIONS ARE MEASURED 90° FROM SECTION LINES.

WELL LOCATION PLAT Prepared for:



TEP Rocky Mountain LLC

NE1/4 SW1/4, SECTION 17
T. 7 S., R. 93 W. of the 6th. P.M.
GARFIELD COUNTY, COLORADO