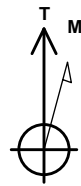


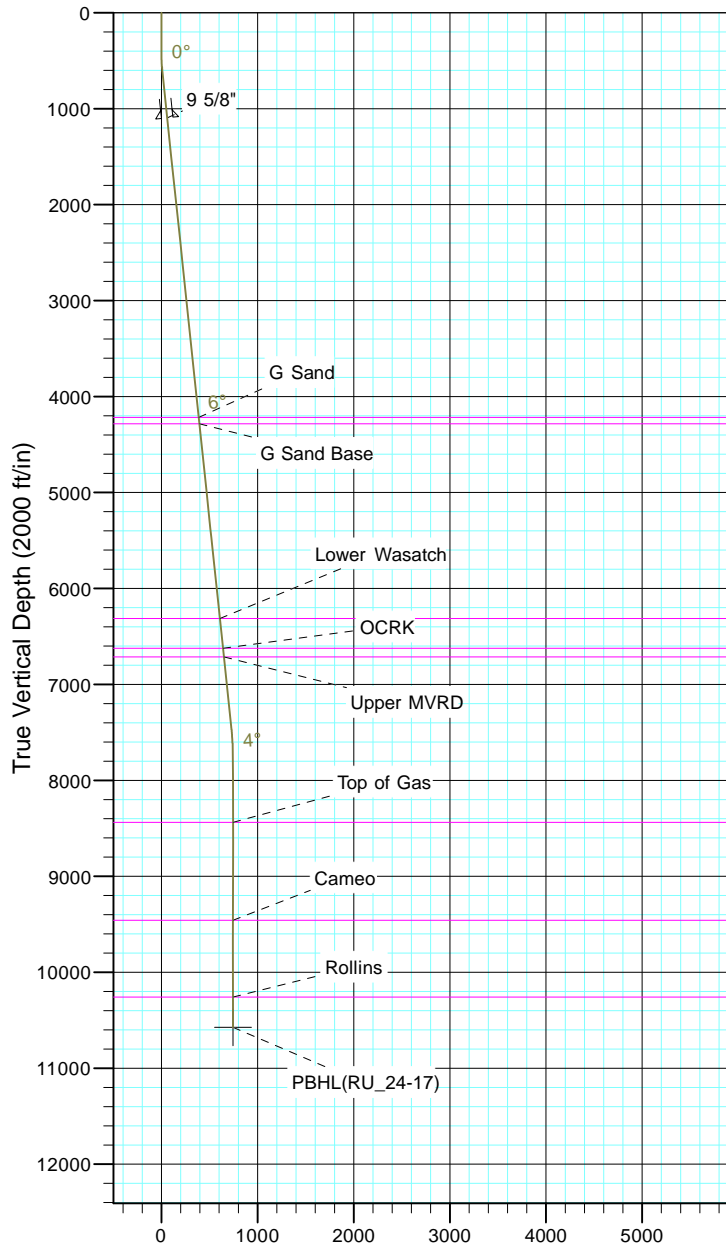
TEP Rocky Mountain LLC

Project: Garfield County, CO NAD83
Site: RU 23-17 Pad
Well: RU 24-17
Wellbore: OH
Design: Plan #1



Azimuths to True North
Magnetic North: 9.60°

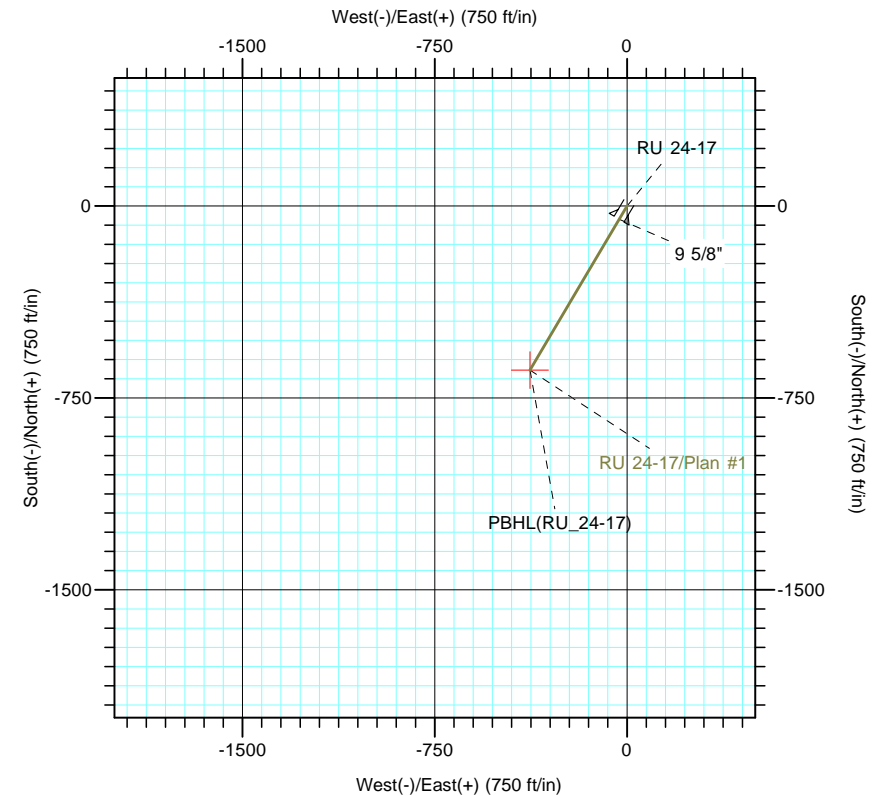
Magnetic Field
Strength: 51501.5nT
Dip Angle: 65.58°
Date: 7/5/2017
Model: IGRF2015



Vertical Section at 210.58° (2000 ft/in)

CASING DETAILS			
TVD	MD	Name	Size
1097.0	1100.0	9 5/8"	9.625

FORMATION TOP DETAILS		
TVDPath	MDPath	Formation
4219.0	4239.1	G Sand
4284.0	4304.5	G Sand Base
6314.0	6345.7	Lower Wasatch
6624.0	6657.4	OCRK
6714.0	6747.9	Upper MVRD
8439.0	8477.5	Top of Gas
9459.0	9497.5	Cameo
10259.0	10297.5	Rollins



Name	TVD	+N/-S	DESIGN TARGET DETAILS			Latitude	Longitude
			+E/-W	Northing	Easting		
PBHL(RU_24-17)	10574.0	-641.6	-379.2	1593979.30	2350868.50	39° 26' 30.062 N	107° 47' 55.456 W

SECTION DETAILS										
Sec	MD	Inc	Azi	TVD	+N/-S	+E/-W	Dleg	TFace	Vsect	Target
1	0.0	0.00	0.00	0.0	0.0	0.0	0.00	0.00	0.0	
2	400.0	0.00	0.00	400.0	0.0	0.0	0.00	0.00	0.0	
3	639.9	6.00	210.58	639.5	-10.8	-6.4	2.50	210.58	12.5	
4	7452.6	6.00	210.58	7414.9	-623.6	-368.6	0.00	0.00	724.4	
5	7852.5	0.00	0.00	7814.0	-641.6	-379.2	1.50	180.00	745.3	
6	10612.5	0.00	0.00	10574.0	-641.6	-379.2	0.00	0.00	745.3	PBHL(RU_24-17)