



August 9, 2017

Mr. Matt Lepore, Director
Colorado Oil and Gas Conservation Commission
The Chancery Building
1120 Lincoln Street, Suite 801
Denver, CO 80203

RE: Anschutz-Williams 5-61-27-0108BNB (doc #401337037)
Township 5 North, Range 61 West, 6th P.M.
Section 27: S W S W (surface location)
Weld County, Colorado

Proposed Wellbore Unit (640 acres):

Township 5 North, Range 61 West, 6th P.M.
Section 26- N2N2
Section 27- N2N2
Township 5 North, Range 61 West, 6th P.M.
Section 22- S2S2
Section 23- S2S2

Dear Mr. Lepore:

Bill Barrett Corporation ("BBC") is planning to drill the captioned boundary well in accordance with the provisions of COGCC 318A.e.

BBC's wellbore spacing unit consists of Section 26- N2N2, Section 27- N2N2 of T5N-61W and Section 22- S2S2, Section 23- S2S2 of T5N-61W, creating the above referenced spacing unit in which we will target the Niobrara formation. I certify that all of the owners within the proposed wellbore spacing unit were noticed and no objections were received.

Enclosed is a copy of the following document to assist you in your review and approval of BBC's proposed changes for the captioned well.

- Plat illustrating the proposed wellbore spacing unit on existing location plat

Thank you for your attention to the enclosed. BBC respectfully requests that the COGCC review the enclosed information and approve the proposed changes for the captioned well.

BILL BARRETT CORPORATION

A handwritten signature in blue ink that reads "Matt Barber".

Matt Barber
Sr. Permit Analyst

1099 18th Street, Suite
2300
Denver, CO 80202
P 303.293.9100
F 303.291.0420

T5N, R61W, 6th P.M.

BILL BARRETT CORPORATION

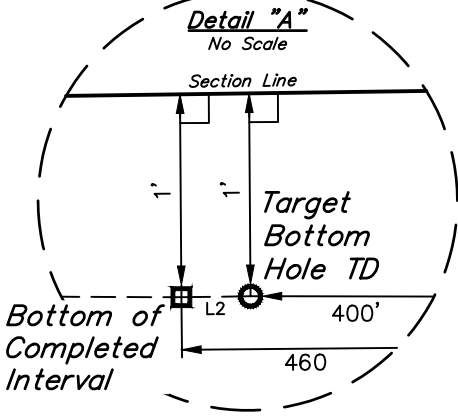
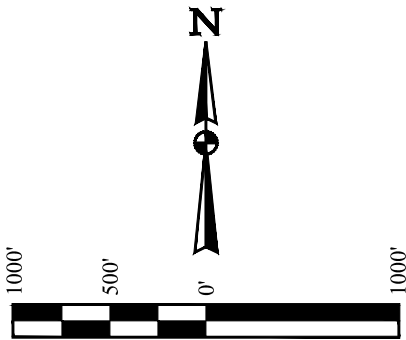
ANSCHUTZ-WILLIAMS 5-61-27 NWNW PAD
ANSCHUTZ-WILLIAMS #5-61-27-0108BNB
NW 1/4 NW 1/4, SECTION 27, T5N, R61W, 6th P.M.
WELD COUNTY, COLORADO

BASIS OF BEARINGS

BASIS OF BEARINGS IS A G.P.S. OBSERVATION

BASIS OF ELEVATION

SPOT ELEVATION LOCATED AT THE NORTHEAST CORNER OF SECTION 24, T5N, R62W, 6th P.M. TAKEN FROM THE POINT OF ROCKS, QUADRANGLE, COLORADO, WELD COUNTY, 7.5 MINUTE QUAD (TOPOGRAPHIC MAP) PUBLISHED BY THE UNITED STATES DEPARTMENT OF THE INTERIOR, GEOLOGICAL SURVEY. SAID ELEVATION IS MARKED AS BEING 4530 FEET.



CERTIFICATE

THIS IS TO CERTIFY THAT THE ABOVE PLAT WAS PREPARED FROM FIELD NOTES OF ACTUAL SURVEYS MADE BY ME OR UNDER MY SUPERVISION AND THAT THE SAME ARE TRUE AND CORRECT TO THE BEST OF MY KNOWLEDGE AND BELIEF.

REGISTERED LAND SURVEYOR
REGISTRATION NO. 28285
STATE OF COLORADO
EXPIRATION DATE 06-15-17

PDOP = 1.2

REV: 1 06-15-17 D.COX (LP & BHL CHANGE)

LEGEND:

- 90° SYMBOL
- PROPOSED WELLHEAD.
- LANDING POINT.
- BOTTOM OF COMPLETED INTERVAL.
- TARGET BOTTOM HOLE TD.
- SECTION CORNERS LOCATED. (NAD 83)

NAD 83 (SURFACE LOCATION)	NAD 83 (LANDING POINT)	NAD 83 (BTM. OF COMPLETED INT.)	NAD 83 (TARGET BOTTOM HOLE TD)
LATITUDE = 40°22'35.02" (40.376394)	LATITUDE = 40°22'44.05" (40.378903)	LATITUDE = 40°22'45.81" (40.379392)	LATITUDE = 40°22'45.81" (40.379392)
LONGITUDE = 104°12'12.96" (104.203600)	LONGITUDE = 104°12'10.56" (104.202933)	LONGITUDE = 104°10'04.57" (104.167936)	LONGITUDE = 104°10'03.80" (104.167722)
NAD 27 (SURFACE LOCATION)	NAD 27 (LANDING POINT)	NAD 83 (BTM. OF COMPLETED INT.)	NAD 27 (TARGET BOTTOM HOLE TD)
LATITUDE = 40°22'35.08" (40.376411)	LATITUDE = 40°22'44.12" (40.378922)	LATITUDE = 40°22'45.87" (40.379408)	LATITUDE = 40°22'45.87" (40.379408)
LONGITUDE = 104°12'11.14" (104.203094)	LONGITUDE = 104°12'08.74" (104.202428)	LONGITUDE = 104°10'02.75" (104.167431)	LONGITUDE = 104°10'01.97" (104.167214)
STATE PLANE NAD 83 (CO. NORTH)	STATE PLANE NAD 83 (CO. NORTH)	STATE PLANE NAD 83 (CO. NORTH)	STATE PLANE NAD 83 (CO. NORTH)
N: 1382600.67 E: 3361173.53	N: 1383517.77 E: 3361346.29	N: 1383839.96 E: 3371092.34	N: 1383840.84 E: 3371152.32
STATE PLANE NAD 27 (CO. NORTH)	STATE PLANE NAD 27 (CO. NORTH)	STATE PLANE NAD 27 (CO. NORTH)	STATE PLANE NAD 27 (CO. NORTH)
N: 382602.43 E: 2361323.93	N: 383519.50 E: 2361496.70	N: 383841.63 E: 2371243.01	N: 383842.52 E: 2371302.99



UELS, LLC
Corporate Office * 85 South 200 East
Vernal, UT 84078 * (435) 789-1017

SURVEYED BY	GREG WEIMER, N.P.	01-12-17	SCALE
DRAWN BY	J.J.	04-17-17	1" = 1000'

WELL LOCATION PLAT