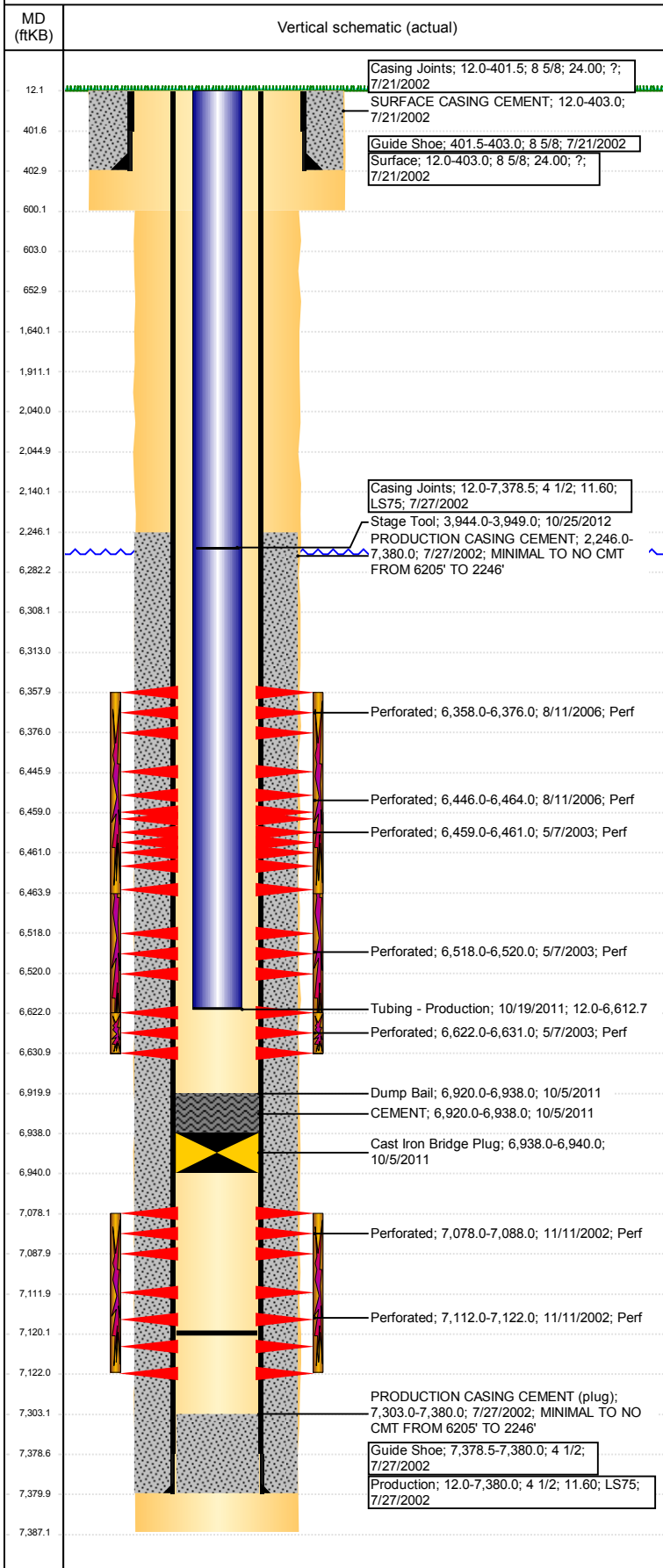


**Well Name: WELLS 44-15**

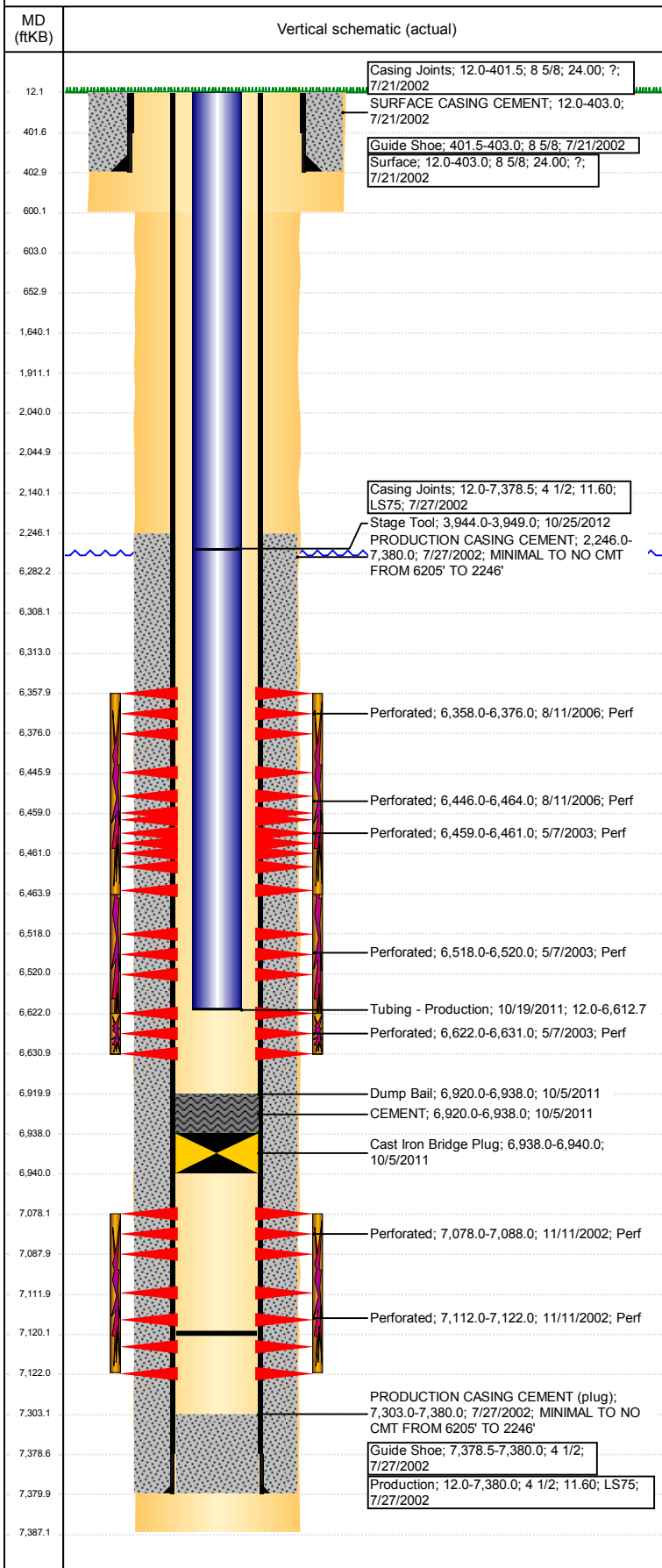
VERTICAL - ORIGINAL HOLE, 8/29/2017 4:29:50 PM



Well Header							
API 05-123-20890	Business Unit DJ BASIN		District 15		Well Config VERTICAL		
Original KB Elevation (ft) 4,672	KB - GL / MSL (ftKB) 12.00		Spud Date 7/21/2002		P & A Date		
Comment CIBP @ +/-6735'							
Directions To Well WCR 67 & WCR 68, EAST 0.2 MILES, S 2.6 MILES TO COW CAMP, SW 0.5 MILES, S 1.0 MILE, SE 1.0 MILE, S 0.8 MILES, SE 0.1 MILE INTO LOCATION.							
Congressional Location							
Quarter 3 SE	Quarter 4 SE	Section 15	Township 5	Twntshp N/S Dir N	Range 63	Range E/W Dir W	
Bottom Hole Location							
North-South Distance (ft)		From N or S Line		East-West Distance (ft)		From E or W Line	
Plug Back Total Depths							
Date	Depth (ftKB)	Method		Com			
8/27/2002	7,303.0	CASED HOLE LOG		DEPTH LOGGER ON CBL			
9/18/2006	6,735.0	TAG		CIBP 102' BELOW CODELL PERFS			
9/8/2011	6,735.0	TUBING TALLY		CLEAN OUT PRIOR TO CODELL REFRAC			
10/5/2011	7,120.0	TUBING TALLY		RUN BIT AND SCRAPER, TAG CIBP (FAILED BUT...			
Wellbore Sections							
Section Des		Size (in)		Act Top, MD (ftKB)		Act Btm, MD (ftKB)	
SURFACE		12 1/4		12		600	
PRODUCTION		7 7/8		600		7,387	
Zone Statuses							
Zone Name	Status Date	Status	Fluid Type	Job	Prod Method		
NIOBRARA	5/14/2003	PR	Water	RECOMPLETI...	Flowing		
NIOBRARA	6/3/2003	PR		RECOMPLETI...			
NIOBRARA	8/25/2006	PR		RE-FRAC, 8/9/...			
NIOBRARA	1/6/2010	PR					
NIOBRARA	9/19/2011	PR					
CODELL	5/14/2003	PR	Water	RECOMPLETI...	Flowing		
CODELL	6/3/2003	PR		RECOMPLETI...			
CODELL	1/6/2010	PR					
CODELL	10/24/2011	PR		RE-FRAC, 9/6/...			
J SAND	12/30/2002	PR		DRILLING/CO...			
J SAND	5/1/2003	SI		RECOMPLETI...			
J SAND	6/3/2003	PR		RECOMPLETI...			
J SAND	9/18/2006	AB		RE-FRAC, 8/9/...			
Casing Strings							
Surface, 403.0ftKB							
Casing Description Surface	Run Date 7/21/2002	OD (in) 8 5/8	Wt/Len (l...) 24.00	Grade ?	Top, MD (ft...) 12.0	MD (ftKB) 403.0	
Production, 7,380.0ftKB							
Casing Description Production	Run Date 7/27/2002	OD (in) 4 1/2	Wt/Len (l...) 11.60	Grade LS75	Top, MD (ft...) 12.0	MD (ftKB) 7,380.0	
Cement							
Description SURFACE CASING CEMENT				Top Depth (ftKB) 12.0		Bottom Depth (ftKB) 403.0	
Description PRODUCTION CASING CEMENT				Top Depth (ftKB) 2,246.0		Bottom Depth (ftKB) 7,380.0	
Description Dump Bail				Top Depth (ftKB) 6,920.0		Bottom Depth (ftKB) 6,938.0	
Description Dump Bail				Top Depth (ftKB) 6,282.0		Bottom Depth (ftKB) 6,308.0	
Description Cement Plug				Top Depth (ftKB) 603.0		Bottom Depth (ftKB) 653.0	
Description Cement Plug				Top Depth (ftKB) 12.0		Bottom Depth (ftKB) 603.0	
Description Remedial Casing Cement				Top Depth (ftKB) 1,640.0		Bottom Depth (ftKB) 2,140.0	
Description Cement Plug				Top Depth (ftKB) 2,045.0		Bottom Depth (ftKB) 2,140.0	
Description Cement Plug				Top Depth (ftKB) 1,911.0		Bottom Depth (ftKB) 2,040.0	
Tubing Strings							
Tubing Description Tubing	Run Date 9/19/2006	String... 2 3/8	ID (in) 2.00	Wt (lb/ft) 4.70	Grade J-55	Len (ft) 6,574.22	Set De...

**Well Name: WELLS 44-15**

VERTICAL - ORIGINAL HOLE, 8/29/2017 4:29:51 PM



Tubing Strings							
Tubing Description	Run Date	String...	ID (in)	Wt (lb/ft)	Grade	Len (ft)	Set De...
Tubing - Frac string	9/8/2011	2 7/8	2.44	6.50	N-80	6,550.42	
Tubing Description	Run Date	String...	ID (in)	Wt (lb/ft)	Grade	Len (ft)	Set De...
Tubing - Frac string	10/6/2011	2 7/8	2.44	6.50	N-80	6,561.03	
Tubing Description	Run Date	String...	ID (in)	Wt (lb/ft)	Grade	Len (ft)	Set De...
Tubing - Production	10/19/2011	2 3/8	2.00	4.70	J-55	6,600.70	

Other In Hole				
Run Date	Des	OD (in)	Top (ftKB)	Btm (ftKB)
10/5/2011	Cast Iron Bridge Plug	3.99	6,938.0	6,940.0
10/5/2011	CEMENT	3.99	6,920.0	6,938.0
6/5/2017	Cast Iron Bridge Plug	3.99	6,308.0	6,313.0
6/5/2017	Cement Retainer	3.99	2,040.0	2,045.0

Logs			
Date	Type	Top, MD (ftKB)	Btm, MD (ftKB)
7/26/2002	COMPENSATED DENSITY	12.0	7,387.0
8/27/2002	CEMENT BOND	2,015.0	7,300.0

Perforation Data					
Linked Zone	Bnch/St g	Sum of Entered Shot Total	Top (ftKB)	Btm (ftKB)	Date
NIOBRARA, ORIGINAL HOLE	A	4	2,140.00	2,140.00	6/5/2017
NIOBRARA, ORIGINAL HOLE	B	108	6,358.00	6,376.00	8/11/2006
NIOBRARA, ORIGINAL HOLE	B	108	6,446.00	6,464.00	8/11/2006
NIOBRARA, ORIGINAL HOLE	B	2	6,459.00	6,461.00	5/7/2003
NIOBRARA, ORIGINAL HOLE	C	2	6,518.00	6,520.00	5/7/2003
CODELL, ORIGINAL HOLE		36	6,622.00	6,631.00	5/7/2003
J SAND, ORIGINAL HOLE		40	7,078.00	7,088.00	11/11/2002
J SAND, ORIGINAL HOLE		40	7,112.00	7,122.00	11/11/2002

<b>Total (Sum)</b>	<b>340</b>			
--------------------	------------	--	--	--

Stimulation Intervals			
Start Date 11/12/2002		Primary Job Type	
Technical Result		Tech Result Details	Tech Result Note
Comment			
Start Date 8/21/2006		Primary Job Type	
Technical Result		Tech Result Details	Tech Result Note
Comment			
Start Date 9/28/2011		Primary Job Type	
Technical Result Failure		Tech Result Details Mechanical	Tech Result Note
Comment (CODELL) FAILED TO FRAC CODELL. JOB WAS DELAYED FOR 1.5 HOURS FOR NEW TMV. UPON BREAKDOWN TUBING PRESSURE, VARIFIED BY BOTH TRANSDUCERS AND PUMPS, FLUCCTUATED BETWEEN 2800 AND 400 PSI. SWITCHED TO LINEAR AND ISIP WAS SEEN AT 911 PSI AND 5 MIN WAS 27 PSI. IT IS BELIEVED THE FLUCCTUATION IS FROM THE CIBP BEING DISLODGED AND PUMPING INTO J-SAND. SEND SWAB RIG TO VERIFY.			
Start Date 10/12/2011		Primary Job Type	
Technical Result Success		Tech Result Details According to Plan	Tech Result Note
Comment			
Start Date 5/7/2003		Primary Job Type	
Technical Result		Tech Result Details	Tech Result Note
Comment CDL/NIO LIMITED ENTRY			