

LEGEND:

 PROPOSED LOCATION



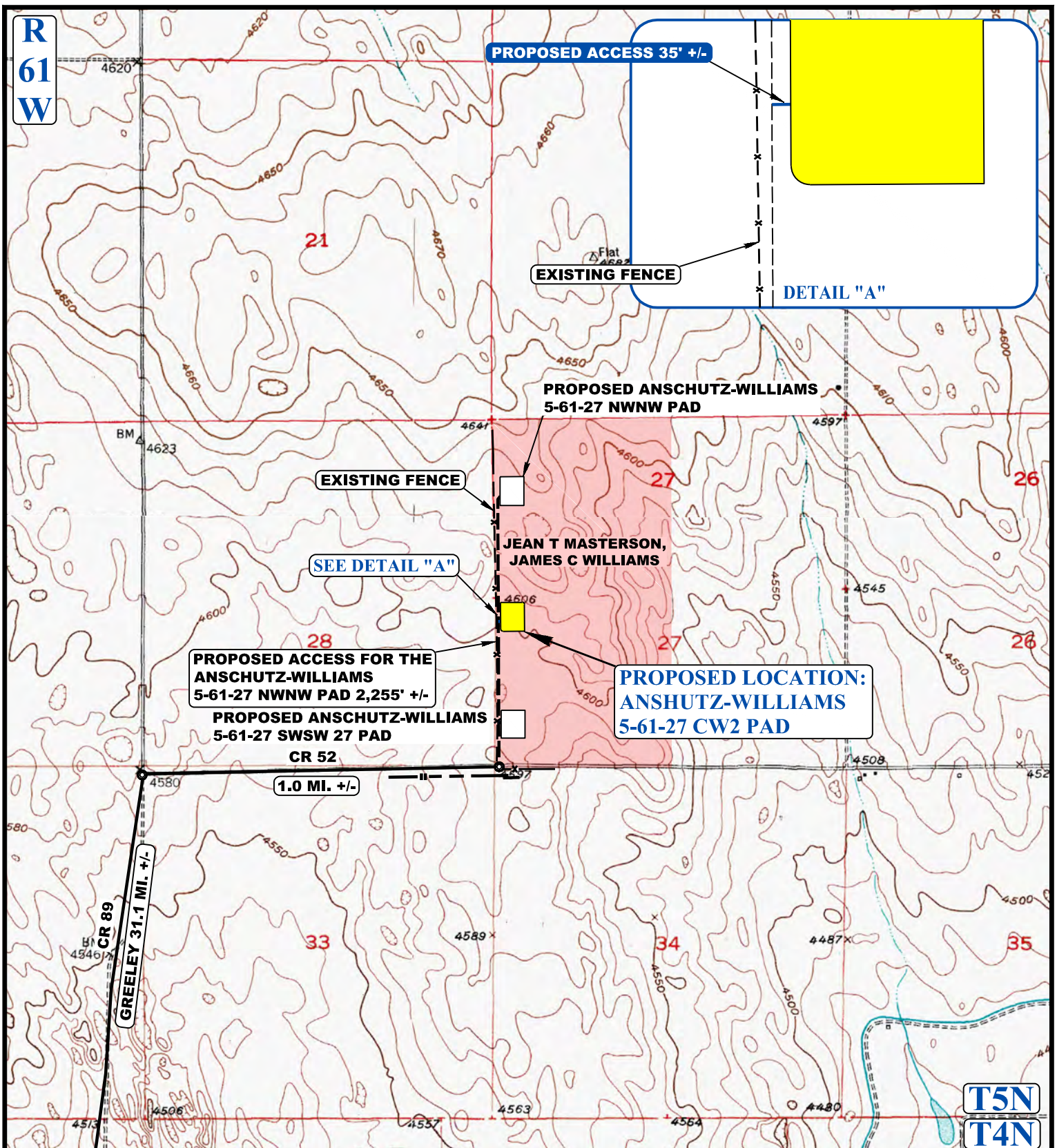
UELS, LLC
Corporate Office * 85 South 200 East
Vernal, UT 84078 * (435) 789-1017



BILL BARRETT CORPORATION

ANSCHUTZ-WILLIAMS 5-61-27 CW2 PAD
NW 1/4 SW 1/4, SECTION 27, T5N, R61W, 6th P.M.
WELD COUNTY, COLORADO

SURVEYED BY	N.P., G.W.	01-13-17	SCALE
DRAWN BY	J.L.G.	04-17-17	1 : 100,000
ACCESS ROAD MAP			TOPO A



NOTE: PARCEL DATA SHOWN HAS BEEN OBTAINED FROM VARIOUS SOURCES AND SHOULD BE USED FOR MAPPING, GRAPHIC AND PLANNING PURPOSES ONLY. NO WARRANTY IS MADE BY UINTAH ENGINEERING AND LAND SURVEYING (UELS) FOR ACCURACY OF THE PARCEL DATA.

LEGEND:

- EXISTING ROAD
- - - - - PROPOSED ROAD
- - - - - PROPOSED ROAD (SERVICING OTHER WELLS)



BILL BARRETT CORPORATION

ANSCHUTZ-WILLIAMS 5-61-27 CW2 PAD
NW 1/4 SW 1/4, SECTION 27, T5N, R61W, 6th P.M.
WELD COUNTY, COLORADO

SURVEYED BY	N.P., G.W.	01-13-17	SCALE
DRAWN BY	J.L.G.	04-17-17	1 : 24,000
ACCESS ROAD MAP			TOPO B



UELS, LLC
 Corporate Office * 85 South 200 East
 Vernal, UT 84078 * (435) 789-1017