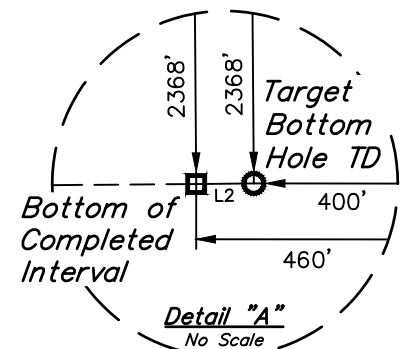


**BILL BARRETT CORPORATION**

## BASIS OF BEARINGS

### BASIS OF ELEVATION



**CERTIFICATE**  
THE ABOVE DEED WAS PREPARED FROM FILED  
RECORDS MADE BY ME OR UNDER MY SUPERVISION  
AND IS TRUE AND CORRECT TO THE BEST OF MY  
KNOWLEDGE.

REGISTERED LAND SURVEYOR  
REGISTRATION NO. 28285  
STATE OF COLORADO

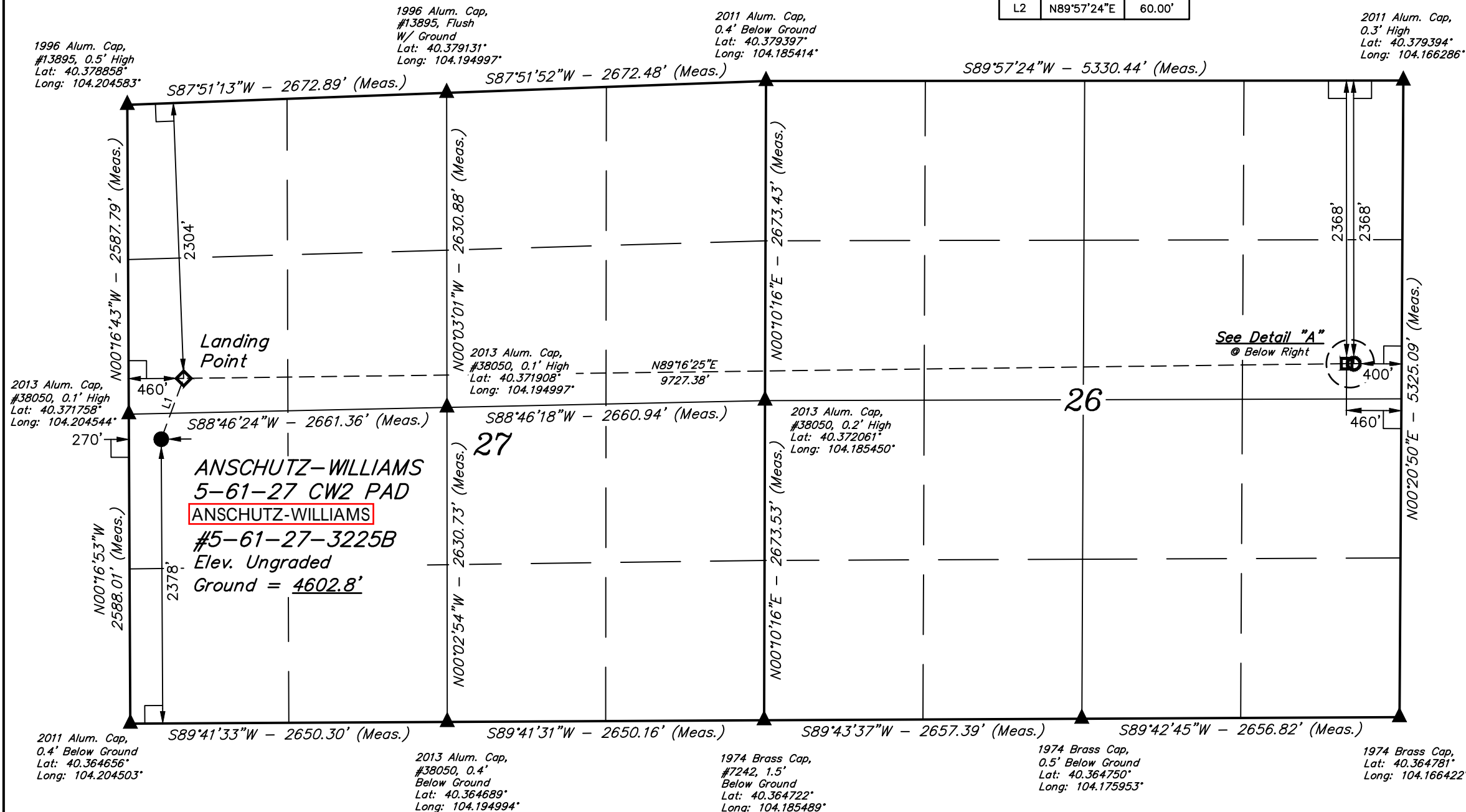
**UELS, LLC**  
Corporate Office \* 85 South 200 East  
Vernal, UT 84078 \* (435) 789-1017



<b>SURVEYED BY</b>	NIGEL POLL, G.W.	01-13-17	<b>SCALE</b>
<b>DRAWN BY</b>	C.C.	04-19-17	1" = 1000'

# WELL LOCATION PLAT







LINE TABLE		
LINE	DIRECTION	LENGTH
L1	N20°13'51"E	541.95'
L2	N89°57'24"E	60.00'



**PDOP = 1.5**

REV: 1 06-15-17 D.COX (LP & BHL CHANGE)

LEGEND:

-  = 90° SYMBOL  
 = PROPOSED WELLHEAD.  
 = LANDING POINT.  
 = BOTTOM OF COMPLETED INTERVAL.  
 = TARGET BOTTOM HOLE TD.  
 = SECTION CORNERS  
 LOCATED. (NAD 83)

<b>NAD 83 (SURFACE LOCATION)</b>	<b>NAD 83 (LANDING POINT)</b>	<b>NAD 83 (BTM. OF COMPLETED INT.)</b>	<b>NAD 83 (TARGET BOTTOM HOLE TD)</b>
LATITUDE = 40°22'16.27" (40.371186)	LATITUDE = 40°22'21.29" (40.372581)	LATITUDE = 40°22'22.42" (40.372894)	LATITUDE = 40°22'22.42" (40.372894)
LONGITUDE = 104°12'12.86" (104.203572)	LONGITUDE = 104°12'10.43" (104.202897)	LONGITUDE = 104°10'04.79" (104.167997)	LONGITUDE = 104°10'04.01" (104.167781)
<b>NAD 27 (SURFACE LOCATION)</b>	<b>NAD 27 (LANDING POINT)</b>	<b>NAD 83 (BTM. OF COMPLETED INT.)</b>	<b>NAD 27 (TARGET BOTTOM HOLE TD)</b>
LATITUDE = 40°22'16.33" (40.371203)	LATITUDE = 40°22'21.35" (40.372597)	LATITUDE = 40°22'22.49" (40.372914)	LATITUDE = 40°22'22.49" (40.372914)
LONGITUDE = 104°12'11.04" (104.203067)	LONGITUDE = 104°12'08.61" (104.202392)	LONGITUDE = 104°10'02.97" (104.167492)	LONGITUDE = 104°10'02.19" (104.167275)
<b>STATE PLANE NAD 83 (CO. NORTH)</b>	<b>STATE PLANE NAD 83 (CO. NORTH)</b>	<b>STATE PLANE NAD 83 (CO. NORTH)</b>	<b>STATE PLANE NAD 83 (CO. NORTH)</b>
N: 1380703.60 E: 3361209.40	N: 1381214.56 E: 3361389.65	N: 1381473.60 E: 3371111.04	N: 1381474.48 E: 3371171.02
<b>STATE PLANE NAD 27 (CO. NORTH)</b>	<b>STATE PLANE NAD 27 (CO. NORTH)</b>	<b>STATE PLANE NAD 27 (CO. NORTH)</b>	<b>STATE PLANE NAD 27 (CO. NORTH)</b>
N: 380705.42 E: 2361359.82	N: 381216.36 E: 2361540.07	N: 381475.35 E: 2371261.73	N: 381476.23 E: 2371321.71