

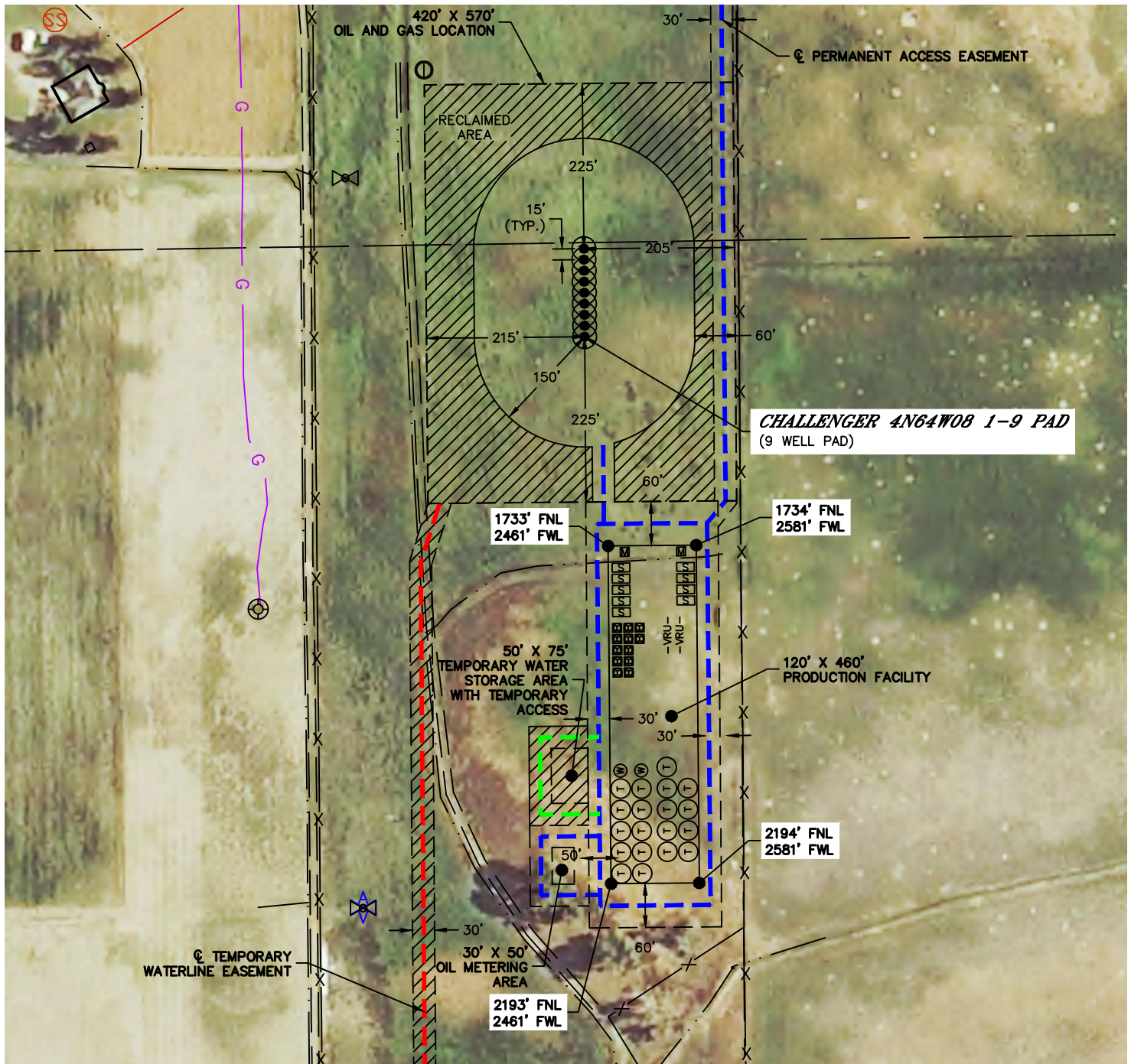


Lat40°, Inc. 6250 W. 10th Street, Unit 2, Greeley, CO 970-515-5294

PROPOSED SCALED FACILITY DRAWING

CHALLENGER 4N64W08 1-9 PAD

SECTION: 8
TOWNSHIP: 4N
RANGE: 64W
6TH. P.M.
WELD COUNTY, CO

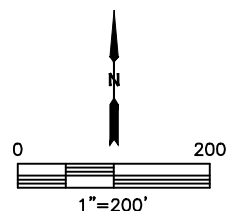


LEGEND

- PROPOSED WELL HEAD
- T TANK BATTERY
- W WATER TANK
- W WATER VAULT
- S SEPARATOR
- ECD ECD
- M METER
- VRU- VAPOR RECOVERY UNIT

TOTAL DISTURBED AREA OF LOCATION: ±10.0 ACRES
TOTAL SIZE OF LOCATION AFTER RECLAMATION: ±6.5 ACRES

Oil Metering Area= 1 LACT Unit



DATE: 4/3/2017
PROJECT#: 2016123