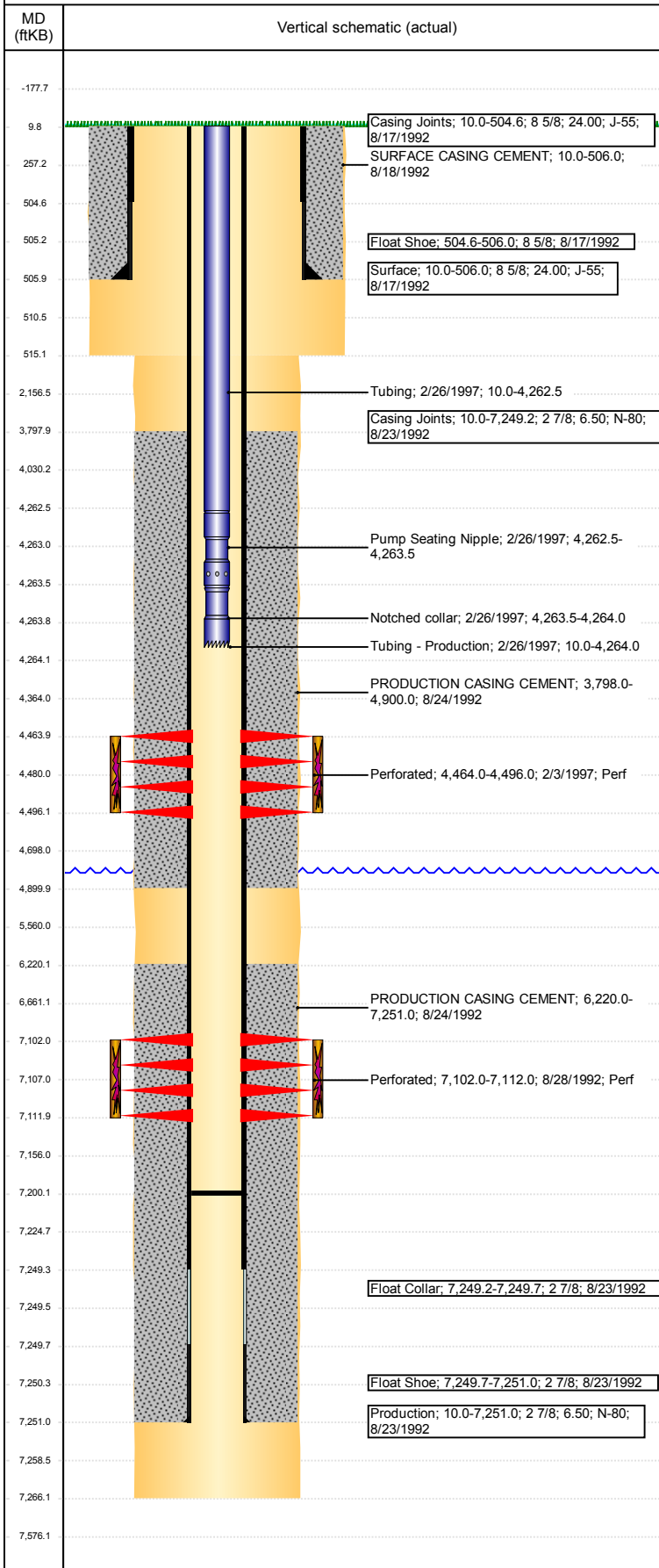


Wellbore Schematic Input Report

Well Name: SPIKE STATE H36-04

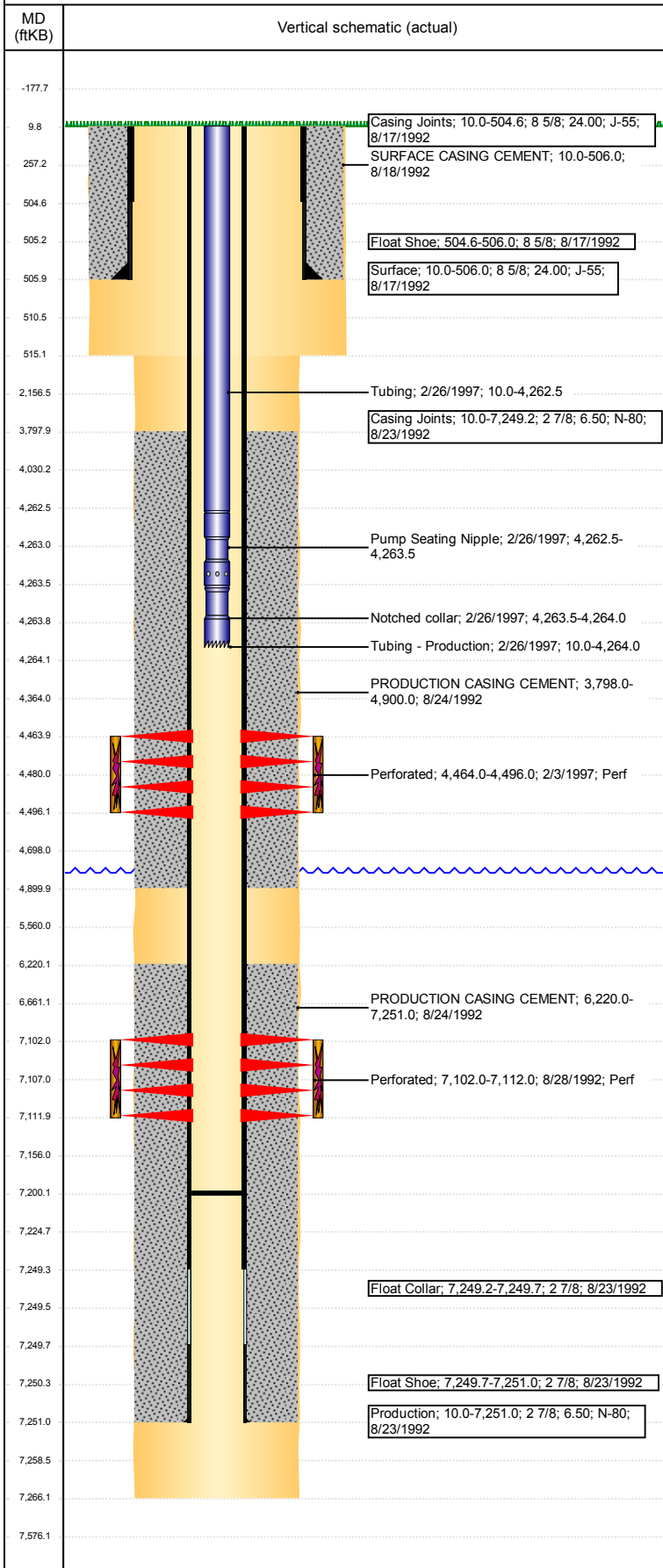
VERTICAL - ORIGINAL HOLE, 8/23/2017 3:35:08 PM



Well Header						
API 05-123-16043	Business Unit DJ BASIN		District 15		Well Config VERTICAL	
Original KB Elevation (ft) 4,822	KB - GL / MSL (ftKB) 10.00		Spud Date 8/16/1992		P & A Date	
Comment SAND PLUG OVER CODELL						
MULTIPLE PROD CSG SIZES IN WELL FILE: CSG TALLY = 2 7/8 - 7.9# & 8.7#, ST RPT, DRL RPT'S & CBL = 2 7/8 - 6.5# - USED 2 7/8 6.5#						
Directions To Well CR 49 & 30 SOUTH 1.5 MILES WEST-NORTHWEST .6 TO TANK BATTERY. CONTINUE NWW .2 NORTH .1 INTO						
Congressional Location						
Quarter 3 NW	Quarter 4 NW	Section 36	Township 3	Twship N/S Dir N	Range 65	Range E/W Dir W
Bottom Hole Location						
North-South Distance (ft)		From N or S Line		East-West Distance (ft)		From E or W Line
Plug Back Total Depths						
Date	Depth (ftKB)	Method		Com		
8/23/1992	7,247.0	CASING TALLY		SHOE W/ LATCH DOWN		
8/27/1992	7,200.0	CASED HOLE LOG		DEPTH LOGGER FROM CBL		
Wellbore Sections						
Section Des		Size (in)		Act Top, MD (ftKB)		Act Btm, MD (ftKB)
SURFACE		12 1/4		10		515
PRODUCTION		7 7/8		515		7,266
Zone Statuses						
Zone Name	Status Date	Status	Fluid Type	Job	Prod Method	
CODELL	10/20/1992	PR	Water	DRILLING/CO...	Flowing	
CODELL	1/24/1997	SI		RECOMPLETI...		
SUSSEX	3/20/1997	PR				
SUSSEX	6/1/2009	PR				
SUSSEX	11/29/2016	SI				
Casing Strings						
Surface, 506.0ftKB						
Casing Description Surface	Run Date 8/17/1992	OD (in) 8 5/8	Wt/Len (l... 24.00	Grade J-55	Top, MD (ft... 10.0	MD (ftKB) 506.0
Production, 7,251.0ftKB						
Casing Description Production	Run Date 8/23/1992	OD (in) 2 7/8	Wt/Len (l... 6.50	Grade N-80	Top, MD (ft... 10.0	MD (ftKB) 7,251.0
Cement						
Description SURFACE CASING CEMENT				Top Depth (ftKB) 10.0	Bottom Depth (ftKB) 506.0	
Description PRODUCTION CASING CEMENT				Top Depth (ftKB) 3,798.0	Bottom Depth (ftKB) 4,900.0	
Description PRODUCTION CASING CEMENT				Top Depth (ftKB) 6,220.0	Bottom Depth (ftKB) 7,251.0	
Tubing Strings						
Tubing Description Tubing - Production	Run Date 2/26/1997	String... 1 1/4	ID (in)	Wt (lb/ft)	Grade	Len (ft) 4,254.00
Set De...						
Tubing Components						
Item Des	OD (in)	Wt (lb/ft)	Grade	Jts	Len (ft)	Btm (ftKB)
Tubing	1 1/4			130	4,252.50	4,262.5
Pump Seating Nipple	1 1/4				1.00	4,263.5
Notched collar	1 1/4				0.50	4,264.0
Other In Hole						
Run Date	Des			OD (in)	Top (ftKB)	Btm (ftKB)
Logs						
Date	Type				Top, MD (ftKB)	Btm, MD (ftKB)
8/23/1992	COMPENSATED DENSITY				3,970.0	7,243.0
8/23/1992	INDUCTION				3,970.0	4,680.0
8/27/1992	CEMENT BOND				6,050.0	7,192.0
2/3/1997	CEMENT BOND				3,700.0	5,030.0
10/21/2015	GYRO				10.0	5,900.0

Well Name: SPIKE STATE H36-04

VERTICAL - ORIGINAL HOLE, 8/23/2017 3:35:09 PM



Perforation Data					
Linked Zone	Bnch/St g	Sum of Entered Shot Total	Top (ftKB)	Btm (ftKB)	Date
SUSSEX, ORIGINAL HOLE		32	4,464.00	4,496.00	2/3/1997
CODELL, ORIGINAL HOLE		40	7,102.00	7,112.00	8/28/1992
Total (Sum)		72			

Stimulation Intervals		
Start Date 8/31/1992	Primary Job Type DRILLING/COMPLETION - ORIGINAL	
Technical Result	Tech Result Details	Tech Result Note
Comment		
Start Date 2/14/1997	Primary Job Type RECOMPLETION	
Technical Result	Tech Result Details	Tech Result Note
Comment		