

Second Quarter 2017
Groundwater Monitoring and Site Remediation
Summary Report

Eaton Commons Release
Weld County, Colorado
Remediation #9251

Prepared for:



370 17th St., Suite 2500
Denver, CO 80202

Prepared by:



6899 Pecos Street, Unit C
Denver, Colorado 80221

August 1, 2017

Table of Contents

1. Introduction	1
2. Site Location and Background.....	1
3. Groundwater Monitoring.....	1
3.1 Groundwater Elevation Monitoring.....	2
3.2 Groundwater Quality Monitoring	2
4. Remediation Activities	3
4.1 Groundwater Remediation Activities	3
4.2 Supplemental Remediation Activities	3
4.2.1 Supplemental Excavation Activities	3
4.2.2 Upgradient Groundwater Monitoring Well Installation	4
5. Conclusions	5
6. Recommendations	5

Tables

1	Second Quarter 2017 Summary of Groundwater Elevation Data
2	Second Quarter 2017 Summary of BTEX Concentrations in Groundwater
3	Supplemental Excavation Soil Sample Analytical Data
4	Supplemental Excavation Groundwater Sample Analytical Data

Figures

1	Site Location Map
2	Site Overview Map with Well Locations
3	Groundwater Elevation Contour Map – May 30, 2017
4	Groundwater Analytical Results Map – May 30, 2017
5	Supplemental Excavation Analytical Results Map – April 2017

Appendices

A	Historic Analytical Results – BTEX Concentrations in Groundwater
B	Second Quarter 2017 Groundwater Laboratory Analytical Report
C	Supplemental Excavation Soil Sample Laboratory Analytical Report
D	Supplemental Excavation Groundwater Sample Analytical Report
E	Groundwater Monitoring Well Boring Logs (BH09, BH10, & BH11)

1. Introduction

This report summarizes the groundwater monitoring and remediation activities conducted during the second quarter 2017 at the Eaton Commons project (Site) in Weld County, Colorado (Figure 1). Tasman Geosciences (Tasman) performed these activities on behalf of DCP Midstream, LP (DCP). The field activities were conducted with the purpose of monitoring groundwater flow and quality conditions in the Site subsurface and performing Site remediation activities. Current Site groundwater conditions were evaluated from field data and analytical laboratory results collected during the reporting period on May 30, 2017. Additionally, supplemental remediation efforts were conducted during April 2017 at the Site as described herein.

2. Site Location and Background

The Site is located in the northeastern quarter of the southeastern quarter of Section 31, Township 7 North, Range 65 West (approximate coordinates 40.528161 degrees north and -104.696969 degrees west). It is approximately 0.28 miles north of the intersection of US Highway 74 and County Road 39 within the Eaton Commons Neighborhood. Specifically, the Site is located partially within two backyards of private residences located at 301 Hickory Street and 940 East Third St in the southeast corner of the Eaton Commons neighborhood.

On May 4, 2015, a petroleum hydrocarbon release from a buried DCP sales line was discovered. An initial Form 19 was submitted to the Colorado Oil and Gas Conservation Commission (COGCC) on May 6, 2015 and a supplemental Form 19 was submitted on June 2, 2015. Excavation activities were conducted to remove surface and subsurface soil impacts and approximately 1,140 cubic yards of impacted soil was removed and disposed of at the Waste Management Facility in Ault, CO.

Additionally, during excavation activities, groundwater was encountered at approximately 8-feet below ground surface (bgs) and approximately 375 barrels of groundwater was removed from the excavation with a vacuum truck prior to backfilling.

A Form 27 (document number 200437203) was submitted to the COGCC on August 20, 2015 and the COGCC issued remediation #9251 for the Site. Groundwater monitoring and remediation activities are being conducted in accordance with the approved work plan provided in the Form 27. Additionally, supplemental remediation activities described in the Form 27 including impacted soil excavation and upgradient monitoring well installation (BH09, BH10, & BH11) were conducted during the Second quarter 2017. Supplemental remediation activities are discussed in Section 4.

3. Groundwater Monitoring

This section describes the field and laboratory activities performed during the second quarter 2017 groundwater monitoring event. Quarterly monitoring activities were conducted on May 30, 2017, and included Site-wide groundwater gauging and sampling. Figure 2 illustrates the groundwater monitoring network utilized to perform these activities at the Site.

3.1 Groundwater Elevation Monitoring

Groundwater levels were measured to evaluate hydraulic characteristics and provide information regarding seasonal fluctuations in groundwater elevations at the Site. During the second quarter 2017, groundwater levels were measured at 11 monitoring well locations and one remediation well location (REM Well).

Groundwater levels were measured on the north side of the well casing to the nearest 0.01-foot using an oil-water interface probe (IP). Groundwater level data were later converted to elevation (feet above mean sea level [AMSL]). Measured groundwater levels and the calculated groundwater elevations are presented in Table 1.

A second quarter 2017 groundwater elevation contour map, included as Figure 3, indicates that groundwater flow at the Site generally trends to the northwest. The range of groundwater elevations and the calculated average hydraulic gradient (using elevations from BH09 and BH07R) at the Site are summarized in the table below.

Summary of Measured Hydraulic Parameters/

	First Quarter 2017 (3/15/2017)
Maximum Elevation (Well ID)	4,823.36 (BH09)
Minimum Elevation (Well ID)	4,817.82 (BH07R)
Average Change from Previous Monitoring Event – All Wells	1.98 feet
Average Hydraulic Gradient (ft/ft) / (Well IDs)	0.0355 (BH09 to BH07R)

3.2 Groundwater Quality Monitoring

Subsequent to recording groundwater level measurements at each monitoring well, groundwater samples were collected from 11 of the Site monitoring wells and one remediation well (REM Well) using disposable polyethylene bailers.

A minimum of three well casing volumes of groundwater were purged from each sample location prior to collecting groundwater samples. Groundwater samples were placed in clean laboratory supplied containers for the selected analytical methods, packed in an ice-filled cooler and maintained at approximately four degrees Celsius (⁰C) for transportation to the laboratory. Groundwater samples were then delivered under chain-of-custody procedures to Summit Scientific Laboratories (Summit) in Golden, CO for analysis.

Water quality samples were submitted for analysis of benzene, toluene, ethylbenzene, and xylene (BTEX) by United States Environmental Protection Agency (USEPA) Method 8260B.

Table 2 summarizes BTEX concentrations in groundwater samples collected during the reporting period. Analytical results up to and including the second quarter 2017 event are included in Appendix A and the

laboratory analytical report for the second quarter 2017 is included in Appendix B. Analytical results are also displayed on Figure 4.

Analytical results/observations are summarized below:

- Benzene concentrations in exceedance of the COGCC Table 910-1 standard of 5 µg/L were observed at monitoring wells BH05 and BH09 with detected concentrations of 230 µg/L and 140 µg/L, respectively. Benzene concentrations at the remaining nine (9) monitoring well locations and the remediation well (REM Well) were below laboratory detection limits and the COGCC Table 910-1 standard.
- Toluene, ethylbenzene, and total xylenes concentrations were below the applicable COGCC Table 910-1 standards and/or laboratory detection limits at all 11 sampled monitoring wells and the one remediation well location (REM Well).

4. Remediation Activities

This Section includes a description of the active and supplemental remediation activities at the Site along with observations during remediation efforts.

4.1 Groundwater Remediation Activities

Vacuum enhanced fluid recovery (EFR) groundwater remediation events were conducted at the Site through the second quarter 2017 at the EFR well locations and the horizontal remediation wells illustrated on Figure 2. Between March 27 and June 30, 2017, fourteen (14) EFR remediation events were conducted for a project total of 81 EFR events. During the second quarter 2017 EFR events, vacuum was applied continuously to the EFR, AS, and horizontal remediation wells illustrated on Figure 2 during each event for a minimum 6-hour period. A total of approximately 133 barrels (bbls) of groundwater was recovered during the second quarter 2017 through EFR remediation activities and was disposed of at the NGL Water Solutions DJ, LLC, C-3 disposal well in LaSalle, CO. A project total of approximately 813 bbls of groundwater has been removed since EFR remediation activities were initiated at the Site.

4.2 Supplemental Remediation Activities

In accordance with the approved initial Form 27 that was submitted to the COGCC on August 20, 2017 (Document #200437203), supplemental remediation activities including impacted soil excavation and upgradient groundwater monitoring well installation activities were conducted at the Site during the second quarter 2017. The supplemental remediation activities are described in the following sub-Sections.

4.2.1 Supplemental Excavation Activities

Between April 11 and 14, 2017, supplemental petroleum hydrocarbon impacted soil excavation activities upgradient of the original excavation were conducted at the Site. During excavation activities, excavated and surrounding soils were field screened with a handheld photoionization detector (PID) and traditional headspace soil sampling techniques. The data were used to guide excavation activities and

delineate impacted soil from clean backfill material of the previous excavation extents as well as clean native soil. Approximately 320 cubic yards of material was removed from the Site and transported under waste manifesting procedures to the Waste Management, North Weld County Landfill in Ault, Colorado for disposal.

During excavation activities, 12 soil samples were collected from the extents of the excavation at the locations illustrated on Figure 5 with PID readings ranging from 1.0 parts per million (ppm) to 93.7 ppm. The soil samples were submitted under chain of custody procedures to Summit for laboratory analysis of BTEX and total petroleum hydrocarbons gasoline range organics (TPH-GRO) using USEPA Method 8260B and TPH diesel range organics (DRO) using USEPA Method 8015. All 12 soil samples were returned with concentrations below applicable COGCC Table 910-1 standards and confirmed that petroleum hydrocarbon concentrations to soil were removed from the Site through excavation activities. The laboratory analytical reports for the soil samples are summarized on Table 3 and the laboratory analytical reports are provided in Appendix C.

Once the vertical and lateral extents of petroleum hydrocarbon impacted soils were reached and impacted soils were removed from the excavation, a test pit was advanced in the center of the excavation to access the groundwater table for subsequent sample collection. Groundwater was encountered at approximately 14 feet below ground surface (bgs) and groundwater was allowed to infiltrate the test pit. A grab groundwater sample (GW02) was subsequently collected and submitted to Summit for laboratory analysis of BTEX using USEPA Method 8260B. The laboratory analytical results indicated that BTEX concentrations were below the COGCC Table 910-1 standards. The laboratory analytical results are summarized on Table 4 and the laboratory analytical report is provided in Appendix D.

Between April 13 and 14, 2017, Tasman performed backfilling and compaction activities using clean structural backfill material. Backfilling was compacted in 1-foot lifts throughout the excavation for stabilization purposes and fill material was brought back to the existing grade and completed with road base for access road stabilization.

4.2.2 Upgradient Groundwater Monitoring Well Installation

On April 17, 2017, upgradient groundwater monitoring well installation activities were conducted using hollow stem augur (HAS) drilling with continuous core sampling methods. Three groundwater monitoring wells (BH09, BH10, & BH11) were installed at the locations illustrated on Figure 2 through Figure 4 to depths ranging between 18 and 19 feet bgs. The monitoring wells were completed within flush mounted well monuments set within concrete aprons. Borehole logging forms with monitoring well completion and geologic detail information are included in Appendix E.

Subsequent to well installation, the monitoring well locations and top of casing elevations were surveyed and the data were used to generate groundwater elevation data and groundwater elevation contours, discussed in Section 3. Initial groundwater sampling activities at the newly installed wells were conducted during the second quarter 2017 monitoring event as discussed in Section 3.

5. Conclusions

Evaluation of the second quarter 2017 monitoring data provides the following general observations:

- During the second quarter 2017, groundwater flow at the Site was towards the northwest which is consistent with previous quarterly monitoring data.
- Groundwater elevations across the Site increased when compared to the decrease noted between the fourth quarter 2016 and first quarter 2017. The increase in groundwater elevation is likely attributed to the agricultural activities on adjacent lands.
- Benzene concentrations in exceedance of the COGCC Table 910-1 standard of 5 µg/L were observed at monitoring wells BH05 and BH09 with detected concentrations of 230 µg/L and 140 µg/L, respectively. Benzene concentrations at the remaining nine (9) monitoring well locations and the remediation well (REM Well) were below laboratory detection limits and the COGCC Table 910-1 standard.
- Toluene, ethylbenzene, and total xylenes concentrations were below the applicable COGCC Table 910-1 standards and/or laboratory detection limits at all 11 sampled monitoring wells and the one remediation well location (REM Well).
- EFR remediation has been successful at removing impacted groundwater from the Site.
- Supplemental soil excavation efforts removed approximately 320 yd³ of impacted material from the Site.

6. Recommendations

Based on evaluation of data and Site activities from the second quarter 2017, recommendations for the Site include:

- Continue quarterly groundwater monitoring and sampling at the monitoring well locations illustrated on Figure 2.
- Perform EFR activities at the EFR, AS, and horizontal remediation wells illustrated on Figure 2 on a twice per month basis.

Tables

TABLE 1
SECOND QUARTER 2017
SUMMARY OF GROUNDWATER ELEVATION DATA
DCP MIDSTREAM - EATON COMMONS RELEASE
WELD COUNTY, COLORADO

Location	Date	Depth to Groundwater (feet)	Total Depth (feet)	TOC Elevation (feet amsl)	Groundwater Elevation (feet amsl)	Change in Groundwater Elevation Since Previous Event ⁽¹⁾ (feet)
BH01	8/25/2016	3.74	10.20	4829.11	4825.37	3.26
BH01	12/12/2016	8.30	10.20	4829.11	4820.81	-4.56
BH01	3/15/2017	8.95	10.20	4829.11	4820.16	-0.65
BH01	5/30/2017	6.05	10.63	4829.11	4823.06	2.90
BH02	8/25/2016	5.29	10.54	4829.98	4824.69	2.62
BH02	12/12/2016	9.25	10.54	4829.98	4820.73	-3.96
BH02	3/15/2017	9.88	10.54	4829.98	4820.10	-0.63
BH02	5/30/2017	7.07	10.54	4829.98	4822.91	2.81
BH03	8/25/2016	8.21	11.13	4830.93	4822.72	2.15
BH03	12/12/2016	DRY	11.13	4830.93	NA	NA
BH03	3/15/2017	DRY	11.13	4830.93	NA	NA
BH03	5/30/2017	9.64	11.12	4830.93	4821.29	NA
BH04	8/25/2016	6.91	11.23	4830.80	4823.89	3.01
BH04	12/12/2016	DRY	11.25	4830.80	NA	NA
BH04	3/15/2017	DRY	11.25	4830.80	NA	NA
BH04	5/30/2017	8.64	11.23	4830.80	4822.16	NA
BH05	8/25/2016	4.84	10.70	4829.76	4824.92	3.79
BH05	12/12/2016	9.93	10.70	4829.76	4819.83	-5.09
BH05	3/15/2017	10.37	10.70	4829.76	4819.39	-0.44
BH05	5/30/2017	7.53	10.70	4829.76	4822.23	2.84
BH06	8/25/2016	9.49	14.65	4831.81	4822.32	1.92
BH06	12/12/2016	12.51	14.65	4831.81	4819.30	-3.02
BH06	3/15/2017	12.87	14.65	4831.81	4818.94	-0.36
BH06	5/30/2017	10.75	14.65	4831.81	4821.06	2.12
BH07R	8/25/2016	12.24	22.22	4830.24	4818.00	-0.80
BH07R	12/12/2016	12.95	22.22	4830.24	4817.29	-0.71
BH07R	3/15/2017	12.99	22.22	4830.24	4817.25	-0.04
BH07R	5/30/2017	12.42	22.00	4830.24	4817.82	0.57
BH08	8/25/2016	11.93	24.20	4830.39	4818.46	0.64
BH08	12/12/2016	12.81	24.20	4830.39	4817.58	-0.88
BH08	3/15/2017	12.90	24.20	4830.39	4817.49	-0.09
BH08	5/30/2017	12.27	24.06	4830.39	4818.12	0.63
BH09 ⁽²⁾	5/30/2017	6.27	18.20	4829.63	4823.36	NA
BH10 ⁽²⁾	5/30/2017	6.16	16.39	4829.35	4823.19	NA
BH11 ⁽²⁾	5/30/2017	6.82	17.07	4829.78	4822.96	NA

TABLE 1
SECOND QUARTER 2017
SUMMARY OF GROUNDWATER ELEVATION DATA
DCP MIDSTREAM - EATON COMMONS RELEASE
WELD COUNTY, COLORADO

Location	Date	Depth to Groundwater (feet)	Total Depth (feet)	TOC Elevation (feet amsl)	Groundwater Elevation (feet amsl)	Change in Groundwater Elevation Since Previous Event ⁽¹⁾ (feet)
REM Well	8/25/2016	3.72	7.61	NM	NM	NA
REM Well	12/12/2016	DRY	7.61	NM	NM	NA
REM Well	3/15/2017	DRY	7.61	NM	NM	NA
REM Well	5/30/2017	5.94	7.60	NM	NM	NA
Average groundwater elevation change between 3/15/2017 and 05/30/2017						1.98

Notes:

1) Changes in groundwater elevation calculated by subtracting the measurement collected during the previous monitoring event from the measurement collected during the most recent monitoring event.

2) Monitoring well location installed on April 17, 2017.

amsl = feet above mean sea level

TOC = top of casing

Groundwater elevation = (TOC Elevation - Measured Depth to Water)

NA = Not Applicable

NM = Not Measured

TABLE 2
SECOND QUARTER 2017
SUMMARY OF BTEX CONCENTRATIONS IN GROUNDWATER
DCP MIDSTREAM - EATON COMMONS RELEASE
WELD COUNTY, COLORADO

Location Identification	Sample Date	Benzene (µg/l)	Toluene (µg/l)	Ethylbenzene (µg/l)	Total Xylenes (µg/l)	Comments
COGCC Standards (µg/L)⁽¹⁾		5	560	700	1,400	
BH01	5/30/2017	<1.0	<1.0	<1.0	<2.0	
BH02	5/30/2017	<1.0	<1.0	<1.0	<2.0	
BH03	5/30/2017	<1.0	<1.0	<1.0	<2.0	
BH04	5/30/2017	<1.0	<1.0	<1.0	<2.0	
BH05	5/30/2017	230	3.1	8.1	16	
BH06	5/30/2017	<1.0	<1.0	<1.0	<2.0	
BH07R	5/30/2017	<1.0	<1.0	<1.0	<2.0	
BH08	5/30/2017	<1.0	<1.0	<1.0	<2.0	
BH09 ⁽²⁾	5/30/2017	140	<1.0	<1.0	54	
BH10 ⁽²⁾	5/30/2017	<1.0	<1.0	<1.0	<2.0	
BH11 ⁽²⁾	5/30/2017	<1.0	<1.0	<1.0	<2.0	
REM Well	5/30/2017	<1.0	<1.0	<1.0	<2.0	

Notes:

1) The environmental cleanup standards for groundwater that are applicable to this site are the Colorado Oil and Gas Conservation Commission (COGCC) standards for contaminants in groundwater according to Table 910-1 of the COGCC 900 Series Rule for E&P Waste Management.

2) Monitoring well location installed on April 17, 2017.

Bold red values indicate an exceedance of the COGCC groundwater standards for the Site.

µg/L = micrograms per liter.

TABLE 3
SECOND QUARTER 2017
SUMMARY OF SOIL SAMPLE ANALYTICAL DATA
DCP MIDSTREAM - EATON COMMONS RELEASE
WELD COUNTY, COLORADO

Sample ID	Date Sampled	Depth (feet bgs)	PID Readings (ppm)	Benzene (mg/kg)	Toluene (mg/kg)	Ethylbenzene (mg/kg)	Total Xylenes (mg/kg)	TPH ⁽²⁾ (mg/kg)
COGCC Standards for Soil (mg/kg) ⁽¹⁾				0.17	85	100	175	500
SS17 @ 8'	4/11/2017	8	1.0	<0.002	<0.005	<0.005	<0.005	<50
SS18 @ 6'	4/11/2017	6	3.0	<0.002	<0.005	<0.005	<0.005	<50
SS19 @ 6'	4/11/2017	6	10.0	<0.002	<0.005	<0.005	<0.005	<50
SS20 @ 6'	4/11/2017	6	10.2	<0.002	<0.005	<0.005	<0.005	<50
SS22 @ 10'	4/11/2017	10	5.5	<0.002	<0.005	<0.005	<0.005	<50
SS23 @ 8'	4/11/2017	8	44.7	<0.002	<0.005	<0.005	0.017	<50
SS24 @ 8'	4/11/2017	8	8.5	<0.002	<0.005	<0.005	<0.005	<50
SS25 @ 11'	4/11/2017	11	2.4	<0.002	<0.005	<0.005	<0.005	<50
SS29 @ 9'	4/12/2017	9	6.2	<0.002	<0.005	<0.005	<0.005	<50
SS30 @ 11'	4/12/2017	11	9.2	<0.002	0.0055	<0.005	0.018	<50
SS31 @ 9'	4/12/2017	9	93.7	<0.002	<0.005	<0.005	<0.005	<50
SS32 @ 9'	4/12/2017	9	5.3	<0.002	<0.005	<0.005	<0.005	<50

Notes:

1). Standards for soil are taken from Colorado Oil and Gas Conservation Commission (COGCC) 2 CCR 404-1, Table 910-1, effective February 1, 2014.

2). TPH - Total volatile and extractable petroleum hydrocarbons. Value calculated by adding GRO and DRO concentrations.

GRO - Gasoline range organics.

DRO - Diesel range organics.

mg/kg= Milligrams per kilogram.

bgs - Below ground surface.

ppm - Parts per million

PID - Photoionization Detector

Bold values indicate an exceedance of the COGCC soil standards for the Site.

TABLE 4
SUPPLEMENTAL REMEDIATION
SUMMARY OF BTEX CONCENTRATIONS IN GROUNDWATER
DCP MIDSTREAM - EATON COMMONS RELEASE
WELD COUNTY, COLORADO

Location Identification	Sample Date	Benzene (µg/l)	Toluene (µg/l)	Ethylbenzene (µg/l)	Total Xylenes (µg/l)	Comments
COGCC Standards (µg/L)⁽¹⁾		5	560	700	1,400	
GW02 ⁽²⁾	4/12/2017	4.0	10	3.0	10	

Notes:

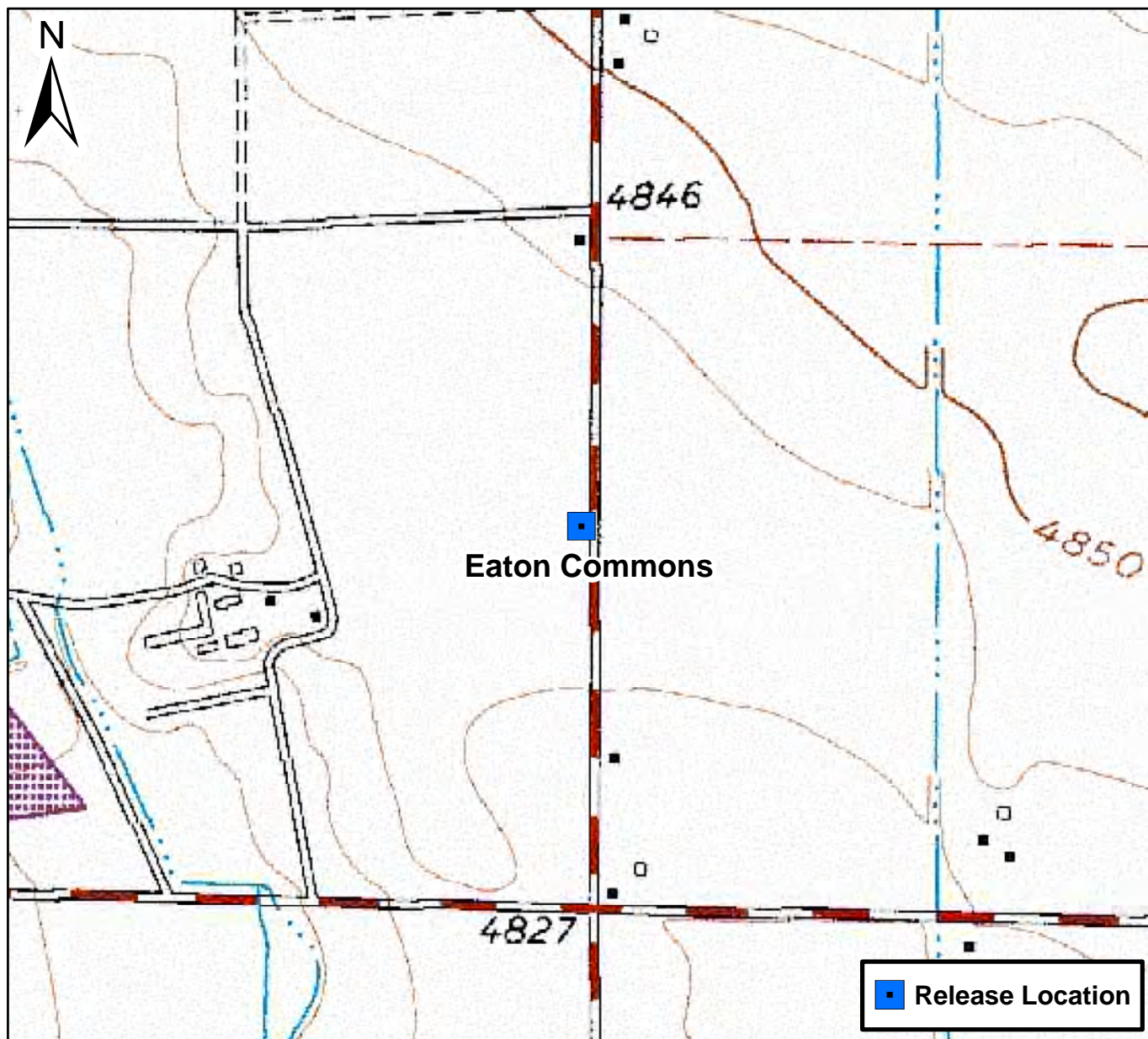
1) The environmental cleanup standards for groundwater that are applicable to this site are the Colorado Oil and Gas Conservation Commission (COGCC) standards for contaminants in groundwater according to Table 910-1 of the COGCC 900 Series Rule for E&P Waste Management.

2) GW02 collected from the excavation conducted at the Site between April 11 and 14, 2017.

Bold red values indicate an exceedance of the COGCC groundwater standards for the Site.

µg/L = micrograms per liter.

Figures



0 750 1,500 Feet

Figure 1

Site Location Map
Eaton Commons
NESE S31 T7N R65W
Weld County, Colorado





DATE:	July 2017
DESIGNED BY:	B. Humphrey
DRAWN BY:	D. Arnold



Tasman Geosciences, Inc
6899 Pecos Street - Unit C
Denver, CO 80221

**DCP Midstream
Eaton Commons**
NESE Section 31, Township 7 North, Range 65 West
Weld County, Colorado

Site Overview
Map with Well Locations

Figure
2



DATE:	July 2017
DESIGNED BY:	B. Humphrey
DRAWN BY:	D. Arnold

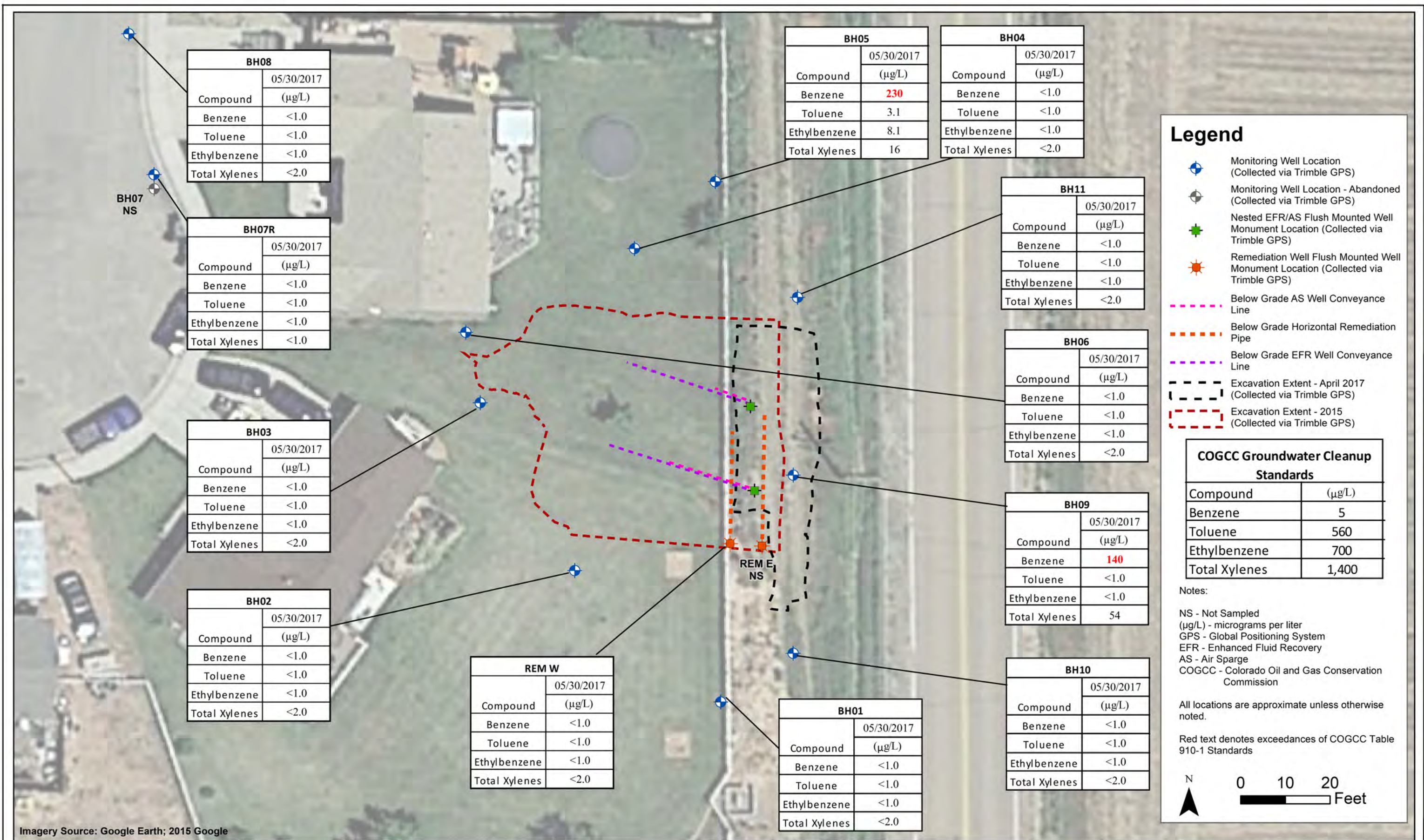


Tasman Geosciences, Inc
6899 Pecos Street - Unit C
Denver, CO 80221

**DCP Midstream
Eaton Commons**
NESE Section 31, Township 7 North, Range 65 West
Weld County, Colorado

Groundwater Elevation
Contour Map
(May 30, 2017)

**Figure
3**



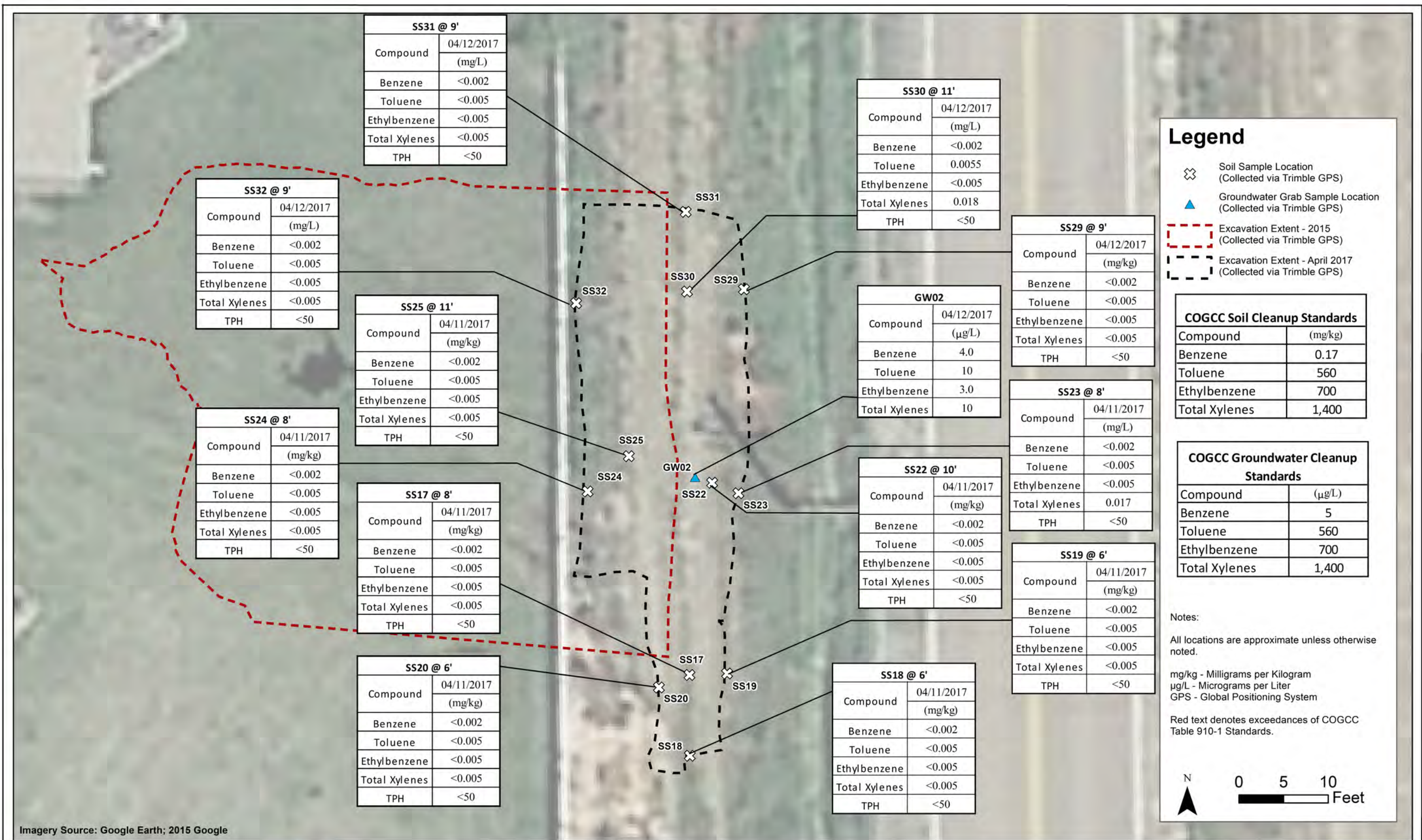
DATE: July, 2017
DESIGNED BY: B. Humphrey
DRAWN BY: D. Arnold

TASMAN GEOSCIENCES
Tasman Geosciences, Inc
6899 Pecos Street - Unit C
Denver, CO 80221

**DCP Midstream
Eaton Commons**
NESE Section 31, Township 7 North, Range 65 West
Weld County, Colorado

Groundwater Analytical
Results Map
(May 30, 2017)

Figure
4



DATE:	July 2017
DESIGNED BY:	B. Humphrey
DRAWN BY:	D. Arnold

Appendix A

Historic Analytical Results

APPENDIX A
HISTORICAL GROUNDWATER ANALYTICAL DATA
DCP MIDSTREAM - EATON COMMONS RELEASE
WELD COUNTY, COLORADO

Location Identification	Sample Date	Benzene (µg/l)	Toluene (µg/l)	Ethylbenzene (µg/l)	Total Xylenes (µg/l)	Comments
COGCC Standards (µg/L)⁽¹⁾		5	560	700	1,400	
BH01	6/11/2015	<1.0	<1.0	<1.0	<1.0	
BH01	10/7/2015	<1.0	<1.0	<1.0	<1.0	
BH01	2/19/2016	<1.0	<1.0	<1.0	<1.0	
BH01	6/6/2016	<1.0	<1.0	<1.0	<1.0	
BH01	8/25/2016	<1.0	<1.0	<1.0	<1.0	
BH01	12/12/2016	<1.0	<1.0	<1.0	<1.0	
BH01	3/15/2017	<1.0	<1.0	<1.0	<1.0	
BH01	5/30/2017	<1.0	<1.0	<1.0	<1.0	
BH02	6/11/2015	<1.0	4.3	2.7	14	
BH02	10/7/2015	<1.0	<1.0	<1.0	<1.0	
BH02	2/19/2016	<1.0	<1.0	<1.0	<1.0	
BH02	6/6/2016	<1.0	<1.0	<1.0	<1.0	
BH02	8/25/2016	<1.0	<1.0	<1.0	<1.0	
BH02	12/12/2016	<1.0	<1.0	<1.0	<1.0	
BH02	3/15/2017	<1.0	<1.0	<1.0	<1.0	
BH02	5/30/2017	<1.0	<1.0	<1.0	<1.0	
BH03	6/11/2015	2,600	1.2	14	70	
BH03	10/7/2015	4,600	1.8	81	14	
BH03	2/19/2016	220	<1.0	26	20	
BH03	6/6/2016	<1.0	<1.0	<1.0	<1.0	
BH03	8/25/2016	1,100	<1.0	<1.0	10	
BH03	12/12/2016	Not Sampled				DRY
BH03	3/15/2017	Not Sampled				DRY
BH03	5/30/2017	<1.0	<1.0	<1.0	<2.0	
BH04	6/11/2015	<1.0	<1.0	<1.0	<1.0	
BH04	10/7/2015	<1.0	<1.0	<1.0	<1.0	
BH04	2/19/2016	<1.0	<1.0	<1.0	<1.0	
BH04	6/6/2016	<1.0	<1.0	<1.0	<1.0	
BH04	8/25/2016	<1.0	<1.0	<1.0	<1.0	
BH04	12/12/2016	Not Sampled				DRY
BH04	3/15/2017	Not Sampled				DRY
BH04	5/30/2017	<1.0	<1.0	<1.0	<2.0	
BH05	6/11/2015	<1.0	<1.0	<1.0	<1.0	
BH05	10/7/2015	76	7.2	<1.0	5.2	
BH05	2/19/2016	<1.0	<1.0	<1.0	<1.0	
BH05	6/6/2016	4.3	<1.0	<1.0	<1.0	
BH05	8/25/2016	<1.0	<1.0	<1.0	<1.0	
BH05	12/12/2016	<1.0	<1.0	<1.0	<1.0	
BH05	3/15/2017	Not Sampled				Insufficient water volume
BH05	5/30/2017	230	3.1	8.1	16	
BH06	10/7/2015	<1.0	<1.0	2.4	<1.0	
BH06	2/19/2016	<1.0	<1.0	<1.0	<1.0	
BH06	6/6/2016	<1.0	<1.0	<1.0	<1.0	
BH06	8/25/2016	<1.0	<1.0	<1.0	<1.0	

APPENDIX A
HISTORICAL GROUNDWATER ANALYTICAL DATA
DCP MIDSTREAM - EATON COMMONS RELEASE
WELD COUNTY, COLORADO

Location Identification	Sample Date	Benzene (µg/l)	Toluene (µg/l)	Ethylbenzene (µg/l)	Total Xylenes (µg/l)	Comments
COGCC Standards (µg/L)⁽¹⁾		5	560	700	1,400	
BH06	12/12/2016	<1.0	<1.0	<1.0	<1.0	
BH06	3/15/2017	<1.0	<1.0	<1.0	<1.0	
BH06	5/30/2017	<1.0	<1.0	<1.0	<2.0	
BH07R	10/22/2015	<1.0	<1.0	<1.0	<1.0	
BH07R	2/26/2016	<1.0	<1.0	<1.0	<1.0	
BH07R	6/6/2016	<1.0	<1.0	<1.0	<1.0	
BH07R	8/25/2016	<1.0	<1.0	<1.0	<1.0	
BH07R	12/12/2016	<1.0	<1.0	<1.0	<1.0	
BH07R	3/15/2017	<1.0	<1.0	<1.0	<1.0	
BH07R	5/30/2017	<1.0	<1.0	<1.0	<2.0	
BH08	10/22/2015	<1.0	<1.0	<1.0	<1.0	
BH08	2/19/2016	<1.0	<1.0	<1.0	<1.0	
BH08	6/6/2016	<1.0	<1.0	<1.0	<1.0	
BH08	8/25/2016	<1.0	<1.0	<1.0	<1.0	
BH08	12/12/2016	<1.0	<1.0	<1.0	<1.0	
BH08	3/15/2017	<1.0	<1.0	<1.0	<1.0	
BH08	5/30/2017	<1.0	<1.0	<1.0	<2.0	
BH09 ⁽²⁾	5/30/2017	140	<1.0	<1.0	54	
BH10 ⁽²⁾	5/30/2017	<1.0	<1.0	<1.0	<2.0	
BH11 ⁽²⁾	5/30/2017	<1.0	<1.0	<1.0	<2.0	
REM Well	6/6/2016	<1.0	<1.0	<1.0	<1.0	
REM Well	8/25/2016	1,400	<1.0	<1.0	<1.0	
REM Well	12/12/2016	Not Sampled				DRY
REM Well	3/15/2017	Not Sampled				DRY
REM Well	5/30/2017	<1.0	<1.0	<1.0	<2.0	

Notes:

1) The environmental cleanup standards for groundwater that are applicable to this site are the Colorado Oil and Gas Conservation Commission (COGCC) standards for contaminants in groundwater according to Table 910-1 of the COGCC 900 Series Rule for E&P Waste Management.

2) Monitoring well location installed on April 17, 2017.

Bold red values indicate an exceedance of the COGCC groundwater standards for the Site.

µg/L = micrograms per liter.

Appendix B

Second Quarter 2017 Groundwater Laboratory Analytical Report

- Summit Scientific 1705283

Summit Scientific

741 Corporate Circle – Suite I ♦ Golden, Colorado 80401

303.277.9310 - laboratory ♦ 303.277.9531 - fax

June 06, 2017

Steve Weathers
DCP Operating Company
370 17th Street #2500
Denver, CO 80202
RE: Eaton Commons

Enclosed are the results of analyses for samples received by Summit Scientific on 05/30/17 17:30. If you have any questions concerning this report, please feel free to contact me.

Sincerely,

A handwritten signature in black ink, appearing to be 'Ben Shrewsbury', with a long, sweeping horizontal line extending to the right.

Ben Shrewsbury
Laboratory Manager



DCP Operating Company
370 17th Street #2500
Denver CO, 80202

Project: Eaton Commons
Project Number: [none]
Project Manager: Steve Weathers

Reported:
06/06/17 13:22

ANALYTICAL REPORT FOR SAMPLES

Sample ID	Laboratory ID	Matrix	Date Sampled	Date Received
BH01	1705283-01	Water	05/30/17 13:45	05/30/17 17:30
BH02	1705283-02	Water	05/30/17 13:36	05/30/17 17:30
BH03	1705283-03	Water	05/30/17 13:40	05/30/17 17:30
BH04	1705283-04	Water	05/30/17 13:37	05/30/17 17:30
BH05	1705283-05	Water	05/30/17 13:32	05/30/17 17:30
BH06	1705283-06	Water	05/30/17 13:19	05/30/17 17:30
BH07R	1705283-07	Water	05/30/17 13:10	05/30/17 17:30
BH08	1705283-08	Water	05/30/17 13:25	05/30/17 17:30
BH09	1705283-09	Water	05/30/17 14:50	05/30/17 17:30
BH10	1705283-10	Water	05/30/17 14:46	05/30/17 17:30
BH11	1705283-11	Water	05/30/17 14:34	05/30/17 17:30
REMOW	1705283-12	Water	05/30/17 14:45	05/30/17 17:30

Summit Scientific

The results in this report apply to the samples analyzed in accordance with the chain of custody document. This analytical report must be reproduced in its entirety.



DCP Operating Company
370 17th Street #2500
Denver CO, 80202

Project: Eaton Commons
Project Number: [none]
Project Manager: Steve Weathers

Reported:
06/06/17 13:22

Summit Scientific

17052831

741 Corporate Circle Suite 1 ♦ Golden, Colorado 80401
303-277-9310 ♦ 303-374-5933 Fax

Page 1 of 2

Client: Tasman Geosciences for DCP
Address: 6899 Pecos St, Unit C
City/State/Zip: Denver, CO 80221
Phone: _____ Fax: _____
Sampler Name: Mitch Weller, Max Garza

Project Manager: Steve Weathers
E-Mail: swweathers@dcpmidstream.com; blhumphry@tasman-geo.com
Project Name: Eaton Commons
Project Number: _____

Sample Description	Date Sampled	Time Sampled	Number of Containers	Preservative				Matrix			Analyze For:										Special Instructions				
				HCl	HNO ₃	None	Other (Specify)	Groundwater	Soil	Air - Canister Serial #	Other (Specify)	BTEX													
BH 01	5-30-17	1345	3	X				X				X													
BH 02		1336																							
BH 03		1340																							
BH 04		1337																							
BH 05		1332																							
BH 06		1319																							
BH 07R		1310																							
BH 08		1325																							
BH 09		1450																							
BH 10		1446																							

Relinquished by: <u>Mitch Weller</u>	Date/Time: <u>5-30-17</u>	Received by: <u>[Signature]</u>	Date/Time: <u>5-30-17</u>	Turn Around Time (Check)	Notes:
Relinquished by:	Date/Time:	Received by:	Date/Time:	Same Day <input type="checkbox"/>	72 Hours <input type="checkbox"/> Standard <input checked="" type="checkbox"/>
Relinquished by:	Date/Time:	Received by:	Date/Time:	24 Hours <input type="checkbox"/>	
Relinquished by:	Date/Time:	Received by:	Date/Time:	48 Hours <input type="checkbox"/>	
Relinquished by:	Date/Time:	Received in Lab by:	Date/Time:	Sample Integrity:	16-1 ice
				Temperature Upon Receipt: <u>16-1</u> Intact: Yes <input checked="" type="checkbox"/> No <input type="checkbox"/>	

www.s2scientific.com

Summit Scientific

The results in this report apply to the samples analyzed in accordance with the chain of custody document. This analytical report must be reproduced in its entirety.

Page 3 of 19

DCP Operating Company
370 17th Street #2500
Denver CO, 80202

Project: Eaton Commons
Project Number: [none]
Project Manager: Steve Weathers

Reported:
06/06/17 13:22

Sample Receipt Checklist

S2 Work Order: Tasman IDCA
Client: 1705283 Client Project ID: Eaton Commons
Shipped Via: PLU Airbill #: _____
(UPS, FedEx, Hand Delivered, Pick-up, etc.)
Matrix (check all that apply): Air Soil/Solid ✓ Water Other: _____
(Describe)

Cooler ID					
Temp (°C)	<u>16.1</u>				

Thermometer ID: 61857155-K

	Yes	No	N/A	Comments (if any)
If samples require cooling, was the temperature just above 0°C to ≤ 6°C ⁽¹⁾ ?	✓			
NOTE: If samples are delivered the same day of sampling, this requirement is waived provided that there is evidence that cooling has begun.				
Were all samples received intact ⁽¹⁾ ?	✓			
Was adequate sample volume provided ⁽¹⁾ ?	✓			
If custody seals are present, are they intact ⁽¹⁾ ?			✓	
Are short holding time analytes or samples with HTs due within 48 hours present?			✓	
Is a chain-of-custody (COC) form present and filled out completely ⁽¹⁾ ?	✓			
Does the COC agree with the number and type of sample bottles received ⁽¹⁾ ?	✓			
Do the sample IDs on the bottle labels match the COC ⁽¹⁾ ?	✓			
Is the COC properly relinquished by the client w/ date and time recorded ⁽¹⁾ ?	✓			
For volatiles in water – is there headspace present? If yes, contact client and note in narrative.		✓		
Are samples preserved that require preservation (excluding cooling) ⁽¹⁾ ?	✓			
Note the type of preservative in the Comments column – HCl, H ₂ SO ₄ , NaOH, HNO ₃ , ect				HCl
If samples are acid preserved for metals, is the pH ≤ 2 ⁽¹⁾ ?			✓	
Record the pH in Comments.				
If dissolved metals are requested, were samples field filtered?			✓	
Additional Comments (if any):				

⁽¹⁾ If NO, then contact the client before proceeding with analysis and note in case narrative.

Custodian Printed Name

Signature or Initials of Custodian

Date/Time

5/30/17 18:00p



DCP Operating Company
370 17th Street #2500
Denver CO, 80202

Project: Eaton Commons
Project Number: [none]
Project Manager: Steve Weathers

Reported:
06/06/17 13:22

BH01
1705283-01 (Water)

Summit Scientific

Volatile Organic Compounds by EPA Method 8260B

Date Sampled: **05/30/17 13:45**

Analyte	Result	Reporting Limit	Units	Dilution	Batch	Prepared	Analyzed	Method	Notes
Benzene	ND	1.0	ug/l	1	1705307	06/01/17	06/01/17	EPA 8260B	
Toluene	ND	1.0	"	"	"	"	"	"	
Ethylbenzene	ND	1.0	"	"	"	"	"	"	
Xylenes (total)	ND	2.0	"	"	"	"	"	"	

Date Sampled: **05/30/17 13:45**

Analyte	Result	Reporting Limit	Units	Dilution	Batch	Prepared	Analyzed	Method	Notes
Surrogate: 1,2-Dichloroethane-d4		120 %	37-154		"	"	"	"	
Surrogate: Toluene-d8		110 %	45-149		"	"	"	"	
Surrogate: 4-Bromofluorobenzene		94.7 %	45-146		"	"	"	"	

Summit Scientific

The results in this report apply to the samples analyzed in accordance with the chain of custody document. This analytical report must be reproduced in its entirety.



DCP Operating Company
370 17th Street #2500
Denver CO, 80202

Project: Eaton Commons
Project Number: [none]
Project Manager: Steve Weathers

Reported:
06/06/17 13:22

BH02
1705283-02 (Water)

Summit Scientific

Volatile Organic Compounds by EPA Method 8260B

Date Sampled: **05/30/17 13:36**

Analyte	Result	Reporting Limit	Units	Dilution	Batch	Prepared	Analyzed	Method	Notes
Benzene	ND	1.0	ug/l	1	1705307	06/01/17	06/01/17	EPA 8260B	
Toluene	ND	1.0	"	"	"	"	"	"	
Ethylbenzene	ND	1.0	"	"	"	"	"	"	
Xylenes (total)	ND	2.0	"	"	"	"	"	"	

Date Sampled: **05/30/17 13:36**

Analyte	Result	Reporting Limit	Units	Dilution	Batch	Prepared	Analyzed	Method	Notes
Surrogate: 1,2-Dichloroethane-d4		103 %	37-154		"	"	"	"	
Surrogate: Toluene-d8		101 %	45-149		"	"	"	"	
Surrogate: 4-Bromofluorobenzene		94.1 %	45-146		"	"	"	"	

Summit Scientific

The results in this report apply to the samples analyzed in accordance with the chain of custody document. This analytical report must be reproduced in its entirety.



DCP Operating Company
370 17th Street #2500
Denver CO, 80202

Project: Eaton Commons
Project Number: [none]
Project Manager: Steve Weathers

Reported:
06/06/17 13:22

BH03
1705283-03 (Water)

Summit Scientific

Volatile Organic Compounds by EPA Method 8260B

Date Sampled: **05/30/17 13:40**

Analyte	Result	Reporting Limit	Units	Dilution	Batch	Prepared	Analyzed	Method	Notes
Benzene	ND	1.0	ug/l	1	1705307	06/01/17	06/01/17	EPA 8260B	
Toluene	ND	1.0	"	"	"	"	"	"	
Ethylbenzene	ND	1.0	"	"	"	"	"	"	
Xylenes (total)	ND	2.0	"	"	"	"	"	"	

Date Sampled: **05/30/17 13:40**

Analyte	Result	Reporting Limit	Units	Dilution	Batch	Prepared	Analyzed	Method	Notes
Surrogate: 1,2-Dichloroethane-d4		104 %	37-154		"	"	"	"	
Surrogate: Toluene-d8		107 %	45-149		"	"	"	"	
Surrogate: 4-Bromofluorobenzene		99.3 %	45-146		"	"	"	"	

Summit Scientific

The results in this report apply to the samples analyzed in accordance with the chain of custody document. This analytical report must be reproduced in its entirety.



DCP Operating Company
370 17th Street #2500
Denver CO, 80202

Project: Eaton Commons
Project Number: [none]
Project Manager: Steve Weathers

Reported:
06/06/17 13:22

BH04
1705283-04 (Water)

Summit Scientific

Volatile Organic Compounds by EPA Method 8260B

Date Sampled: **05/30/17 13:37**

Analyte	Result	Reporting Limit	Units	Dilution	Batch	Prepared	Analyzed	Method	Notes
Benzene	ND	1.0	ug/l	1	1705307	06/01/17	06/01/17	EPA 8260B	
Toluene	ND	1.0	"	"	"	"	"	"	
Ethylbenzene	ND	1.0	"	"	"	"	"	"	
Xylenes (total)	ND	2.0	"	"	"	"	"	"	

Date Sampled: **05/30/17 13:37**

Analyte	Result	Reporting Limit	Units	Dilution	Batch	Prepared	Analyzed	Method	Notes
Surrogate: 1,2-Dichloroethane-d4		110 %	37-154		"	"	"	"	
Surrogate: Toluene-d8		102 %	45-149		"	"	"	"	
Surrogate: 4-Bromofluorobenzene		91.7 %	45-146		"	"	"	"	

Summit Scientific

The results in this report apply to the samples analyzed in accordance with the chain of custody document. This analytical report must be reproduced in its entirety.



DCP Operating Company
370 17th Street #2500
Denver CO, 80202

Project: Eaton Commons
Project Number: [none]
Project Manager: Steve Weathers

Reported:
06/06/17 13:22

BH05
1705283-05 (Water)

Summit Scientific

Volatile Organic Compounds by EPA Method 8260B

Date Sampled: **05/30/17 13:32**

Analyte	Result	Reporting Limit	Units	Dilution	Batch	Prepared	Analyzed	Method	Notes
Benzene	230	1.0	ug/l	1	1705307	06/01/17	06/01/17	EPA 8260B	
Toluene	3.1	1.0	"	"	"	"	"	"	
Ethylbenzene	8.1	1.0	"	"	"	"	"	"	
Xylenes (total)	16	2.0	"	"	"	"	"	"	

Date Sampled: **05/30/17 13:32**

Analyte	Result	Reporting Limit	Units	Dilution	Batch	Prepared	Analyzed	Method	Notes
<i>Surrogate: 1,2-Dichloroethane-d4</i>		97.5 %	37-154		"	"	"	"	
<i>Surrogate: Toluene-d8</i>		105 %	45-149		"	"	"	"	
<i>Surrogate: 4-Bromofluorobenzene</i>		97.4 %	45-146		"	"	"	"	

Summit Scientific

The results in this report apply to the samples analyzed in accordance with the chain of custody document. This analytical report must be reproduced in its entirety.



DCP Operating Company
370 17th Street #2500
Denver CO, 80202

Project: Eaton Commons
Project Number: [none]
Project Manager: Steve Weathers

Reported:
06/06/17 13:22

BH06
1705283-06 (Water)

Summit Scientific

Volatile Organic Compounds by EPA Method 8260B

Date Sampled: **05/30/17 13:19**

Analyte	Result	Reporting Limit	Units	Dilution	Batch	Prepared	Analyzed	Method	Notes
Benzene	ND	1.0	ug/l	1	1705307	06/01/17	06/01/17	EPA 8260B	
Toluene	ND	1.0	"	"	"	"	"	"	
Ethylbenzene	ND	1.0	"	"	"	"	"	"	
Xylenes (total)	ND	2.0	"	"	"	"	"	"	

Date Sampled: **05/30/17 13:19**

Analyte	Result	Reporting Limit	Units	Dilution	Batch	Prepared	Analyzed	Method	Notes
Surrogate: 1,2-Dichloroethane-d4		104 %	37-154		"	"	"	"	
Surrogate: Toluene-d8		107 %	45-149		"	"	"	"	
Surrogate: 4-Bromofluorobenzene		97.4 %	45-146		"	"	"	"	

Summit Scientific

The results in this report apply to the samples analyzed in accordance with the chain of custody document. This analytical report must be reproduced in its entirety.



DCP Operating Company
370 17th Street #2500
Denver CO, 80202

Project: Eaton Commons
Project Number: [none]
Project Manager: Steve Weathers

Reported:
06/06/17 13:22

BH07R
1705283-07 (Water)

Summit Scientific

Volatile Organic Compounds by EPA Method 8260B

Date Sampled: **05/30/17 13:10**

Analyte	Result	Reporting Limit	Units	Dilution	Batch	Prepared	Analyzed	Method	Notes
Benzene	ND	1.0	ug/l	1	1705307	06/01/17	06/01/17	EPA 8260B	
Toluene	ND	1.0	"	"	"	"	"	"	
Ethylbenzene	ND	1.0	"	"	"	"	"	"	
Xylenes (total)	ND	2.0	"	"	"	"	"	"	

Date Sampled: **05/30/17 13:10**

Analyte	Result	Reporting Limit	Units	Dilution	Batch	Prepared	Analyzed	Method	Notes
Surrogate: 1,2-Dichloroethane-d4		103 %	37-154		"	"	"	"	
Surrogate: Toluene-d8		108 %	45-149		"	"	"	"	
Surrogate: 4-Bromofluorobenzene		106 %	45-146		"	"	"	"	

Summit Scientific

The results in this report apply to the samples analyzed in accordance with the chain of custody document. This analytical report must be reproduced in its entirety.



DCP Operating Company
370 17th Street #2500
Denver CO, 80202

Project: Eaton Commons
Project Number: [none]
Project Manager: Steve Weathers

Reported:
06/06/17 13:22

BH08
1705283-08 (Water)

Summit Scientific

Volatile Organic Compounds by EPA Method 8260B

Date Sampled: **05/30/17 13:25**

Analyte	Result	Reporting Limit	Units	Dilution	Batch	Prepared	Analyzed	Method	Notes
Benzene	ND	1.0	ug/l	1	1705307	06/01/17	06/01/17	EPA 8260B	
Toluene	ND	1.0	"	"	"	"	"	"	
Ethylbenzene	ND	1.0	"	"	"	"	"	"	
Xylenes (total)	ND	2.0	"	"	"	"	"	"	

Date Sampled: **05/30/17 13:25**

Analyte	Result	Reporting Limit	Units	Dilution	Batch	Prepared	Analyzed	Method	Notes
Surrogate: 1,2-Dichloroethane-d4		104 %	37-154		"	"	"	"	
Surrogate: Toluene-d8		103 %	45-149		"	"	"	"	
Surrogate: 4-Bromofluorobenzene		95.0 %	45-146		"	"	"	"	

Summit Scientific

The results in this report apply to the samples analyzed in accordance with the chain of custody document. This analytical report must be reproduced in its entirety.



DCP Operating Company
370 17th Street #2500
Denver CO, 80202

Project: Eaton Commons
Project Number: [none]
Project Manager: Steve Weathers

Reported:
06/06/17 13:22

BH09
1705283-09 (Water)

Summit Scientific

Volatile Organic Compounds by EPA Method 8260B

Date Sampled: **05/30/17 14:50**

Analyte	Result	Reporting Limit	Units	Dilution	Batch	Prepared	Analyzed	Method	Notes
Benzene	140	1.0	ug/l	1	1705307	06/01/17	06/01/17	EPA 8260B	
Toluene	ND	1.0	"	"	"	"	"	"	
Ethylbenzene	ND	1.0	"	"	"	"	"	"	
Xylenes (total)	54	2.0	"	"	"	"	"	"	

Date Sampled: **05/30/17 14:50**

Analyte	Result	Reporting Limit	Units	Dilution	Batch	Prepared	Analyzed	Method	Notes
Surrogate: 1,2-Dichloroethane-d4		103 %	37-154		"	"	"	"	
Surrogate: Toluene-d8		109 %	45-149		"	"	"	"	
Surrogate: 4-Bromofluorobenzene		102 %	45-146		"	"	"	"	

Summit Scientific

The results in this report apply to the samples analyzed in accordance with the chain of custody document. This analytical report must be reproduced in its entirety.



DCP Operating Company
370 17th Street #2500
Denver CO, 80202

Project: Eaton Commons
Project Number: [none]
Project Manager: Steve Weathers

Reported:
06/06/17 13:22

BH10
1705283-10 (Water)

Summit Scientific

Volatile Organic Compounds by EPA Method 8260B

Date Sampled: **05/30/17 14:46**

Analyte	Result	Reporting Limit	Units	Dilution	Batch	Prepared	Analyzed	Method	Notes
Benzene	ND	1.0	ug/l	1	1705307	06/01/17	06/01/17	EPA 8260B	
Toluene	ND	1.0	"	"	"	"	"	"	
Ethylbenzene	ND	1.0	"	"	"	"	"	"	
Xylenes (total)	ND	2.0	"	"	"	"	"	"	

Date Sampled: **05/30/17 14:46**

Analyte	Result	Reporting Limit	Units	Dilution	Batch	Prepared	Analyzed	Method	Notes
Surrogate: 1,2-Dichloroethane-d4		104 %	37-154		"	"	"	"	
Surrogate: Toluene-d8		112 %	45-149		"	"	"	"	
Surrogate: 4-Bromofluorobenzene		101 %	45-146		"	"	"	"	

Summit Scientific

The results in this report apply to the samples analyzed in accordance with the chain of custody document. This analytical report must be reproduced in its entirety.



DCP Operating Company
370 17th Street #2500
Denver CO, 80202

Project: Eaton Commons
Project Number: [none]
Project Manager: Steve Weathers

Reported:
06/06/17 13:22

BH11
1705283-11 (Water)

Summit Scientific

Volatile Organic Compounds by EPA Method 8260B

Date Sampled: **05/30/17 14:34**

Analyte	Result	Reporting Limit	Units	Dilution	Batch	Prepared	Analyzed	Method	Notes
Benzene	ND	1.0	ug/l	1	1705307	06/01/17	06/01/17	EPA 8260B	
Toluene	ND	1.0	"	"	"	"	"	"	
Ethylbenzene	ND	1.0	"	"	"	"	"	"	
Xylenes (total)	ND	2.0	"	"	"	"	"	"	

Date Sampled: **05/30/17 14:34**

Analyte	Result	Reporting Limit	Units	Dilution	Batch	Prepared	Analyzed	Method	Notes
Surrogate: 1,2-Dichloroethane-d4		104 %	37-154		"	"	"	"	
Surrogate: Toluene-d8		103 %	45-149		"	"	"	"	
Surrogate: 4-Bromofluorobenzene		96.2 %	45-146		"	"	"	"	

Summit Scientific

The results in this report apply to the samples analyzed in accordance with the chain of custody document. This analytical report must be reproduced in its entirety.



DCP Operating Company
370 17th Street #2500
Denver CO, 80202

Project: Eaton Commons
Project Number: [none]
Project Manager: Steve Weathers

Reported:
06/06/17 13:22

REMW
1705283-12 (Water)

Summit Scientific

Volatile Organic Compounds by EPA Method 8260B

Date Sampled: **05/30/17 14:45**

Analyte	Result	Reporting Limit	Units	Dilution	Batch	Prepared	Analyzed	Method	Notes
Benzene	ND	1.0	ug/l	1	1705307	06/01/17	06/01/17	EPA 8260B	
Toluene	ND	1.0	"	"	"	"	"	"	
Ethylbenzene	ND	1.0	"	"	"	"	"	"	
Xylenes (total)	ND	2.0	"	"	"	"	"	"	

Date Sampled: **05/30/17 14:45**

Analyte	Result	Reporting Limit	Units	Dilution	Batch	Prepared	Analyzed	Method	Notes
Surrogate: 1,2-Dichloroethane-d4		106 %	37-154		"	"	"	"	
Surrogate: Toluene-d8		103 %	45-149		"	"	"	"	
Surrogate: 4-Bromofluorobenzene		94.7 %	45-146		"	"	"	"	

Summit Scientific

The results in this report apply to the samples analyzed in accordance with the chain of custody document. This analytical report must be reproduced in its entirety.



DCP Operating Company
370 17th Street #2500
Denver CO, 80202

Project: Eaton Commons
Project Number: [none]
Project Manager: Steve Weathers

Reported:
06/06/17 13:22

Volatile Organic Compounds by EPA Method 8260B - Quality Control

Summit Scientific

Analyte	Reporting			Spike	Source		%REC		RPD	
	Result	Limit	Units	Level	Result	%REC	Limits	RPD	Limit	Notes

Batch 1705307 - EPA 5030 Water MS

Blank (1705307-BLK1)

Prepared & Analyzed: 06/01/17

Benzene	ND	1.0	ug/l							
Toluene	ND	1.0	"							
Ethylbenzene	ND	1.0	"							
Xylenes (total)	ND	2.0	"							
Surrogate: 1,2-Dichloroethane-d4	14.5		"	13.3	109	37-154				
Surrogate: Toluene-d8	13.4		"	13.3	100	45-149				
Surrogate: 4-Bromofluorobenzene	13.3		"	13.3	99.5	45-146				

LCS (1705307-BS1)

Prepared & Analyzed: 06/01/17

Benzene	31.0	1.0	ug/l	33.3	92.9	51-132				
Toluene	34.0	1.0	"	33.3	102	51-138				
Ethylbenzene	38.6	1.0	"	33.1	117	58-146				
m,p-Xylene	74.2	2.0	"	66.5	112	57-144				
o-Xylene	34.9	1.0	"	32.7	107	53-146				
Surrogate: 1,2-Dichloroethane-d4	14.0		"	13.3	105	37-154				
Surrogate: Toluene-d8	13.2		"	13.3	99.4	45-149				
Surrogate: 4-Bromofluorobenzene	13.6		"	13.3	102	45-146				

Matrix Spike (1705307-MS1)

Source: 1705283-01

Prepared & Analyzed: 06/01/17

Benzene	32.0	1.0	ug/l	33.3	ND	96.1	34-141			
Toluene	35.1	1.0	"	33.3	ND	105	27-151			
Ethylbenzene	39.6	1.0	"	33.1	ND	120	29-160			
m,p-Xylene	77.5	2.0	"	66.5	ND	117	20-166			
o-Xylene	36.5	1.0	"	32.7	ND	112	33-159			
Surrogate: 1,2-Dichloroethane-d4	14.4		"	13.3	108	37-154				
Surrogate: Toluene-d8	13.4		"	13.3	100	45-149				
Surrogate: 4-Bromofluorobenzene	13.2		"	13.3	99.3	45-146				

Summit Scientific

The results in this report apply to the samples analyzed in accordance with the chain of custody document. This analytical report must be reproduced in its entirety.



DCP Operating Company
370 17th Street #2500
Denver CO, 80202

Project: Eaton Commons
Project Number: [none]
Project Manager: Steve Weathers

Reported:
06/06/17 13:22

Volatile Organic Compounds by EPA Method 8260B - Quality Control
Summit Scientific

Analyte	Reporting			Spike	Source		%REC		RPD	
	Result	Limit	Units	Level	Result	%REC	Limits	RPD	Limit	Notes

Batch 1705307 - EPA 5030 Water MS

Matrix Spike Dup (1705307-MSD1)	Source: 1705283-01			Prepared & Analyzed: 06/01/17						
Benzene	31.1	1.0	ug/l	33.3	ND	93.4	34-141	2.85	32	
Toluene	30.5	1.0	"	33.3	ND	91.5	27-151	14.1	25	
Ethylbenzene	36.9	1.0	"	33.1	ND	112	29-160	7.06	50	
m,p-Xylene	71.2	2.0	"	66.5	ND	107	20-166	8.46	36	
o-Xylene	34.0	1.0	"	32.7	ND	104	33-159	7.12	26	
Surrogate: 1,2-Dichloroethane-d4	15.4		"	13.3		115	37-154			
Surrogate: Toluene-d8	12.2		"	13.3		91.4	45-149			
Surrogate: 4-Bromofluorobenzene	13.0		"	13.3		97.8	45-146			

Summit Scientific

The results in this report apply to the samples analyzed in accordance with the chain of custody document. This analytical report must be reproduced in its entirety.



DCP Operating Company
370 17th Street #2500
Denver CO, 80202

Project: Eaton Commons

Project Number: [none]
Project Manager: Steve Weathers

Reported:
06/06/17 13:22

Notes and Definitions

DET	Analyte DETECTED
ND	Analyte NOT DETECTED at or above the reporting limit
NR	Not Reported
dry	Sample results reported on a dry weight basis
RPD	Relative Percent Difference

Appendix C

Supplemental Excavation Soil Sample Laboratory Analytical Report

- Summit Scientific 1704114
- Summit Scientific 1704130

Summit Scientific

741 Corporate Circle – Suite I ♦ Golden, Colorado 80401

303.277.9310 - laboratory ♦ 303.277.9531 - fax

April 12, 2017

Brian Humphrey
DCP Operating Company
370 17th Street #2500
Denver, CO 80202
RE: Eaton Commons

Enclosed are the results of analyses for samples received by Summit Scientific on 04/11/17 18:11. If you have any questions concerning this report, please feel free to contact me.

Sincerely,

A handwritten signature in black ink, appearing to be 'Ben Shrewsbury', with a long, sweeping horizontal line extending to the right.

Ben Shrewsbury
Laboratory Manager



DCP Operating Company
370 17th Street #2500
Denver CO, 80202

Project: Eaton Commons
Project Number: [none]
Project Manager: Brian Humphrey

Reported:
04/12/17 00:25

ANALYTICAL REPORT FOR SAMPLES

Sample ID	Laboratory ID	Matrix	Date Sampled	Date Received
SS17@8'	1704114-01	Soil	04/11/17 09:10	04/11/17 18:11
SS18@6'	1704114-02	Soil	04/11/17 09:15	04/11/17 18:11
SS19@6'	1704114-03	Soil	04/11/17 10:25	04/11/17 18:11
SS20@6'	1704114-04	Soil	04/11/17 10:26	04/11/17 18:11
SS22@10'	1704114-05	Soil	04/11/17 11:15	04/11/17 18:11
SS23@8'	1704114-06	Soil	04/11/17 12:36	04/11/17 18:11
SS24@8'	1704114-07	Soil	04/11/17 14:37	04/11/17 18:11
SS25@11'	1704114-08	Soil	04/11/17 14:39	04/11/17 18:11

Summit Scientific

The results in this report apply to the samples analyzed in accordance with the chain of custody document. This analytical report must be reproduced in its entirety.



DCP Operating Company
370 17th Street #2500
Denver CO, 80202

Project: Eaton Commons
Project Number: [none]
Project Manager: Brian Humphrey

Reported:
04/12/17 00:25

Summit Scientific

741 Corporate Circle Suite 1 • Golden, Colorado 80401
303-277-9310 • 303-374-5933 Fax

1704114

Page 1 of 1

Client: DCP / Tasman

Address:

City/State/Zip:

Phone: 303-457-1228

Fax:

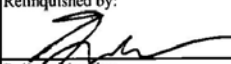
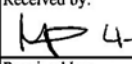
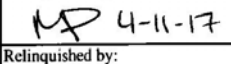
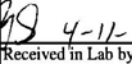
Sampler Name: GB

Project Manager: Brian Humphrey

E-Mail: B.Humphrey@tasman-geo.com & swwatters@dep.mt.gov

Project Name: Eaton Commons

Project Number:

Sample Description	Date Sampled	Time Sampled	Number of Containers	Preservative			Matrix			Analyze For:						Special Instructions	
				HCl	HNO ₃	None	Other (Specify)	Groundwater	Soil	Air - Canister Serial #	Other (Specify)	8260 BTEX	8260B GBTEXN	8015 DRO	pH, EC, SAR		
SS17@8-	4/11/17	09:10	1			X											
SS18@6-		09:15	1			X											
SS19@6-		10:25	1			X											
SS20@6-		10:26	1			X											
SS22@10-		11:15	1			X											
SS23@8-		12:36	1			X											
SS24@8-		14:37	1			X											
SS25@11-	4	14:39	1			X											
Relinquished by: 				Date/Time: 4/11/17 17:50		Received by: 				Date/Time: 4-11-17 17:50		Turn Around Time (Check)				Notes:	
												Same Day <input checked="" type="checkbox"/> 72 Hours <input type="checkbox"/>					
												24 Hours <input type="checkbox"/> Standard <input type="checkbox"/>					
												48 Hours <input type="checkbox"/>					
Relinquished by: 				Date/Time: 4-11-17 18:15		Received by: 				Date/Time: 4-11-17 18:15		Sample Integrity:					
												Temperature Upon Receipt: 3.4					
												Intact: Yes <input checked="" type="checkbox"/> No <input type="checkbox"/>					

www.s2scientific.com

Summit Scientific

The results in this report apply to the samples analyzed in accordance with the chain of custody document. This analytical report must be reproduced in its entirety.



DCP Operating Company
370 17th Street #2500
Denver CO, 80202

Project: Eaton Commons
Project Number: [none]
Project Manager: Brian Humphrey

Reported:
04/12/17 00:25

1704114

Sample Receipt Checklist

S2 Work Order: _____

Client: DCP/TasmanClient Project ID: Eaton CommonsShipped Via: P.U.

(UPS, FedEx, Hand Delivered, Pick-up, etc.)

Airbill #: _____

Matrix (check all that apply): Air ☒ Soil/Solid Water Other: _____
(Describe)

Cooler ID					
Temp (°C)	3.4				

Thermometer ID: 61857155-K

	Yes	No	N/A	Comments (if any)
If samples require cooling, was the temperature just above 0°C to ≤ 6°C ⁽¹⁾ ?	<input checked="" type="checkbox"/>			
NOTE: If samples are delivered the same day of sampling, this requirement is waived provided that there is evidence that cooling has begun.				
Were all samples received intact ⁽¹⁾ ?	<input checked="" type="checkbox"/>			
Was adequate sample volume provided ⁽¹⁾ ?	<input checked="" type="checkbox"/>			
If custody seals are present, are they intact ⁽¹⁾ ?			<input checked="" type="checkbox"/>	
Are short holding time analytes or samples with HTs due within 48 hours present?	<input checked="" type="checkbox"/>			
Is a chain-of-custody (COC) form present and filled out completely ⁽¹⁾ ?	<input checked="" type="checkbox"/>			
Does the COC agree with the number and type of sample bottles received ⁽¹⁾ ?	<input checked="" type="checkbox"/>			
Do the sample IDs on the bottle labels match the COC ⁽¹⁾ ?	<input checked="" type="checkbox"/>			
Is the COC properly relinquished by the client w/ date and time recorded ⁽¹⁾ ?	<input checked="" type="checkbox"/>			
For volatiles in water – is there headspace present? If yes, contact client and note in narrative.			<input checked="" type="checkbox"/>	
Are samples preserved that require preservation (excluding cooling) ⁽¹⁾ ?			<input checked="" type="checkbox"/>	
Note the type of preservative in the Comments column – HCl, H ₂ SO ₄ , NaOH, HNO ₃ , ect				
If samples are acid preserved for metals, is the pH ≤ 2 ⁽¹⁾ ?			<input checked="" type="checkbox"/>	
Record the pH in Comments.				
If dissolved metals are requested, were samples field filtered?			<input checked="" type="checkbox"/>	
Additional Comments (if any):				
⁽¹⁾ If NO, then contact the client before proceeding with analysis and note in case narrative.				

Mur.P.
Custodian Printed Name

MA 4-11-17
Signature or Initials of Custodian

18:25
Date/Time



DCP Operating Company
370 17th Street #2500
Denver CO, 80202

Project: Eaton Commons
Project Number: [none]
Project Manager: Brian Humphrey

Reported:
04/12/17 00:25

SS17@8'
1704114-01 (Soil)

Summit Scientific

Extractable Petroleum Hydrocarbons by 8015

Date Sampled: 04/11/17 09:10

Analyte	Result	Reporting Limit	Units	Dilution	Batch	Prepared	Analyzed	Method	Notes
C10-C28 (DRO)	ND	50	mg/kg	1	1704119	04/11/17	04/11/17	8015M	

Date Sampled: 04/11/17 09:10

Analyte	Result	Reporting Limit	Units	Dilution	Batch	Prepared	Analyzed	Method	Notes
Surrogate: o-Terphenyl		111 %	30-150		"	"	"	"	

Volatile Organic Compounds by EPA Method 8260B

Date Sampled: 04/11/17 09:10

Analyte	Result	Reporting Limit	Units	Dilution	Batch	Prepared	Analyzed	Method	Notes
Benzene	ND	0.0020	mg/kg	1	1704092	04/11/17	04/11/17	EPA 8260B	
Toluene	ND	0.0050	"	"	"	"	"	"	
Ethylbenzene	ND	0.0050	"	"	"	"	"	"	
Xylenes (total)	ND	0.0050	"	"	"	"	"	"	
Gasoline Range Hydrocarbons	ND	0.50	"	"	"	"	"	"	

Date Sampled: 04/11/17 09:10

Analyte	Result	Reporting Limit	Units	Dilution	Batch	Prepared	Analyzed	Method	Notes
Surrogate: 1,2-Dichloroethane-d4		101 %	23-173		"	"	"	"	
Surrogate: Toluene-d8		97.4 %	20-170		"	"	"	"	
Surrogate: 4-Bromofluorobenzene		103 %	21-167		"	"	"	"	

Summit Scientific

The results in this report apply to the samples analyzed in accordance with the chain of custody document. This analytical report must be reproduced in its entirety.



DCP Operating Company
370 17th Street #2500
Denver CO, 80202

Project: Eaton Commons
Project Number: [none]
Project Manager: Brian Humphrey

Reported:
04/12/17 00:25

SS18@6'
1704114-02 (Soil)

Summit Scientific

Extractable Petroleum Hydrocarbons by 8015

Date Sampled: 04/11/17 09:15

Analyte	Result	Reporting Limit	Units	Dilution	Batch	Prepared	Analyzed	Method	Notes
C10-C28 (DRO)	ND	50	mg/kg	1	1704119	04/11/17	04/11/17	8015M	

Date Sampled: 04/11/17 09:15

Analyte	Result	Reporting Limit	Units	Dilution	Batch	Prepared	Analyzed	Method	Notes
Surrogate: o-Terphenyl		113 %	30-150		"	"	"	"	

Volatile Organic Compounds by EPA Method 8260B

Date Sampled: 04/11/17 09:15

Analyte	Result	Reporting Limit	Units	Dilution	Batch	Prepared	Analyzed	Method	Notes
Benzene	ND	0.0020	mg/kg	1	1704092	04/11/17	04/11/17	EPA 8260B	
Toluene	ND	0.0050	"	"	"	"	"	"	
Ethylbenzene	ND	0.0050	"	"	"	"	"	"	
Xylenes (total)	ND	0.0050	"	"	"	"	"	"	
Gasoline Range Hydrocarbons	ND	0.50	"	"	"	"	"	"	

Date Sampled: 04/11/17 09:15

Analyte	Result	Reporting Limit	Units	Dilution	Batch	Prepared	Analyzed	Method	Notes
Surrogate: 1,2-Dichloroethane-d4		101 %	23-173		"	"	"	"	
Surrogate: Toluene-d8		98.0 %	20-170		"	"	"	"	
Surrogate: 4-Bromofluorobenzene		103 %	21-167		"	"	"	"	

Summit Scientific

The results in this report apply to the samples analyzed in accordance with the chain of custody document. This analytical report must be reproduced in its entirety.



DCP Operating Company
370 17th Street #2500
Denver CO, 80202

Project: Eaton Commons
Project Number: [none]
Project Manager: Brian Humphrey

Reported:
04/12/17 00:25

SS19@6'
1704114-03 (Soil)

Summit Scientific

Extractable Petroleum Hydrocarbons by 8015

Date Sampled: 04/11/17 10:25

Analyte	Result	Reporting Limit	Units	Dilution	Batch	Prepared	Analyzed	Method	Notes
C10-C28 (DRO)	ND	50	mg/kg	1	1704119	04/11/17	04/11/17	8015M	

Date Sampled: 04/11/17 10:25

Analyte	Result	Reporting Limit	Units	Dilution	Batch	Prepared	Analyzed	Method	Notes
Surrogate: o-Terphenyl		107 %	30-150		"	"	"	"	

Volatile Organic Compounds by EPA Method 8260B

Date Sampled: 04/11/17 10:25

Analyte	Result	Reporting Limit	Units	Dilution	Batch	Prepared	Analyzed	Method	Notes
Benzene	ND	0.0020	mg/kg	1	1704092	04/11/17	04/11/17	EPA 8260B	
Toluene	ND	0.0050	"	"	"	"	"	"	
Ethylbenzene	ND	0.0050	"	"	"	"	"	"	
Xylenes (total)	ND	0.0050	"	"	"	"	"	"	
Gasoline Range Hydrocarbons	ND	0.50	"	"	"	"	"	"	

Date Sampled: 04/11/17 10:25

Analyte	Result	Reporting Limit	Units	Dilution	Batch	Prepared	Analyzed	Method	Notes
Surrogate: 1,2-Dichloroethane-d4		103 %	23-173		"	"	"	"	
Surrogate: Toluene-d8		98.8 %	20-170		"	"	"	"	
Surrogate: 4-Bromofluorobenzene		100 %	21-167		"	"	"	"	

Summit Scientific

The results in this report apply to the samples analyzed in accordance with the chain of custody document. This analytical report must be reproduced in its entirety.



DCP Operating Company
370 17th Street #2500
Denver CO, 80202

Project: Eaton Commons
Project Number: [none]
Project Manager: Brian Humphrey

Reported:
04/12/17 00:25

SS20@6'
1704114-04 (Soil)

Summit Scientific

Extractable Petroleum Hydrocarbons by 8015

Date Sampled: 04/11/17 10:26

Analyte	Result	Reporting Limit	Units	Dilution	Batch	Prepared	Analyzed	Method	Notes
C10-C28 (DRO)	ND	50	mg/kg	1	1704119	04/11/17	04/11/17	8015M	

Date Sampled: 04/11/17 10:26

Analyte	Result	Reporting Limit	Units	Dilution	Batch	Prepared	Analyzed	Method	Notes
Surrogate: o-Terphenyl		104 %	30-150		"	"	"	"	

Volatile Organic Compounds by EPA Method 8260B

Date Sampled: 04/11/17 10:26

Analyte	Result	Reporting Limit	Units	Dilution	Batch	Prepared	Analyzed	Method	Notes
Benzene	ND	0.0020	mg/kg	1	1704092	04/11/17	04/11/17	EPA 8260B	
Toluene	ND	0.0050	"	"	"	"	"	"	
Ethylbenzene	ND	0.0050	"	"	"	"	"	"	
Xylenes (total)	ND	0.0050	"	"	"	"	"	"	
Gasoline Range Hydrocarbons	ND	0.50	"	"	"	"	"	"	

Date Sampled: 04/11/17 10:26

Analyte	Result	Reporting Limit	Units	Dilution	Batch	Prepared	Analyzed	Method	Notes
Surrogate: 1,2-Dichloroethane-d4		103 %	23-173		"	"	"	"	
Surrogate: Toluene-d8		99.5 %	20-170		"	"	"	"	
Surrogate: 4-Bromofluorobenzene		101 %	21-167		"	"	"	"	

Summit Scientific

The results in this report apply to the samples analyzed in accordance with the chain of custody document. This analytical report must be reproduced in its entirety.



DCP Operating Company
370 17th Street #2500
Denver CO, 80202

Project: Eaton Commons
Project Number: [none]
Project Manager: Brian Humphrey

Reported:
04/12/17 00:25

SS22@10'
1704114-05 (Soil)

Summit Scientific

Extractable Petroleum Hydrocarbons by 8015

Date Sampled: **04/11/17 11:15**

Analyte	Result	Reporting Limit	Units	Dilution	Batch	Prepared	Analyzed	Method	Notes
C10-C28 (DRO)	ND	50	mg/kg	1	1704119	04/11/17	04/11/17	8015M	

Date Sampled: **04/11/17 11:15**

Analyte	Result	Reporting Limit	Units	Dilution	Batch	Prepared	Analyzed	Method	Notes
Surrogate: o-Terphenyl		108 %	30-150		"	"	"	"	

Volatile Organic Compounds by EPA Method 8260B

Date Sampled: **04/11/17 11:15**

Analyte	Result	Reporting Limit	Units	Dilution	Batch	Prepared	Analyzed	Method	Notes
Benzene	ND	0.0020	mg/kg	1	1704092	04/11/17	04/11/17	EPA 8260B	
Toluene	ND	0.0050	"	"	"	"	"	"	
Ethylbenzene	ND	0.0050	"	"	"	"	"	"	
Xylenes (total)	ND	0.0050	"	"	"	"	"	"	
Gasoline Range Hydrocarbons	ND	0.50	"	"	"	"	"	"	

Date Sampled: **04/11/17 11:15**

Analyte	Result	Reporting Limit	Units	Dilution	Batch	Prepared	Analyzed	Method	Notes
Surrogate: 1,2-Dichloroethane-d4		101 %	23-173		"	"	"	"	
Surrogate: Toluene-d8		102 %	20-170		"	"	"	"	
Surrogate: 4-Bromofluorobenzene		94.0 %	21-167		"	"	"	"	

Summit Scientific

The results in this report apply to the samples analyzed in accordance with the chain of custody document. This analytical report must be reproduced in its entirety.



DCP Operating Company
370 17th Street #2500
Denver CO, 80202

Project: Eaton Commons
Project Number: [none]
Project Manager: Brian Humphrey

Reported:
04/12/17 00:25

SS23@8'
1704114-06 (Soil)

Summit Scientific

Extractable Petroleum Hydrocarbons by 8015

Date Sampled: **04/11/17 12:36**

Analyte	Result	Reporting Limit	Units	Dilution	Batch	Prepared	Analyzed	Method	Notes
C10-C28 (DRO)	ND	50	mg/kg	1	1704119	04/11/17	04/11/17	8015M	

Date Sampled: **04/11/17 12:36**

Analyte	Result	Reporting Limit	Units	Dilution	Batch	Prepared	Analyzed	Method	Notes
Surrogate: o-Terphenyl		105 %	30-150		"	"	"	"	

Volatile Organic Compounds by EPA Method 8260B

Date Sampled: **04/11/17 12:36**

Analyte	Result	Reporting Limit	Units	Dilution	Batch	Prepared	Analyzed	Method	Notes
Benzene	ND	0.0020	mg/kg	1	1704092	04/11/17	04/11/17	EPA 8260B	
Toluene	ND	0.0050	"	"	"	"	"	"	
Ethylbenzene	ND	0.0050	"	"	"	"	"	"	
Xylenes (total)	0.017	0.0050	"	"	"	"	"	"	
Gasoline Range Hydrocarbons	0.92	0.50	"	"	"	"	"	"	

Date Sampled: **04/11/17 12:36**

Analyte	Result	Reporting Limit	Units	Dilution	Batch	Prepared	Analyzed	Method	Notes
Surrogate: 1,2-Dichloroethane-d4		96.3 %	23-173		"	"	"	"	
Surrogate: Toluene-d8		94.4 %	20-170		"	"	"	"	
Surrogate: 4-Bromofluorobenzene		97.3 %	21-167		"	"	"	"	

Summit Scientific

The results in this report apply to the samples analyzed in accordance with the chain of custody document. This analytical report must be reproduced in its entirety.



DCP Operating Company
370 17th Street #2500
Denver CO, 80202

Project: Eaton Commons
Project Number: [none]
Project Manager: Brian Humphrey

Reported:
04/12/17 00:25

SS24@8'
1704114-07 (Soil)

Summit Scientific

Extractable Petroleum Hydrocarbons by 8015

Date Sampled: 04/11/17 14:37

Analyte	Result	Reporting Limit	Units	Dilution	Batch	Prepared	Analyzed	Method	Notes
C10-C28 (DRO)	ND	50	mg/kg	1	1704119	04/11/17	04/11/17	8015M	

Date Sampled: 04/11/17 14:37

Analyte	Result	Reporting Limit	Units	Dilution	Batch	Prepared	Analyzed	Method	Notes
Surrogate: o-Terphenyl		108 %	30-150		"	"	"	"	

Volatile Organic Compounds by EPA Method 8260B

Date Sampled: 04/11/17 14:37

Analyte	Result	Reporting Limit	Units	Dilution	Batch	Prepared	Analyzed	Method	Notes
Benzene	ND	0.0020	mg/kg	1	1704092	04/11/17	04/11/17	EPA 8260B	
Toluene	ND	0.0050	"	"	"	"	"	"	
Ethylbenzene	ND	0.0050	"	"	"	"	"	"	
Xylenes (total)	ND	0.0050	"	"	"	"	"	"	
Gasoline Range Hydrocarbons	ND	0.50	"	"	"	"	"	"	

Date Sampled: 04/11/17 14:37

Analyte	Result	Reporting Limit	Units	Dilution	Batch	Prepared	Analyzed	Method	Notes
Surrogate: 1,2-Dichloroethane-d4		105 %	23-173		"	"	"	"	
Surrogate: Toluene-d8		101 %	20-170		"	"	"	"	
Surrogate: 4-Bromofluorobenzene		91.5 %	21-167		"	"	"	"	

Summit Scientific

The results in this report apply to the samples analyzed in accordance with the chain of custody document. This analytical report must be reproduced in its entirety.



DCP Operating Company
370 17th Street #2500
Denver CO, 80202

Project: Eaton Commons
Project Number: [none]
Project Manager: Brian Humphrey

Reported:
04/12/17 00:25

SS25@11'
1704114-08 (Soil)

Summit Scientific

Extractable Petroleum Hydrocarbons by 8015

Date Sampled: 04/11/17 14:39

Analyte	Result	Reporting Limit	Units	Dilution	Batch	Prepared	Analyzed	Method	Notes
C10-C28 (DRO)	ND	50	mg/kg	1	1704119	04/11/17	04/11/17	8015M	

Date Sampled: 04/11/17 14:39

Analyte	Result	Reporting Limit	Units	Dilution	Batch	Prepared	Analyzed	Method	Notes
Surrogate: o-Terphenyl		108 %	30-150		"	"	"	"	

Volatile Organic Compounds by EPA Method 8260B

Date Sampled: 04/11/17 14:39

Analyte	Result	Reporting Limit	Units	Dilution	Batch	Prepared	Analyzed	Method	Notes
Benzene	ND	0.0020	mg/kg	1	1704092	04/11/17	04/11/17	EPA 8260B	
Toluene	ND	0.0050	"	"	"	"	"	"	
Ethylbenzene	ND	0.0050	"	"	"	"	"	"	
Xylenes (total)	ND	0.0050	"	"	"	"	"	"	
Gasoline Range Hydrocarbons	ND	0.50	"	"	"	"	"	"	

Date Sampled: 04/11/17 14:39

Analyte	Result	Reporting Limit	Units	Dilution	Batch	Prepared	Analyzed	Method	Notes
Surrogate: 1,2-Dichloroethane-d4		102 %	23-173		"	"	"	"	
Surrogate: Toluene-d8		101 %	20-170		"	"	"	"	
Surrogate: 4-Bromofluorobenzene		92.6 %	21-167		"	"	"	"	

Summit Scientific

The results in this report apply to the samples analyzed in accordance with the chain of custody document. This analytical report must be reproduced in its entirety.



DCP Operating Company
370 17th Street #2500
Denver CO, 80202

Project: Eaton Commons
Project Number: [none]
Project Manager: Brian Humphrey

Reported:
04/12/17 00:25

Extractable Petroleum Hydrocarbons by 8015 - Quality Control
Summit Scientific

Analyte	Reporting			Spike	Source		%REC		RPD	
	Result	Limit	Units	Level	Result	%REC	Limits	RPD	Limit	Notes

Batch 1704119 - EPA 3550A

Blank (1704119-BLK1)

Prepared & Analyzed: 04/11/17

C10-C28 (DRO)	ND	50	mg/kg							
Surrogate: o-Terphenyl	14.4		"	12.5		115	30-150			

LCS (1704119-BS1)

Prepared & Analyzed: 04/11/17

C10-C28 (DRO)	477	50	mg/kg	499		95.5	73-134			
Surrogate: o-Terphenyl	13.8		"	12.5		110	30-150			

Matrix Spike (1704119-MS1)

Source: 1704113-01

Prepared & Analyzed: 04/11/17

C10-C28 (DRO)	670	50	mg/kg	499	164	101	50-148			
Surrogate: o-Terphenyl	14.2		"	12.5		114	30-150			

Matrix Spike Dup (1704119-MSD1)

Source: 1704113-01

Prepared & Analyzed: 04/11/17

C10-C28 (DRO)	637	50	mg/kg	499	164	94.9	50-148	4.94	20	
Surrogate: o-Terphenyl	13.9		"	12.5		111	30-150			

Summit Scientific

The results in this report apply to the samples analyzed in accordance with the chain of custody document. This analytical report must be reproduced in its entirety.



DCP Operating Company
370 17th Street #2500
Denver CO, 80202

Project: Eaton Commons
Project Number: [none]
Project Manager: Brian Humphrey

Reported:
04/12/17 00:25

Volatile Organic Compounds by EPA Method 8260B - Quality Control
Summit Scientific

Analyte	Reporting			Spike	Source		%REC		RPD	
	Result	Limit	Units	Level	Result	%REC	Limits	RPD	Limit	Notes

Batch 1704092 - EPA 5030 Soil MS

Blank (1704092-BLK1)

Prepared & Analyzed: 04/11/17

Benzene	ND	0.0020	mg/kg							
Toluene	ND	0.0050	"							
Ethylbenzene	ND	0.0050	"							
Xylenes (total)	ND	0.0050	"							
Gasoline Range Hydrocarbons	ND	0.50	"							
Surrogate: 1,2-Dichloroethane-d4	0.0390		"	0.0400		97.6	23-173			
Surrogate: Toluene-d8	0.0397		"	0.0400		99.2	20-170			
Surrogate: 4-Bromofluorobenzene	0.0377		"	0.0400		94.2	21-167			

LCS (1704092-BS1)

Prepared & Analyzed: 04/11/17

Benzene	0.0871	0.0020	mg/kg	0.100		87.1	58-130			
Toluene	0.102	0.0050	"	0.100		102	61-134			
Ethylbenzene	0.114	0.0050	"	0.0992		115	74-139			
m,p-Xylene	0.246	0.010	"	0.200		123	73-137			
o-Xylene	0.111	0.0050	"	0.0980		113	73-141			
Xylenes (total)	0.356	0.0050	"				30-150			
Gasoline Range Hydrocarbons	2.38	0.50	"				30-150			
Surrogate: 1,2-Dichloroethane-d4	0.0412		"	0.0400		103	23-173			
Surrogate: Toluene-d8	0.0399		"	0.0400		99.7	20-170			
Surrogate: 4-Bromofluorobenzene	0.0365		"	0.0400		91.3	21-167			

Matrix Spike (1704092-MS1)

Source: 1704090-01

Prepared & Analyzed: 04/11/17

Benzene	0.0821	0.0020	mg/kg	0.100	ND	82.1	30-131			
Toluene	0.0988	0.0050	"	0.100	ND	98.8	30-134			
Ethylbenzene	0.116	0.0050	"	0.0992	ND	117	22-153			
m,p-Xylene	0.250	0.010	"	0.200	ND	125	10-159			
o-Xylene	0.111	0.0050	"	0.0980	ND	113	31-151			
Xylenes (total)	0.361	0.0050	"		ND		30-150			
Gasoline Range Hydrocarbons	2.51	0.50	"		ND		30-150			
Surrogate: 1,2-Dichloroethane-d4	0.0375		"	0.0400		93.8	23-173			
Surrogate: Toluene-d8	0.0379		"	0.0400		94.6	20-170			
Surrogate: 4-Bromofluorobenzene	0.0388		"	0.0400		97.1	21-167			

Summit Scientific

The results in this report apply to the samples analyzed in accordance with the chain of custody document. This analytical report must be reproduced in its entirety.



DCP Operating Company
370 17th Street #2500
Denver CO, 80202

Project: Eaton Commons
Project Number: [none]
Project Manager: Brian Humphrey

Reported:
04/12/17 00:25

Volatile Organic Compounds by EPA Method 8260B - Quality Control
Summit Scientific

Analyte	Reporting			Spike	Source		%REC		RPD	
	Result	Limit	Units	Level	Result	%REC	Limits	RPD	Limit	Notes

Batch 1704092 - EPA 5030 Soil MS

Matrix Spike Dup (1704092-MSD1)		Source: 1704090-01			Prepared & Analyzed: 04/11/17					
Benzene	0.0830	0.0020	mg/kg	0.100	ND	83.0	30-131	1.05	34	
Toluene	0.0988	0.0050	"	0.100	ND	98.8	30-134	0.00	30	
Ethylbenzene	0.114	0.0050	"	0.0992	ND	115	22-153	1.96	24	
m,p-Xylene	0.248	0.010	"	0.200	ND	124	10-159	1.07	68	
o-Xylene	0.110	0.0050	"	0.0980	ND	112	31-151	1.03	38	
Xylenes (total)	0.357	0.0050	"		ND		30-150	1.06	20	
Gasoline Range Hydrocarbons	2.47	0.50	"		ND		30-150	1.44	20	
Surrogate: 1,2-Dichloroethane-d4	0.0396		"	0.0400		99.1	23-173			
Surrogate: Toluene-d8	0.0385		"	0.0400		96.2	20-170			
Surrogate: 4-Bromofluorobenzene	0.0373		"	0.0400		93.3	21-167			

Summit Scientific

The results in this report apply to the samples analyzed in accordance with the chain of custody document. This analytical report must be reproduced in its entirety.



DCP Operating Company
370 17th Street #2500
Denver CO, 80202

Project: Eaton Commons

Project Number: [none]
Project Manager: Brian Humphrey

Reported:
04/12/17 00:25

Notes and Definitions

DET	Analyte DETECTED
ND	Analyte NOT DETECTED at or above the reporting limit
NR	Not Reported
dry	Sample results reported on a dry weight basis
RPD	Relative Percent Difference

Summit Scientific

741 Corporate Circle – Suite I ♦ Golden, Colorado 80401

303.277.9310 - laboratory ♦ 303.277.9531 - fax

April 12, 2017

Brian Humphrey
DCP Operating Company
370 17th Street #2500
Denver, CO 80202
RE: Eaton Commons

Enclosed are the results of analyses for samples received by Summit Scientific on 04/12/17 18:00. If you have any questions concerning this report, please feel free to contact me.

Sincerely,

A handwritten signature in black ink, appearing to read 'Ben Shrewsbury', with a long, sweeping horizontal line extending to the right.

Ben Shrewsbury
Laboratory Manager



DCP Operating Company
370 17th Street #2500
Denver CO, 80202

Project: Eaton Commons
Project Number: [none]
Project Manager: Brian Humphrey

Reported:
04/12/17 22:38

ANALYTICAL REPORT FOR SAMPLES

Sample ID	Laboratory ID	Matrix	Date Sampled	Date Received
SS29@9'	1704130-01	Soil	04/12/17 14:02	04/12/17 18:00
SS30@11'	1704130-02	Soil	04/12/17 14:10	04/12/17 18:00
SS31@9'	1704130-03	Soil	04/12/17 14:30	04/12/17 18:00
SS32@9'	1704130-04	Soil	04/12/17 15:05	04/12/17 18:00

Summit Scientific

The results in this report apply to the samples analyzed in accordance with the chain of custody document. This analytical report must be reproduced in its entirety.



DCP Operating Company
370 17th Street #2500
Denver CO, 80202

Project: Eaton Commons
Project Number: [none]
Project Manager: Brian Humphrey

Reported:
04/12/17 22:38

Sample Receipt Checklist

S2 Work Order: 1704130

Client: DCP/Tasman

Client Project ID: Eaton Commons

Shipped Via: _____
(UPS, FedEx, Hand Delivered, Pick-up, etc.)

Airbill #: _____

Matrix (check all that apply): ☐ Air ☒ Soil/Solid ☐ Water ☐ Other: _____
(Describe)

Cooler ID					
Temp (°C)	4.3				

Thermometer ID: 61857155-K

	Yes	No	N/A	Comments (if any)
If samples require cooling, was the temperature just above 0°C to ≤ 6°C ⁽¹⁾ ?	✓			
NOTE: If samples are delivered the same day of sampling, this requirement is waived provided that there is evidence that cooling has begun.				
Were all samples received intact ⁽¹⁾ ?	✓			
Was adequate sample volume provided ⁽¹⁾ ?	✓			
If custody seals are present, are they intact ⁽¹⁾ ?				
Are short holding time analytes or samples with HTs due within 48 hours present?			✓	
Is a chain-of-custody (COC) form present and filled out completely ⁽¹⁾ ?			✓	
Does the COC agree with the number and type of sample bottles received ⁽¹⁾ ?	✓			
Do the sample IDs on the bottle labels match the COC ⁽¹⁾ ?	✓			
Is the COC properly relinquished by the client w/ date and time recorded ⁽¹⁾ ?	✓			
For volatiles in water – is there headspace present? If yes, contact client and note in narrative.				
Are samples preserved that require preservation (excluding cooling) ⁽¹⁾ ?			✓	
Note the type of preservative in the Comments column – HCl, H2SO4, NaOH, HNO3, ect			✓	
If samples are acid preserved for metals, is the pH ≤ 2 ⁽¹⁾ ?			✓	
Record the pH in Comments.			✓	
If dissolved metals are requested, were samples field filtered?			✓	
Additional Comments (if any):				
⁽¹⁾ If NO, then contact the client before proceeding with analysis and note in case narrative.				

Nakitz
Custodian Printed Name

[Signature]
Signature or Initials of Custodian

4/12/17 1740
Date/Time



DCP Operating Company
370 17th Street #2500
Denver CO, 80202

Project: Eaton Commons
Project Number: [none]
Project Manager: Brian Humphrey

Reported:
04/12/17 22:38

SS29@9'
1704130-01 (Soil)

Summit Scientific

Extractable Petroleum Hydrocarbons by 8015

Date Sampled: **04/12/17 14:02**

Analyte	Result	Reporting Limit	Units	Dilution	Batch	Prepared	Analyzed	Method	Notes
C10-C28 (DRO)	ND	50	mg/kg	1	1704139	04/12/17	04/12/17	8015M	

Date Sampled: **04/12/17 14:02**

Analyte	Result	Reporting Limit	Units	Dilution	Batch	Prepared	Analyzed	Method	Notes
Surrogate: o-Terphenyl		117 %	30-150		"	"	"	"	

Volatile Organic Compounds by EPA Method 8260B

Date Sampled: **04/12/17 14:02**

Analyte	Result	Reporting Limit	Units	Dilution	Batch	Prepared	Analyzed	Method	Notes
Benzene	ND	0.0020	mg/kg	1	1704138	04/12/17	04/12/17	EPA 8260B	
Toluene	ND	0.0050	"	"	"	"	"	"	
Ethylbenzene	ND	0.0050	"	"	"	"	"	"	
Xylenes (total)	ND	0.0050	"	"	"	"	"	"	
Gasoline Range Hydrocarbons	ND	0.50	"	"	"	"	"	"	

Date Sampled: **04/12/17 14:02**

Analyte	Result	Reporting Limit	Units	Dilution	Batch	Prepared	Analyzed	Method	Notes
Surrogate: 1,2-Dichloroethane-d4		104 %	23-173		"	"	"	"	
Surrogate: Toluene-d8		96.8 %	20-170		"	"	"	"	
Surrogate: 4-Bromofluorobenzene		93.2 %	21-167		"	"	"	"	

Summit Scientific

The results in this report apply to the samples analyzed in accordance with the chain of custody document. This analytical report must be reproduced in its entirety.



DCP Operating Company
370 17th Street #2500
Denver CO, 80202

Project: Eaton Commons
Project Number: [none]
Project Manager: Brian Humphrey

Reported:
04/12/17 22:38

SS30@11'
1704130-02 (Soil)

Summit Scientific

Extractable Petroleum Hydrocarbons by 8015

Date Sampled: **04/12/17 14:10**

Analyte	Result	Reporting Limit	Units	Dilution	Batch	Prepared	Analyzed	Method	Notes
C10-C28 (DRO)	ND	50	mg/kg	1	1704139	04/12/17	04/12/17	8015M	

Date Sampled: **04/12/17 14:10**

Analyte	Result	Reporting Limit	Units	Dilution	Batch	Prepared	Analyzed	Method	Notes
Surrogate: o-Terphenyl		91.8 %	30-150		"	"	"	"	

Volatile Organic Compounds by EPA Method 8260B

Date Sampled: **04/12/17 14:10**

Analyte	Result	Reporting Limit	Units	Dilution	Batch	Prepared	Analyzed	Method	Notes
Benzene	ND	0.0020	mg/kg	1	1704138	04/12/17	04/12/17	EPA 8260B	
Toluene	0.0055	0.0050	"	"	"	"	"	"	
Ethylbenzene	ND	0.0050	"	"	"	"	"	"	
Xylenes (total)	0.018	0.0050	"	"	"	"	"	"	
Gasoline Range Hydrocarbons	ND	0.50	"	"	"	"	"	"	

Date Sampled: **04/12/17 14:10**

Analyte	Result	Reporting Limit	Units	Dilution	Batch	Prepared	Analyzed	Method	Notes
Surrogate: 1,2-Dichloroethane-d4		102 %	23-173		"	"	"	"	
Surrogate: Toluene-d8		97.6 %	20-170		"	"	"	"	
Surrogate: 4-Bromofluorobenzene		95.8 %	21-167		"	"	"	"	

Summit Scientific

The results in this report apply to the samples analyzed in accordance with the chain of custody document. This analytical report must be reproduced in its entirety.



DCP Operating Company
370 17th Street #2500
Denver CO, 80202

Project: Eaton Commons
Project Number: [none]
Project Manager: Brian Humphrey

Reported:
04/12/17 22:38

SS31@9'
1704130-03 (Soil)

Summit Scientific

Extractable Petroleum Hydrocarbons by 8015

Date Sampled: 04/12/17 14:30

Analyte	Result	Reporting Limit	Units	Dilution	Batch	Prepared	Analyzed	Method	Notes
C10-C28 (DRO)	ND	50	mg/kg	1	1704139	04/12/17	04/12/17	8015M	

Date Sampled: 04/12/17 14:30

Analyte	Result	Reporting Limit	Units	Dilution	Batch	Prepared	Analyzed	Method	Notes
Surrogate: o-Terphenyl		104 %	30-150		"	"	"	"	

Volatile Organic Compounds by EPA Method 8260B

Date Sampled: 04/12/17 14:30

Analyte	Result	Reporting Limit	Units	Dilution	Batch	Prepared	Analyzed	Method	Notes
Benzene	ND	0.0020	mg/kg	1	1704138	04/12/17	04/12/17	EPA 8260B	
Toluene	ND	0.0050	"	"	"	"	"	"	
Ethylbenzene	ND	0.0050	"	"	"	"	"	"	
Xylenes (total)	ND	0.0050	"	"	"	"	"	"	
Gasoline Range Hydrocarbons	3.6	0.50	"	"	"	"	"	"	

Date Sampled: 04/12/17 14:30

Analyte	Result	Reporting Limit	Units	Dilution	Batch	Prepared	Analyzed	Method	Notes
Surrogate: 1,2-Dichloroethane-d4		100 %	23-173		"	"	"	"	
Surrogate: Toluene-d8		96.2 %	20-170		"	"	"	"	
Surrogate: 4-Bromofluorobenzene		102 %	21-167		"	"	"	"	

Summit Scientific

The results in this report apply to the samples analyzed in accordance with the chain of custody document. This analytical report must be reproduced in its entirety.



DCP Operating Company
370 17th Street #2500
Denver CO, 80202

Project: Eaton Commons
Project Number: [none]
Project Manager: Brian Humphrey

Reported:
04/12/17 22:38

SS32@9'
1704130-04 (Soil)

Summit Scientific

Extractable Petroleum Hydrocarbons by 8015

Date Sampled: 04/12/17 15:05

Analyte	Result	Reporting Limit	Units	Dilution	Batch	Prepared	Analyzed	Method	Notes
C10-C28 (DRO)	ND	50	mg/kg	1	1704139	04/12/17	04/12/17	8015M	

Date Sampled: 04/12/17 15:05

Analyte	Result	Reporting Limit	Units	Dilution	Batch	Prepared	Analyzed	Method	Notes
Surrogate: o-Terphenyl		102 %	30-150		"	"	"	"	

Volatile Organic Compounds by EPA Method 8260B

Date Sampled: 04/12/17 15:05

Analyte	Result	Reporting Limit	Units	Dilution	Batch	Prepared	Analyzed	Method	Notes
Benzene	ND	0.0020	mg/kg	1	1704138	04/12/17	04/12/17	EPA 8260B	
Toluene	ND	0.0050	"	"	"	"	"	"	
Ethylbenzene	ND	0.0050	"	"	"	"	"	"	
Xylenes (total)	ND	0.0050	"	"	"	"	"	"	
Gasoline Range Hydrocarbons	0.55	0.50	"	"	"	"	"	"	

Date Sampled: 04/12/17 15:05

Analyte	Result	Reporting Limit	Units	Dilution	Batch	Prepared	Analyzed	Method	Notes
Surrogate: 1,2-Dichloroethane-d4		103 %	23-173		"	"	"	"	
Surrogate: Toluene-d8		99.3 %	20-170		"	"	"	"	
Surrogate: 4-Bromofluorobenzene		102 %	21-167		"	"	"	"	

Summit Scientific

The results in this report apply to the samples analyzed in accordance with the chain of custody document. This analytical report must be reproduced in its entirety.



DCP Operating Company
370 17th Street #2500
Denver CO, 80202

Project: Eaton Commons
Project Number: [none]
Project Manager: Brian Humphrey

Reported:
04/12/17 22:38

Extractable Petroleum Hydrocarbons by 8015 - Quality Control
Summit Scientific

Analyte	Reporting			Spike	Source		%REC		RPD	
	Result	Limit	Units	Level	Result	%REC	Limits	RPD	Limit	Notes

Batch 1704139 - EPA 3550A

Blank (1704139-BLK1)

Prepared & Analyzed: 04/12/17

C10-C28 (DRO) ND 50 mg/kg

Surrogate: o-Terphenyl 13.7 " 12.5 109 30-150

LCS (1704139-BS1)

Prepared & Analyzed: 04/12/17

C10-C28 (DRO) 482 50 mg/kg 499 96.6 73-134

Surrogate: o-Terphenyl 13.4 " 12.5 107 30-150

Matrix Spike (1704139-MS1)

Source: 1704130-01

Prepared & Analyzed: 04/12/17

C10-C28 (DRO) 495 50 mg/kg 499 25.5 94.1 50-148

Surrogate: o-Terphenyl 13.7 " 12.5 110 30-150

Matrix Spike Dup (1704139-MSD1)

Source: 1704130-01

Prepared & Analyzed: 04/12/17

C10-C28 (DRO) 518 50 mg/kg 499 25.5 98.7 50-148 4.57 20

Surrogate: o-Terphenyl 14.4 " 12.5 115 30-150

Summit Scientific

The results in this report apply to the samples analyzed in accordance with the chain of custody document. This analytical report must be reproduced in its entirety.



DCP Operating Company
370 17th Street #2500
Denver CO, 80202

Project: Eaton Commons
Project Number: [none]
Project Manager: Brian Humphrey

Reported:
04/12/17 22:38

Volatile Organic Compounds by EPA Method 8260B - Quality Control
Summit Scientific

Analyte	Reporting			Spike	Source		%REC		RPD	
	Result	Limit	Units	Level	Result	%REC	Limits	RPD	Limit	Notes

Batch 1704138 - EPA 5030 Soil MS

Blank (1704138-BLK1)

Prepared & Analyzed: 04/12/17

Benzene	ND	0.0020	mg/kg							
Toluene	ND	0.0050	"							
Ethylbenzene	ND	0.0050	"							
Xylenes (total)	ND	0.0050	"							
Gasoline Range Hydrocarbons	ND	0.50	"							
Surrogate: 1,2-Dichloroethane-d4	0.0423		"	0.0400		106	23-173			
Surrogate: Toluene-d8	0.0419		"	0.0400		105	20-170			
Surrogate: 4-Bromofluorobenzene	0.0382		"	0.0400		95.6	21-167			

LCS (1704138-BS1)

Prepared & Analyzed: 04/12/17

Benzene	0.0822	0.0020	mg/kg	0.100		82.2	58-130			
Toluene	0.100	0.0050	"	0.100		100	61-134			
Ethylbenzene	0.111	0.0050	"	0.0992		112	74-139			
m,p-Xylene	0.240	0.010	"	0.200		120	73-137			
o-Xylene	0.107	0.0050	"	0.0980		109	73-141			
Xylenes (total)	0.346	0.0050	"				30-150			
Gasoline Range Hydrocarbons	2.29	0.50	"				30-150			
Surrogate: 1,2-Dichloroethane-d4	0.0402		"	0.0400		101	23-173			
Surrogate: Toluene-d8	0.0400		"	0.0400		99.9	20-170			
Surrogate: 4-Bromofluorobenzene	0.0368		"	0.0400		91.9	21-167			

Matrix Spike (1704138-MS1)

Source: 1704130-01

Prepared & Analyzed: 04/12/17

Benzene	0.0869	0.0020	mg/kg	0.100	ND	86.9	30-131			
Toluene	0.101	0.0050	"	0.100	ND	101	30-134			
Ethylbenzene	0.113	0.0050	"	0.0992	ND	114	22-153			
m,p-Xylene	0.247	0.010	"	0.200	ND	124	10-159			
o-Xylene	0.110	0.0050	"	0.0980	ND	113	31-151			
Xylenes (total)	0.357	0.0050	"		ND		30-150			
Gasoline Range Hydrocarbons	2.61	0.50	"		ND		30-150			
Surrogate: 1,2-Dichloroethane-d4	0.0424		"	0.0400		106	23-173			
Surrogate: Toluene-d8	0.0394		"	0.0400		98.6	20-170			
Surrogate: 4-Bromofluorobenzene	0.0372		"	0.0400		93.0	21-167			

Summit Scientific

The results in this report apply to the samples analyzed in accordance with the chain of custody document. This analytical report must be reproduced in its entirety.



DCP Operating Company
370 17th Street #2500
Denver CO, 80202

Project: Eaton Commons
Project Number: [none]
Project Manager: Brian Humphrey

Reported:
04/12/17 22:38

Volatile Organic Compounds by EPA Method 8260B - Quality Control
Summit Scientific

Analyte	Reporting			Spike	Source		%REC		RPD	
	Result	Limit	Units	Level	Result	%REC	Limits	RPD	Limit	Notes

Batch 1704138 - EPA 5030 Soil MS

Matrix Spike Dup (1704138-MSD1)		Source: 1704130-01			Prepared & Analyzed: 04/12/17					
Benzene	0.0842	0.0020	mg/kg	0.100	ND	84.2	30-131	3.16	34	
Toluene	0.101	0.0050	"	0.100	ND	101	30-134	0.505	30	
Ethylbenzene	0.114	0.0050	"	0.0992	ND	115	22-153	0.981	24	
m,p-Xylene	0.250	0.010	"	0.200	ND	125	10-159	1.23	68	
o-Xylene	0.109	0.0050	"	0.0980	ND	111	31-151	1.23	38	
Xylenes (total)	0.359	0.0050	"		ND		30-150	0.478	20	
Gasoline Range Hydrocarbons	2.71	0.50	"		ND		30-150	3.89	20	
Surrogate: 1,2-Dichloroethane-d4	0.0398		"	0.0400		99.5	23-173			
Surrogate: Toluene-d8	0.0390		"	0.0400		97.6	20-170			
Surrogate: 4-Bromofluorobenzene	0.0393		"	0.0400		98.2	21-167			

Summit Scientific

The results in this report apply to the samples analyzed in accordance with the chain of custody document. This analytical report must be reproduced in its entirety.



DCP Operating Company
370 17th Street #2500
Denver CO, 80202

Project: Eaton Commons
Project Number: [none]
Project Manager: Brian Humphrey

Reported:
04/12/17 22:38

Notes and Definitions

DET	Analyte DETECTED
ND	Analyte NOT DETECTED at or above the reporting limit
NR	Not Reported
dry	Sample results reported on a dry weight basis
RPD	Relative Percent Difference

Appendix D

Supplemental Excavation Groundwater Sample Laboratory Analytical Report

- Summit Scientific 1704129

Summit Scientific

741 Corporate Circle – Suite I ♦ Golden, Colorado 80401

303.277.9310 - laboratory ♦ 303.277.9531 - fax

April 12, 2017

Brian Humphrey
Tasman Geosciences
6899 Pecos Street
Denver, CO 80221
RE: Eaton Commons

Enclosed are the results of analyses for samples received by Summit Scientific on 04/12/17 10:20. If you have any questions concerning this report, please feel free to contact me.

Sincerely,

A handwritten signature in black ink, appearing to read 'Ben Shrewsbury', with a long, sweeping horizontal line extending to the right.

Ben Shrewsbury
Laboratory Manager



Tasman Geosciences
6899 Pecos Street
Denver CO, 80221

Project: Eaton Commons
Project Number: [none]
Project Manager: Brian Humphrey

Reported:
04/12/17 18:33

ANALYTICAL REPORT FOR SAMPLES

Sample ID	Laboratory ID	Matrix	Date Sampled	Date Received
GW02	1704128-01	Water	04/12/17 08:37	04/12/17 10:20

Summit Scientific

The results in this report apply to the samples analyzed in accordance with the chain of custody document. This analytical report must be reproduced in its entirety.

A handwritten signature in black ink, appearing to be 'B. Humphrey'.



Tasman Geosciences
6899 Pecos Street
Denver CO, 80221

Project: Eaton Commons
Project Number: [none]
Project Manager: Brian Humphrey

Reported:
04/12/17 18:33

GW02
1704128-01 (Water)

Summit Scientific

Volatile Organic Compounds by EPA Method 8260B

Date Sampled: **04/12/17 08:37**

Analyte	Result	Reporting Limit	Units	Dilution	Batch	Prepared	Analyzed	Method	Notes
Benzene	4.0	1.0	ug/l	1	1704090	04/12/17	04/12/17	EPA 8260B	
Toluene	10	1.0	"	"	"	"	"	"	
Ethylbenzene	3.0	1.0	"	"	"	"	"	"	
Xylenes (total)	10	2.0	"	"	"	"	"	"	

Date Sampled: **04/12/17 08:37**

Analyte	Result	Reporting Limit	Units	Dilution	Batch	Prepared	Analyzed	Method	Notes
<i>Surrogate: 1,2-Dichloroethane-d4</i>		99.1 %	37-154		"	"	"	"	
<i>Surrogate: Toluene-d8</i>		93.4 %	45-149		"	"	"	"	
<i>Surrogate: 4-Bromofluorobenzene</i>		99.3 %	45-146		"	"	"	"	

Summit Scientific

The results in this report apply to the samples analyzed in accordance with the chain of custody document. This analytical report must be reproduced in its entirety.



Tasman Geosciences
6899 Pecos Street
Denver CO, 80221

Project: Eaton Commons
Project Number: [none]
Project Manager: Brian Humphrey

Reported:
04/12/17 18:33

Volatile Organic Compounds by EPA Method 8260B - Quality Control

Summit Scientific

Analyte	Reporting			Spike	Source		%REC		RPD	
	Result	Limit	Units	Level	Result	%REC	Limits	RPD	Limit	Notes

Batch 1704090 - EPA 5030 Water MS

Blank (1704090-BLK1)

Prepared & Analyzed: 04/11/17

Benzene	ND	1.0	ug/l							
Toluene	ND	1.0	"							
Ethylbenzene	ND	1.0	"							
Xylenes (total)	ND	2.0	"							
Surrogate: 1,2-Dichloroethane-d4	11.9		"	13.3		89.5	37-154			
Surrogate: Toluene-d8	12.1		"	13.3		90.8	45-149			
Surrogate: 4-Bromofluorobenzene	13.1		"	13.3		98.3	45-146			

LCS (1704090-BS1)

Prepared & Analyzed: 04/12/17

Benzene	36.3	1.0	ug/l	33.3		109	51-132			
Toluene	37.2	1.0	"	33.3		112	51-138			
Ethylbenzene	40.6	1.0	"	33.1		123	58-146			
m,p-Xylene	41.8	2.0	"	66.5		62.8	57-144			
o-Xylene	38.0	1.0	"	32.7		116	53-146			
Surrogate: 1,2-Dichloroethane-d4	12.7		"	13.3		95.5	37-154			
Surrogate: Toluene-d8	12.6		"	13.3		94.4	45-149			
Surrogate: 4-Bromofluorobenzene	13.0		"	13.3		97.3	45-146			

Matrix Spike (1704090-MS1)

Source: 1704065-01

Prepared & Analyzed: 04/12/17

Benzene	37.6	1.0	ug/l	33.3	ND	113	34-141			
Toluene	37.1	1.0	"	33.3	ND	111	27-151			
Ethylbenzene	47.0	1.0	"	33.1	ND	142	29-160			
m,p-Xylene	53.1	2.0	"	66.5	ND	79.9	20-166			
o-Xylene	39.1	1.0	"	32.7	ND	120	33-159			
Surrogate: 1,2-Dichloroethane-d4	13.1		"	13.3		98.3	37-154			
Surrogate: Toluene-d8	12.4		"	13.3		93.4	45-149			
Surrogate: 4-Bromofluorobenzene	13.1		"	13.3		98.0	45-146			

Summit Scientific

The results in this report apply to the samples analyzed in accordance with the chain of custody document. This analytical report must be reproduced in its entirety.



Tasman Geosciences
6899 Pecos Street
Denver CO, 80221

Project: Eaton Commons
Project Number: [none]
Project Manager: Brian Humphrey

Reported:
04/12/17 18:33

Volatile Organic Compounds by EPA Method 8260B - Quality Control
Summit Scientific

Analyte	Reporting			Spike	Source		%REC		RPD	
	Result	Limit	Units	Level	Result	%REC	Limits	RPD	Limit	Notes

Batch 1704090 - EPA 5030 Water MS

Matrix Spike Dup (1704090-MSD1)	Source: 1704065-01			Prepared & Analyzed: 04/12/17						
Benzene	38.5	1.0	ug/l	33.3	ND	115	34-141	2.31	32	
Toluene	38.0	1.0	"	33.3	ND	114	27-151	2.32	25	
Ethylbenzene	47.5	1.0	"	33.1	ND	144	29-160	1.02	50	
m,p-Xylene	53.0	2.0	"	66.5	ND	79.7	20-166	0.226	36	
o-Xylene	40.2	1.0	"	32.7	ND	123	33-159	2.82	26	
Surrogate: 1,2-Dichloroethane-d4	12.9		"	13.3		97.1	37-154			
Surrogate: Toluene-d8	12.5		"	13.3		93.5	45-149			
Surrogate: 4-Bromofluorobenzene	13.2		"	13.3		98.9	45-146			

Summit Scientific

The results in this report apply to the samples analyzed in accordance with the chain of custody document. This analytical report must be reproduced in its entirety.



Tasman Geosciences
6899 Pecos Street
Denver CO, 80221

Project: Eaton Commons

Project Number: [none]
Project Manager: Brian Humphrey

Reported:
04/12/17 18:33

Notes and Definitions

DET	Analyte DETECTED
ND	Analyte NOT DETECTED at or above the reporting limit
NR	Not Reported
dry	Sample results reported on a dry weight basis
RPD	Relative Percent Difference

Appendix E

Groundwater Monitoring Well Boring Logs (BH09, BH10, & BH11)

Borehole Logging Form

Boring/Well ID #: <u>BH09</u>		SITE NAME: <u>Eaton Commons</u>		CLIENT NAME: <u>DCP</u>	
Date Started: <u>4/17/17</u>		Location: <u>Eaton CO</u>			
Date Completed: <u>4/17/17</u>		TOC Elevation: <u>-</u>		DTW: <u>13'</u>	
Type of Drill: <u>Auger</u>		Geologist: <u>GB</u>			
Bit Size: <u>4.5"</u>		Project Manager: <u>BH</u>			
Drilling Company: <u>Tasman</u>					

Depth (feet)	Well Completion	Sample Type	% Recovery	PID (ppm)	Laboratory Sample	USCS	Description
1	Bent Seal						
2							
3							
4							
5							
6							
7							
8							
9							
10							
11							
12							
13							
14	Sond						
15							
16							
17							
18							
19							
20							
21							
22							
23							
24							
25							
			Auger	N/A	N/A	N/A	SP
		Auger	N/A	N/A	N/A	CL	light brown, saturated, smooth, low plasticity, fine grains TD = 19'

Boring/Well ID #: BH10		SITE NAME: Eaton Commons		CLIENT NAME: DCP	
Date Started: 4/17/17		Location: Eaton, CO			
Date Completed: 4/17/17		TOC Elevation: -		DTW: 13'	
Type of Drill: Auger		Geologist: GB			
Bit Size: 4.5"		Project Manager: BH			
Drilling Company: Tasman					

Depth (feet)	Well Completion	Sample Type	% Recovery	PID (ppm)	Laboratory Sample	USCS	Description
1	Box Seal		N/A	N/A	N/A	OL	Top soil, dark brown, organics
2						CL	light brown, oxidation, calcite, stiff, med plasticity
3						CL	Brown, stiff, oxidation, med plasticity
4						SC	light brown, no plasticity, low cohesion, fine grains,
5	Auger		N/A	N/A	N/A		
6							
7							
8							
9							
10							
11							
12							
13							
14							
15	N/A	N/A	N/A	N/A	SP	tan, moist, oxidation, loose, fine grains	
16					CL	moist, light tan, low plasticity, cohesion	
17					CH	Dark brown, hard, med plasticity, low moisture, coarse grains	
18							
19							
20							TD = 18'
21							
22							
23							
24							
25							

Boring/Well ID #: BH11		SITE NAME: Eaton Commons		CLIENT NAME: DCP	
Date Started: 4/17/17		Location: Eaton, CO			
Date Completed: 4/17/17		TOC Elevation: -		DTW: 13'	
Type of Drill: Auger		Geologist: GB			
Bit Size: 4.5"		Project Manager: BH			
Drilling Company: Tasman					

Depth (feet)	Well Completion	Sample Type	% Recovery	PID (ppm)	Laboratory Sample	USCS	Description			
1	Ben Es/	Auger	N/A	N/A	N/A	CL	Road base			
2							Dark gray, stiff, oxidation throughout, caliche, low moisture, low plasticity			
3										
4										
5	Sand									
6										
7							CL	Dark gray - black, oxidation, med plasticity, low moisture, loose		
8							N/A	N/A	N/A	
9										
10										
11							CL	light brown, caliche, oxidation, low moisture, low plasticity, low cohesion		
12							N/A	N/A	N/A	
13							SC	tan, moist - very moist, cohesion, poorly sorted grains,		
14							N/A	N/A	N/A	
15							CL	light brown, low plasticity, cohesion, moist		
16							N/A	N/A	N/A	
17								same as above w/ less moisture		
18							CL	brown, stiff, low plasticity, low moisture		
19						TD = 18'				
20										
21										
22										
23										
24										
25										