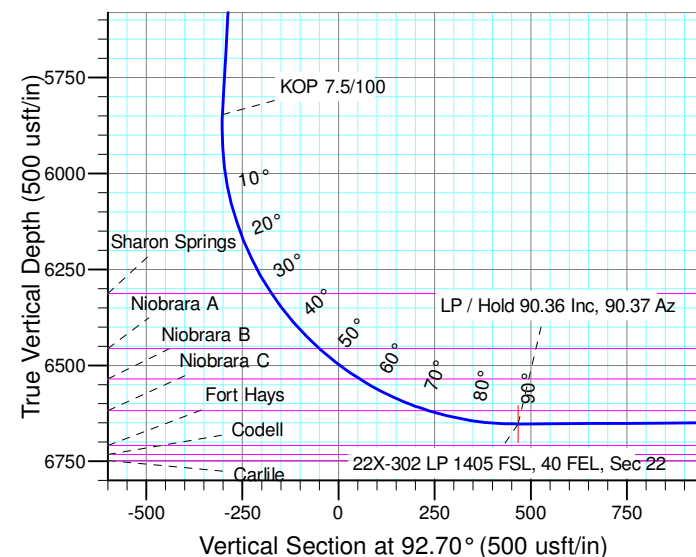


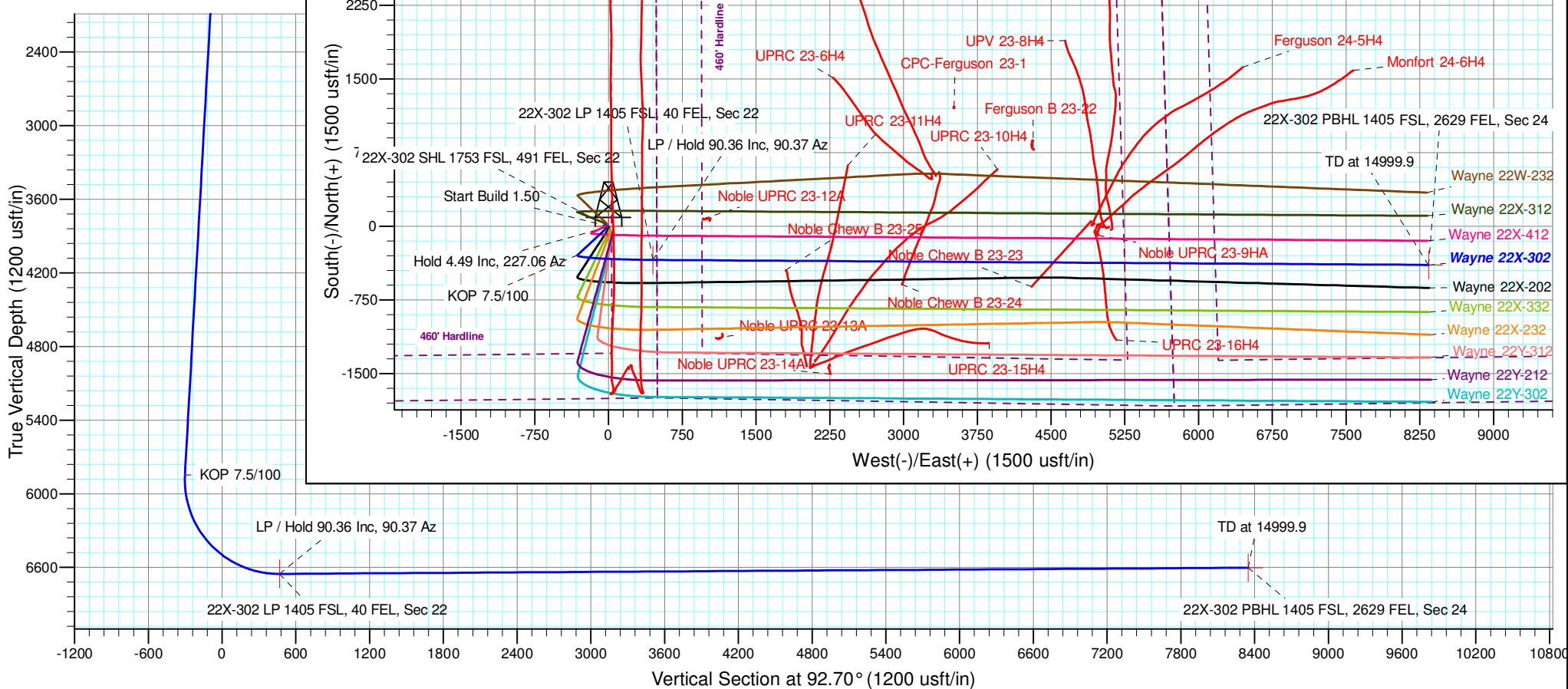
SECTION DETAILS										
Sec	MD	Inc	Azi	TVD	+N/-S	+E/-W	Dleg	TFace	VSec	Target
1	0.0	0.00	0.00	0.0	0.0	0.0	0.00	0.00	0.0	
2	200.0	0.00	0.00	200.0	0.0	0.0	0.00	0.00	0.0	
3	499.1	4.49	227.06	498.8	-8.0	-8.6	1.50	227.06	-8.2	
4	5863.5	4.49	227.06	5846.8	-293.8	-315.7	0.00	0.00	-301.5	
5	7111.9	90.36	90.37	6653.0	-342.4	451.5	7.50	-136.58	467.2	22X-302 LP 1405 FSL, 40 FEL, Sec 22
6	14999.9	90.36	90.37	6603.0	-393.1	8339.3	0.00	0.00	8348.5	22X-302 PBHL 1405 FSL, 2629 FEL, Sec 24



Azimuths to True North
Magnetic North: 8.10°

Magnetic Field
Strength: 52423.7snT
Dip Angle: 66.88°
Date: 05/03/2017
Model: IGRF2015

Project: SEC. 22-T5N-R64W
Site: Wayne 5N64W22X 1-10 PAD
Well: Wayne 22X-302
Wellbore: Wellbore #1
Design: Design #1 03May17 jps



Summary

Site Name Offset Well - Wellbore - Design	Reference	Offset	Distance		Separation	Warning
	Measured Depth (usft)	Measured Depth (usft)	Between Centres (usft)	Between Ellipses (usft)		
Existing Wells Sec. 22-T5N-R64W						
Ledford 22Y-341 - Wellbore #1 - Wellbore #1	6,754.8	7,726.0	115.3	86.1	3.958	CC, ES, SF
Ledford 22Y-401 - Wellbore #1 - Wellbore #1	7,000.0	7,757.6	108.2	84.1	4.482	SF
Ledford 22Y-401 - Wellbore #1 - Wellbore #1	7,008.4	7,757.5	107.9	83.8	4.482	CC, ES
Existing Wells Sec. 23-T5N-R64W						
CPC-Ferguson 23-1 - Wellbore #1 - Wellbore #1 01May1	10,163.7	6,550.0	1,578.8	1,438.7	11.270	CC
CPC-Ferguson 23-1 - Wellbore #1 - Wellbore #1 01May1	10,200.0	6,550.0	1,579.2	1,437.9	11.174	ES
CPC-Ferguson 23-1 - Wellbore #1 - Wellbore #1 01May1	10,700.0	6,550.0	1,667.4	1,509.0	10.528	SF
Ferguson 24-5H4 - Wellbore #1 - Wellbore #1 01May17 j						Out of range
Ferguson B 23-22 - Wellbore #1 - Wellbore #1 01May17	10,974.2	6,556.0	1,148.3	978.5	6.762	CC
Ferguson B 23-22 - Wellbore #1 - Wellbore #1 01May17	11,000.0	6,555.3	1,148.6	977.9	6.728	ES
Ferguson B 23-22 - Wellbore #1 - Wellbore #1 01May17	11,200.0	6,550.2	1,170.3	992.7	6.592	SF
Monfort 24-6H4 - Wellbore #1 - Wellbore #1 01May17 jps						Out of range
Noble Chewy B 23-23 - Wellbore #1 - Wellbore #1	10,965.6	6,693.2	246.7	74.6	1.434	Level 3, CC, ES, SF
Noble Chewy B 23-24 - Wellbore #1 - Wellbore #1	9,646.2	6,778.0	234.6	105.2	1.814	CC, ES, SF
Noble Chewy B 23-25 - Wellbore #1 - Wellbore #1	8,467.5	6,725.6	104.6	15.9	1.179	Level 2, CC, ES, SF
Noble UPRC 23-12A - Wellbore #1 - Wellbore #1	7,623.3	6,629.3	424.8	367.8	7.451	CC, ES
Noble UPRC 23-12A - Wellbore #1 - Wellbore #1	7,700.0	6,629.5	431.7	372.3	7.271	SF
Noble UPRC 23-13A - Wellbore #1 - Wellbore #1	7,756.0	6,634.5	790.9	728.9	12.752	CC
Noble UPRC 23-13A - Wellbore #1 - Wellbore #1	7,800.0	6,632.5	792.2	728.8	12.495	ES
Noble UPRC 23-13A - Wellbore #1 - Wellbore #1	8,100.0	6,619.3	862.4	789.4	11.815	SF
Noble UPRC 23-14A - Wellbore #1 - Wellbore #1	8,926.5	6,602.1	1,151.0	1,051.1	11.524	CC
Noble UPRC 23-14A - Wellbore #1 - Wellbore #1	9,000.0	6,602.8	1,153.4	1,051.0	11.269	ES
Noble UPRC 23-14A - Wellbore #1 - Wellbore #1	9,400.0	6,600.0	1,244.6	1,128.8	10.746	SF
Noble UPRC 23-9HA - Wellbore #1 - Wellbore #1	11,638.9	6,600.0	279.4	86.9	1.451	Level 3, CC, ES, SF
UPRC 23-10H4 - Wellbore #1 - Wellbore #1	10,330.9	7,035.2	750.4	604.7	5.150	CC
UPRC 23-10H4 - Wellbore #1 - Wellbore #1	10,400.0	7,063.0	753.1	603.2	5.027	ES
UPRC 23-10H4 - Wellbore #1 - Wellbore #1	10,600.0	7,142.3	789.6	628.5	4.902	SF
UPRC 23-11H4 - Wellbore #1 - Wellbore #1 01May17 jps	8,997.3	6,765.9	595.3	503.9	6.513	CC
UPRC 23-11H4 - Wellbore #1 - Wellbore #1 01May17 jps	9,000.0	6,766.1	595.4	503.8	6.506	ES
UPRC 23-11H4 - Wellbore #1 - Wellbore #1 01May17 jps	9,100.0	6,775.9	604.0	508.9	6.346	SF
UPRC 23-15H4 - Wellbore #1 - Wellbore #1	10,424.9	7,113.3	828.1	669.8	5.232	CC
UPRC 23-15H4 - Wellbore #1 - Wellbore #1	10,500.0	7,153.2	830.7	669.6	5.157	ES
UPRC 23-15H4 - Wellbore #1 - Wellbore #1	10,600.0	7,198.5	842.4	678.0	5.123	SF
UPRC 23-16H4 - Wellbore #1 - Wellbore #1	11,740.6	6,536.6	624.0	449.6	3.577	CC, ES
UPRC 23-16H4 - Wellbore #1 - Wellbore #1	11,800.0	6,541.7	626.8	449.9	3.543	SF
UPRC 23-3H4 - Wellbore #1 - Wellbore #1 01May17 jps						Out of range
UPRC 23-6H4 - Wellbore #1 - Wellbore #1 01May17 jps						Out of range
UPV 23-1H4 - Wellbore #1 - Wellbore #1 01May17 jps						Out of range
UPV 23-8H4 - Wellbore #1 - Wellbore #1 01May17 jps						Out of range
Wayne 5N64W22X 1-10 PAD						
Wayne 22W-232 - Wellbore #1 - Design #1 03May17 jps	200.0	200.0	45.0	44.2	59.007	CC, ES
Wayne 22W-232 - Wellbore #1 - Design #1 03May17 jps	14,999.9	14,899.4	742.3	163.9	1.283	Level 3, SF
Wayne 22X-202 - Wellbore #1 - Design #1 03May17 jps	200.0	200.0	15.0	14.2	19.683	CC
Wayne 22X-202 - Wellbore #1 - Design #1 03May17 jps	14,999.9	14,932.3	248.0	-306.5	0.447	Level 1, ES, SF
Wayne 22X-232 - Wellbore #1 - Design #1 03May17 jps	200.0	200.0	45.0	44.3	59.028	CC, ES
Wayne 22X-232 - Wellbore #1 - Design #1 03May17 jps	14,999.9	14,991.1	713.2	132.7	1.229	Level 2, SF
Wayne 22X-312 - Wellbore #1 - Design #1 03May17 jps	200.0	200.0	30.0	29.2	39.307	CC
Wayne 22X-312 - Wellbore #1 - Design #1 03May17 jps	14,999.9	14,971.9	500.1	-83.0	0.858	Level 1, ES, SF
Wayne 22X-332 - Wellbore #1 - Design #1 03May17 jps	200.0	200.0	30.0	29.2	39.345	CC
Wayne 22X-332 - Wellbore #1 - Design #1 03May17 jps	14,999.9	15,047.6	479.9	-103.1	0.823	Level 1, ES, SF
Wayne 22X-412 - Wellbore #1 - Design #1 03May17 jps	200.0	200.0	15.0	14.2	19.683	CC
Wayne 22X-412 - Wellbore #1 - Design #1 03May17 jps	14,999.9	14,927.0	261.9	-285.4	0.479	Level 1, ES, SF
Wayne 22Y-212 - Wellbore #1 - Design #1 03May17 jps	200.0	200.0	75.0	74.3	98.373	CC, ES
Wayne 22Y-212 - Wellbore #1 - Design #1 03May17 jps	14,999.9	15,115.5	1,171.3	588.8	2.011	SF
Wayne 22Y-302 - Wellbore #1 - Design #1 03May17 jps	200.0	200.0	90.0	89.2	117.997	CC, ES
Wayne 22Y-302 - Wellbore #1 - Design #1 03May17 jps	14,999.9	15,203.3	1,394.5	811.7	2.393	SF
Wayne 22Y-312 - Wellbore #1 - Design #1 03May17 jps	200.0	200.0	60.0	59.3	78.690	CC, ES
Wayne 22Y-312 - Wellbore #1 - Design #1 03May17 jps	14,999.9	14,894.9	942.7	364.3	1.630	SF