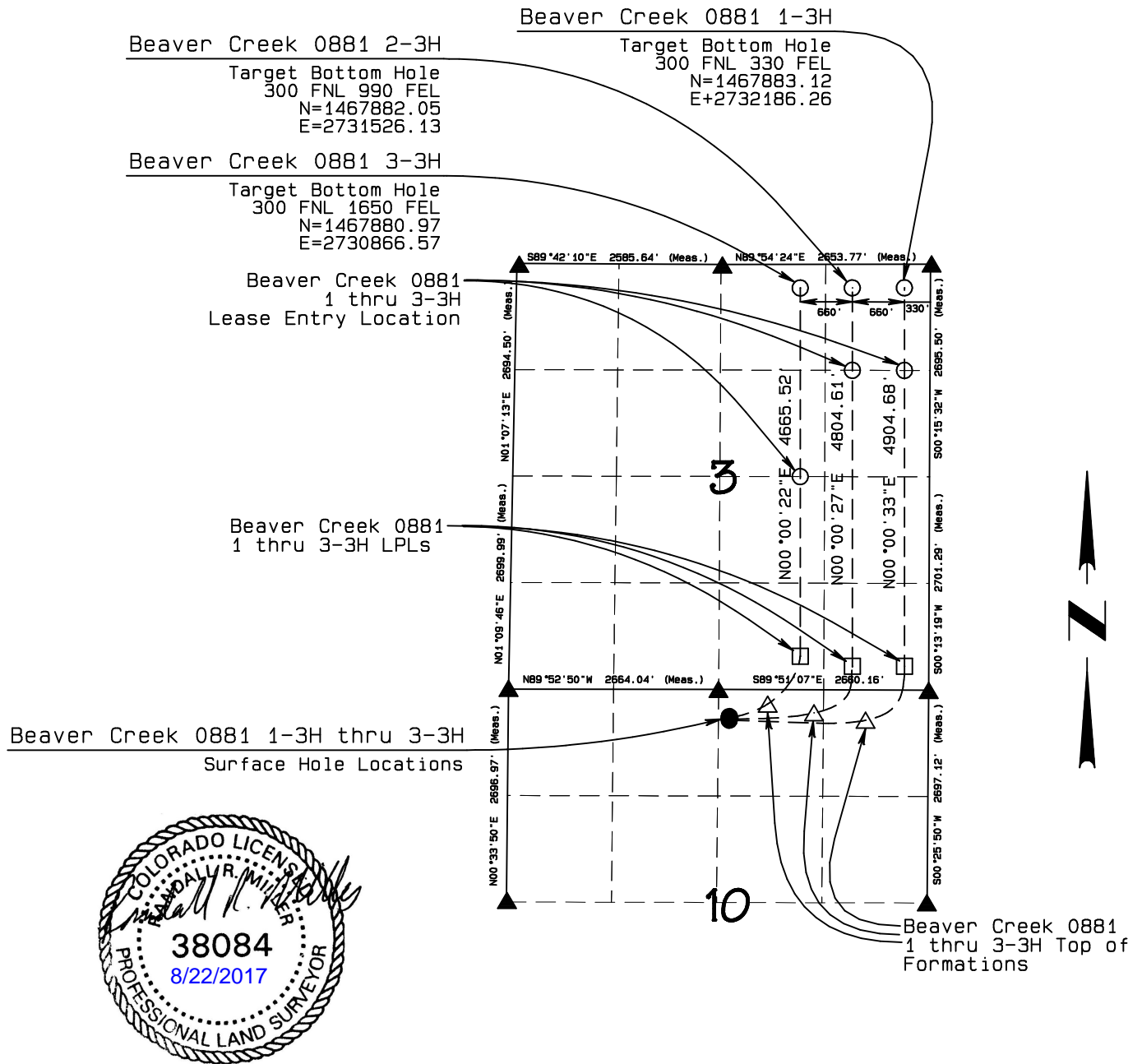


MULTI-WELL PLAN
Beaver Creek 0781 S10 Pad
located as shown in Sections 3 and 10,
T7N, R81W, 6th P.M., Jackson County, Colorado.



BASIS OF ELEVATION

SPOT ELEVATION AT THE NW CORNER OF SECTION 10,
T7N, R81W, 6TH PM, TAKEN FROM THE COALMONT
QUADRANGLE, USGS 7.5 MIN QUAD (TOPOGRAPHIC MAP)
WITH SAID ELEVATION MARKED AS BEING 8251 FEET.

LEGEND

90° SYMBOL
FOUND CORNER
PROPOSED WELL
PROPOSED BHL
PROPOSED LPL
PROPOSED TOF



BASIS OF BEARINGS:
US STATE PLANE 1983
CO NORTH 0501 GRID

NORTH PARK ENGINEERING & CONSULTING, INC.

P.O. BOX 395
WALDEN, CO 80480
(970) 723-3725

DATE OF FIELD WORK: SEP 15, 2016 DRAWING COMPLETION: AUG 22, 2017
SURVEYED BY: LRK DRAWN BY: ADL CHECKED BY: RRM