

# Bayswater Exploration & Production, LLC

Well Name: **Booth M-8-7HN**

Surface Location: Booth 8-L Pad Sec.8-T6N-R66W

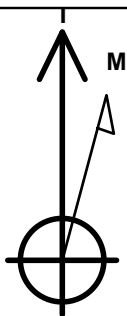
North American Datum 1983 , US State Plane 1983, Colorado Northern Zone

Ground Elevation: 4808.0

+N/-S	+E/-W	Northing	Easting	Latitude	Longitude	Slot
0.0	0.0	1425473.35	3196520.18	40.499176	-104.793347	
RKB - 23' WELL @ 4831.0ft (RKB - 23')						

## WELLBORE TARGET DETAILS

Name	TVD	+N/-S	+E/-W	Shape
SHL 1381'FSL, 249'FEL, SEC.8	1.0	0.0	0.0	Point
BHL 2474'FSL, 2170'FEL, SEC.7	7123.0	848.5	-7245.1	Point
LPL 2480'FSL, 605'FEL, SEC.8	7168.0	1091.1	-365.3	Point



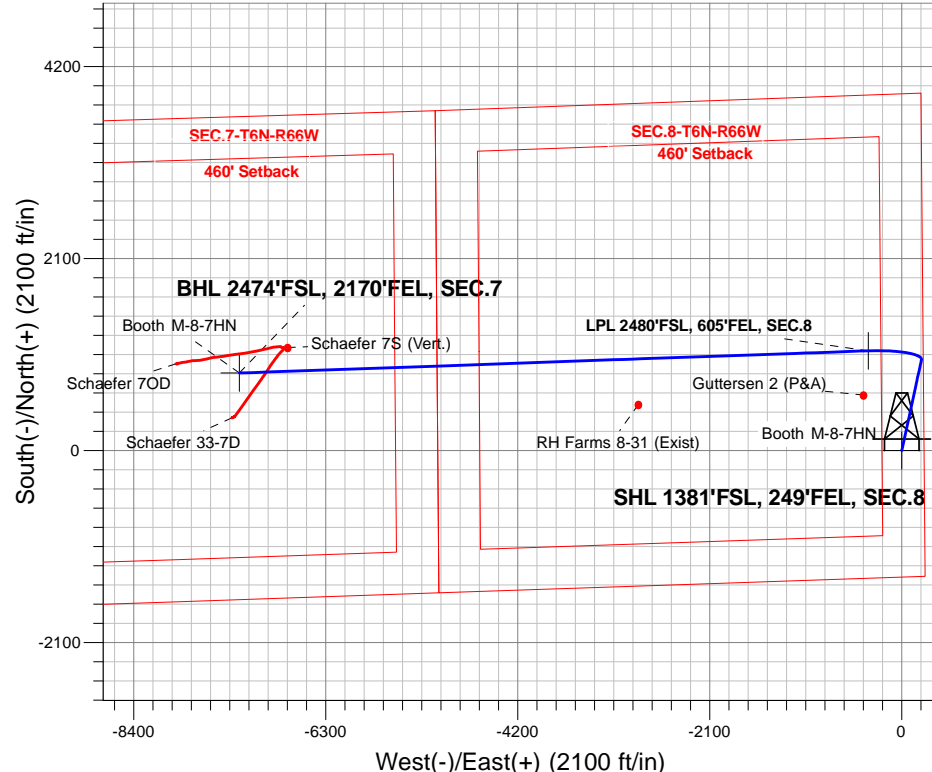
Azimuths to True North  
Magnetic North: 8.09°

Magnetic Field  
Strength: 52557.3nT  
Dip Angle: 66.92°  
Date: 5/15/2017  
Model: IGRF2010

Booth 8-L Pad Sec.8-T6N-R66W  
Booth M-8-7HN  
Plan #1 (5-03-17)  
14:35, May 15 2017

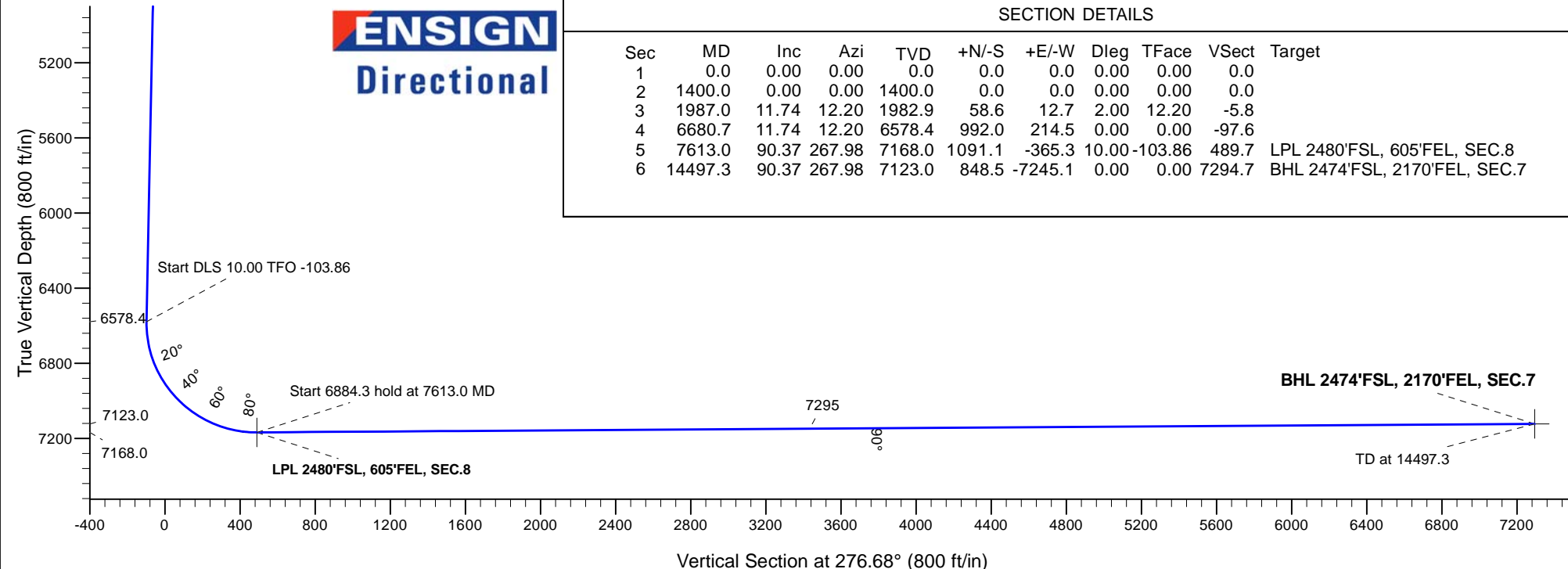
## ANNOTATIONS

TVD	MD	Annotation
1400.0	1400.0	KOP - Start Build 2.00
1982.9	1987.0	Start 4693.7 hold at 1987.0 MD
6578.4	6680.7	Start DLS 10.00 TFO -103.86
7168.0	7613.0	Start 6884.3 hold at 7613.0 MD
7123.0	14497.3	TD at 14497.3



## SECTION DETAILS

Sec	MD	Inc	Azi	TVD	+N/-S	+E/-W	Dleg	TFace	VSec	Target
1	0.0	0.00	0.00	0.0	0.0	0.0	0.00	0.00	0.0	
2	1400.0	0.00	0.00	1400.0	0.0	0.0	0.00	0.00	0.0	
3	1987.0	11.74	12.20	1982.9	58.6	12.7	2.00	12.20	-5.8	
4	6680.7	11.74	12.20	6578.4	992.0	214.5	0.00	0.00	-97.6	
5	7613.0	90.37	267.98	7168.0	1091.1	-365.3	10.00	-103.86	489.7	LPL 2480'FSL, 605'FEL, SEC.8
6	14497.3	90.37	267.98	7123.0	848.5	-7245.1	0.00	0.00	7294.7	BHL 2474'FSL, 2170'FEL, SEC.7





## **Bayswater Exploration & Production, LLC**

**SEC.8-T6N-R66W**

**Booth 8-L Pad Sec.8-T6N-R66W**

**Booth M-8-7HN**

**Wellbore #1**

**Plan: Plan #1 (5-03-17)**

## **Standard Planning Report**

**15 May, 2017**



**BAYSWATER**  
**EXPLORATION & PRODUCTION, LLC**

<b>Database:</b>	US_EDM	<b>Local Co-ordinate Reference:</b>	Well Booth M-8-7HN
<b>Company:</b>	Bayswater Exploration & Production, LLC	<b>TVD Reference:</b>	WELL @ 4831.0ft (RKB - 23')
<b>Project:</b>	SEC.8-T6N-R66W	<b>MD Reference:</b>	WELL @ 4831.0ft (RKB - 23')
<b>Site:</b>	Booth 8-L Pad Sec.8-T6N-R66W	<b>North Reference:</b>	True
<b>Well:</b>	Booth M-8-7HN	<b>Survey Calculation Method:</b>	Minimum Curvature
<b>Wellbore:</b>	Wellbore #1		
<b>Design:</b>	Plan #1 (5-03-17)		

<b>Project</b>	SEC.8-T6N-R66W, Weld County, Colorado		
<b>Map System:</b>	US State Plane 1983	<b>System Datum:</b>	Mean Sea Level
<b>Geo Datum:</b>	North American Datum 1983		Using Well Reference Point
<b>Map Zone:</b>	Colorado Northern Zone		Using geodetic scale factor

Site		Booth 8-L Pad Sec.8-T6N-R66W			
Site Position:		Northing:	1,425,653.29 usft	Latitude:	40.499670
From:	Lat/Long	Easting:	3,196,515.96 usft	Longitude:	-104.793357
Position Uncertainty:	0.0 ft	Slot Radius:	13-3/16 "	Grid Convergence:	0.46

Well	Booth M-8-7HN					
Well Position	+N/-S	-180.0 ft	Northing:	1,425,473.35 usft	Latitude:	40.499176
	+E/-W	2.8 ft	Easting:	3,196,520.18 usft	Longitude:	-104.793347
Position Uncertainty		0.0 ft	Wellhead Elevation:	0.0 ft	Ground Level:	4,808.0 ft

<b>Wellbore</b>	Wellbore #1				
<b>Magnetics</b>	<b>Model Name</b>	<b>Sample Date</b>	<b>Declination (°)</b>	<b>Dip Angle (°)</b>	<b>Field Strength (nT)</b>
	IGRF2010	5/15/2017	8.09	66.92	52,557

<b>Design</b>	Plan #1 (5-03-17)			
<b>Audit Notes:</b>				
<b>Version:</b>	<b>Phase:</b>	PROTOTYPE	<b>Tie On Depth:</b>	0.0
<b>Vertical Section:</b>	<b>Depth From (TVD)</b>	<b>+N/-S</b>	<b>+E/-W</b>	<b>Direction</b>
	(ft)	(ft)	(ft)	(°)
	0.0	0.0	0.0	276.68

<b>Plan Sections</b>										
Measured Depth (ft)	Inclination (°)	Azimuth (°)	Vertical Depth (ft)	+N/-S (ft)	+E/-W (ft)	Dogleg Rate (°/100usft)	Build Rate (°/100usft)	Turn Rate (°/100usft)	TFO (°)	Target
0.0	0.00	0.00	0.0	0.0	0.0	0.00	0.00	0.00	0.00	
1,400.0	0.00	0.00	1,400.0	0.0	0.0	0.00	0.00	0.00	0.00	
1,987.0	11.74	12.20	1,982.9	58.6	12.7	2.00	2.00	0.00	12.20	
6,680.7	11.74	12.20	6,578.4	992.0	214.5	0.00	0.00	0.00	0.00	
7,613.0	90.37	267.98	7,168.0	1,091.1	-365.3	10.00	8.43	-11.18	-103.86	LPL 2480'FSL, 605'FE
14,497.3	90.37	267.98	7,123.0	848.5	-7,245.1	0.00	0.00	0.00	0.00	BHL 2474'FSL, 2170'I

Database:	US_EDM	Local Co-ordinate Reference:	Well Booth M-8-7HN
Company:	Bayswater Exploration & Production, LLC	TVD Reference:	WELL @ 4831.0ft (RKB - 23')
Project:	SEC.8-T6N-R66W	MD Reference:	WELL @ 4831.0ft (RKB - 23')
Site:	Booth 8-L Pad Sec.8-T6N-R66W	North Reference:	True
Well:	Booth M-8-7HN	Survey Calculation Method:	Minimum Curvature
Wellbore:	Wellbore #1		
Design:	Plan #1 (5-03-17)		

Planned Survey									
Measured Depth (ft)	Inclination (°)	Azimuth (°)	Vertical Depth (ft)	+N/-S (ft)	+E/-W (ft)	Vertical Section (ft)	Dogleg Rate (°/100usft)	Build Rate (°/100usft)	Turn Rate (°/100usft)
0.0	0.00	0.00	0.0	0.0	0.0	0.0	0.00	0.00	0.00
100.0	0.00	0.00	100.0	0.0	0.0	0.0	0.00	0.00	0.00
200.0	0.00	0.00	200.0	0.0	0.0	0.0	0.00	0.00	0.00
300.0	0.00	0.00	300.0	0.0	0.0	0.0	0.00	0.00	0.00
400.0	0.00	0.00	400.0	0.0	0.0	0.0	0.00	0.00	0.00
500.0	0.00	0.00	500.0	0.0	0.0	0.0	0.00	0.00	0.00
600.0	0.00	0.00	600.0	0.0	0.0	0.0	0.00	0.00	0.00
700.0	0.00	0.00	700.0	0.0	0.0	0.0	0.00	0.00	0.00
800.0	0.00	0.00	800.0	0.0	0.0	0.0	0.00	0.00	0.00
900.0	0.00	0.00	900.0	0.0	0.0	0.0	0.00	0.00	0.00
1,000.0	0.00	0.00	1,000.0	0.0	0.0	0.0	0.00	0.00	0.00
1,100.0	0.00	0.00	1,100.0	0.0	0.0	0.0	0.00	0.00	0.00
1,200.0	0.00	0.00	1,200.0	0.0	0.0	0.0	0.00	0.00	0.00
1,300.0	0.00	0.00	1,300.0	0.0	0.0	0.0	0.00	0.00	0.00
1,400.0	0.00	0.00	1,400.0	0.0	0.0	0.0	0.00	0.00	0.00
KOP - Start Build 2.00									
1,500.0	2.00	12.20	1,500.0	1.7	0.4	-0.2	2.00	2.00	0.00
1,600.0	4.00	12.20	1,599.8	6.8	1.5	-0.7	2.00	2.00	0.00
1,700.0	6.00	12.20	1,699.5	15.3	3.3	-1.5	2.00	2.00	0.00
1,800.0	8.00	12.20	1,798.7	27.3	5.9	-2.7	2.00	2.00	0.00
1,900.0	10.00	12.20	1,897.5	42.5	9.2	-4.2	2.00	2.00	0.00
1,987.0	11.74	12.20	1,982.9	58.6	12.7	-5.8	2.00	2.00	0.00
Start 4693.7 hold at 1987.0 MD									
2,000.0	11.74	12.20	1,995.6	61.2	13.2	-6.0	0.00	0.00	0.00
2,100.0	11.74	12.20	2,093.5	81.0	17.5	-8.0	0.00	0.00	0.00
2,200.0	11.74	12.20	2,191.4	100.9	21.8	-9.9	0.00	0.00	0.00
2,300.0	11.74	12.20	2,289.4	120.8	26.1	-11.9	0.00	0.00	0.00
2,400.0	11.74	12.20	2,387.3	140.7	30.4	-13.8	0.00	0.00	0.00
2,500.0	11.74	12.20	2,485.2	160.6	34.7	-15.8	0.00	0.00	0.00
2,600.0	11.74	12.20	2,583.1	180.5	39.0	-17.8	0.00	0.00	0.00
2,700.0	11.74	12.20	2,681.0	200.4	43.3	-19.7	0.00	0.00	0.00
2,800.0	11.74	12.20	2,778.9	220.2	47.6	-21.7	0.00	0.00	0.00
2,900.0	11.74	12.20	2,876.8	240.1	51.9	-23.6	0.00	0.00	0.00
3,000.0	11.74	12.20	2,974.7	260.0	56.2	-25.6	0.00	0.00	0.00
3,100.0	11.74	12.20	3,072.6	279.9	60.5	-27.6	0.00	0.00	0.00
3,200.0	11.74	12.20	3,170.5	299.8	64.8	-29.5	0.00	0.00	0.00
3,300.0	11.74	12.20	3,268.4	319.7	69.1	-31.5	0.00	0.00	0.00
3,400.0	11.74	12.20	3,366.3	339.6	73.4	-33.4	0.00	0.00	0.00
3,500.0	11.74	12.20	3,464.3	359.4	77.7	-35.4	0.00	0.00	0.00
3,600.0	11.74	12.20	3,562.2	379.3	82.0	-37.3	0.00	0.00	0.00
3,700.0	11.74	12.20	3,660.1	399.2	86.3	-39.3	0.00	0.00	0.00
3,800.0	11.74	12.20	3,758.0	419.1	90.6	-41.3	0.00	0.00	0.00
3,900.0	11.74	12.20	3,855.9	439.0	94.9	-43.2	0.00	0.00	0.00
4,000.0	11.74	12.20	3,953.8	458.9	99.2	-45.2	0.00	0.00	0.00
4,100.0	11.74	12.20	4,051.7	478.8	103.5	-47.1	0.00	0.00	0.00
4,200.0	11.74	12.20	4,149.6	498.6	107.8	-49.1	0.00	0.00	0.00
4,300.0	11.74	12.20	4,247.5	518.5	112.1	-51.0	0.00	0.00	0.00
4,400.0	11.74	12.20	4,345.4	538.4	116.4	-53.0	0.00	0.00	0.00
4,500.0	11.74	12.20	4,443.3	558.3	120.7	-55.0	0.00	0.00	0.00
4,600.0	11.74	12.20	4,541.2	578.2	125.0	-56.9	0.00	0.00	0.00
4,700.0	11.74	12.20	4,639.2	598.1	129.3	-58.9	0.00	0.00	0.00
4,800.0	11.74	12.20	4,737.1	618.0	133.6	-60.8	0.00	0.00	0.00
4,900.0	11.74	12.20	4,835.0	637.9	137.9	-62.8	0.00	0.00	0.00
5,000.0	11.74	12.20	4,932.9	657.7	142.2	-64.7	0.00	0.00	0.00

Database:	US_EDM	Local Co-ordinate Reference:	Well Booth M-8-7HN
Company:	Bayswater Exploration & Production, LLC	TVD Reference:	WELL @ 4831.0ft (RKB - 23')
Project:	SEC.8-T6N-R66W	MD Reference:	WELL @ 4831.0ft (RKB - 23')
Site:	Booth 8-L Pad Sec.8-T6N-R66W	North Reference:	True
Well:	Booth M-8-7HN	Survey Calculation Method:	Minimum Curvature
Wellbore:	Wellbore #1		
Design:	Plan #1 (5-03-17)		

Planned Survey									
Measured Depth (ft)	Inclination (°)	Azimuth (°)	Vertical Depth (ft)	+N/-S (ft)	+E/-W (ft)	Vertical Section (ft)	Dogleg Rate (°/100usft)	Build Rate (°/100usft)	Turn Rate (°/100usft)
5,100.0	11.74	12.20	5,030.8	677.6	146.5	-66.7	0.00	0.00	0.00
5,200.0	11.74	12.20	5,128.7	697.5	150.8	-68.7	0.00	0.00	0.00
5,300.0	11.74	12.20	5,226.6	717.4	155.1	-70.6	0.00	0.00	0.00
5,400.0	11.74	12.20	5,324.5	737.3	159.4	-72.6	0.00	0.00	0.00
5,500.0	11.74	12.20	5,422.4	757.2	163.7	-74.5	0.00	0.00	0.00
5,600.0	11.74	12.20	5,520.3	777.1	168.0	-76.5	0.00	0.00	0.00
5,700.0	11.74	12.20	5,618.2	796.9	172.3	-78.4	0.00	0.00	0.00
5,800.0	11.74	12.20	5,716.2	816.8	176.6	-80.4	0.00	0.00	0.00
5,900.0	11.74	12.20	5,814.1	836.7	180.9	-82.4	0.00	0.00	0.00
6,000.0	11.74	12.20	5,912.0	856.6	185.2	-84.3	0.00	0.00	0.00
6,100.0	11.74	12.20	6,009.9	876.5	189.5	-86.3	0.00	0.00	0.00
6,200.0	11.74	12.20	6,107.8	896.4	193.8	-88.2	0.00	0.00	0.00
6,300.0	11.74	12.20	6,205.7	916.3	198.1	-90.2	0.00	0.00	0.00
6,400.0	11.74	12.20	6,303.6	936.1	202.4	-92.1	0.00	0.00	0.00
6,500.0	11.74	12.20	6,401.5	956.0	206.7	-94.1	0.00	0.00	0.00
6,600.0	11.74	12.20	6,499.4	975.9	211.0	-96.1	0.00	0.00	0.00
6,680.7	11.74	12.20	6,578.4	992.0	214.5	-97.6	0.00	0.00	0.00
Start DLS 10.00 TFO -103.86									
6,700.0	11.43	2.70	6,597.3	995.8	215.0	-97.7	10.00	-1.61	-49.21
6,800.0	14.53	319.08	6,695.0	1,015.2	207.2	-87.7	10.00	3.10	-43.62
6,900.0	22.11	297.78	6,790.0	1,033.5	182.3	-60.8	10.00	7.58	-21.29
7,000.0	31.05	287.61	6,879.3	1,050.1	140.9	-17.8	10.00	8.94	-10.17
7,100.0	40.45	281.73	6,960.4	1,064.6	84.4	40.0	10.00	9.40	-5.88
7,200.0	50.05	277.77	7,030.8	1,076.4	14.5	110.8	10.00	9.60	-3.95
7,300.0	59.76	274.80	7,088.2	1,085.2	-66.7	192.5	10.00	9.70	-2.97
7,400.0	69.51	272.37	7,131.0	1,090.8	-156.8	282.6	10.00	9.76	-2.43
7,500.0	79.30	270.24	7,157.8	1,092.9	-252.9	378.4	10.00	9.79	-2.14
7,600.0	89.10	268.24	7,167.9	1,091.6	-352.3	476.9	10.00	9.80	-2.00
7,613.0	90.37	267.98	7,168.0	1,091.1	-365.3	489.7	10.00	9.80	-1.98
Start 6884.3 hold at 7613.0 MD									
7,700.0	90.37	267.98	7,167.4	1,088.1	-452.2	575.7	0.00	0.00	0.00
7,800.0	90.37	267.98	7,166.8	1,084.5	-552.2	674.6	0.00	0.00	0.00
7,900.0	90.37	267.98	7,166.1	1,081.0	-652.1	773.4	0.00	0.00	0.00
8,000.0	90.37	267.98	7,165.5	1,077.5	-752.0	872.3	0.00	0.00	0.00
8,100.0	90.37	267.98	7,164.8	1,074.0	-852.0	971.1	0.00	0.00	0.00
8,200.0	90.37	267.98	7,164.2	1,070.4	-951.9	1,070.0	0.00	0.00	0.00
8,300.0	90.37	267.98	7,163.5	1,066.9	-1,051.9	1,168.8	0.00	0.00	0.00
8,400.0	90.37	267.98	7,162.9	1,063.4	-1,151.8	1,267.7	0.00	0.00	0.00
8,500.0	90.37	267.98	7,162.2	1,059.9	-1,251.7	1,366.5	0.00	0.00	0.00
8,600.0	90.37	267.98	7,161.5	1,056.3	-1,351.7	1,465.4	0.00	0.00	0.00
8,700.0	90.37	267.98	7,160.9	1,052.8	-1,451.6	1,564.2	0.00	0.00	0.00
8,800.0	90.37	267.98	7,160.2	1,049.3	-1,551.5	1,663.0	0.00	0.00	0.00
8,900.0	90.37	267.98	7,159.6	1,045.8	-1,651.5	1,761.9	0.00	0.00	0.00
9,000.0	90.37	267.98	7,158.9	1,042.2	-1,751.4	1,860.7	0.00	0.00	0.00
9,100.0	90.37	267.98	7,158.3	1,038.7	-1,851.3	1,959.6	0.00	0.00	0.00
9,200.0	90.37	267.98	7,157.6	1,035.2	-1,951.3	2,058.4	0.00	0.00	0.00
9,300.0	90.37	267.98	7,157.0	1,031.7	-2,051.2	2,157.3	0.00	0.00	0.00
9,400.0	90.37	267.98	7,156.3	1,028.1	-2,151.1	2,256.1	0.00	0.00	0.00
9,500.0	90.37	267.98	7,155.7	1,024.6	-2,251.1	2,355.0	0.00	0.00	0.00
9,600.0	90.37	267.98	7,155.0	1,021.1	-2,351.0	2,453.8	0.00	0.00	0.00
9,700.0	90.37	267.98	7,154.4	1,017.6	-2,451.0	2,552.7	0.00	0.00	0.00
9,800.0	90.37	267.98	7,153.7	1,014.0	-2,550.9	2,651.5	0.00	0.00	0.00
9,900.0	90.37	267.98	7,153.1	1,010.5	-2,650.8	2,750.4	0.00	0.00	0.00
10,000.0	90.37	267.98	7,152.4	1,007.0	-2,750.8	2,849.2	0.00	0.00	0.00

<b>Database:</b>	US_EDM	<b>Local Co-ordinate Reference:</b>	Well Booth M-8-7HN
<b>Company:</b>	Bayswater Exploration & Production, LLC	<b>TVD Reference:</b>	WELL @ 4831.0ft (RKB - 23')
<b>Project:</b>	SEC.8-T6N-R66W	<b>MD Reference:</b>	WELL @ 4831.0ft (RKB - 23')
<b>Site:</b>	Booth 8-L Pad Sec.8-T6N-R66W	<b>North Reference:</b>	True
<b>Well:</b>	Booth M-8-7HN	<b>Survey Calculation Method:</b>	Minimum Curvature
<b>Wellbore:</b>	Wellbore #1		
<b>Design:</b>	Plan #1 (5-03-17)		

Planned Survey									
Measured Depth (ft)	Inclination (°)	Azimuth (°)	Vertical Depth (ft)	+N/-S (ft)	+E/-W (ft)	Vertical Section (ft)	Dogleg Rate (°/100usft)	Build Rate (°/100usft)	Turn Rate (°/100usft)
10,100.0	90.37	267.98	7,151.7	1,003.5	-2,850.7	2,948.1	0.00	0.00	0.00
10,200.0	90.37	267.98	7,151.1	999.9	-2,950.6	3,046.9	0.00	0.00	0.00
10,300.0	90.37	267.98	7,150.4	996.4	-3,050.6	3,145.8	0.00	0.00	0.00
10,400.0	90.37	267.98	7,149.8	992.9	-3,150.5	3,244.6	0.00	0.00	0.00
10,500.0	90.37	267.98	7,149.1	989.4	-3,250.4	3,343.5	0.00	0.00	0.00
10,600.0	90.37	267.98	7,148.5	985.8	-3,350.4	3,442.3	0.00	0.00	0.00
10,700.0	90.37	267.98	7,147.8	982.3	-3,450.3	3,541.1	0.00	0.00	0.00
10,800.0	90.37	267.98	7,147.2	978.8	-3,550.2	3,640.0	0.00	0.00	0.00
10,900.0	90.37	267.98	7,146.5	975.3	-3,650.2	3,738.8	0.00	0.00	0.00
11,000.0	90.37	267.98	7,145.9	971.7	-3,750.1	3,837.7	0.00	0.00	0.00
11,100.0	90.37	267.98	7,145.2	968.2	-3,850.1	3,936.5	0.00	0.00	0.00
11,200.0	90.37	267.98	7,144.6	964.7	-3,950.0	4,035.4	0.00	0.00	0.00
11,300.0	90.37	267.98	7,143.9	961.2	-4,049.9	4,134.2	0.00	0.00	0.00
11,400.0	90.37	267.98	7,143.2	957.7	-4,149.9	4,233.1	0.00	0.00	0.00
11,500.0	90.37	267.98	7,142.6	954.1	-4,249.8	4,331.9	0.00	0.00	0.00
11,600.0	90.37	267.98	7,141.9	950.6	-4,349.7	4,430.8	0.00	0.00	0.00
11,700.0	90.37	267.98	7,141.3	947.1	-4,449.7	4,529.6	0.00	0.00	0.00
11,800.0	90.37	267.98	7,140.6	943.6	-4,549.6	4,628.5	0.00	0.00	0.00
11,900.0	90.37	267.98	7,140.0	940.0	-4,649.5	4,727.3	0.00	0.00	0.00
12,000.0	90.37	267.98	7,139.3	936.5	-4,749.5	4,826.2	0.00	0.00	0.00
12,100.0	90.37	267.98	7,138.7	933.0	-4,849.4	4,925.0	0.00	0.00	0.00
12,200.0	90.37	267.98	7,138.0	929.5	-4,949.3	5,023.9	0.00	0.00	0.00
12,300.0	90.37	267.98	7,137.4	925.9	-5,049.3	5,122.7	0.00	0.00	0.00
12,400.0	90.37	267.98	7,136.7	922.4	-5,149.2	5,221.6	0.00	0.00	0.00
12,500.0	90.37	267.98	7,136.1	918.9	-5,249.2	5,320.4	0.00	0.00	0.00
12,600.0	90.37	267.98	7,135.4	915.4	-5,349.1	5,419.2	0.00	0.00	0.00
12,700.0	90.37	267.98	7,134.7	911.8	-5,449.0	5,518.1	0.00	0.00	0.00
12,800.0	90.37	267.98	7,134.1	908.3	-5,549.0	5,616.9	0.00	0.00	0.00
12,900.0	90.37	267.98	7,133.4	904.8	-5,648.9	5,715.8	0.00	0.00	0.00
13,000.0	90.37	267.98	7,132.8	901.3	-5,748.8	5,814.6	0.00	0.00	0.00
13,100.0	90.37	267.98	7,132.1	897.7	-5,848.8	5,913.5	0.00	0.00	0.00
13,200.0	90.37	267.98	7,131.5	894.2	-5,948.7	6,012.3	0.00	0.00	0.00
13,300.0	90.37	267.98	7,130.8	890.7	-6,048.6	6,111.2	0.00	0.00	0.00
13,400.0	90.37	267.98	7,130.2	887.2	-6,148.6	6,210.0	0.00	0.00	0.00
13,500.0	90.37	267.98	7,129.5	883.6	-6,248.5	6,308.9	0.00	0.00	0.00
13,600.0	90.37	267.98	7,128.9	880.1	-6,348.4	6,407.7	0.00	0.00	0.00
13,700.0	90.37	267.98	7,128.2	876.6	-6,448.4	6,506.6	0.00	0.00	0.00
13,800.0	90.37	267.98	7,127.6	873.1	-6,548.3	6,605.4	0.00	0.00	0.00
13,900.0	90.37	267.98	7,126.9	869.5	-6,648.3	6,704.3	0.00	0.00	0.00
14,000.0	90.37	267.98	7,126.3	866.0	-6,748.2	6,803.1	0.00	0.00	0.00
14,100.0	90.37	267.98	7,125.6	862.5	-6,848.1	6,902.0	0.00	0.00	0.00
14,200.0	90.37	267.98	7,124.9	859.0	-6,948.1	7,000.8	0.00	0.00	0.00
14,300.0	90.37	267.98	7,124.3	855.4	-7,048.0	7,099.7	0.00	0.00	0.00
14,400.0	90.37	267.98	7,123.6	851.9	-7,147.9	7,198.5	0.00	0.00	0.00
14,497.3	90.37	267.98	7,123.0	848.5	-7,245.1	7,294.7	0.00	0.00	0.00
TD at 14497.3									

<b>Database:</b>	US_EDM	<b>Local Co-ordinate Reference:</b>	Well Booth M-8-7HN
<b>Company:</b>	Bayswater Exploration & Production, LLC	<b>TVD Reference:</b>	WELL @ 4831.0ft (RKB - 23')
<b>Project:</b>	SEC.8-T6N-R66W	<b>MD Reference:</b>	WELL @ 4831.0ft (RKB - 23')
<b>Site:</b>	Booth 8-L Pad Sec.8-T6N-R66W	<b>North Reference:</b>	True
<b>Well:</b>	Booth M-8-7HN	<b>Survey Calculation Method:</b>	Minimum Curvature
<b>Wellbore:</b>	Wellbore #1		
<b>Design:</b>	Plan #1 (5-03-17)		

Design Targets									
Target Name - hit/miss target - Shape	Dip Angle (°)	Dip Dir. (°)	TVD (ft)	+N/-S (ft)	+E/-W (ft)	Northing (usft)	Easting (usft)	Latitude	Longitude
SHL 1381'FSL, 249'FEL - plan hits target center - Point	0.00	0.00	1.0	0.0	0.0	1,425,473.35	3,196,520.18	40.499176	-104.793347
BHL 2474'FSL, 2170'FEL - plan hits target center - Point	0.00	0.00	7,123.0	848.5	-7,245.1	1,426,264.03	3,189,268.76	40.501502	-104.819399
LPL 2480'FSL, 605'FEL, - plan hits target center - Point	0.00	0.00	7,168.0	1,091.1	-365.3	1,426,561.50	3,196,146.21	40.502171	-104.794661

Plan Annotations				
Measured Depth (ft)	Vertical Depth (ft)	Local Coordinates		Comment
		+N/-S (ft)	+E/-W (ft)	
1,400.0	1,400.0	0.0	0.0	KOP - Start Build 2.00
1,987.0	1,982.9	58.6	12.7	Start 4693.7 hold at 1987.0 MD
6,680.7	6,578.4	992.0	214.5	Start DLS 10.00 TFO -103.86
7,613.0	7,168.0	1,091.1	-365.3	Start 6884.3 hold at 7613.0 MD
14,497.3	7,123.0	848.5	-7,245.1	TD at 14497.3