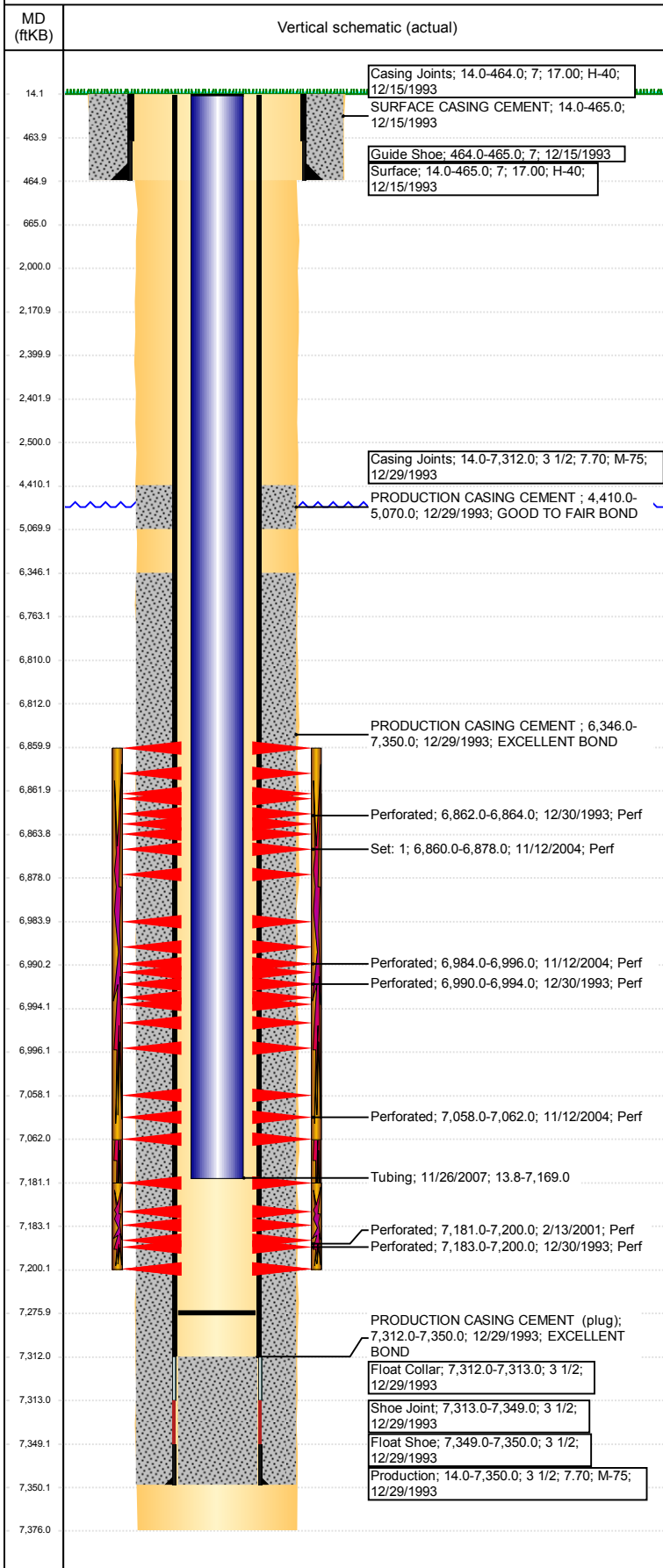


Well Name: KAMMERZELL 06-08F

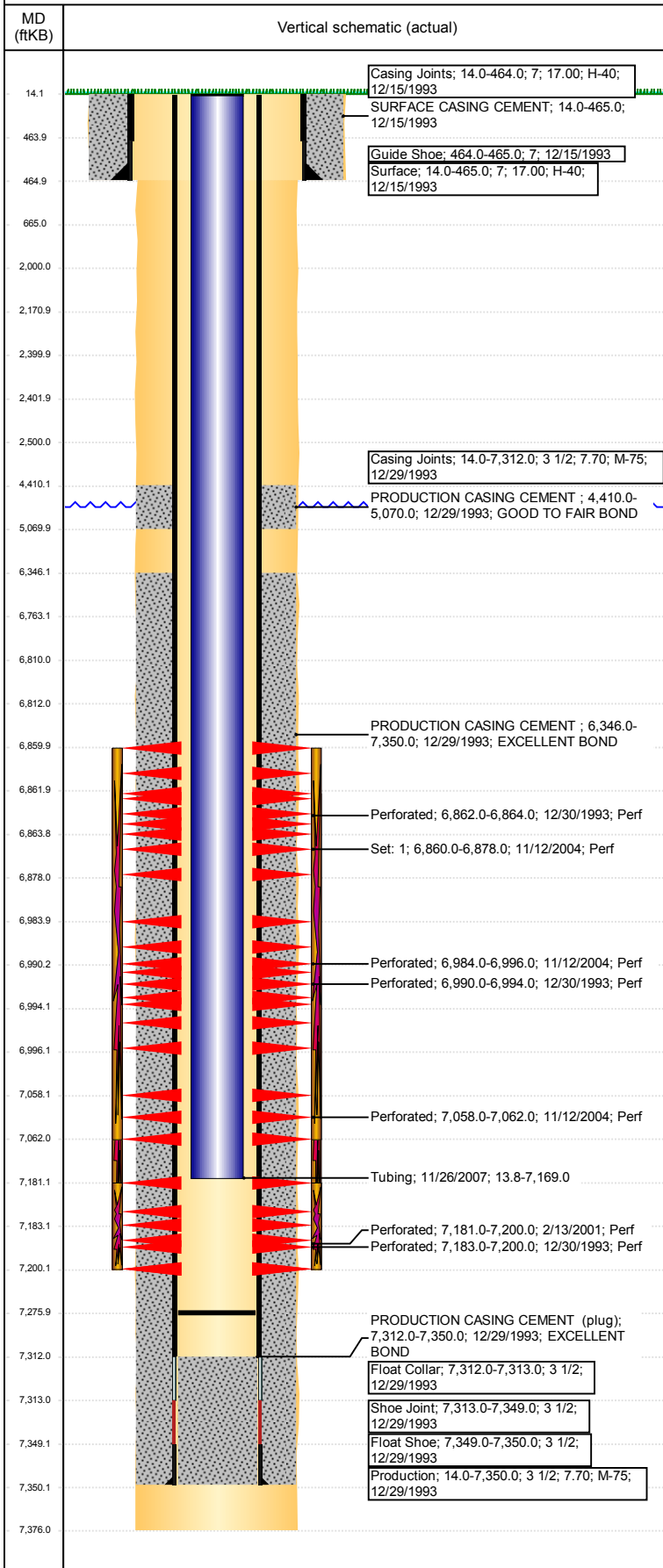
VERTICAL - ORIGINAL HOLE, 8/18/2017 11:41:30 AM



Well Header						
API 05-123-17607	Business Unit DJ BASIN		District 15		Well Config VERTICAL	
Original KB Elevation (ft) 4,752	KB - GL / MSL (ftKB) 14.00		Spud Date 12/14/1993		P & A Date	
Comment WHILE DRILLING @ 1580' DRILL BIT HAD PARTED; CEMENTED 6.25" HOLE FROM 1080' TO 1580' W/ 130 SX. D/O CEMENT AND CONTINUED TO DRILL TO TD. KOP AT 1300' ACCORDING TO DRILL REPORTS BUT NO INDICATION THAT WELL IS DEVIATED.						
Directions To Well						
Congressional Location						
Quarter 3 SE	Quarter 4 NE	Section 6	Township 4	Twnshp N/S Dir N	Range 66	Range E/W Dir W
Bottom Hole Location						
North-South Distance (ft)		From N or S Line		East-West Distance (ft)		From E or W Line
Plug Back Total Depths						
Date	Depth (ftKB)	Method		Com		
12/28/1993	7,312.0	CASING TALLY		TOP OF LATCH DOWN BAFFLE		
12/31/1993	7,288.0	CASED HOLE LOG		CBL DEPTH LOGGER		
11/26/2007	7,276.0	TAG		MOST RECENT TAG FILL		
Wellbore Sections						
Section Des		Size (in)		Act Top, MD (ftKB)		Act Btm, MD (ftKB)
Surface		9 7/8		14		465
Production		6 1/4		465		7,376
Zone Statuses						
Zone Name	Status Date	Status	Fluid Type	Job	Prod Method	
NIOBRARA	1/8/1994	PR		DRILLING/CO...		
NIOBRARA	11/16/2004	PR		RE-FRAC, 11/4...		
CODELL	1/8/1994	PR		DRILLING/CO...		
CODELL	2/19/2001	PR		RE-FRAC, 2/8/...		
CODELL	11/16/2004	SI		RE-FRAC, 11/4...		
CODELL	1/5/2005	PR		COMMINGLE...		
CODELL	1/26/2007	PR		TRI-FRAC, 11/...		
Casing Strings						
Surface, 465.0ftKB						
Casing Description Surface	Run Date 12/15/1993	OD (in) 7	Wt/Len (l... 17.00	Grade H-40	Top, MD (ft... 14.0	MD (ftKB) 465.0
Production, 7,350.0ftKB						
Casing Description Production	Run Date 12/29/1993	OD (in) 3 1/2	Wt/Len (l... 7.70	Grade M-75	Top, MD (ft... 14.0	MD (ftKB) 7,350.0
Cement						
Description SURFACE CASING CEMENT				Top Depth (ftKB) 14.0	Bottom Depth (ftKB) 465.0	
Description PRODUCTION CASING CEMENT				Top Depth (ftKB) 4,410.0	Bottom Depth (ftKB) 5,070.0	
Description PRODUCTION CASING CEMENT				Top Depth (ftKB) 6,346.0	Bottom Depth (ftKB) 7,350.0	
Description Dump Bail				Top Depth (ftKB) 6,763.0	Bottom Depth (ftKB) 6,810.0	
Description Elective				Top Depth (ftKB) 2,171.0	Bottom Depth (ftKB) 2,400.0	
Description Elective				Top Depth (ftKB) 2,402.0	Bottom Depth (ftKB) 2,500.0	
Description Elective				Top Depth (ftKB) 2,000.0	Bottom Depth (ftKB) 2,500.0	
Description Shoe Plug				Top Depth (ftKB) 14.0	Bottom Depth (ftKB) 665.0	
Tubing Strings						
Tubing Description Tubing	Run Date 11/26/2007	String... 2 1/16	ID (in) 1.75	Wt (lb/ft) 3.25	Grade J-55	Len (ft) 7,155.20
Other In Hole						
Run Date	Des			OD (in)	Top (ftKB)	Btm (ftKB)
8/18/2017	Cast Iron Bridge Plug			3	6,810.0	6,812.0
8/18/2017	Cement Retainer			3	2,400.0	2,402.0
Logs						
Date	Type			Top, MD (ftKB)	Btm, MD (ftKB)	
12/27/1993	COMPENSATED DENSITY			2,550.0	7,361.0	

Well Name: KAMMERZELL 06-08F

VERTICAL - ORIGINAL HOLE, 8/18/2017 11:41:31 AM



Logs			
Date	Type	Top, MD (ftKB)	Btm, MD (ftKB)
12/27/1993	INDUCTION	465.0	7,361.0
12/31/1993	CBL/CCL/GR	4,098.0	7,284.0

Perforation Data					
Linked Zone	Bnch/St g	Sum of Entered Shot Total	Top (ftKB)	Btm (ftKB)	Date
NIOBRARA, ORIGINAL HOLE	A	108	6,860.00	6,878.00	11/12/2004
NIOBRARA, ORIGINAL HOLE	A	2	6,862.00	6,864.00	12/30/1993
NIOBRARA, ORIGINAL HOLE	B	72	6,984.00	6,996.00	11/12/2004
NIOBRARA, ORIGINAL HOLE	B	4	6,990.00	6,994.00	12/30/1993
NIOBRARA, ORIGINAL HOLE	C	24	7,058.00	7,062.00	11/12/2004
CODELL, ORIGINAL HOLE		72	7,181.00	7,200.00	2/13/2001
CODELL, ORIGINAL HOLE		9	7,183.00	7,200.00	12/30/1993
Total (Sum)		291			

Stimulation Intervals		
Start Date	Primary Job Type	
1/4/1994	DRILLING/COMPLETION - ORIGINAL	
Technical Result	Tech Result Details	Tech Result Note
Comment		
LIMITED ENTRY FRAC		
Start Date	Primary Job Type	
2/19/2001	RE-FRAC	
Technical Result	Tech Result Details	Tech Result Note
Comment		
Start Date	Primary Job Type	
11/15/2004	RE-FRAC	
Technical Result	Tech Result Details	Tech Result Note
Comment		
Start Date	Primary Job Type	
11/1/2007	TRI-FRAC	
Technical Result	Tech Result Details	Tech Result Note
Comment		