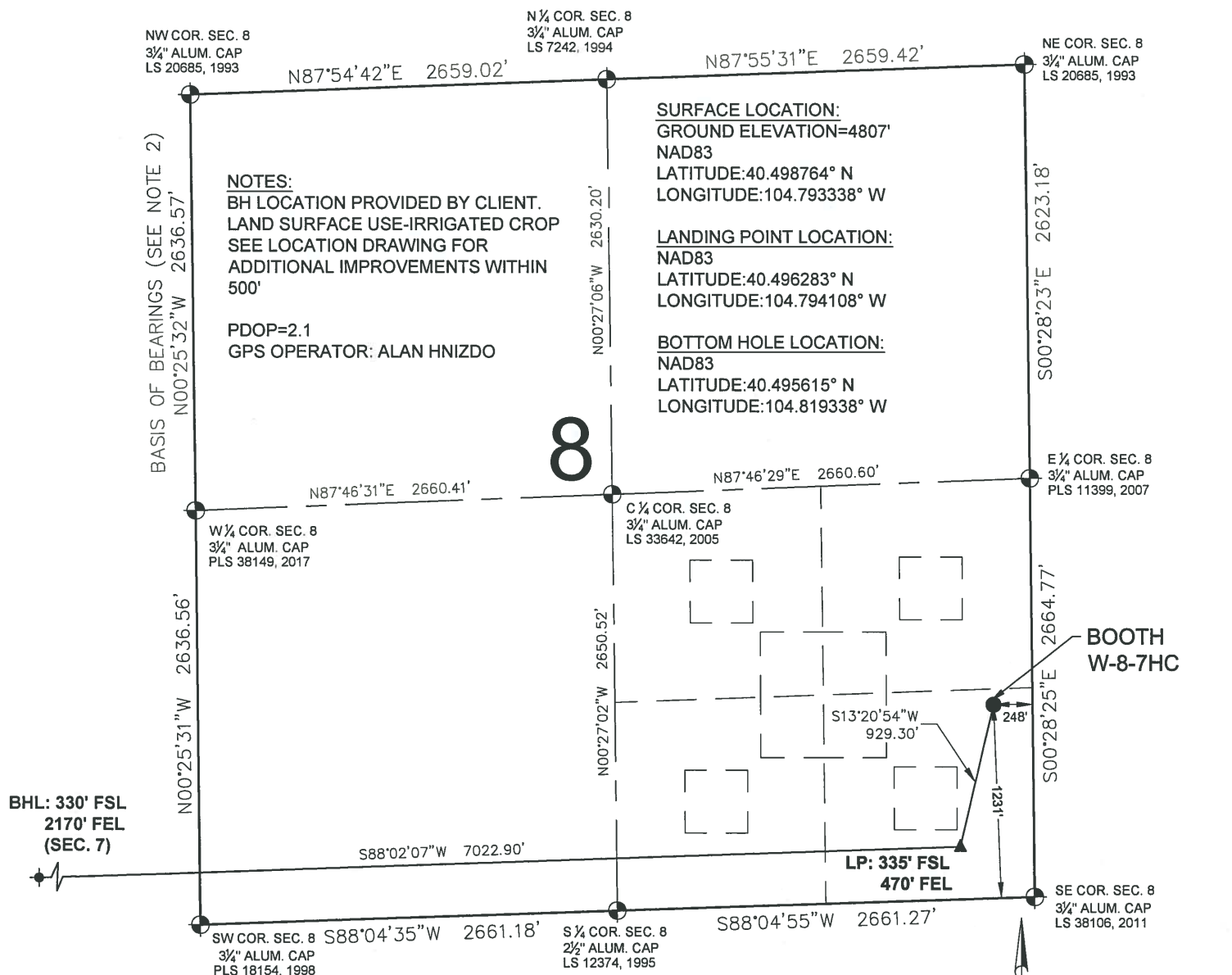


# BOOTH W-8-7HC WELL LOCATION CERTIFICATE



## WELL BOOTH W-8-7HC TO BE LOCATED 1231' FSL & 248' FEL

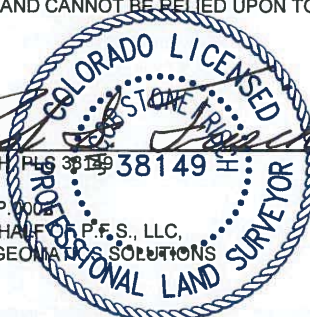
I, JACOB S. FRISCH, A LICENSED PROFESSIONAL LAND SURVEYOR IN THE STATE OF COLORADO DO HEREBY CERTIFY TO **BAYSWATER EXPLORATION & PRODUCTION, LLC**, THAT THE SURVEY AND WELL LOCATION CERTIFICATE SHOWN HEREON WERE DONE BY ME OR UNDER MY DIRECT SUPERVISION AND THAT THE DRAWING SHOWN HEREON ACCURATELY DEPICTS THE PROPOSED LOCATION OF THE WELL. THIS CERTIFICATE DOES NOT REPRESENT A LAND SURVEY PLAT OR IMPROVEMENT SURVEY PLAT AS DEFINED BY C.R.S. 38-51-102 AND CANNOT BE RELIED UPON TO DETERMINE OWNERSHIP.

JACOB S. FRISCH, PLS 38149

DATE: 04-21-17

JOB NO: B17.BEP.0008

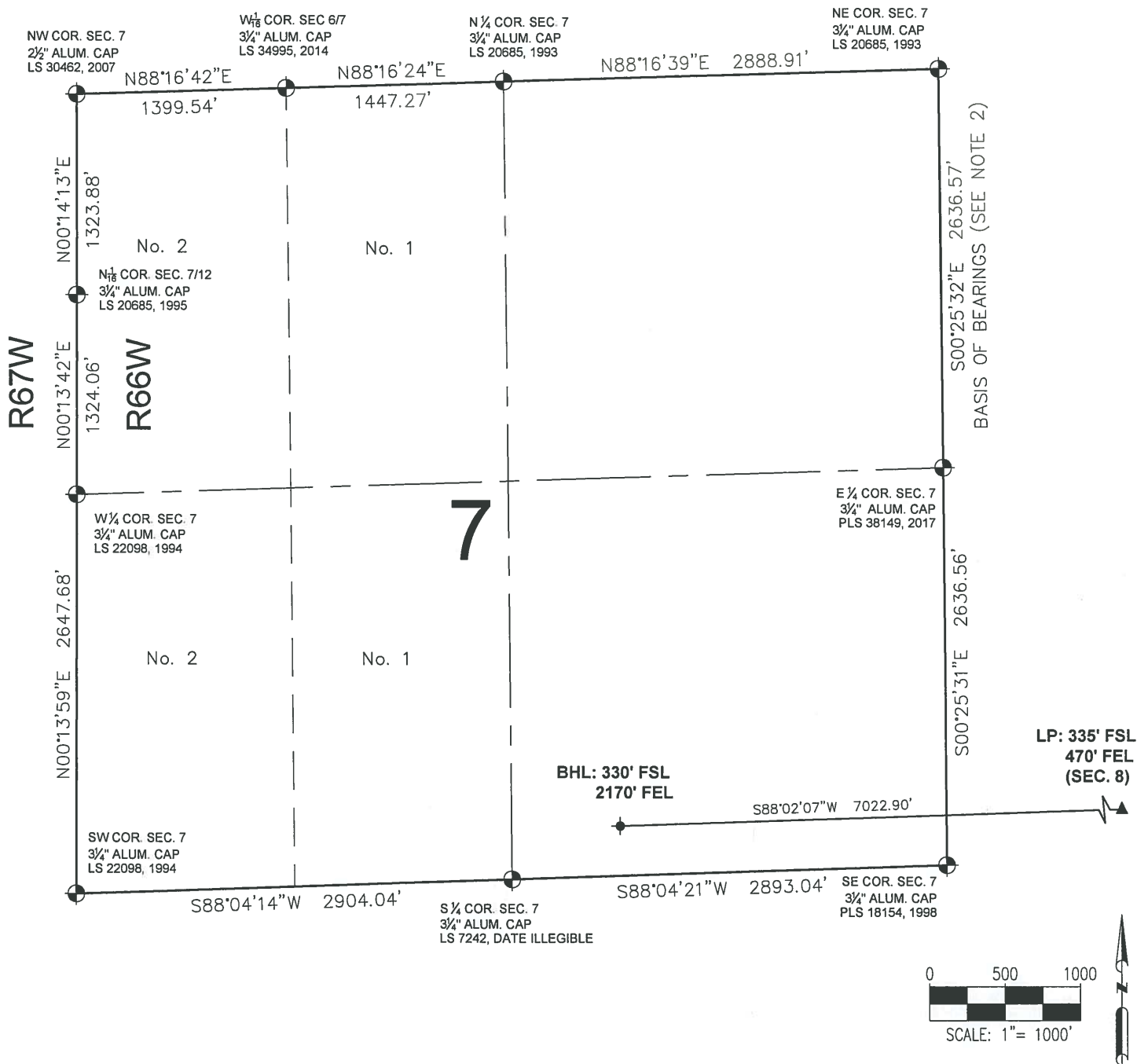
FOR AND ON BEHALF OF P.F.S., LLC,  
D.B.A. ASCENT GEOMATICS SOLUTIONS



SHEET 1 OF 2

<b>PREPARED BY:</b>  7535 Hilltop Circle Denver, CO 80221 (303) 928-7128 www.ascentgeomatics.com	<b>FIELD DATE:</b> 03-16-17 <b>DRAWING DATE:</b> 04-11-17 <b>BY:</b> TCP <b>CHECKED BY:</b> CSG	<b>WELL NAME:</b> BOOTH W-8-7HC <b>SURFACE LOCATION:</b> SE 1/4 SE 1/4 SEC. 8, T6N, R66W, 6TH P.M. WELD COUNTY, COLORADO	<b>PREPARED FOR:</b>  BAYSWATER EXPLORATION AND PRODUCTION, LLC
---	--	--	--

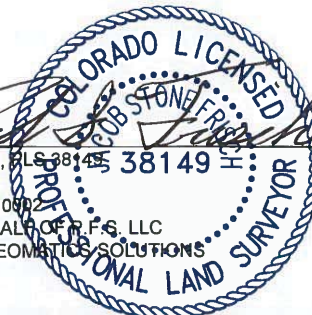
# BOOTH W-8-7HC WELL LOCATION CERTIFICATE



## LEGEND

- = EXISTING MONUMENT
- = CALCULATED POSITION
- = PROPOSED WELL
- ◆ = EXISTING WELL
- ◆ = BOTTOM HOLE
- ▲ = LANDING POINT
- LP = LANDING POINT
- BHL = BOTTOM HOLE LOCATION

JACOB S. FRISCH, PLS 38149  
DATE: 04-21-17  
JOB NO: B17.BEP.0002  
FOR AND ON BEHALF OF R.F.S. LLC  
D.B.A. ASCENT GEOMATICS SOLUTIONS



SHEET 2 OF 2

<b>PREPARED BY:</b>  7535 Willap Circle Denver, CO 80221 (303) 928-7128 www.ascentgeomatics.com	<b>FIELD DATE:</b> 03-16-17 <b>DRAWING DATE:</b> 04-11-17 <b>BY:</b> TCP <b>CHECKED BY:</b> CSG	<b>WELL NAME:</b> BOOTH W-8-7HC <b>SURFACE LOCATION:</b> SE 1/4 SE 1/4 SEC. 8, T6N, R66W, 6TH P.M. WELD COUNTY, COLORADO	<b>PREPARED FOR:</b>  <b>BAYSWATER</b> EXPLORATION AND PRODUCTION, LLC
--	--	--	---