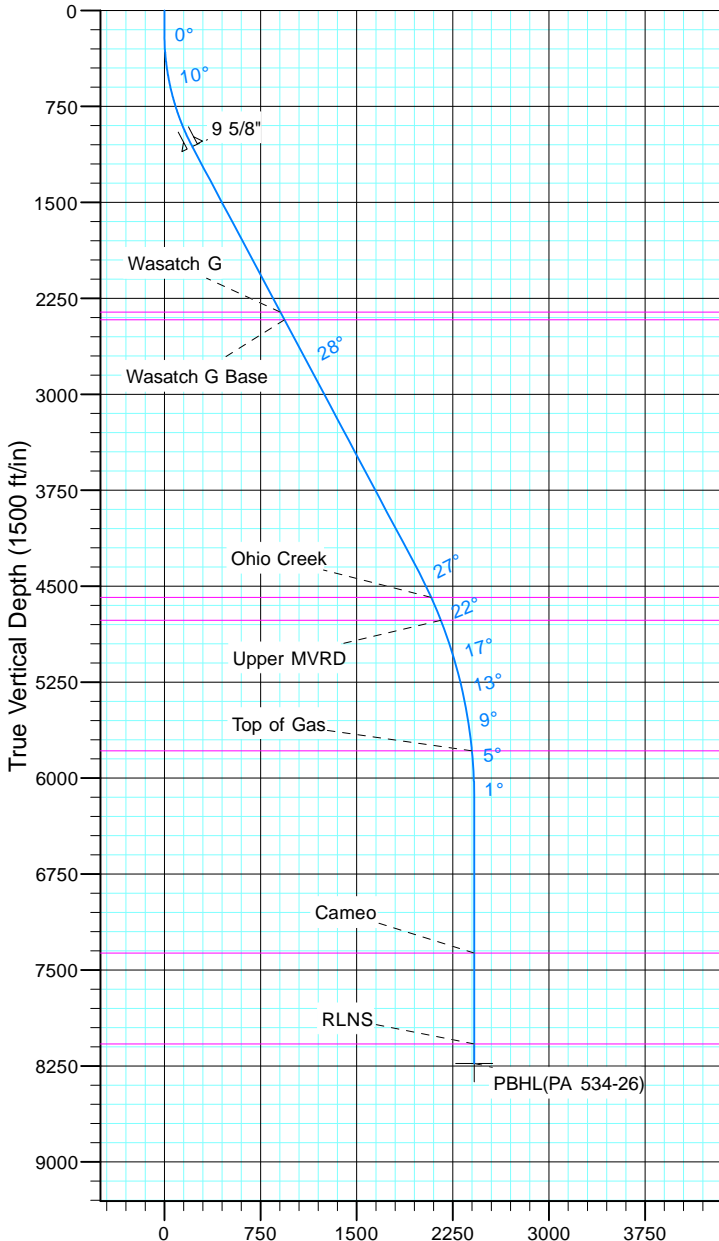


TEP Rocky Mountain LLC
Project: Garfield County, CO NAD83
Site: PA 23-26 Pad
Well: PA 534-26
Wellbore: OH
Design: Plan #1



Azimuths to True North
Magnetic North: 11.44°

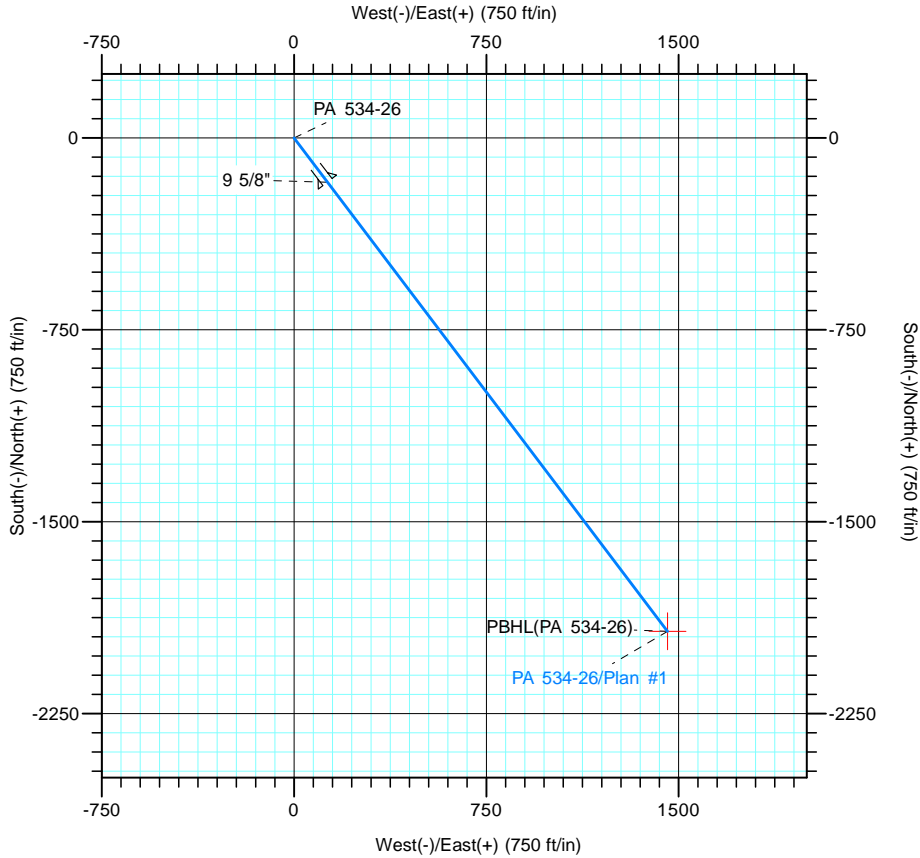
Magnetic Field
Strength: 53054.0snT
Dip Angle: 65.99°
Date: 12/31/2004
Model: IGRF2000



Vertical Section at 142.93° (1500 ft/in)

CASING DETAILS			
TVD	MD	Name	Size
1064.8	1100.0	9 5/8"	9.625

FORMATION TOP DETAILS		
TVDPath	MDPath	Formation
2358.0	2564.6	Wasatch G
2418.0	2632.6	Wasatch G Base
4588.0	5086.1	Ohio Creek
4768.0	5281.2	Upper MVRD
5788.0	6333.0	Top of Gas
7368.0	7913.5	Cameo
8078.0	8623.5	RLNS



DESIGN TARGET DETAILS						
Name	TVD	+N/-S	+E/-W	Northing	Easting	Latitude
PBHL(PA 534-26)	8231.0	-1928.2	1456.8	1612422.50	2305325.20	39° 29' 20.494 N

Longitude						
107° 57' 42.154 W						

SECTION DETAILS										
Sec	MD	Inc	Azi	TVD	+N/-S	+E/-W	Dleg	TFace	VSect	Target
1	0.0	0.00	0.00	0.0	0.0	0.0	0.00	0.00	0.0	
2	180.0	0.00	0.00	180.0	0.0	0.0	0.00	0.00	0.0	
3	1113.5	28.00	142.93	1076.8	-178.4	134.8	3.00	142.93	223.6	
4	4831.6	28.00	142.93	4359.5	-1571.3	1187.2	0.00	0.00	1969.4	
5	6698.5	0.00	0.00	6153.0	-1928.2	1456.8	1.50	180.00	2416.6	
6	8776.5	0.00	0.00	8231.0	-1928.2	1456.8	0.00	0.00	2416.6	PBHL(PA 534-26)