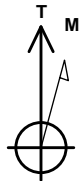


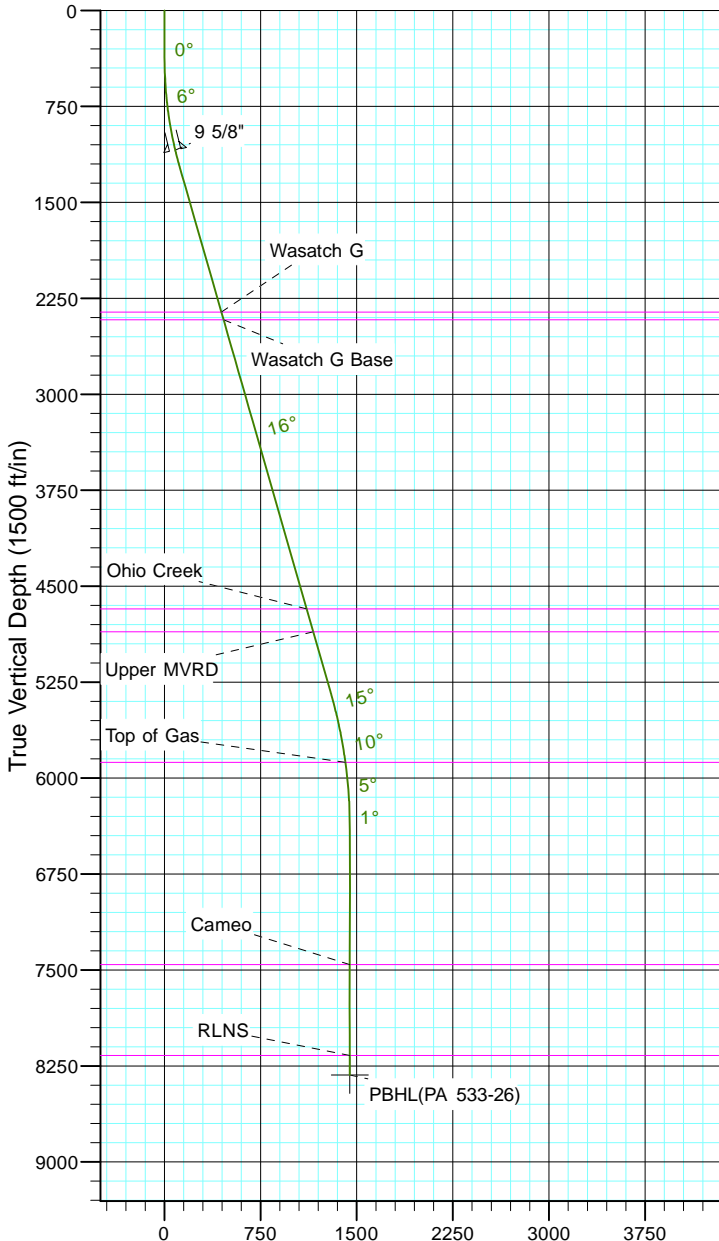
TEP Rocky Mountain LLC

Project: Garfield County, CO NAD83
Site: PA 23-26 Pad
Well: PA 533-26
Wellbore: OH
Design: Plan #1



Azimuths to True North
Magnetic North: 9.70°

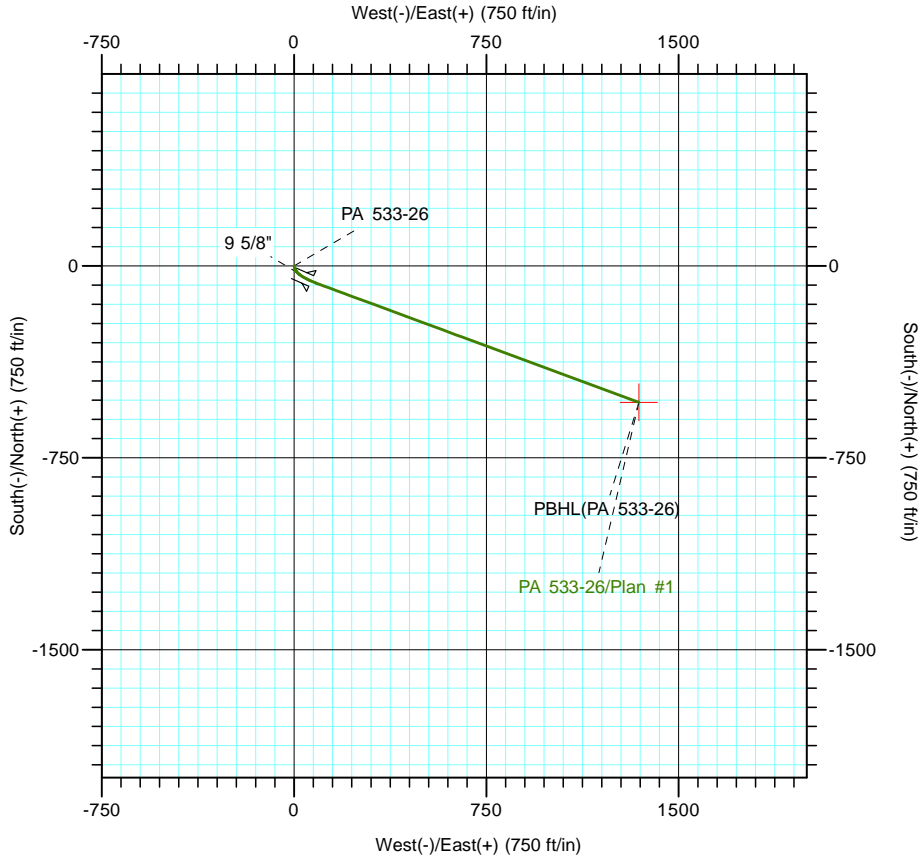
Magnetic Field
Strength: 51543.2snT
Dip Angle: 65.59°
Date: 5/19/2017
Model: IGRF2015



Vertical Section at 111.63° (1500 ft/in)

CASING DETAILS			
TVD	MD	Name	Size
1092.8	1100.0	9 5/8"	9.625

FORMATION TOP DETAILS		
TVDPath	MDPath	Formation
2358.0	2415.4	Wasatch G
2418.0	2477.8	Wasatch G Base
4678.0	4828.9	Ohio Creek
4858.0	5016.2	Upper MVRD
5878.0	6067.8	Top of Gas
7458.0	7649.3	Cameo
8168.0	8359.3	RLNS



DESIGN TARGET DETAILS						
Name	TVD	+N/-S	+E/-W	Northing	Easting	Latitude
PBHL(PA 533-26)	8321.0	-533.2	1344.9	1613820.20	2305266.20	39° 29' 34.287 N

SECTION DETAILS										
Sec	MD	Inc	Azi	TVD	+N/-S	+E/-W	Dleg	TFace	VFace	Target
1	0.0	0.00	0.00	0.0	0.0	0.0	0.00	0.00	0.0	
2	300.0	0.00	0.00	300.0	0.0	0.0	0.00	0.00	0.0	
3	550.0	5.00	165.00	549.7	-10.5	2.8	2.00	165.00	6.5	
4	1235.8	16.00	110.30	1224.1	-72.5	99.7	2.00	-71.58	119.4	
5	5515.6	16.00	110.30	5338.1	-481.8	1206.1	0.00	0.00	1298.8	
6	6582.3	0.00	0.00	6391.0	-533.2	1344.9	1.50	180.00	1446.8	
7	8512.3	0.00	0.00	8321.0	-533.2	1344.9	0.00	0.00	1446.8	PBHL(PA 533-26)