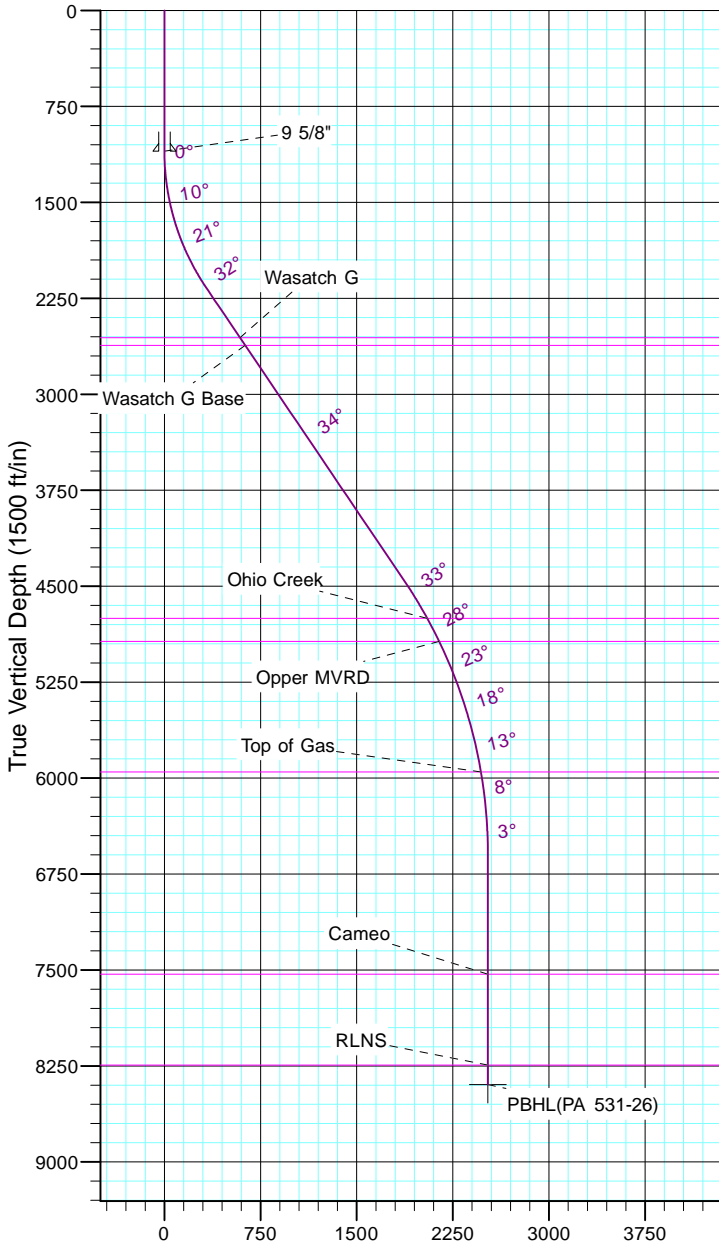


TEP Rocky Mountain LLC
Project: Garfield County, CO NAD83
Site: PA 23-26 Pad
Well: PA 531-26
Wellbore: OH
Design: Plan #1



Azimuths to True North
Magnetic North: 9.70°

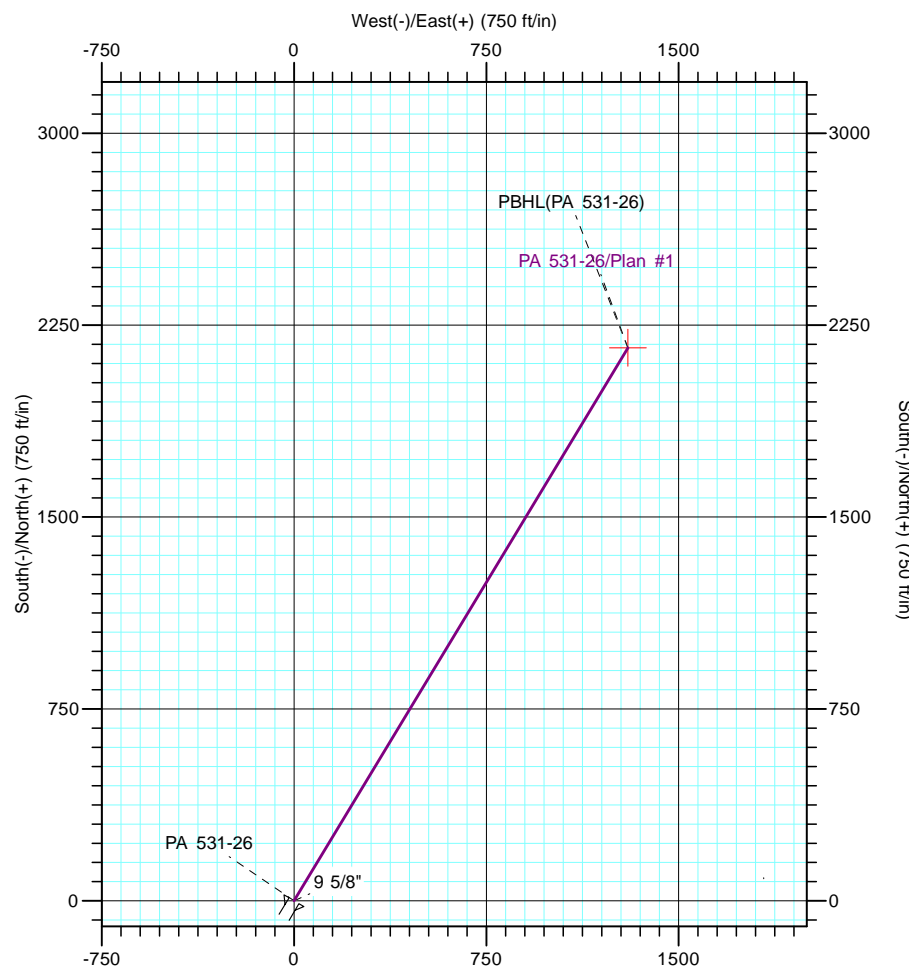
Magnetic Field
Strength: 51543.2snT
Dip Angle: 65.59°
Date: 5/19/2017
Model: IGRF2015



Vertical Section at 31.08° (1500 ft/in)

CASING DETAILS			
TVD	MD	Name	Size
1100.0	1100.0	9 5/8"	9.625

FORMATION TOP DETAILS			
TVDPath	MDPath	Formation	
2558.0	2703.8	Wasatch G	
2618.0	2776.2	Wasatch G Base	
4753.0	5341.3	Ohio Creek	
4933.0	5543.9	Oppen MVRD	
5953.0	6618.1	Top of Gas	
7533.0	8201.1	Cameo	
8243.0	8911.1	RLNS	



DESIGN TARGET DETAILS							
Name	TVD	+N/-S	+E/-W	Northing	Easting	Latitude	Longitude
PBHL(PA 531-26)	8396.0	2161.3	1302.7	1616515.00	2305304.60	39° 30' 0.922 N	107° 57' 43.832 W

SECTION DETAILS										
Sec	MD	Inc	Azi	TVD	+N/-S	+E/-W	Dleg	TFace	VSect	Target
1	0.0	0.00	0.00	0.0	0.0	0.0	0.00	0.00	0.0	
2	1100.0	0.00	0.00	1100.0	0.0	0.0	0.00	0.00	0.0	
3	2233.4	34.00	31.08	2168.0	279.7	168.6	3.00	31.08	326.5	
4	4994.4	34.00	31.08	4457.0	1602.0	965.6	0.00	0.00	1870.5	
5	7261.1	0.00	0.00	6593.0	2161.3	1302.7	1.50	180.00	2523.6	
6	9064.1	0.00	0.00	8396.0	2161.3	1302.7	0.00	0.00	2523.6	PBHL(PA 531-26)