

TEP Rocky Mountain LLC
Project: Garfield County, CO NAD83
Site: PA 23-26 Pad
Well: PA 521-26
Wellbore: OH
Design: Plan #1



Azimuths to True North
Magnetic North: 9.70°

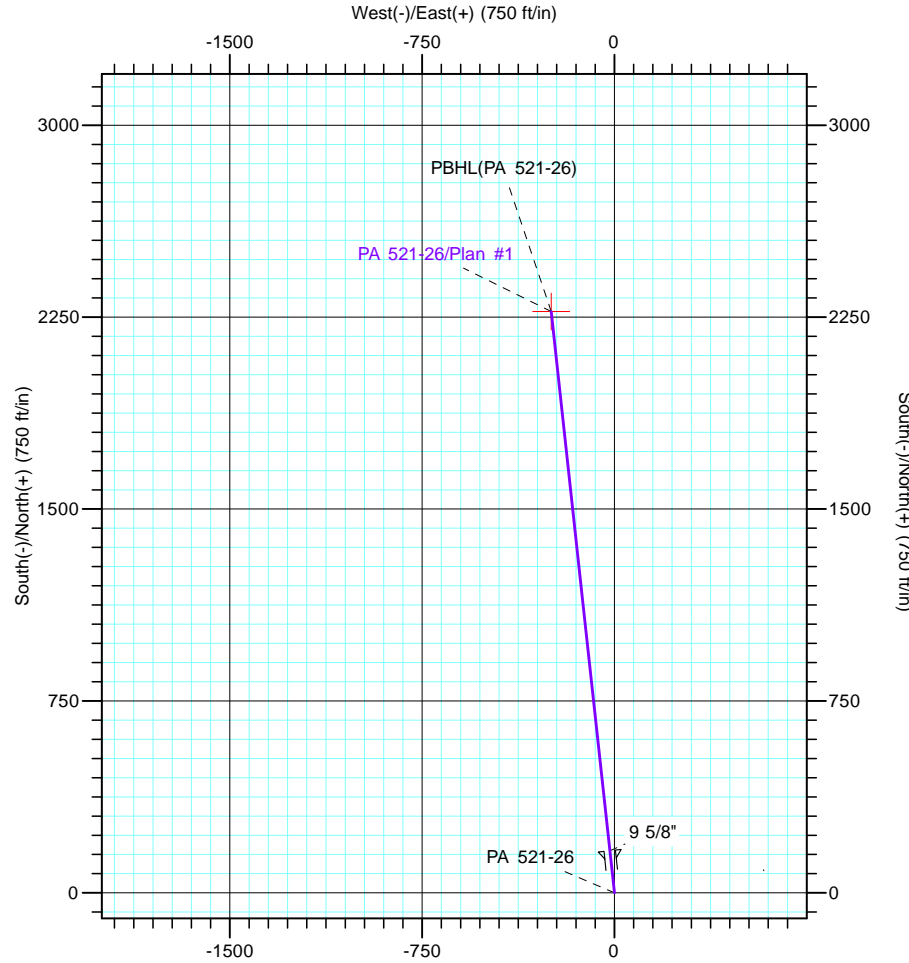
Magnetic Field
Strength: 51543.2snT
Dip Angle: 65.59°
Date: 5/19/2017
Model: IGRF2015



Vertical Section at 353.80° (1500 ft/in)

CASING DETAILS			
TVD	MD	Name	Size
1076.8	1100.0	9 5/8"	9.625

FORMATION TOP DETAILS			
TVDPATH	MDPATH	FORMATION	
2758.0	2954.9	Wasatch G	
2818.0	3021.1	Wasatch G Base	
4783.0	5189.2	Ohio Creek	
4963.0	5387.0	Upper MVRD	
5983.0	6447.8	Top of Gas	
7563.0	8029.1	Cameo	
8273.0	8739.1	RLNS	



DESIGN TARGET DETAILS							
Name	TVD	+N/-S	+E/-W	Northing	Easting	Latitude	Longitude
PBHL(PA 521-26)	8426.0	2271.5	-246.8	1616677.20	2303758.60	39° 30' 2.110 N	107° 58' 3.604 W

SECTION DETAILS										
Sec	MD	Inc	Azi	TVD	+N/-S	+E/-W	Dleg	TFace	Vsect	Target
1	0.0	0.00	0.00	0.0	0.0	0.0	0.00	0.00	0.0	
2	300.0	0.00	0.00	300.0	0.0	0.0	0.00	0.00	0.0	
3	1133.4	25.00	353.80	1107.2	177.9	-19.3	3.00	353.80	179.0	
4	5269.4	25.00	353.80	4855.7	1915.7	-208.1	0.00	0.00	1927.0	
5	6936.1	0.00	0.00	6470.0	2271.5	-246.8	1.50	180.00	2284.9	
6	8892.1	0.00	0.00	8426.0	2271.5	-246.8	0.00	0.00	2284.9	PBHL(PA 521-26)