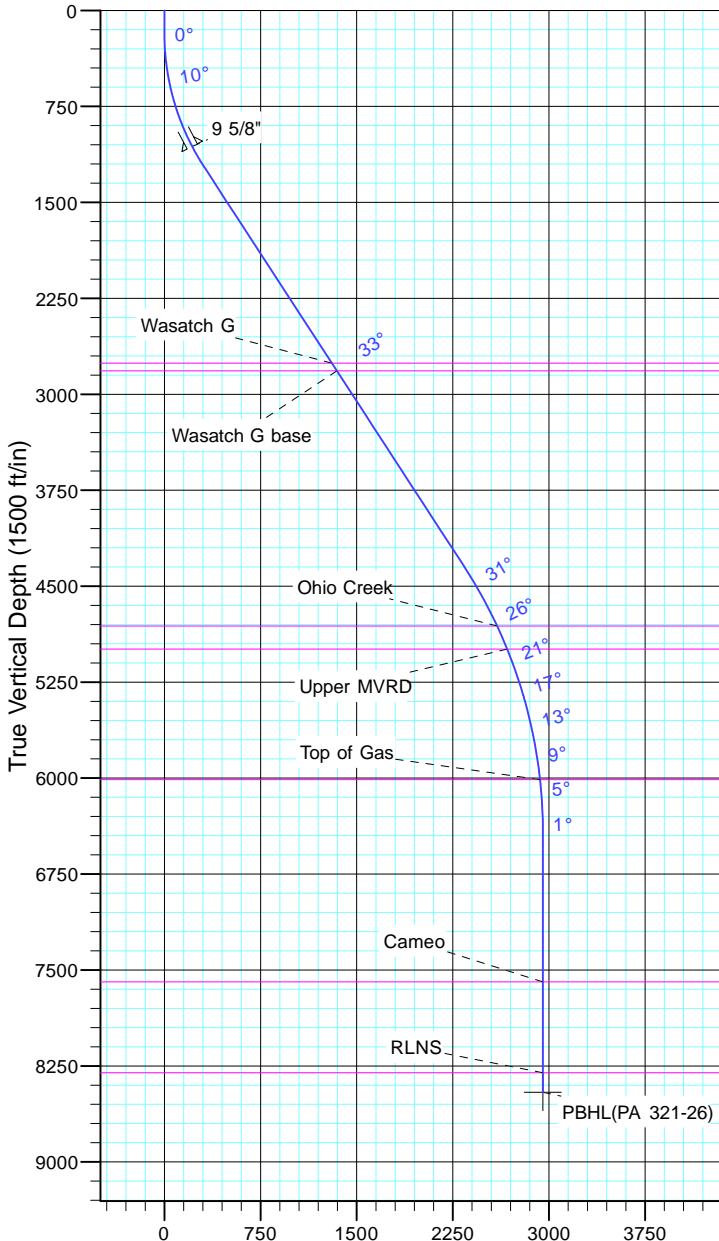


TEP Rocky Mountain LLC
Project: Garfield County, CO NAD83
Site: PA 23-26 Pad
Well: PA 321-26
Wellbore: OH
Design: Plan #1



Azimuths to True North
Magnetic North: 9.70°

Magnetic Field
Strength: 51543.2snT
Dip Angle: 65.59°
Date: 5/19/2017
Model: IGRF2015



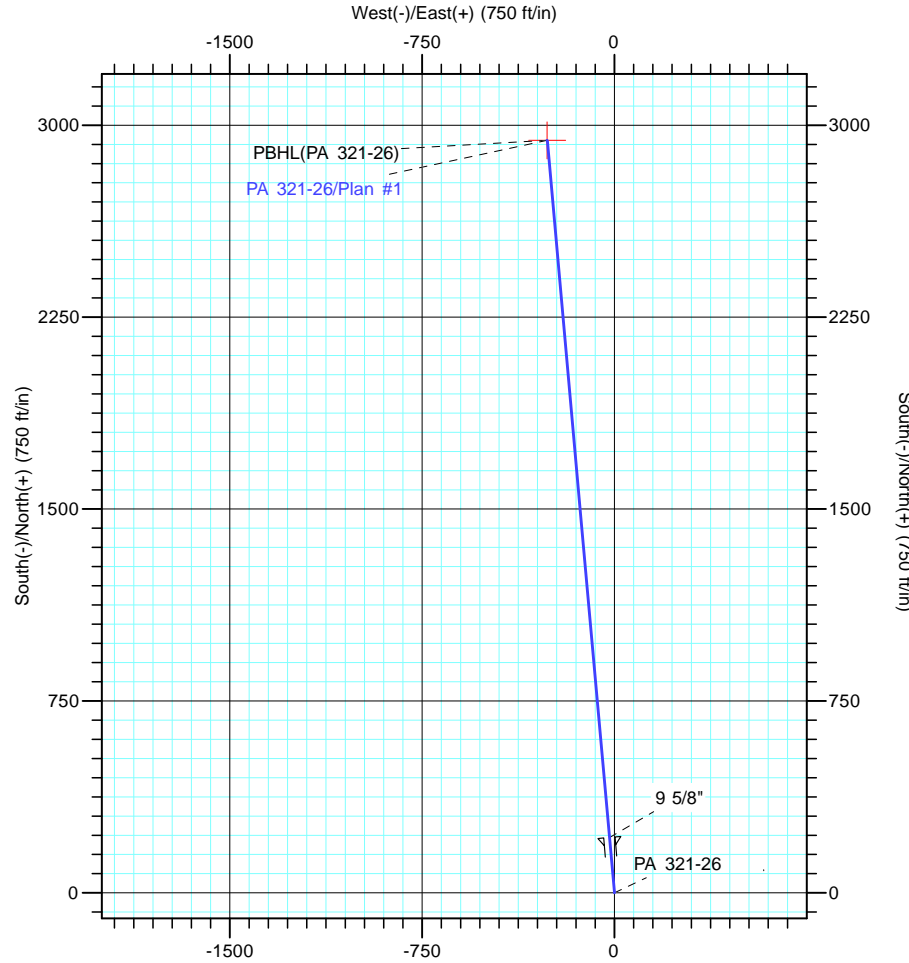
Vertical Section at 354.90° (1500 ft/in)

CASING DETAILS

TVD	MD	Name	Size
1064.8	1100.0	9 5/8"	9.625

FORMATION TOP DETAILS

TVDPath	MDPath	Formation
2758.0	3113.6	Wasatch G
2818.0	3185.1	Wasatch G base
4813.0	5541.2	Ohio Creek
4993.0	5737.4	Upper MVRD
6013.0	6792.4	Top of Gas
7593.0	8373.2	Cameo
8303.0	9083.2	RLNS



DESIGN TARGET DETAILS

Name	TVD	+N/-S	+E/-W	Northing	Easting	Latitude	Longitude
PBHL(PA 321-26)	8456.0	2940.9	-262.3	1617347.00	2303776.20	39° 30' 8.732 N	107° 58' 3.612 W

SECTION DETAILS

Sec	MD	Inc	Azi	TVD	+N/-S	+E/-W	Dleg	TFace	VSect	Target
1	0.0	0.00	0.00	0.0	0.0	0.0	0.00	0.00	0.0	
2	180.0	0.00	0.00	180.0	0.0	0.0	0.00	0.00	0.0	
3	1279.9	33.00	354.90	1220.1	306.9	-27.4	3.00	354.90	308.1	
4	5004.3	33.00	354.90	4343.7	2327.2	-207.6	0.00	0.00	2336.4	
5	7204.2	0.00	0.00	6424.0	2940.9	-262.3	1.50	180.00	2952.6	
6	9236.2	0.00	0.00	8456.0	2940.9	-262.3	0.00	0.00	2952.6	PBHL(PA 321-26)