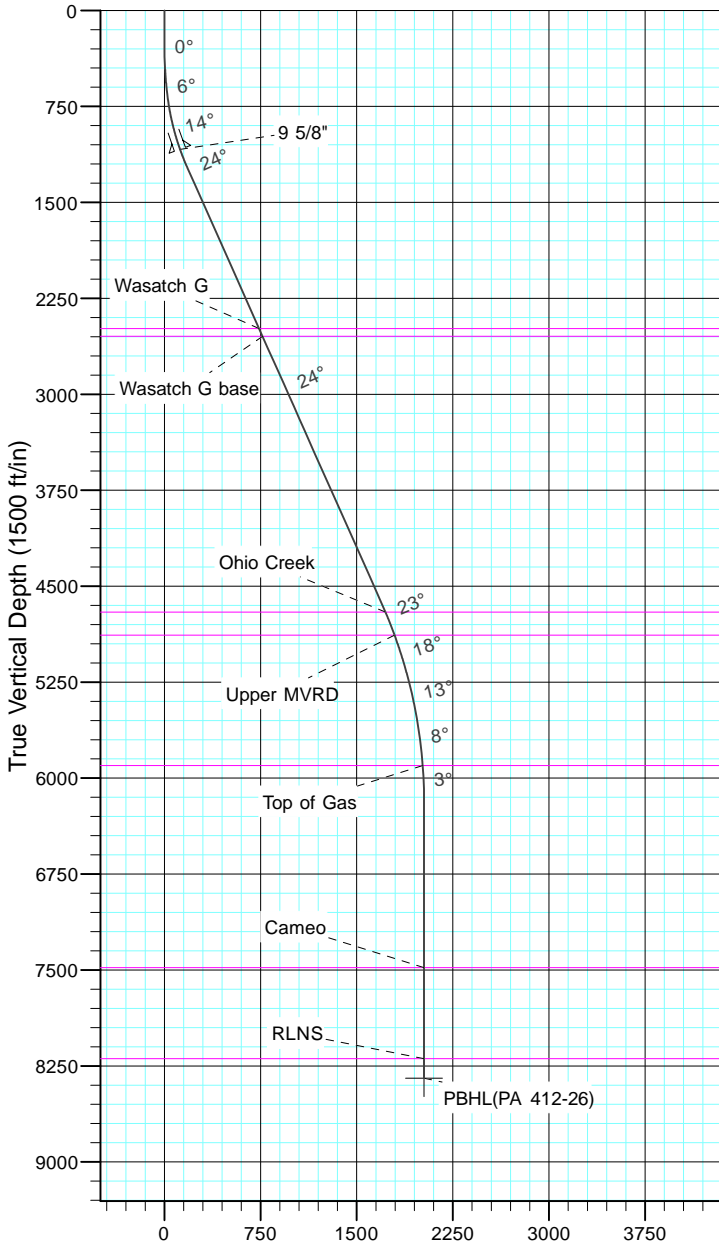


TEP Rocky Mountain LLC  
Project: Garfield County, CO NAD83  
Site: PA 23-26 Pad  
Well: PA 412-26  
Wellbore: OH  
Design: Plan #1



Azimuths to True North  
Magnetic North: 11.44°  
  
Magnetic Field  
Strength: 53054.0snT  
Dip Angle: 65.99°  
Date: 12/31/2004  
Model: IGRF2000



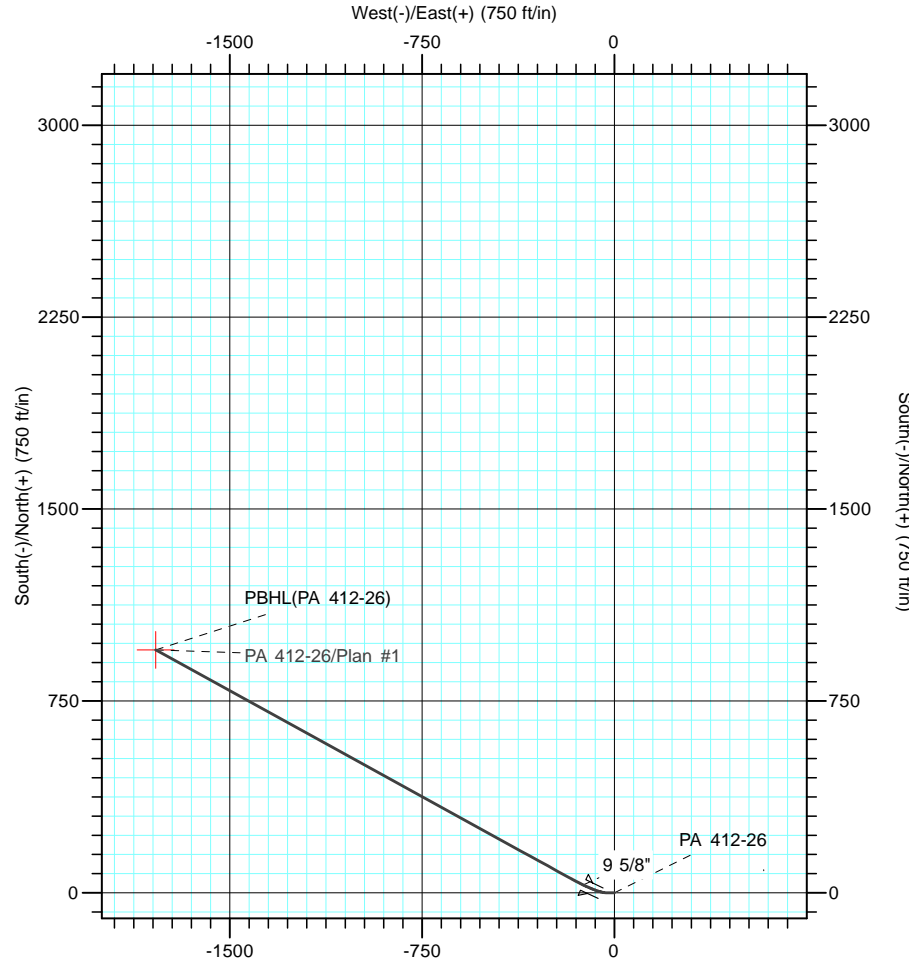
Vertical Section at 297.95° (1500 ft/in)

CASING DETAILS

TVD	MD	Name	Size
1086.2	1100.0	9 5/8"	9.625

FORMATION TOP DETAILS

TVDPath	MDPath	Formation
2488.0	2631.9	Wasatch G
2548.0	2697.6	Wasatch G base
4703.0	5056.3	Ohio Creek
4883.0	5249.7	Upper MVRD
5903.0	6296.4	Top of Gas
7483.0	7876.6	Cameo
8193.0	8586.6	RLNS



DESIGN TARGET DETAILS

Name	TVD	+N/-S	+E/-W	Northing	Easting	Latitude	Longitude
PBHL(PA 412-26)	8346.0	949.6	-1789.6	1615386.70	2302112.40	39° 29' 48.917 N	107° 58' 24.150 W

SECTION DETAILS

Sec	MD	Inc	Azi	TVD	+N/-S	+E/-W	Dleg	TFace	VSect	Target
1	0.0	0.00	0.00	0.0	0.0	0.0	0.00	0.00	0.0	
2	275.0	0.00	0.00	275.0	0.0	0.0	0.00	0.00	0.0	
3	675.0	8.00	270.00	673.7	0.0	-27.9	2.00	270.00	24.6	
4	1255.1	24.00	298.89	1230.2	57.4	-172.7	3.00	41.07	179.4	
5	4983.6	24.00	298.89	4636.4	790.1	-1500.5	0.00	0.00	1695.8	
6	6583.6	0.00	0.00	6190.0	949.6	-1789.6	1.50	180.00	2026.0	
7	8739.6	0.00	0.00	8346.0	949.6	-1789.6	0.00	0.00	2026.0	PBHL(PA 412-26)