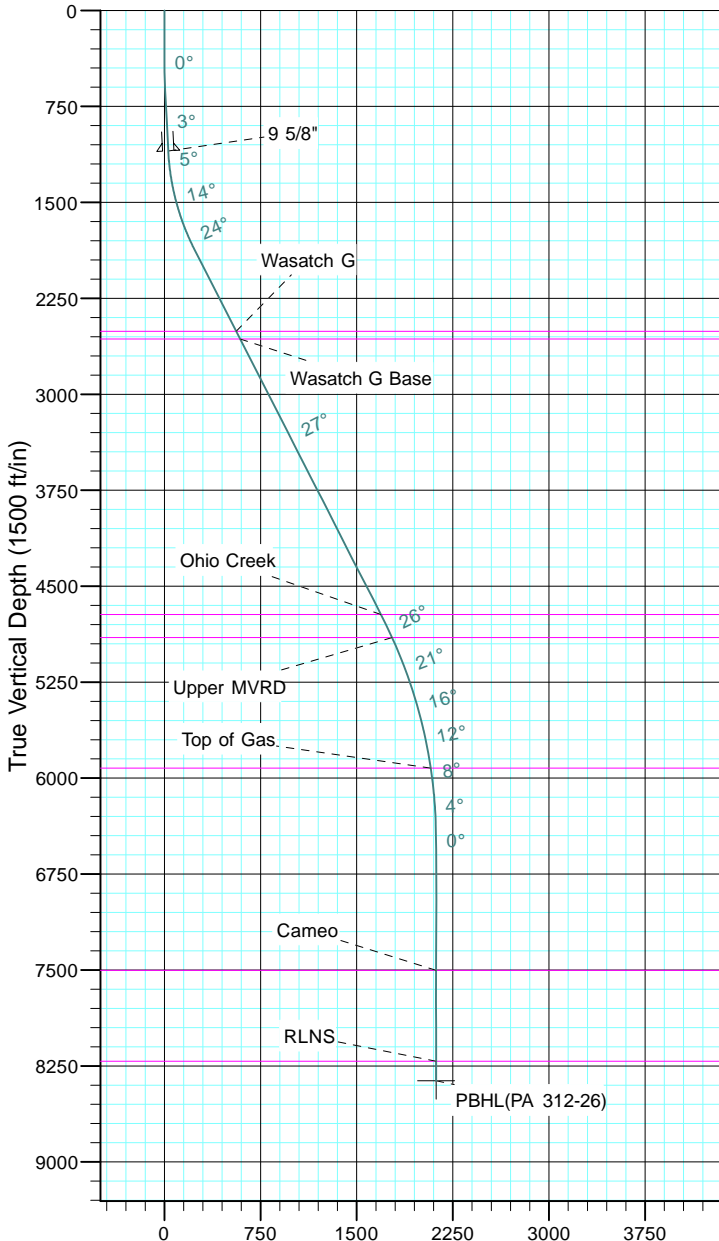


TEP Rocky Mountain LLC  
Project: Garfield County, CO NAD83  
Site: PA 23-26 Pad  
Well: PA 312-26  
Wellbore: OH  
Design: Plan #1



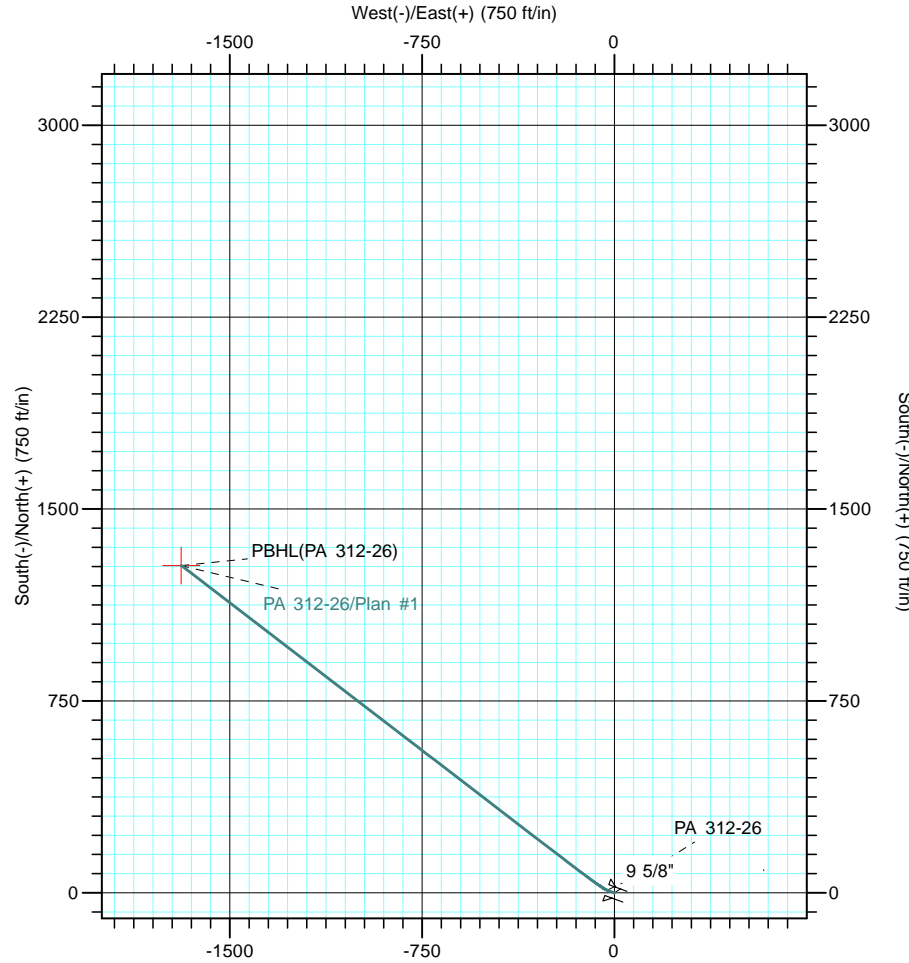
Azimuths to True North  
Magnetic North: 11.44°  
  
Magnetic Field  
Strength: 53054.0snT  
Dip Angle: 65.99°  
Date: 12/31/2004  
Model: IGRF2000



Vertical Section at 307.13° (1500 ft/in)

CASING DETAILS			
TVD	MD	Name	Size
1099.2	1100.0	9 5/8"	9.625

FORMATION TOP DETAILS		
TVDPath	MDPath	Formation
2508.0	2619.6	Wasatch G
2568.0	2687.0	Wasatch G Base
4723.0	5105.7	Ohio Creek
4903.0	5305.8	Upper MVRD
5923.0	6372.8	Top of Gas
7503.0	7954.9	Cameo
8213.0	8664.9	RLNS



DESIGN TARGET DETAILS						
Name	TVD	+N/-S	+E/-W	Northing	Easting	Latitude
PBHL(PA 312-26)	8366.0	1279.2	-1689.5	1615713.60	2302228.90	39° 29' 52.179 N

						Longitude
						107° 58' 22.778 W

SECTION DETAILS										
Sec	MD	Inc	Azi	TVD	+N/-S	+E/-W	Dleg	TFace	VSect	Target
1	0.0	0.00	0.00	0.0	0.0	0.0	0.00	0.00	0.0	
2	400.0	0.00	0.00	400.0	0.0	0.0	0.00	0.00	0.0	
3	600.0	3.00	290.00	599.9	1.8	-4.9	1.50	290.00	5.0	
4	1100.0	3.00	290.00	1099.2	10.7	-29.5	0.00	0.00	30.0	
5	1905.4	27.00	307.56	1871.6	131.2	-196.7	3.00	19.56	236.0	
6	5135.5	27.00	307.56	4749.6	1025.3	-1359.4	0.00	0.00	1702.7	
7	6935.9	0.00	0.00	6484.0	1279.2	-1689.5	1.50	180.00	2119.2	
8	8817.9	0.00	0.00	8366.0	1279.2	-1689.5	0.00	0.00	2119.2	PBHL(PA 312-26)