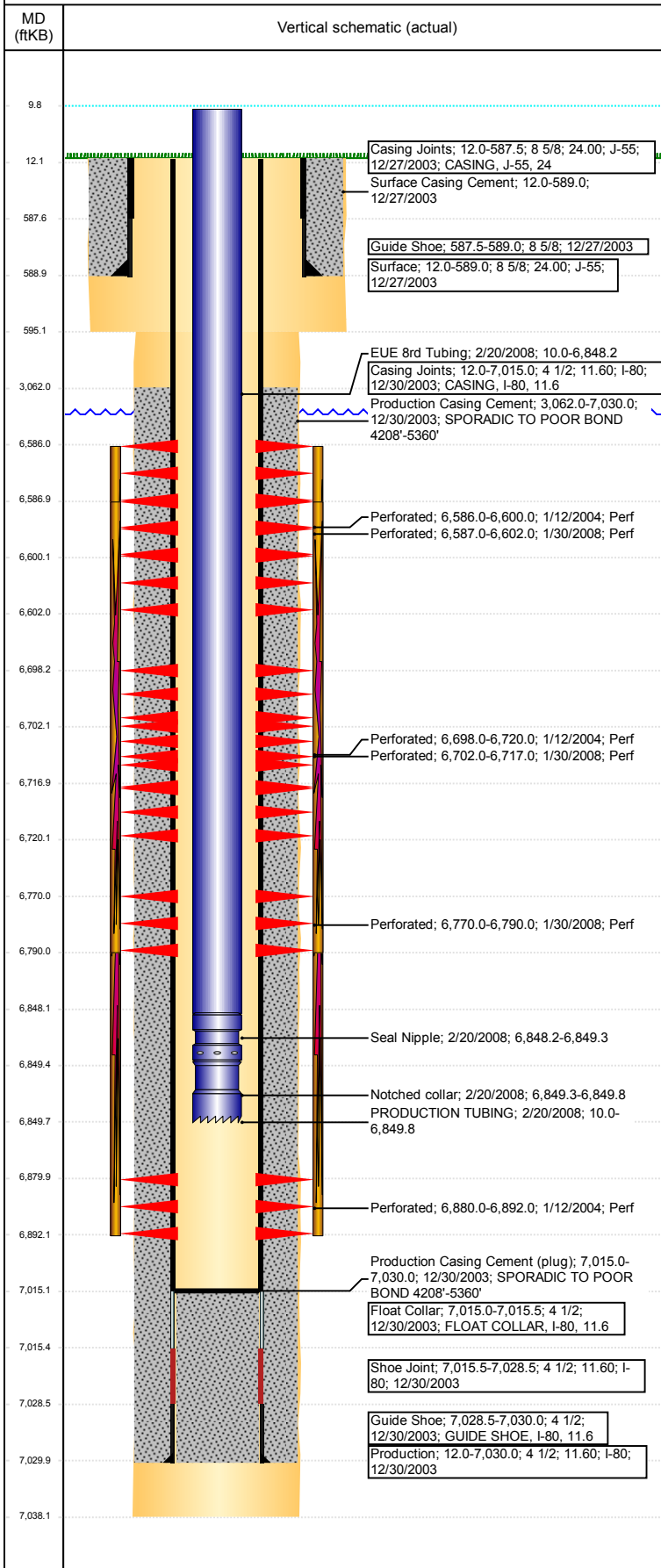


Well Name: FARMLAND 10-32

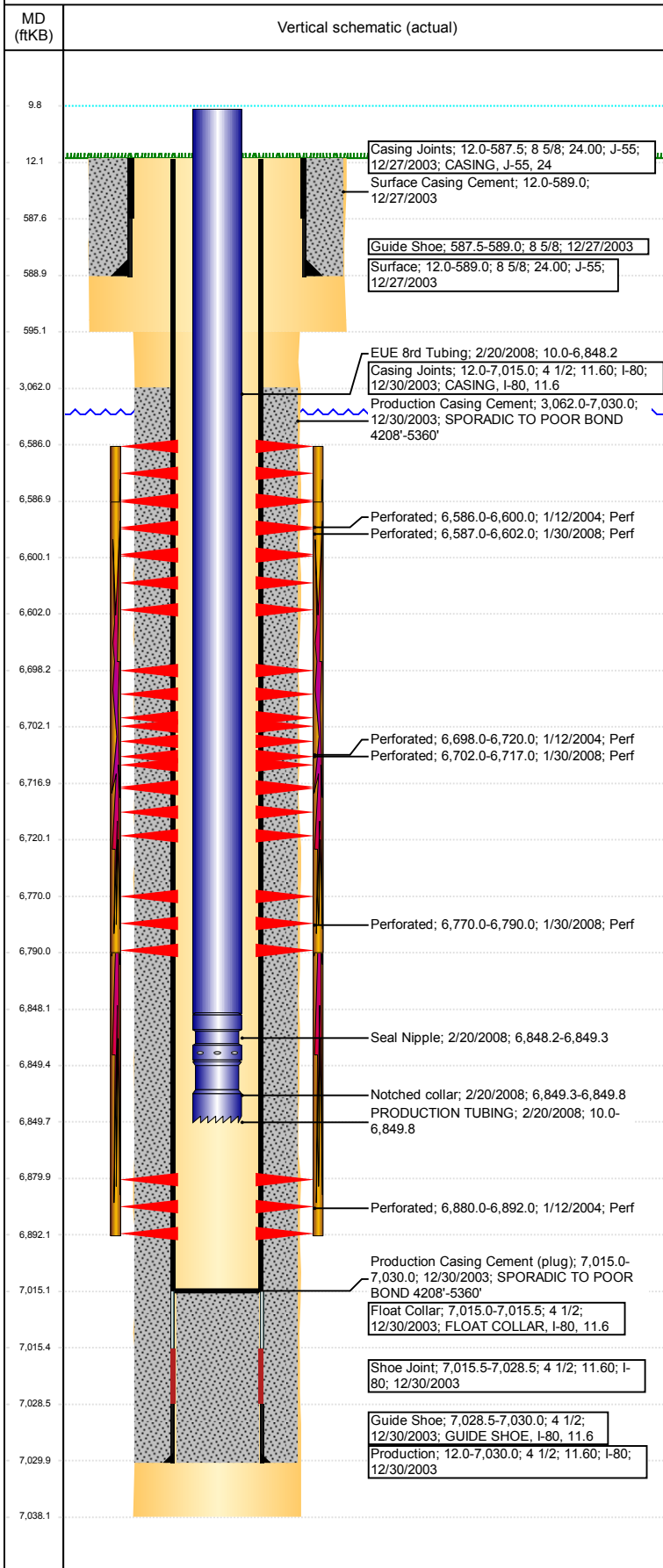
VERTICAL - ORIGINAL HOLE, 8/15/2017 10:29:09 AM



Well Header								
API 05-123-21852		Business Unit DJ BASIN		District 15	Well Config VERTICAL			
Original KB Elevation (ft) 4,652		KB - GL / MSL (ftKB) 12.00		Spud Date 12/26/2003		P & A Date		
Comment COMPLETE DRILLING REPORTS AND SUBSEQUENT OPERATIONS REPORTS MISSING FROM WELL FILE								
Directions To Well								
Congressional Location								
Quarter 3 NW	Quarter 4 SE	Section 32	Township 6	Twntshp N/S Dir N	Range 64	Range E/W Dir W		
Bottom Hole Location								
North-South Distance (ft)		From N or S Line		East-West Distance (ft)		From E or W Line		
Plug Back Total Depths								
Date	Depth (ftKB)	Method		Com				
12/30/2003	7,015.0	CASING TALLY		TOP OF FLOAT COLLAR				
1/9/2004	6,998.0	CASED HOLE LOG		DEPTH LOGGER ON CBL				
1/15/2004	7,000.0	TAG		CLEAN OUT				
2/20/2008	7,015.0	TAG		DRILL AND PUSH PLUG TO 7015'				
Wellbore Sections								
Section Des		Size (in)		Act Top, MD (ftKB)		Act Btm, MD (ftKB)		
SURFACE		12 1/4		12		595		
PRODUCTION		7 7/8		595		7,038		
Zone Statuses								
Zone Name	Status Date	Status	Fluid Type	Job	Prod Method			
NIOBRARA	2/18/2004	PR		DRILLING/CO...				
NIOBRARA	2/5/2008	PR		RE-FRAC, 2/1/...				
CODELL	2/18/2004	PR		DRILLING/CO...				
CODELL	2/5/2008	PR		RE-FRAC, 2/1/...				
Casing Strings								
Surface, 589.0ftKB								
Casing Description Surface		Run Date 12/27/2003	OD (in) 8 5/8	Wt/Len (l...) 24.00	Grade J-55	Top, MD (ft...) 12.0	MD (ftKB) 589.0	
Production, 7,030.0ftKB								
Casing Description Production		Run Date 12/30/2003	OD (in) 4 1/2	Wt/Len (l...) 11.60	Grade I-80	Top, MD (ft...) 12.0	MD (ftKB) 7,030.0	
Cement								
Description Surface Casing Cement				Top Depth (ftKB) 12.0		Bottom Depth (ftKB) 589.0		
Description Production Casing Cement				Top Depth (ftKB) 3,062.0		Bottom Depth (ftKB) 7,030.0		
Tubing Strings								
Tubing Description PRODUCTION TUBING		Run Date 1/15/2004	String... 2 3/8	ID (in) 2.00	Wt (lb/ft) 4.70	Grade J55	Len (ft) 6,826.00	Set De...
Tubing Description PRODUCTION TUBING		Run Date 2/20/2008	String... 2 3/8	ID (in) 2.00	Wt (lb/ft) 4.70	Grade J-55	Len (ft) 6,839.82	Set De...
Tubing Components								
Item Des		OD (in)	Wt (lb/ft)	Grade	Jts	Len (ft)	Btm (ftKB)	Btm (TVD) (ftKB)
EUE 8rd Tubing		2 3/8	4.70	J-55	220	6,838.17	6,848.2	
Seal Nipple		2 3/8			1	1.15	6,849.3	
Notched collar		2 3/8				0.50	6,849.8	
Other In Hole								
Run Date		Des			OD (in)	Top (ftKB)	Btm (ftKB)	
Logs								
Date		Type				Top, MD (ftKB)		Btm, MD (ftKB)
12/30/2003		COMPENSATED DENSITY				3,500.0		7,015.0
12/30/2003		INDUCTION				582.0		7,035.0
1/9/2004		CBL/CCL/GR				3,100.0		6,998.0
1/30/2008		PERFORATION				6,550.0		6,650.0

Well Name: FARMLAND 10-32

VERTICAL - ORIGINAL HOLE, 8/15/2017 10:29:10 AM



Perforation Data					
Linked Zone	Bnch/St g	Sum of Entered Shot Total	Top (ftKB)	Btm (ftKB)	Date
NIOBRARA, ORIGINAL HOLE	A	7	6,586.00	6,600.00	1/12/2004
NIOBRARA, ORIGINAL HOLE	A	15	6,587.00	6,602.00	1/30/2008
NIOBRARA, ORIGINAL HOLE	B	11	6,698.00	6,720.00	1/12/2004
NIOBRARA, ORIGINAL HOLE	B	15	6,702.00	6,717.00	1/30/2008
NIOBRARA, ORIGINAL HOLE	C	20	6,770.00	6,790.00	1/30/2008
CODELL, ORIGINAL HOLE		24	6,880.00	6,892.00	1/12/2004
Total (Sum)		92			

Stimulation Intervals		
Start Date 1/13/2004	Primary Job Type DRILLING/COMPLETION - ORIGINAL	
Technical Result	Tech Result Details	Tech Result Note
Comment LIMITED ENTRY FRAC		
Start Date 2/1/2008	Primary Job Type RE-FRAC	
Technical Result	Tech Result Details	Tech Result Note
Comment		