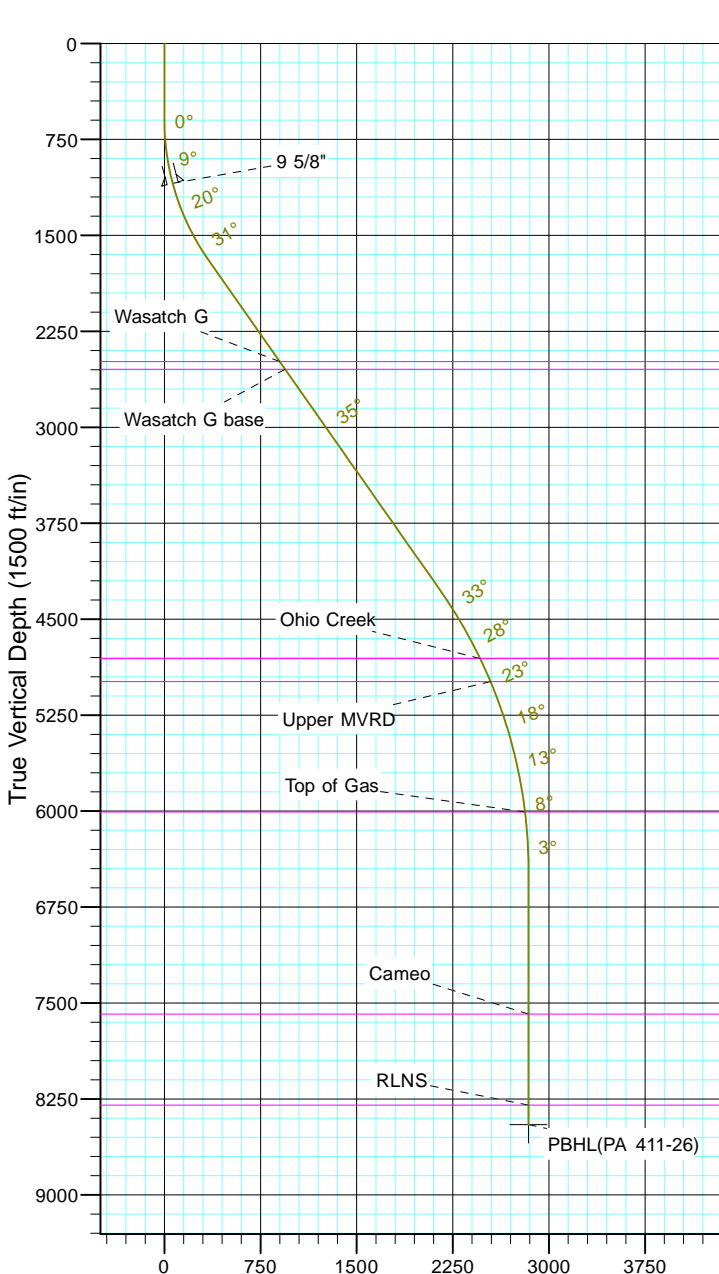


TEP Rocky Mountain LLC  
Project: Garfield County, CO NAD83  
Site: PA 23-26 Pad  
Well: PA 411-26  
Wellbore: OH  
Design: Plan #1



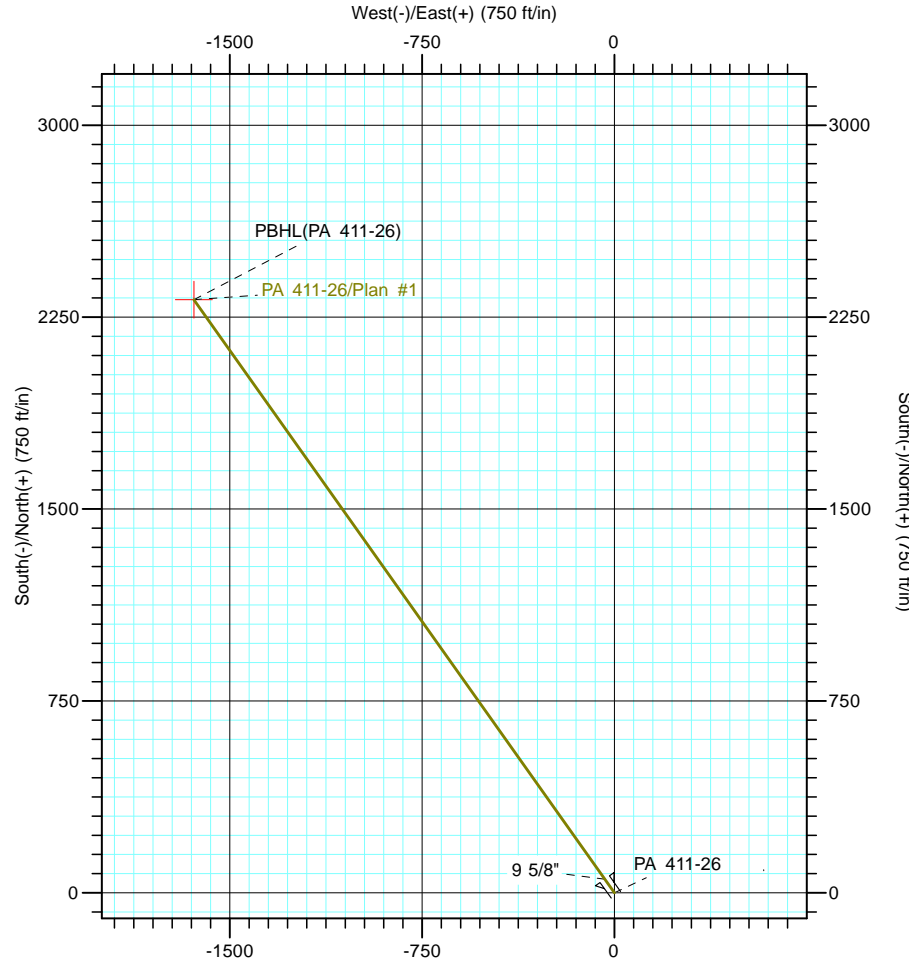
Azimuths to True North  
Magnetic North: 9.70°  
  
Magnetic Field  
Strength: 51543.2snT  
Dip Angle: 65.59°  
Date: 5/19/2017  
Model: IGRF2015



Vertical Section at 324.72° (1500 ft/in)

CASING DETAILS			
TVD	MD	Name	Size
1094.3	1100.0	9 5/8"	9.625

FORMATION TOP DETAILS		
TVDPath	MDPath	Formation
2488.0	2734.2	Wasatch G
2548.0	2807.4	Wasatch G base
4808.0	5533.8	Ohio Creek
4988.0	5731.1	Upper MVRD
6008.0	6789.4	Top of Gas
7588.0	8370.5	Cameo
8298.0	9080.5	RLNS



DESIGN TARGET DETAILS						
Name	TVD	+N/-S	+E/-W	Northing	Easting	Latitude
PBHL(PA 411-26)	8451.0	2318.6	-1640.6	1616762.00	2302359.10	39° 30' 2.572 N

						Longitude
						107° 58' 21.481 W

SECTION DETAILS										
Sec	MD	Inc	Azi	TVD	+N/-S	+E/-W	Dleg	TFace	VSect	Target
1	0.0	0.00	0.00	0.0	0.0	0.0	0.00	0.00	0.0	
2	600.0	0.00	0.00	600.0	0.0	0.0	0.00	0.00	0.0	
3	1766.6	35.00	324.72	1695.4	281.9	-199.5	3.00	324.72	345.4	
4	4912.2	35.00	324.72	4272.1	1754.7	-1241.6	0.00	0.00	2149.6	
5	7245.5	0.00	0.00	6463.0	2318.6	-1640.6	1.50	180.00	2840.3	
6	9233.5	0.00	0.00	8451.0	2318.6	-1640.6	0.00	0.00	2840.3	PBHL(PA 411-26)