

# MULTI WELL PLAN COYOTE TRAILS PAD

SW 1/4 SE 1/4, SECTION 28, TOWNSHIP 1 NORTH, RANGE 68 WEST

WELL BORES CONTINUE INTO  
SECTION 21 (SHEET 3)

NW COR. SEC. 28  
FOUND #6 REB.  
W/ 3-1/4" A.C.  
PLS 13155

N 1/4 COR. SEC. 28  
FOUND #6 REB.

NE COR. SEC. 28  
FOUND #6 REB.  
W/ 2" A.C.  
PLS 25937

W 1/4 COR.  
SEC. 28  
FOUND #6 REB.  
W/ 2" A.C.

C 1/4 COR. SEC. 28  
(CALCULATED FROM  
RECORDS OF SURVEY)

E 1/4 COR.  
SEC. 28  
FOUND 2-3/8"  
ALUM. PIPE  
W/ 3-1/4" A.C.  
PLS 18482

SW COR. SEC. 28  
FOUND #6 REB.  
W/ 2.5" A.C.  
PLS 28656

S 1/4 COR. SEC. 28  
FOUND ALUM. PIPE  
W/ 3-1/4" A.C.  
PLS 4846

SE COR. SEC. 28  
FOUND #6 REB.  
W/ 3-1/4" A.C.  
PLS 13258

\*NOTES ON NEXT PAGE

WELL BORES CONTINUE INTO  
SECTION 33 (SHEET 4)

WELL BORES CONTINUE INTO  
SECTION 27 (SHEET 10)



0 1000'  
Scale 1" = 1000 ft

## LEGEND

- - FOUND/SET SURVEY MONUMENT PER MONUMENT RECORD EXCEPTIONS NOTED.
- - CALCULATED SURVEY MONUMENT POSITION
- (C) - CALCULATED DIMENSION



DRAWN BY	RPM	CHECKED BY	AAD
INITIAL SUBMITTAL	7/7/2017	REVISED	N/A
DRAWING SIZE	8.5" X 11"	JOB NO.	EXT01N68W28-01
SHEET	1 OF 10		



4007 S. LINCOLN AVENUE, SUITE 405 • LOVELAND, COLORADO 80537  
P: 970.353.7600 • F: 970.353.7601 • www.baselinecorp.com



# MULTI WELL PLAN COYOTE TRAILS PAD

SW 1/4 SE 1/4, SECTION 28, TOWNSHIP 1 NORTH, RANGE 68 WEST

## NOTES (SURFACE HOLES, SECTION 28, TOWNSHIP 1 NORTH, RANGE 68W):

COYOTE TRAILS 28N-20-1N TO BE AT 1199' FSL, 2337' FEL  
COYOTE TRAILS 28N-20-2C TO BE AT 1199' FSL, 2319' FEL  
COYOTE TRAILS 28N-20-3N TO BE AT 1199' FSL, 2301' FEL  
COYOTE TRAILS 28N-20-4N TO BE AT 1198' FSL, 2283' FEL  
COYOTE TRAILS 28N-20-5C TO BE AT 1198' FSL, 2265' FEL  
COYOTE TRAILS 28N-20-6N TO BE AT 1198' FSL, 2247' FEL  
COYOTE TRAILS 28N-20-7N TO BE AT 1198' FSL, 2229' FEL  
COYOTE TRAILS 28N-20-8C TO BE AT 1197' FSL, 2211' FEL  
COYOTE TRAILS 28N-20-9N TO BE AT 1197' FSL, 2193' FEL  
COYOTE TRAILS 28N-20-10N TO BE AT 1197' FSL, 2175' FEL  
COYOTE TRAILS 28N-20-11C TO BE AT 1196' FSL, 2157' FEL  
COYOTE TRAILS 28N-20-12N TO BE AT 1196' FSL, 2139' FEL  
COYOTE TRAILS 28N-20-13N TO BE AT 1196' FSL, 2121' FEL  
COYOTE TRAILS 28N-20-14C TO BE AT 1196' FSL, 2103' FEL  
COYOTE TRAILS 28N-20-15N TO BE AT 1195' FSL, 2085' FEL  
COYOTE TRAILS 28N-20-16N TO BE AT 1195' FSL, 2067' FEL  
COYOTE TRAILS 28N-20-17C TO BE AT 1195' FSL, 2049' FEL  
COYOTE TRAILS 28N-20-18N TO BE AT 1194' FSL, 2031' FEL  
COYOTE TRAILS 33W-25-1N TO BE AT 1201' FSL, 2427' FEL  
COYOTE TRAILS 33W-25-2N TO BE AT 1201' FSL, 2409' FEL  
COYOTE TRAILS 33W-25-3C TO BE AT 1151' FSL, 2409' FEL  
COYOTE TRAILS 33W-25-4N TO BE AT 1200' FSL, 2391' FEL  
COYOTE TRAILS 33W-25-5N TO BE AT 1150' FSL, 2391' FEL

COYOTE TRAILS 33W-25-6C TO BE AT 1200' FSL, 2373' FEL  
COYOTE TRAILS 33W-25-7N TO BE AT 1150' FSL, 2373' FEL  
COYOTE TRAILS 33W-25-8N TO BE AT 1200' FSL, 2355' FEL  
COYOTE TRAILS 33W-25-9C TO BE AT 1150' FSL, 2355' FEL  
COYOTE TRAILS 33W-25-10N TO BE AT 1149' FSL, 2337' FEL  
COYOTE TRAILS 33W-25-11N TO BE AT 1149' FSL, 2319' FEL  
COYOTE TRAILS 33S-20-1N TO BE AT 1149' FSL, 2301' FEL  
COYOTE TRAILS 33S-20-2C TO BE AT 1148' FSL, 2283' FEL  
COYOTE TRAILS 33S-20-3N TO BE AT 1148' FSL, 2265' FEL  
COYOTE TRAILS 33S-20-4N TO BE AT 1148' FSL, 2247' FEL  
COYOTE TRAILS 33S-20-5C TO BE AT 1148' FSL, 2229' FEL  
COYOTE TRAILS 33S-20-6N TO BE AT 1147' FSL, 2211' FEL  
COYOTE TRAILS 33S-20-7N TO BE AT 1147' FSL, 2193' FEL  
COYOTE TRAILS 34S-20-8C TO BE AT 1147' FSL, 2175' FEL  
COYOTE TRAILS 34S-20-9N TO BE AT 1146' FSL, 2157' FEL  
COYOTE TRAILS 34S-20-10N TO BE AT 1146' FSL, 2139' FEL  
COYOTE TRAILS 34S-20-11C TO BE AT 1146' FSL, 2121' FEL  
COYOTE TRAILS 34S-20-12N TO BE AT 1146' FSL, 2103' FEL  
COYOTE TRAILS 34S-20-13N TO BE AT 1145' FSL, 2085' FEL  
COYOTE TRAILS 34S-20-14C TO BE AT 1145' FSL, 2067' FEL  
COYOTE TRAILS 34S-20-15N TO BE AT 1145' FSL, 2049' FEL  
COYOTE TRAILS 34S-20-16N TO BE AT 1144' FSL, 2031' FEL

## NOTES (ENTRY POINTS, SECTION 28, TOWNSHIP 1 NORTH, RANGE 68W):

COYOTE TRAILS 28N-20-1N TO BE AT 150' FSL, 137' FWL  
COYOTE TRAILS 28N-20-2C TO BE AT 150' FSL, 427' FWL  
COYOTE TRAILS 28N-20-3N TO BE AT 150' FSL, 718' FWL  
COYOTE TRAILS 28N-20-4N TO BE AT 150' FSL, 1008' FWL  
COYOTE TRAILS 28N-20-5C TO BE AT 150' FSL, 1298' FWL  
COYOTE TRAILS 28N-20-6N TO BE AT 150' FSL, 1588' FWL  
COYOTE TRAILS 28N-20-7N TO BE AT 150' FSL, 1878' FWL  
COYOTE TRAILS 28N-20-8C TO BE AT 150' FSL, 2168' FWL  
COYOTE TRAILS 28N-20-9N TO BE AT 150' FSL, 2458' FWL

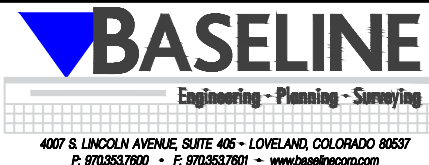
COYOTE TRAILS 28N-20-10N TO BE AT 150' FSL, 2594' FEL  
COYOTE TRAILS 28N-20-11C TO BE AT 150' FSL, 2304' FEL  
COYOTE TRAILS 28N-20-12N TO BE AT 150' FSL, 2014' FEL  
COYOTE TRAILS 28N-20-13N TO BE AT 150' FSL, 1724' FEL  
COYOTE TRAILS 28N-20-14C TO BE AT 150' FSL, 1434' FEL  
COYOTE TRAILS 28N-20-15N TO BE AT 150' FSL, 1144' FEL  
COYOTE TRAILS 28N-20-16N TO BE AT 150' FSL, 854' FEL  
COYOTE TRAILS 28N-20-17C TO BE AT 150' FSL, 574' FEL  
COYOTE TRAILS 28N-20-18N TO BE AT 150' FSL, 284' FEL

### LEGEND

- FOUND/SET SURVEY MONUMENT PER MONUMENT RECORD EXCEPTIONS NOTED.
- — CALCULATED SURVEY MONUMENT POSITION
- (C) — CALCULATED DIMENSION



DRAWN BY	RPM	CHECKED BY	AAD
INITIAL SUBMITTAL	7/7/2017		
REVISED	N/A		
DRAWING SIZE	8.5" X 11"		
JOB NO.	EXT01N68W28-01		
SHEET	2	OF	10





# MULTI WELL PLAN COYOTE TRAILS PAD

SW 1/4 SE 1/4, SECTION 28, TOWNSHIP 1 NORTH, RANGE 68 WEST

N 1/4 COR. SEC. 21

FOUND #6 REB.

W/ 2" A.C.

PLS 14083

NW COR. SEC. 21

FOUND #6 REB.

W/ 2-1/2" A.C.

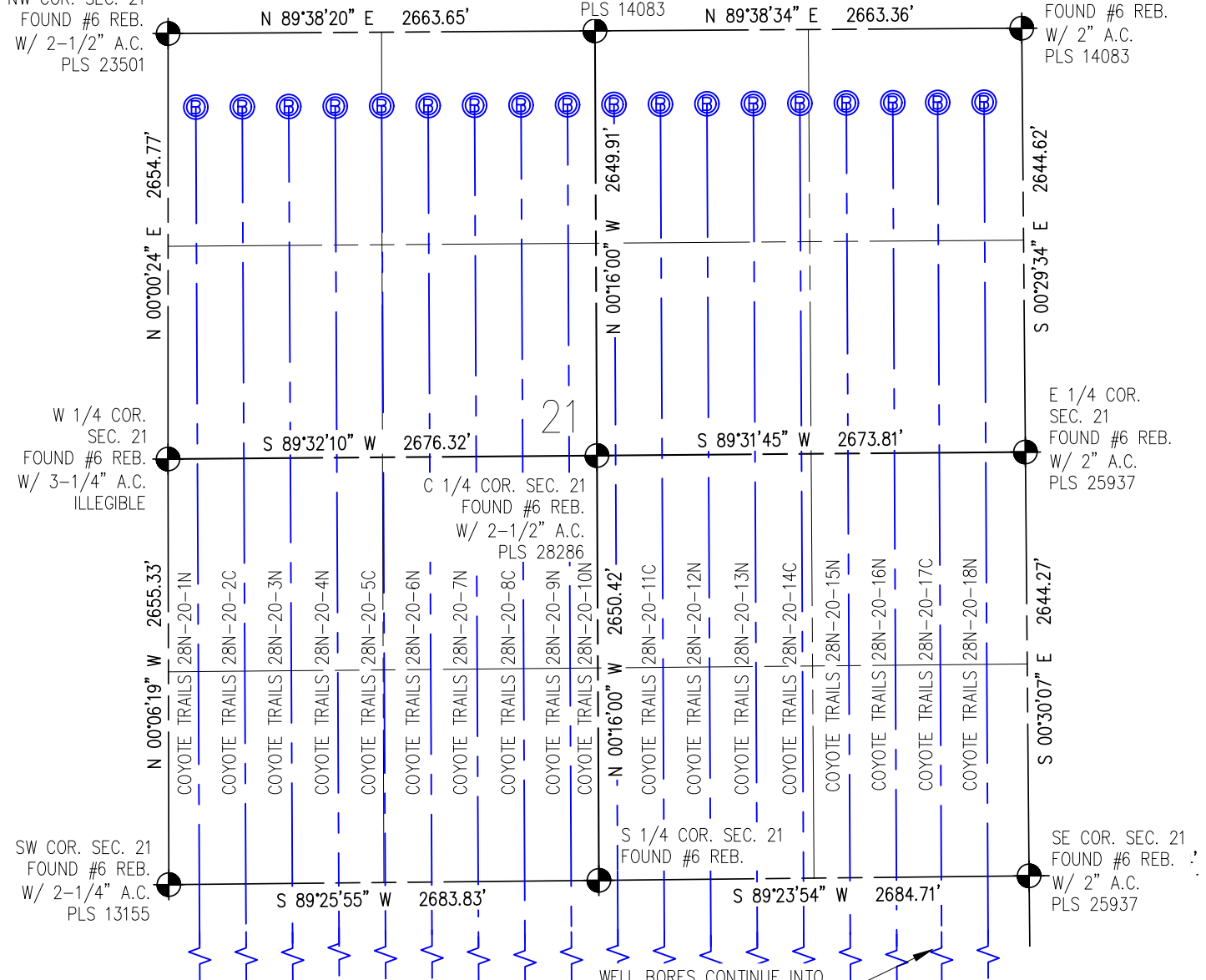
PLS 23501

NE COR. SEC. 21

FOUND #6 REB.

W/ 2" A.C.

PLS 14083



## NOTES (BOTTOM HOLES, SECTION 21, TOWNSHIP 1 NORTH, RANGE 68W):

COYOTE TRAILS 28N-20-1N TO BE AT 460' FNL, 173' FWL  
 COYOTE TRAILS 28N-20-2C TO BE AT 460' FNL, 463' FWL  
 COYOTE TRAILS 28N-20-3N TO BE AT 460' FNL, 753' FWL  
 COYOTE TRAILS 28N-20-4N TO BE AT 460' FNL, 1043' FWL  
 COYOTE TRAILS 28N-20-5C TO BE AT 460' FNL, 1333' FWL  
 COYOTE TRAILS 28N-20-6N TO BE AT 460' FNL, 1623' FWL  
 COYOTE TRAILS 28N-20-7N TO BE AT 460' FNL, 1913' FWL  
 COYOTE TRAILS 28N-20-8C TO BE AT 460' FNL, 2203' FWL  
 COYOTE TRAILS 28N-20-9N TO BE AT 460' FNL, 2493' FWL  
 COYOTE TRAILS 28N-20-10N TO BE AT 460' FNL, 2548' FEL  
 COYOTE TRAILS 28N-20-11C TO BE AT 460' FNL, 2259' FEL  
 COYOTE TRAILS 28N-20-12N TO BE AT 460' FNL, 1968' FEL

COYOTE TRAILS 28N-20-13N TO BE AT 460' FNL, 1679' FEL  
 COYOTE TRAILS 28N-20-14C TO BE AT 460' FNL, 1389' FEL  
 COYOTE TRAILS 28N-20-15N TO BE AT 460' FNL, 1099' FEL  
 COYOTE TRAILS 28N-20-16N TO BE AT 460' FNL, 809' FEL  
 COYOTE TRAILS 28N-20-17C TO BE AT 460' FNL, 529' FEL  
 COYOTE TRAILS 28N-20-18N TO BE AT 460' FNL, 239' FEL

N

0 1000  
Scale 1" = 1000 ft

## LEGEND

- - FOUND/SET SURVEY MONUMENT PER MONUMENT RECORD EXCEPTIONS NOTED.
- - CALCULATED SURVEY MONUMENT POSITION
- (C) - CALCULATED DIMENSION



DRAWN BY	RPM	CHECKED BY	AAD
INITIAL SUBMITTAL	7/7/2017	REVISED	N/A
DRAWING SIZE	8.5" X 11"	JOB NO.	EXT01N68W28-01
SHEET	3 OF 10		

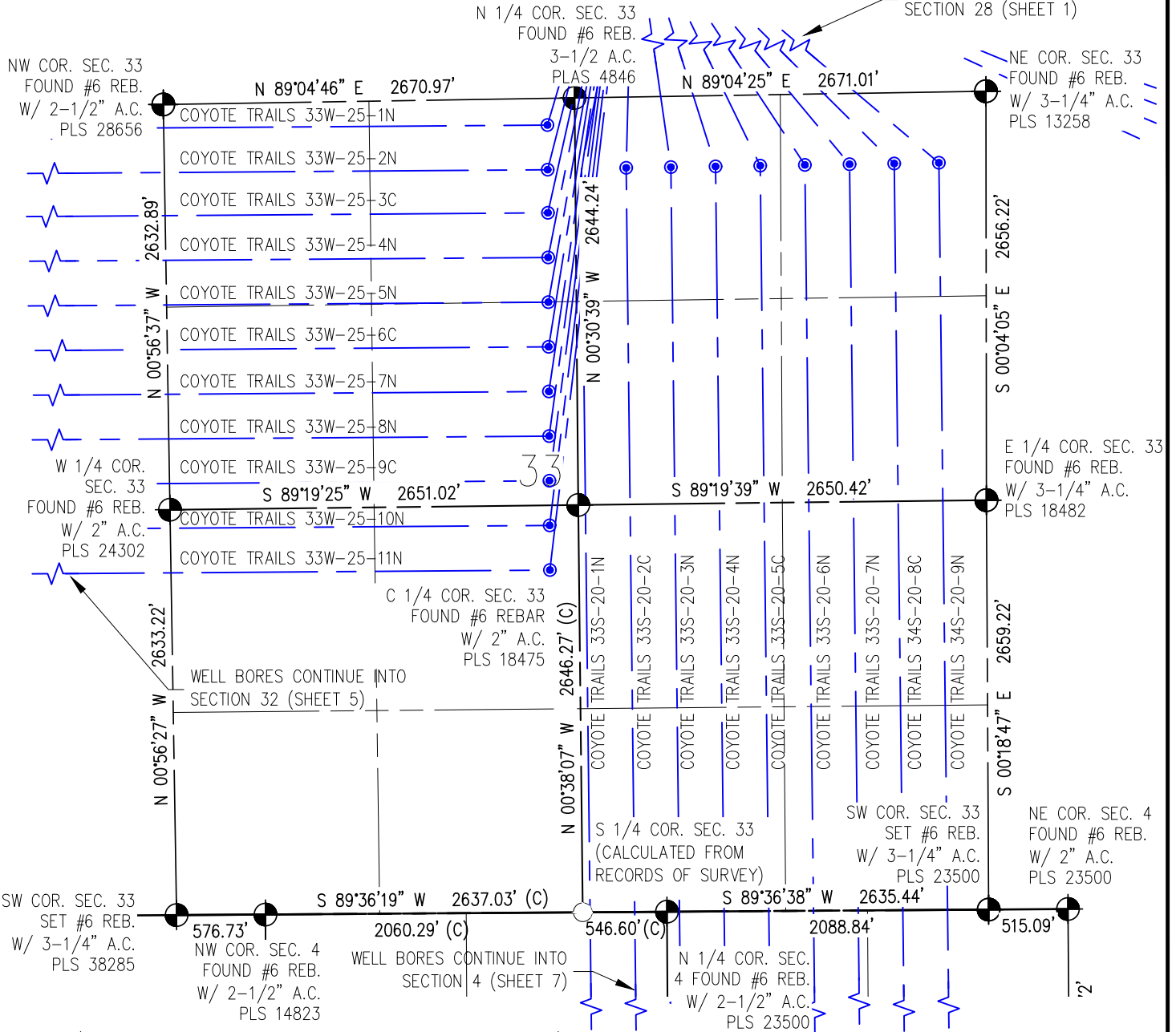
**BASELINE**  
 Engineering - Planning - Surveying  
 4007 S. LINCOLN AVENUE, SUITE 405 • LOVELAND, COLORADO 80537  
 P: 970.353.7600 • F: 970.353.7601 • www.baselinecorp.com



# MULTI WELL PLAN COYOTE TRAILS PAD

SW 1/4 SE 1/4, SECTION 28, TOWNSHIP 1 NORTH, RANGE 68 WEST

WELL BORES CONTINUE INTO  
SECTION 28 (SHEET 1)



## NOTES (ENTRY POINTS, SECTION 33, TOWNSHIP 1 NORTH, RANGE 68W):

COYOTE TRAILS 33W-25-1N TO BE AT 174' FNL, 2492' FWL  
 COYOTE TRAILS 33W-25-2N TO BE AT 464' FNL, 2488' FWL  
 COYOTE TRAILS 33W-25-3C TO BE AT 744' FNL, 2485' FWL  
 COYOTE TRAILS 33W-25-4N TO BE AT 1034' FNL, 2482' FWL  
 COYOTE TRAILS 33W-25-5N TO BE AT 1324' FNL, 2479' FWL  
 COYOTE TRAILS 33W-25-6C TO BE AT 1614' FNL, 2476' FWL  
 COYOTE TRAILS 33W-25-7N TO BE AT 1904' FNL, 2473' FWL  
 COYOTE TRAILS 33W-25-8N TO BE AT 2194' FNL, 2470' FWL  
 COYOTE TRAILS 33W-25-9C TO BE AT 2484' FNL, 2466' FWL  
 COYOTE TRAILS 33W-25-10N TO BE AT 2514' FSL, 2463' FWL  
 COYOTE TRAILS 33W-25-11N TO BE AT 2224' FSL, 2460' FWL

COYOTE TRAILS 33S-20-1N TO BE AT 460' FNL, 2626' FEL  
 COYOTE TRAILS 33S-20-2C TO BE AT 460' FNL, 2336' FEL  
 COYOTE TRAILS 33S-20-3N TO BE AT 460' FNL, 2046' FEL  
 COYOTE TRAILS 33S-20-4N TO BE AT 460' FNL, 1756' FEL  
 COYOTE TRAILS 33S-20-5C TO BE AT 460' FNL, 1466' FEL  
 COYOTE TRAILS 33S-20-6N TO BE AT 460' FNL, 1176' FEL  
 COYOTE TRAILS 33S-20-7N TO BE AT 460' FNL, 886' FEL  
 COYOTE TRAILS 34S-20-8C TO BE AT 460' FNL, 596' FEL  
 COYOTE TRAILS 34S-20-9N TO BE AT 460' FNL, 306' FEL

## LEGEND

- - FOUND/SET SURVEY MONUMENT PER MONUMENT RECORD EXCEPTIONS NOTED.
- - CALCULATED SURVEY MONUMENT POSITION
- (C) - CALCULATED DIMENSION



DRAWN BY	RPM	CHECKED BY	AAD
INITIAL SUBMITTAL	7/7/2017	REVISED	N/A
DRAWING SIZE	8.5" X 11"	JOB NO.	EXT01N68W28-01
SHEET	4 OF 10		

**BASELINE**  
Engineering - Planning - Surveying

4007 S. LINCOLN AVENUE, SUITE 405 • LOVELAND, COLORADO 80537  
P: 970.353.7600 • F: 970.353.7601 • www.baselinecorp.com



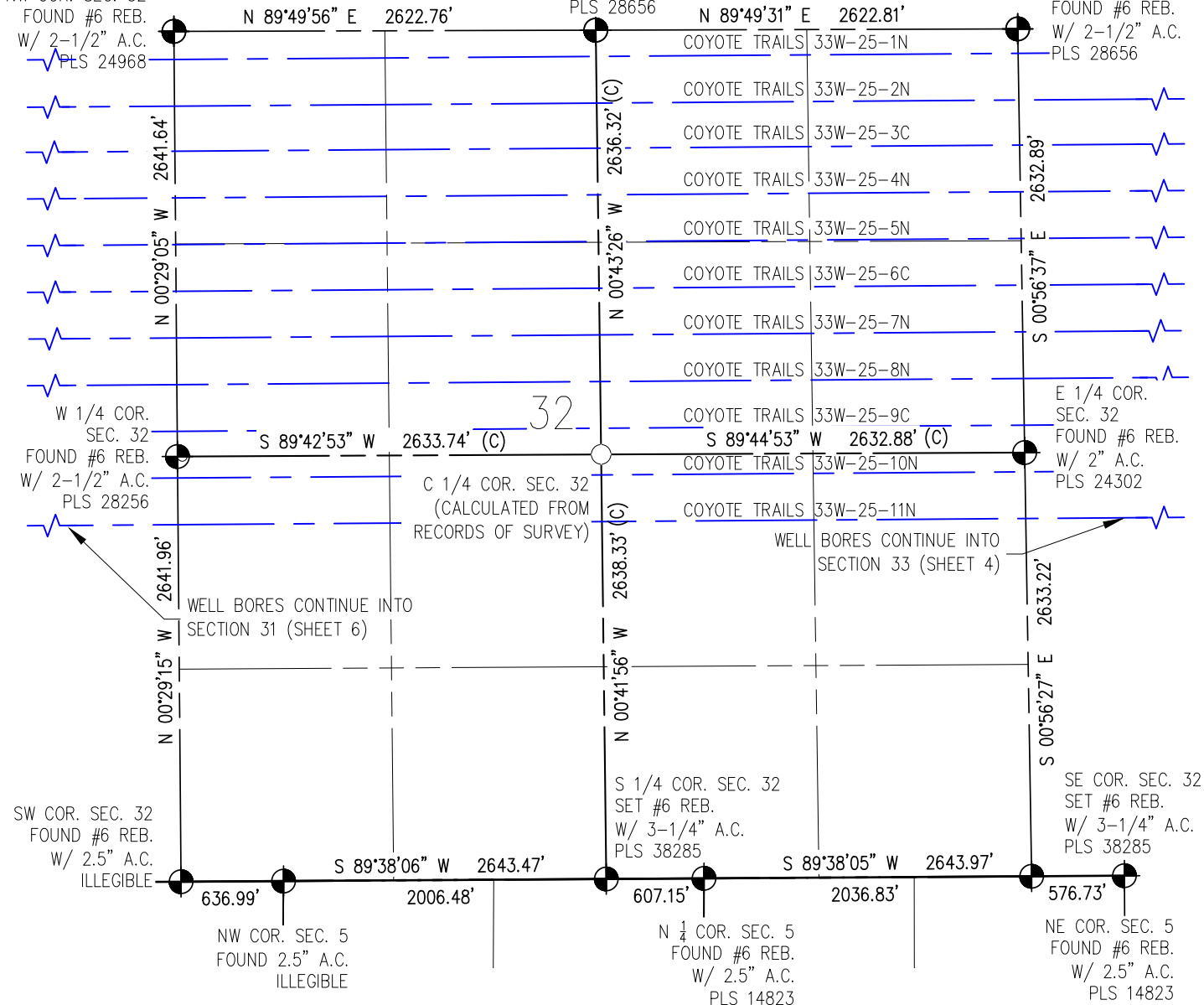
# MULTI WELL PLAN COYOTE TRAILS PAD

SW 1/4 SE 1/4, SECTION 28, TOWNSHIP 1 NORTH, RANGE 68 WEST

N 1/4 COR. SEC. 32  
FOUND #6 REB.  
W/ 3-1/4" A.C.  
PLS 28656

NW COR. SEC. 32  
FOUND #6 REB.  
W/ 2-1/2" A.C.  
PLS 24968

NE COR. SEC. 32  
FOUND #6 REB.  
W/ 2-1/2" A.C.  
PLS 28656



## LEGEND

- - FOUND/SET SURVEY MONUMENT PER MONUMENT RECORD EXCEPTIONS NOTED.
- - CALCULATED SURVEY MONUMENT POSITION
- (C) - CALCULATED DIMENSION



DRAWN BY	RPM	CHECKED BY	AAD
INITIAL SUBMITTAL	7/7/2017	REVISED	N/A
DRAWING SIZE	8.5" X 11"	JOB NO.	EXT01N68W28-01
SHEET	5	OF	10

**BASELINE**  
Engineering - Planning - Surveying

4007 S. LINCOLN AVENUE, SUITE 405 • LOVELAND, COLORADO 80537  
P: 970.353.7600 • F: 970.353.7601 • www.baselinecorp.com



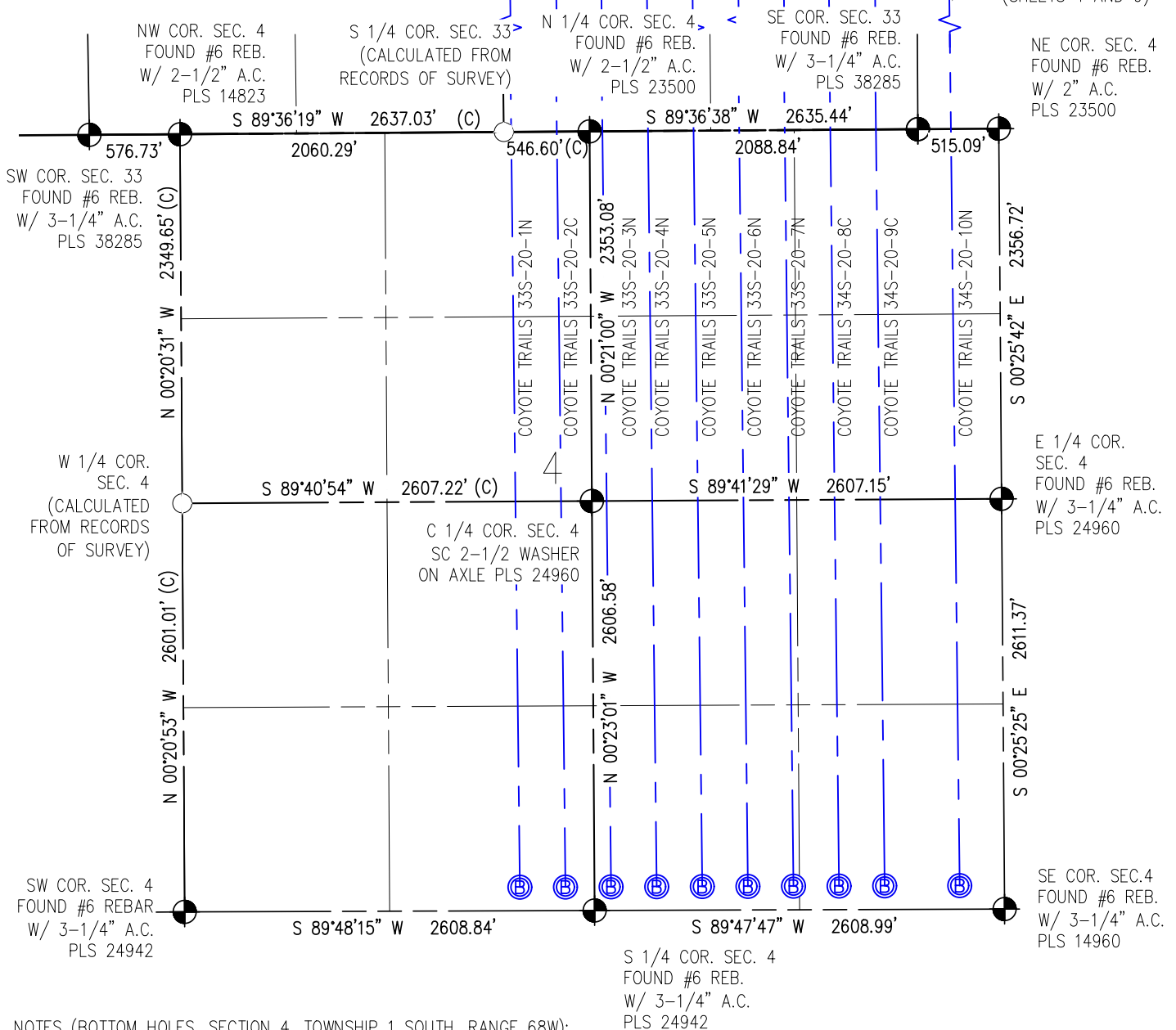
M:\co - Well Head Staking\EXT01N68W28-01 (FRONT RANGE)\Drawings\EXT01N68W28-01 (COYOTE TRAILS) - 2A.dwg, 7/7/2017 7:34:08 PM, Ryan McAdams



# MULTI WELL PLAN COYOTE TRAILS PAD

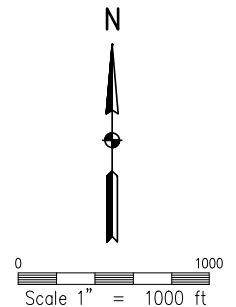
SW 1/4 SE 1/4, SECTION 28, TOWNSHIP 1 NORTH, RANGE 68 WEST

WELL BORES CONTINUE  
INTO SECTIONS  
33 AND 34  
(SHEETS 4 AND 9)



## NOTES (BOTTOM HOLES, SECTION 4, TOWNSHIP 1 SOUTH, RANGE 68W):

COYOTE TRAILS 33S-20-1N TO BE AT 150' FSL, 2134' FWL  
COYOTE TRAILS 33S-20-2C TO BE AT 150' FSL, 2424' FWL  
COYOTE TRAILS 33S-20-3N TO BE AT 150' FSL, 2503' FEL  
COYOTE TRAILS 33S-20-4N TO BE AT 150' FSL, 2213' FEL  
COYOTE TRAILS 33S-20-5C TO BE AT 150' FSL, 1923' FEL  
COYOTE TRAILS 33S-20-6N TO BE AT 150' FSL, 1632' FEL  
COYOTE TRAILS 33S-20-7N TO BE AT 150' FSL, 1342' FEL  
COYOTE TRAILS 34S-20-8C TO BE AT 150' FSL, 1052' FEL  
COYOTE TRAILS 34S-20-9N TO BE AT 150' FSL, 762' FEL  
COYOTE TRAILS 34S-20-10N TO BE AT 150' FSL, 285' FEL



## LEGEND

- - FOUND/SET SURVEY MONUMENT PER MONUMENT RECORD EXCEPTIONS NOTED.
- - CALCULATED SURVEY MONUMENT POSITION
- (C) - CALCULATED DIMENSION



DRAWN BY RPM	CHECKED BY AAD
INITIAL SUBMITTAL 7/7/2017	REVISED N/A
DRAWING SIZE 8.5" X 11"	JOB NO. EXT01N68W28-01
SHEET 7 OF 10	

**BASLINE**  
Engineering - Planning - Surveying

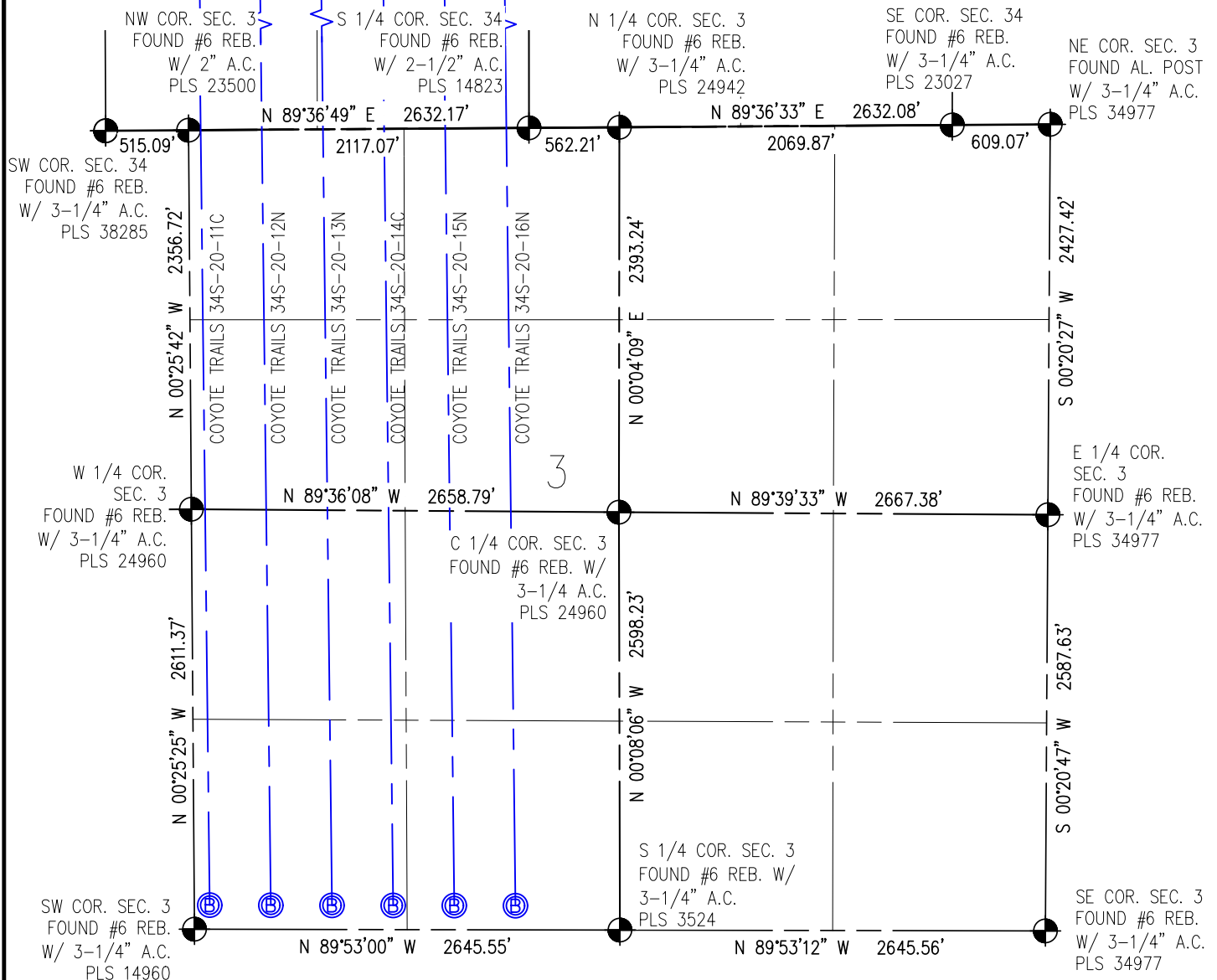
4007 S. LINCOLN AVENUE, SUITE 405 • LOVELAND, COLORADO 80537  
P: 970.353.7600 • F: 970.353.7601 • www.baselinecorp.com



# MULTI WELL PLAN COYOTE TRAILS PAD

WELL BORES CONTINUE INTO  
SECTION 34 (SHEET 9)

SW 1/4 SE 1/4, SECTION 28, TOWNSHIP 1 NORTH, RANGE 68 WEST



## NOTES (BOTTOM HOLES, SECTION 3, TOWNSHIP 1 SOUTH, RANGE 68W):

COYOTE TRAILS 34S-20-11C TO BE AT 150' FSL, 96' FWL  
 COYOTE TRAILS 34S-20-12N TO BE AT 150' FSL, 476' FWL  
 COYOTE TRAILS 34S-20-13N TO BE AT 150' FSL, 856' FWL  
 COYOTE TRAILS 34S-20-14C TO BE AT 150' FSL, 1236' FWL  
 COYOTE TRAILS 34S-20-15N TO BE AT 150' FSL, 1617' FWL  
 COYOTE TRAILS 34S-20-16N TO BE AT 150' FSL, 1997' FWL



0 1000  
Scale 1" = 1000 ft

## LEGEND

- - FOUND/SET SURVEY MONUMENT PER MONUMENT RECORD EXCEPTIONS NOTED.
- - CALCULATED SURVEY MONUMENT POSITION
- (C) - CALCULATED DIMENSION



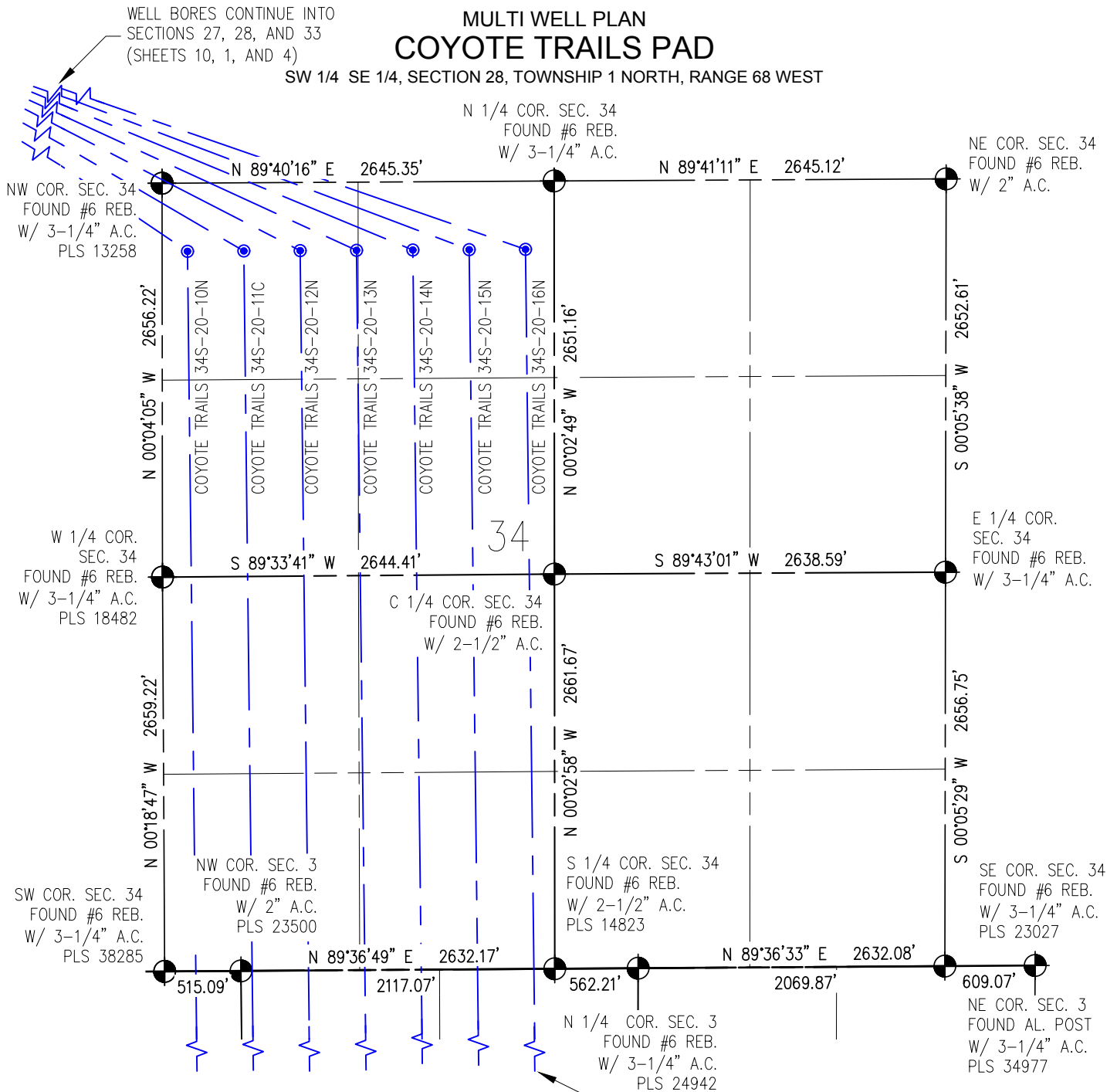
DRAWN BY	RPM	CHECKED BY	AAD
INITIAL SUBMITTAL	7/7/2017	REVISED	N/A
DRAWING SIZE	8.5" X 11"	JOB NO.	EXT01N68W28-01
SHEET	8 OF 1001		

**BASELINE**  
 Engineering - Planning - Surveying  
 4007 S. LINCOLN AVENUE, SUITE 405 • LOVELAND, COLORADO 80537  
 P: 970.353.7600 • F: 970.353.7601 • www.baselinecorp.com



# MULTI WELL PLAN COYOTE TRAILS PAD

SW 1/4 SE 1/4, SECTION 28, TOWNSHIP 1 NORTH, RANGE 68 WEST



## NOTES (ENTRY POINTS, SECTION 34, TOWNSHIP 1 NORTH, RANGE 68W):

COYOTE TRAILS 34S-20-10N TO BE AT 460' FNL, 171' FWL  
 COYOTE TRAILS 34S-20-11C TO BE AT 460' FNL, 551' FWL  
 COYOTE TRAILS 34S-20-12N TO BE AT 460' FNL, 931' FWL  
 COYOTE TRAILS 34S-20-13N TO BE AT 460' FNL, 1311' FWL  
 COYOTE TRAILS 34S-20-14C TO BE AT 460' FNL, 1692' FWL  
 COYOTE TRAILS 34S-20-15N TO BE AT 460' FNL, 2072' FWL  
 COYOTE TRAILS 34S-20-16N TO BE AT 460' FNL, 2452' FWL

WELL BORES CONTINUE INTO SECTIONS 3 AND 4 (SHEETS 8 AND 7)



0 1000  
Scale 1" = 1000 ft

## LEGEND

- - FOUND/SET SURVEY MONUMENT PER MONUMENT RECORD EXCEPTIONS NOTED.
- - CALCULATED SURVEY MONUMENT POSITION
- (C) - CALCULATED DIMENSION



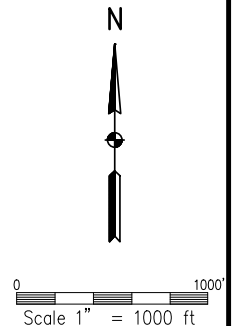
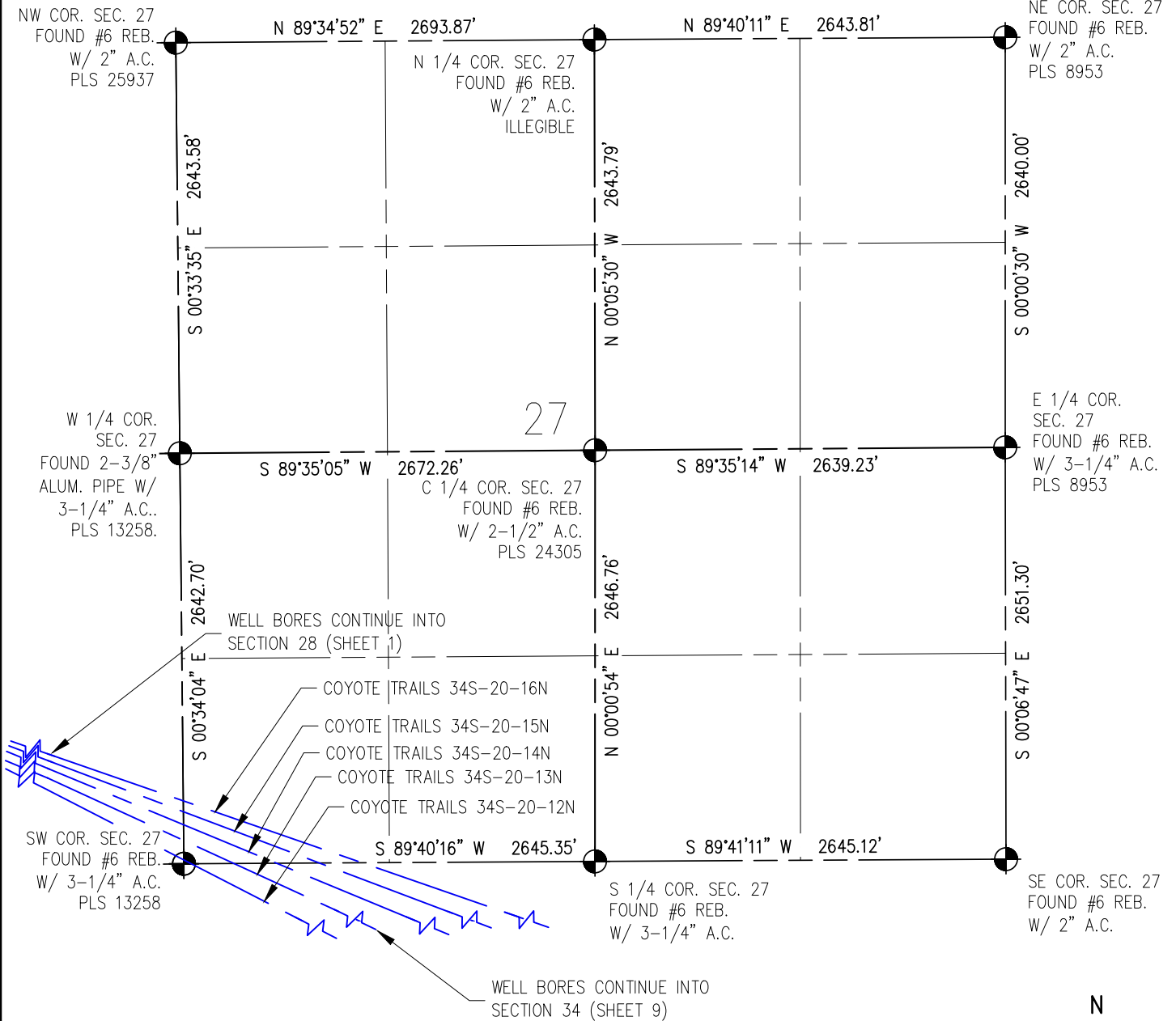
DRAWN BY	RPM	CHECKED BY	AAD
INITIAL SUBMITTAL	7/7/2017		
REVISED	N/A		
DRAWING SIZE	8.5" X 11"		
JOB NO.	EXT01N68W28-01		
SHEET	9 OF 10		

**BASLINE**  
 Engineering - Planning - Surveying  
 4007 S. LINCOLN AVENUE, SUITE 405 • LOVELAND, COLORADO 80537  
 P: 970.353.7600 • F: 970.353.7601 • www.baselinecorp.com



# MULTI WELL PLAN COYOTE TRAILS PAD

SW 1/4 SE 1/4, SECTION 28, TOWNSHIP 1 NORTH, RANGE 68 WEST



## LEGEND

- - FOUND/SET SURVEY MONUMENT PER MONUMENT RECORD EXCEPTIONS NOTED.
- - CALCULATED SURVEY MONUMENT POSITION
- (C) - CALCULATED DIMENSION



DRAWN BY	RPM	CHECKED BY	AAD
INITIAL SUBMITTAL	7/7/2017	REVISED	N/A
DRAWING SIZE	8.5" X 11"	JOB NO.	EXT01N68W28-01
SHEET	10 OF 10		

**BASELINE**  
Engineering - Planning - Surveying

4007 S. LINCOLN AVENUE, SUITE 405 • LOVELAND, COLORADO 80537  
P: 970.353.7600 • F: 970.353.7601 • www.baselinecorp.com