

Inspection Photos

8/14/2017

Operator: PDC ENERGY INC - 69175

Location ID: 319218

Inspection Doc. Number: 675103830

Weld County, CO

Aaron Trujillo
NE Reclamation Specialist
COGCC



Photo 1: Photo taken from the west end of the location, facing south. Photo shows no additional BMPs have been implemented and used in conjunction with surface roughening per CA's from inspection doc. #682502162



Photo 2: Photo taken from the west end of the location, facing east. Photo shows no additional BMPs have been implemented and used in conjunction with surface roughening per CA's from inspection doc. #682502162



Photo 3: Photo taken from the west end of the location, facing north. Photo shows no additional BMPs have been implemented and used in conjunction with surface roughening per CA's from inspection doc. #682502162

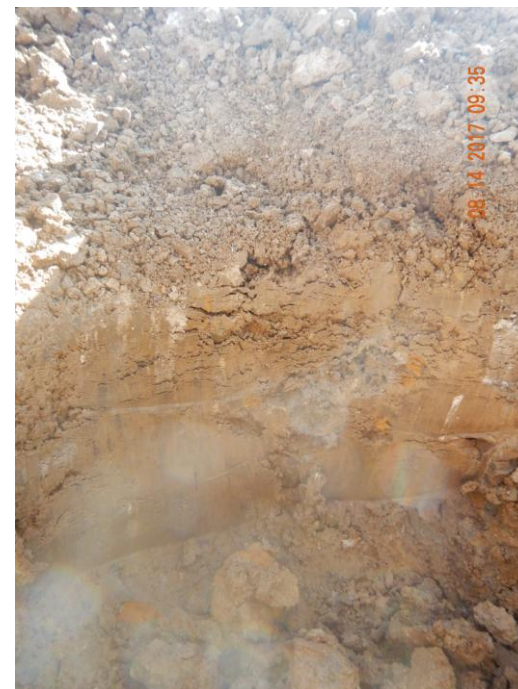


Photo 4: Photo taken from the location. Photo shows soil profiles from a compaction test pit. Photo shows compaction concerns remain . Depth at the bottom of the photo seen here is ~8 inches from surface.