



February 13, 2017

Mr. Mike Dinkel, REM, CSEM
Kerr-McGee Oil & Gas Onshore LP
1099 18th Street, Suite 1800
Denver, Colorado 80202

**RE: Colorado Oil & Gas Conservation Commission (COGCC)
Form 4 (Interim Reclamation Completion Notice)
SEKICH STATE 16N-17HZ (329869)
Kerr-McGee Oil & Gas Onshore LP (Operator: 47120)**

Dear Mr. Dinkel:

Apex Companies, LLC (Apex) is pleased to present this letter to Kerr-McGee Oil & Gas Onshore LP (Kerr-McGee) documenting successful completion of interim reclamation efforts per COGCC Rule 1003 on the location specified above in Weld County, Colorado. Attached is a topographic map, which identifies the referenced location.

Based on communications with Kerr-McGee personnel and subsequent site inspections, Apex personnel confirmed that the unused portions of the reduced production footprint have been regraded and returned by the landowner to crop land and agricultural use. Based on this result, interim reclamation as defined by COGCC Rule 1003.e (1) has been achieved. Photographs required by Rule 1003.e (3) are also attached along with a diagram illustrating photo origins.

Apex appreciates the opportunity to provide environmental consulting services to Kerr-McGee with this project. Should you have any questions or require additional information, please don't hesitate to contact me.

Sincerely,
Apex Companies, LLC

A handwritten signature in black ink, appearing to read 'Chris Hines'.

Chris Hines
Project Manager
970-261-1127
chris.hines@apexcos.com

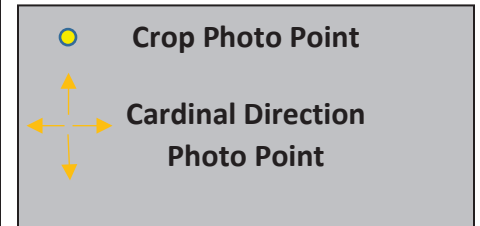
Attachments:

1. Vegetation Survey Map
2. Topographic Location Map
3. Inspection Photos



Vegetation Survey Map

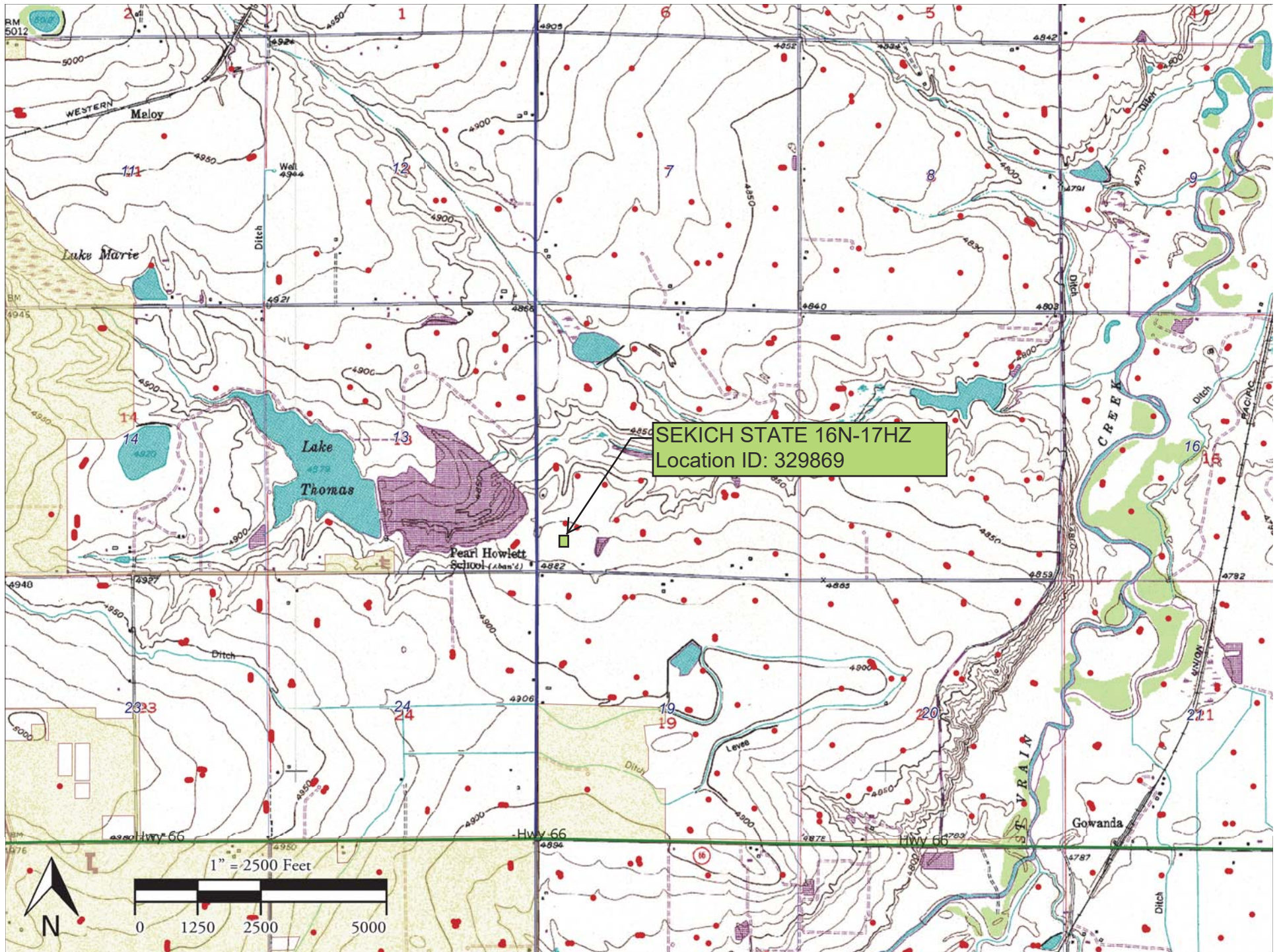
SEKICH STATE 16N-17HZ
(329869)



Legal Description: SWSW, Sec 18,
T3N-R67W
County: Weld
Land Use: Crop Land
Inspector: Jennie Schoedel
Inspection Date: 07/14/2016



SEKICH STATE 16N-17HZ (329869) Topographical Location Map



**Kerr-McGee Oil & Gas Onshore LP
Form 4 (Interim Reclamation Completion Notice)
SEKICH STATE 16N-17HZ (329869)**

Vegetation Assessment
Completed (07/14/2016)





Crop Photo Point
40.220915/-104.939921