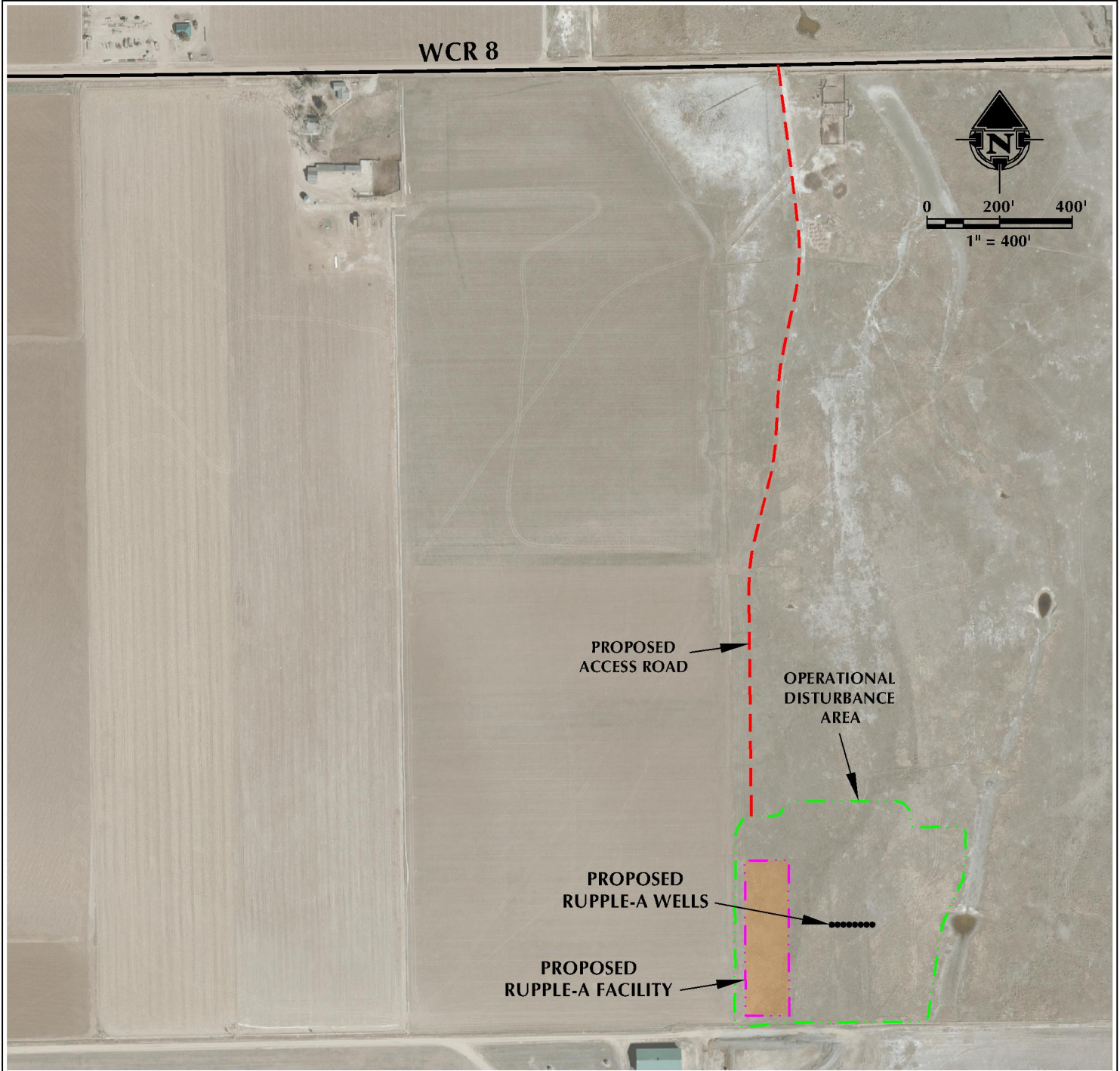


RUPPLE-A ACCESS MAP

SW1/4 NE1/4 SECTION 19, TOWNSHIP 1 NORTH, RANGE 64 WEST, 6TH P.M.



LEGEND

- PROPOSED WELL
- - - PROPOSED ACCESS ROAD
- PROPOSED FACILITY
- - - OPERATIONAL DISTURBANCE AREA
- EXISTING COUNTY ROAD



609 CONSULTING, LLC
LOVELAND OFFICE
1615 Foxtrail Drive, Suite 204
Loveland, Colorado 80538
Phone 970-776-4331

SHERIDAN OFFICE
1095 Saberton Avenue
Sheridan, Wyoming 82801
Phone 307-674-0609

DATE SURVEYED: 2/25/17
DATE: 3/7/17
DRAFTER: CDR
REVISED: 8/8/17

DATA SOURCES:
- AERIAL COURTESY OF ESRI, INC.

PREPARED FOR:
Anschutz Oil Company

RUPPLE-A ACCESS MAP (WOGLA)

SW1/4 NE1/4 SECTION 19, TOWNSHIP 1 NORTH, RANGE 64 WEST, 6TH P.M.



LEGEND

- PROPOSED WELL
- - - PROPOSED ACCESS ROUTE
- PROPOSED FACILITY
- - - OPERATIONAL DISTURBANCE AREA



609 CONSULTING, LLC
LOVELAND OFFICE
1615 Foxtrail Drive, Suite 204
Loveland, Colorado 80538
Phone 970-776-4331

SHERIDAN OFFICE
1095 Saberton Avenue
Sheridan, Wyoming 82801
Phone 307-674-0609

DATE SURVEYED: 2/25/17
DATE: 3/7/17
DRAFTER: CDR
REVISED: 8/8/17

DATA SOURCES:
- AERIAL COURTESY OF ESRI, INC.

PREPARED FOR:
Anschutz Oil Company