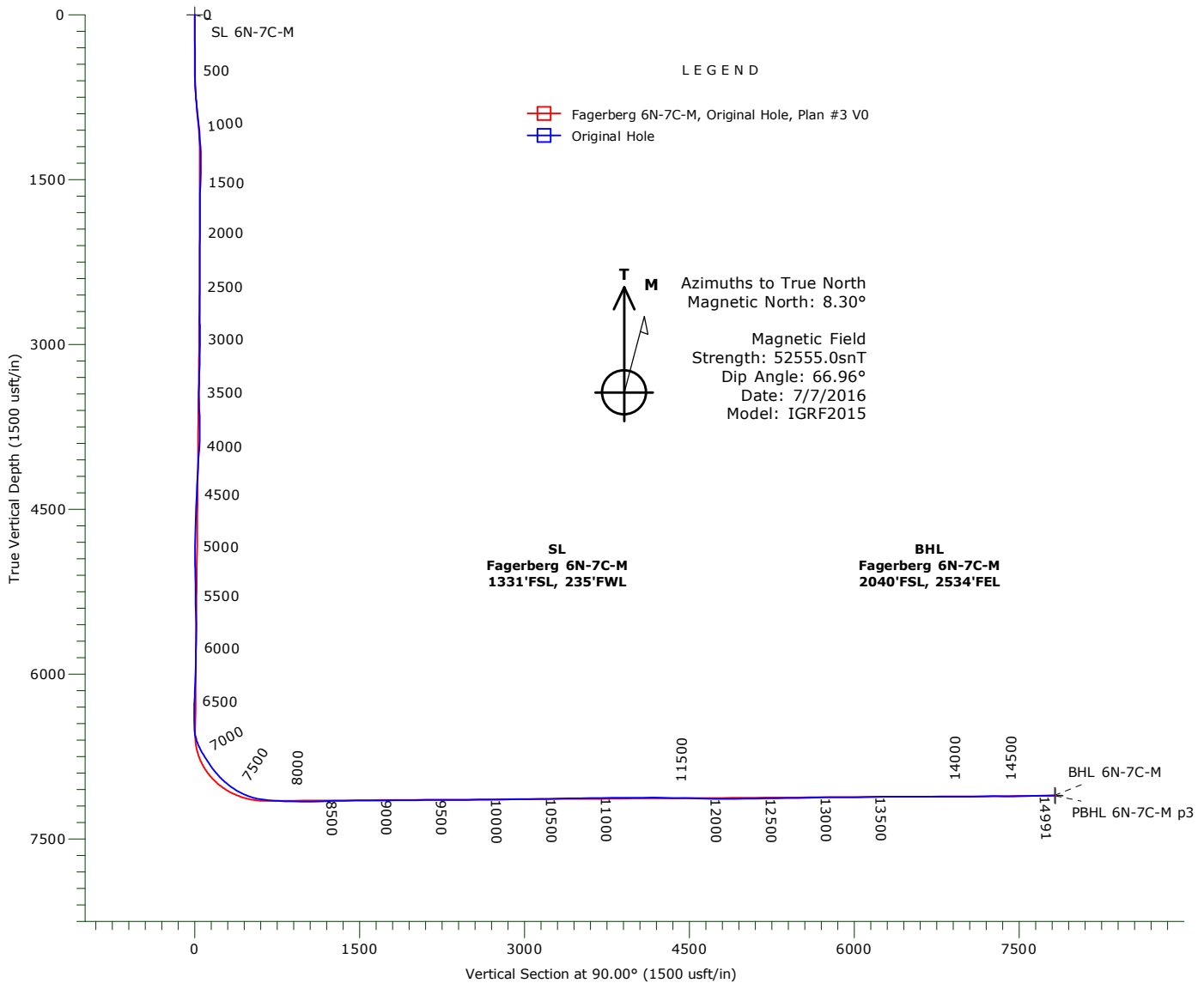
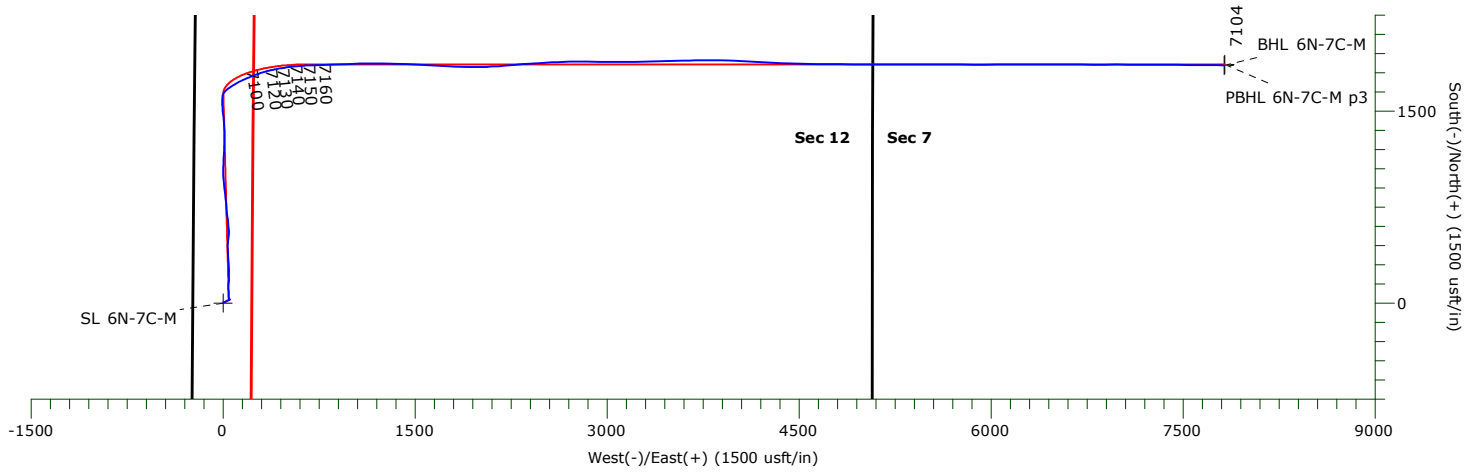




**SYNERGY RESOURCES CORP.**  
**Project: Weld County, CO NAD 83**  
**Site: SRC Fagerberg 33-12 Pad**  
**Well: Fagerberg 6N-7C-M**  
**Wellbore: Original Hole**  
**Design: Original Hole**



**WELLBORE TARGET DETAILS**

Name	TVD	+N/-S	+E/-W	Northing	Easting	Latitude	Longitude	Shape
SL 6N-7C-M	0.00	0.00	0.00	1425627.89	3212989.82	40.499225°N	104.734123°W	Point
BHL 6N-7C-M	7103.71	1857.74	7822.18	1427553.12	3220795.67	40.504321°N	104.705994°W	Point
PBHL 6N-7C-M p3	7107.45	1864.73	7828.00	1427560.16	3220801.43	40.504340°N	104.705973°W	Point

# **SYNERGY RESOURCES CORP.**

**Weld County, CO NAD 83  
SRC Fagerberg 33-12 Pad  
Fagerberg 6N-7C-M**

**Original Hole**

**Design: Original Hole**

## **Standard Survey Report**

**24 August, 2016**

# Precision Drilling Corporation

## Survey Report

<b>Company:</b>	SYNERGY RESOURCES CORP.	<b>Local Co-ordinate Reference:</b>	Well Fagerberg 6N-7C-M
<b>Project:</b>	Weld County, CO NAD 83	<b>TVD Reference:</b>	4800'GL+20'KB @ 4820.00usft (PD 462)
<b>Site:</b>	SRC Fagerberg 33-12 Pad	<b>MD Reference:</b>	4800'GL+20'KB @ 4820.00usft (PD 462)
<b>Well:</b>	Fagerberg 6N-7C-M	<b>North Reference:</b>	True
<b>Wellbore:</b>	Original Hole	<b>Survey Calculation Method:</b>	Minimum Curvature
<b>Design:</b>	Original Hole	<b>Database:</b>	COMPASS_ROCKIES

<b>Project</b>	Weld County, CO NAD 83		
<b>Map System:</b>	US State Plane 1983	<b>System Datum:</b>	Mean Sea Level
<b>Geo Datum:</b>	North American Datum 1983		
<b>Map Zone:</b>	Colorado Northern Zone		

<b>Site</b>	SRC Fagerberg 33-12 Pad		
<b>Site Position:</b>		<b>Northing:</b>	1,425,367.82 usft
<b>From:</b>	Lat/Long	<b>Easting:</b>	3,212,990.13 usft
<b>Position Uncertainty:</b>	0.00 usft	<b>Slot Radius:</b>	13.20 in
		<b>Latitude:</b>	40.498511°N
		<b>Longitude:</b>	104.734130°W
		<b>Grid Convergence:</b>	0.49 °

<b>Well</b>	Fagerberg 6N-7C-M		
<b>Well Position</b>	<b>+N-S</b>	0.00 usft	<b>Northing:</b>
	<b>+E-W</b>	0.00 usft	<b>Easting:</b>
<b>Position Uncertainty</b>	3.28 usft	<b>Wellhead Elevation:</b>	0.00 usft
		<b>Latitude:</b>	40.499225°N
		<b>Longitude:</b>	104.734123°W
		<b>Ground Level:</b>	4,800.00 usft

<b>Wellbore</b>	Original Hole		
<b>Magnetics</b>	<b>Model Name</b>	<b>Sample Date</b>	<b>Declination (°)</b>
	IGRF2015	7/7/2016	8.30
			<b>Dip Angle (°)</b>
			66.96
			<b>Field Strength (nT)</b>
			52,555

<b>Design</b>	Original Hole		
<b>Audit Notes:</b>			
<b>Version:</b>	1.0	<b>Phase:</b>	ACTUAL
		<b>Tie On Depth:</b>	0.00
<b>Vertical Section:</b>	<b>Depth From (TVD) (usft)</b>	<b>+N-S (usft)</b>	<b>+E-W (usft)</b>
	0.00	0.00	0.00
			<b>Direction (°)</b>
			90.00

<b>Survey Program</b>	<b>Date</b> 8/24/2016		
<b>From (usft)</b>	<b>To (usft)</b>	<b>Survey (Wellbore)</b>	<b>Tool Name</b>
229.00	14,935.00	Survey #1 (Original Hole)	MWD
14,991.00	14,991.00	Survey #2 (Original Hole)	BLIND
			<b>Description</b>
			Fixed:v2:standard declination
			OWSG BLIND

<b>Survey</b>										
<b>Measured Depth (usft)</b>	<b>Inclination (°)</b>	<b>Azimuth (°)</b>	<b>Vertical Depth (usft)</b>	<b>+N-S (usft)</b>	<b>+E-W (usft)</b>	<b>Vertical Section (usft)</b>	<b>Dogleg Rate (°/100usft)</b>	<b>Build Rate (°/100usft)</b>	<b>Turn Rate (°/100usft)</b>	
0.00	0.00	0.00	0.00	0.00	0.00	0.00	0.00	0.00	0.00	
229.00	2.37	3.38	228.93	4.73	0.28	0.28	1.03	1.03	0.00	
322.00	1.67	15.33	321.88	7.95	0.75	0.75	0.87	-0.75	12.85	
415.00	0.53	177.40	414.87	8.83	1.13	1.13	2.34	-1.23	174.27	
508.00	1.49	158.94	507.85	7.27	1.58	1.58	1.08	1.03	-19.85	
601.00	1.32	93.38	600.83	6.08	3.09	3.09	1.64	-0.18	-70.49	
694.00	2.99	73.34	693.76	6.71	6.48	6.48	1.94	1.80	-21.55	
788.00	5.28	65.78	787.51	9.19	12.77	12.77	2.50	2.44	-8.04	
881.00	7.12	64.90	879.96	13.39	21.90	21.90	1.98	1.98	-0.95	
974.00	6.51	68.07	972.31	17.81	32.01	32.01	0.77	-0.66	3.41	

# Precision Drilling Corporation

## Survey Report

<b>Company:</b>	SYNERGY RESOURCES CORP.	<b>Local Co-ordinate Reference:</b>	Well Fagerberg 6N-7C-M
<b>Project:</b>	Weld County, CO NAD 83	<b>TVD Reference:</b>	4800'GL+20'KB @ 4820.00usft (PD 462)
<b>Site:</b>	SRC Fagerberg 33-12 Pad	<b>MD Reference:</b>	4800'GL+20'KB @ 4820.00usft (PD 462)
<b>Well:</b>	Fagerberg 6N-7C-M	<b>North Reference:</b>	True
<b>Wellbore:</b>	Original Hole	<b>Survey Calculation Method:</b>	Minimum Curvature
<b>Design:</b>	Original Hole	<b>Database:</b>	COMPASS_ROCKIES

### Survey

Measured Depth (usft)	Inclination (°)	Azimuth (°)	Vertical Depth (usft)	+N/-S (usft)	+E/-W (usft)	Vertical Section (usft)	Dogleg Rate (°/100usft)	Build Rate (°/100usft)	Turn Rate (°/100usft)
1,067.00	5.54	71.58	1,064.79	21.19	41.16	41.16	1.12	-1.04	3.77
1,159.00	4.22	63.32	1,156.46	24.12	48.39	48.39	1.62	-1.43	-8.98
1,253.00	2.46	63.67	1,250.29	26.56	53.29	53.29	1.87	-1.87	0.37
1,346.00	1.06	357.23	1,343.25	28.31	55.04	55.04	2.43	-1.51	-71.44
1,440.00	1.67	271.97	1,437.23	29.22	53.63	53.63	2.02	0.65	-90.70
1,533.00	2.11	255.45	1,530.18	28.84	50.62	50.62	0.75	0.47	-17.76
1,627.00	0.79	255.27	1,624.15	28.24	48.32	48.32	1.40	-1.40	-0.19
1,703.00	0.35	265.47	1,700.15	28.09	47.58	47.58	0.59	-0.58	13.42
1,836.00	0.62	351.07	1,833.14	28.77	47.06	47.06	0.52	0.20	64.36
1,929.00	2.11	347.91	1,926.12	30.94	46.62	46.62	1.60	1.60	-3.40
2,022.00	3.08	354.94	2,019.02	35.10	46.05	46.05	1.10	1.04	7.56
2,116.00	4.92	355.29	2,112.79	41.64	45.49	45.49	1.96	1.96	0.37
2,209.00	6.24	354.59	2,205.34	50.64	44.69	44.69	1.42	1.42	-0.75
2,302.00	8.27	359.16	2,297.60	62.36	44.11	44.11	2.27	2.18	4.91
2,394.00	9.15	358.98	2,388.53	76.29	43.89	43.89	0.96	0.96	-0.20
2,487.00	10.38	358.63	2,480.18	92.06	43.55	43.55	1.32	1.32	-0.38
2,581.00	11.96	356.70	2,572.40	110.25	42.79	42.79	1.73	1.68	-2.05
2,675.00	15.39	2.67	2,663.73	132.45	42.81	42.81	3.94	3.65	6.35
2,768.00	18.99	3.73	2,752.56	159.88	44.37	44.37	3.89	3.87	1.14
2,861.00	23.13	1.44	2,839.33	193.26	45.82	45.82	4.54	4.45	-2.46
2,954.00	25.24	1.27	2,924.16	231.34	46.71	46.71	2.27	2.27	-0.18
3,048.00	23.74	357.58	3,009.71	270.29	46.36	46.36	2.28	-1.60	-3.93
3,142.00	22.34	357.05	3,096.21	307.04	44.64	44.64	1.51	-1.49	-0.56
3,235.00	22.86	356.35	3,182.07	342.72	42.58	42.58	0.63	0.56	-0.75
3,330.00	20.75	356.70	3,270.26	377.94	40.44	40.44	2.23	-2.22	0.37
3,424.00	19.52	356.35	3,358.52	410.23	38.48	38.48	1.31	-1.31	-0.37
3,517.00	18.11	357.93	3,446.55	440.19	36.97	36.97	1.61	-1.52	1.70
3,610.00	17.32	6.54	3,535.15	468.39	38.02	38.02	2.94	-0.85	9.26
3,703.00	19.17	7.77	3,623.47	497.27	41.66	41.66	2.03	1.99	1.32
3,797.00	21.02	3.20	3,711.75	529.40	44.69	44.69	2.58	1.97	-4.86
3,889.00	23.83	358.63	3,796.79	564.47	45.17	45.17	3.59	3.05	-4.97
3,981.00	26.29	355.12	3,880.13	603.36	42.99	42.99	3.12	2.67	-3.82
4,074.00	29.37	353.18	3,962.36	646.53	38.53	38.53	3.45	3.31	-2.09
4,167.00	30.86	353.01	4,042.81	692.85	32.92	32.92	1.60	1.60	-0.18
4,262.00	29.72	354.59	4,124.84	740.48	27.73	27.73	1.46	-1.20	1.66
4,357.00	25.76	353.18	4,208.91	784.44	23.06	23.06	4.23	-4.17	-1.48
4,451.00	23.30	354.41	4,294.42	823.23	18.82	18.82	2.67	-2.62	1.31
4,545.00	19.87	354.94	4,381.81	857.66	15.60	15.60	3.65	-3.65	0.56
4,640.00	18.29	352.48	4,471.59	888.52	12.23	12.23	1.87	-1.66	-2.59
4,734.00	17.06	356.00	4,561.15	916.90	9.33	9.33	1.73	-1.31	3.74
4,827.00	16.80	354.59	4,650.12	943.89	7.11	7.11	0.52	-0.28	-1.52
4,921.00	16.80	355.47	4,740.11	970.96	4.76	4.76	0.27	0.00	0.94
5,016.00	16.80	356.35	4,831.06	998.34	2.80	2.80	0.27	0.00	0.93

# Precision Drilling Corporation

## Survey Report

<b>Company:</b>	SYNERGY RESOURCES CORP.	<b>Local Co-ordinate Reference:</b>	Well Fagerberg 6N-7C-M
<b>Project:</b>	Weld County, CO NAD 83	<b>TVD Reference:</b>	4800'GL+20'KB @ 4820.00usft (PD 462)
<b>Site:</b>	SRC Fagerberg 33-12 Pad	<b>MD Reference:</b>	4800'GL+20'KB @ 4820.00usft (PD 462)
<b>Well:</b>	Fagerberg 6N-7C-M	<b>North Reference:</b>	True
<b>Wellbore:</b>	Original Hole	<b>Survey Calculation Method:</b>	Minimum Curvature
<b>Design:</b>	Original Hole	<b>Database:</b>	COMPASS_ROCKIES

### Survey

Measured Depth (usft)	Inclination (°)	Azimuth (°)	Vertical Depth (usft)	+N/S (usft)	+E/W (usft)	Vertical Section (usft)	Dogleg Rate (°/100usft)	Build Rate (°/100usft)	Turn Rate (°/100usft)
5,110.00	17.23	0.57	4,920.95	1,025.82	2.08	2.08	1.39	0.46	4.49
5,204.00	20.40	2.50	5,009.91	1,056.12	2.93	2.93	3.44	3.37	2.05
5,298.00	21.98	2.15	5,097.55	1,090.07	4.30	4.30	1.69	1.68	-0.37
5,392.00	22.25	2.32	5,184.64	1,125.43	5.68	5.68	0.30	0.29	0.18
5,485.00	20.05	1.97	5,271.37	1,158.96	6.95	6.95	2.37	-2.37	-0.38
5,578.00	19.96	1.62	5,358.76	1,190.76	7.94	7.94	0.16	-0.10	-0.38
5,671.00	19.08	4.26	5,446.41	1,221.78	9.52	9.52	1.34	-0.95	2.84
5,766.00	19.08	1.97	5,536.20	1,252.79	11.21	11.21	0.79	0.00	-2.41
5,861.00	20.93	0.39	5,625.46	1,285.28	11.86	11.86	2.03	1.95	-1.66
5,956.00	20.66	358.63	5,714.27	1,319.00	11.57	11.57	0.72	-0.28	-1.85
6,049.00	21.46	358.28	5,801.06	1,352.40	10.67	10.67	0.87	0.86	-0.38
6,143.00	21.28	356.35	5,888.60	1,386.62	9.07	9.07	0.77	-0.19	-2.05
6,238.00	19.79	356.52	5,977.56	1,419.87	6.99	6.99	1.57	-1.57	0.18
6,332.00	19.96	352.13	6,065.97	1,451.65	3.83	3.83	1.60	0.18	-4.67
6,433.00	21.90	354.24	6,160.30	1,487.47	-0.42	-0.42	2.06	1.92	2.09
6,526.00	22.95	355.82	6,246.27	1,522.81	-3.48	-3.48	1.30	1.13	1.70
6,619.00	20.84	357.23	6,332.55	1,557.43	-5.60	-5.60	2.34	-2.27	1.52
6,711.00	19.52	0.92	6,418.91	1,589.14	-6.15	-6.15	1.99	-1.43	4.01
6,805.00	18.47	10.76	6,507.81	1,619.48	-3.12	-3.12	3.58	-1.12	10.47
6,899.00	25.41	40.12	6,595.21	1,649.66	12.73	12.73	13.60	7.38	31.23
6,993.00	32.89	54.35	6,677.34	1,680.03	46.55	46.55	10.80	7.96	15.14
7,085.00	35.53	59.80	6,753.43	1,708.05	89.97	89.97	4.39	2.87	5.92
7,178.00	38.16	63.14	6,827.86	1,734.63	138.97	138.97	3.55	2.83	3.59
7,273.00	42.30	67.19	6,900.38	1,760.30	194.65	194.65	5.15	4.36	4.26
7,367.00	48.36	69.82	6,966.44	1,784.71	256.84	256.84	6.75	6.45	2.80
7,460.00	54.87	74.04	7,024.18	1,807.18	326.12	326.12	7.85	7.00	4.54
7,553.00	62.34	78.61	7,072.61	1,825.80	403.19	403.19	9.06	8.03	4.91
7,646.00	69.12	81.43	7,110.82	1,840.43	486.64	486.64	7.80	7.29	3.03
7,740.00	80.20	85.47	7,135.66	1,850.67	576.55	576.55	12.49	11.79	4.30
7,832.00	84.68	87.23	7,147.76	1,856.47	667.54	667.54	5.23	4.87	1.91
7,925.00	86.97	87.23	7,154.53	1,860.95	760.18	760.18	2.46	2.46	0.00
8,046.00	88.71	88.02	7,159.09	1,865.96	880.98	880.98	1.58	1.44	0.65
8,141.00	89.59	88.63	7,160.50	1,868.74	975.93	975.93	1.13	0.93	0.64
8,236.00	91.57	88.72	7,159.54	1,870.93	1,070.89	1,070.89	2.09	2.08	0.09
8,329.00	91.55	89.86	7,157.00	1,872.08	1,163.85	1,163.85	1.23	-0.02	1.23
8,423.00	91.07	90.83	7,154.86	1,871.52	1,257.82	1,257.82	1.15	-0.51	1.03
8,518.00	91.20	91.71	7,152.97	1,869.41	1,352.78	1,352.78	0.94	0.14	0.93
8,612.00	90.78	92.15	7,151.35	1,866.25	1,446.71	1,446.71	0.65	-0.45	0.47
8,706.00	90.47	92.76	7,150.32	1,862.22	1,540.62	1,540.62	0.73	-0.33	0.65
8,800.00	90.43	93.11	7,149.59	1,857.41	1,634.49	1,634.49	0.37	-0.04	0.37
8,894.00	90.19	93.47	7,149.08	1,852.01	1,728.34	1,728.34	0.46	-0.26	0.38
8,987.00	90.30	93.11	7,148.68	1,846.68	1,821.18	1,821.18	0.40	0.12	-0.39
9,081.00	90.38	90.48	7,148.12	1,843.73	1,915.13	1,915.13	2.80	0.09	-2.80

# Precision Drilling Corporation

## Survey Report

<b>Company:</b>	SYNERGY RESOURCES CORP.	<b>Local Co-ordinate Reference:</b>	Well Fagerberg 6N-7C-M
<b>Project:</b>	Weld County, CO NAD 83	<b>TVD Reference:</b>	4800'GL+20'KB @ 4820.00usft (PD 462)
<b>Site:</b>	SRC Fagerberg 33-12 Pad	<b>MD Reference:</b>	4800'GL+20'KB @ 4820.00usft (PD 462)
<b>Well:</b>	Fagerberg 6N-7C-M	<b>North Reference:</b>	True
<b>Wellbore:</b>	Original Hole	<b>Survey Calculation Method:</b>	Minimum Curvature
<b>Design:</b>	Original Hole	<b>Database:</b>	COMPASS_ROCKIES

### Survey

Measured Depth (usft)	Inclination (°)	Azimuth (°)	Vertical Depth (usft)	+N/S (usft)	+E/W (usft)	Vertical Section (usft)	Dogleg Rate (°/100usft)	Build Rate (°/100usft)	Turn Rate (°/100usft)
9,175.00	90.19	88.63	7,147.65	1,844.46	2,009.12	2,009.12	1.98	-0.20	-1.97
9,267.00	90.21	86.96	7,147.33	1,848.00	2,101.05	2,101.05	1.82	0.02	-1.82
9,362.00	90.34	85.47	7,146.88	1,854.27	2,195.84	2,195.84	1.57	0.14	-1.57
9,456.00	90.27	84.68	7,146.38	1,862.34	2,289.49	2,289.49	0.84	-0.07	-0.84
9,548.00	90.52	85.73	7,145.74	1,870.03	2,381.16	2,381.16	1.17	0.27	1.14
9,642.00	90.47	86.52	7,144.93	1,876.39	2,474.94	2,474.94	0.84	-0.05	0.84
9,736.00	90.89	87.14	7,143.81	1,881.58	2,568.79	2,568.79	0.80	0.45	0.66
9,829.00	90.56	88.19	7,142.64	1,885.37	2,661.71	2,661.71	1.18	-0.35	1.13
9,922.00	90.56	89.95	7,141.73	1,886.88	2,754.68	2,754.68	1.89	0.00	1.89
10,015.00	90.58	90.83	7,140.80	1,886.25	2,847.68	2,847.68	0.95	0.02	0.95
10,110.00	91.20	90.30	7,139.33	1,885.31	2,942.66	2,942.66	0.86	0.65	-0.56
10,203.00	91.09	90.30	7,137.47	1,884.82	3,035.64	3,035.64	0.12	-0.12	0.00
10,296.00	90.91	90.21	7,135.85	1,884.41	3,128.63	3,128.63	0.22	-0.19	-0.10
10,390.00	90.58	88.98	7,134.62	1,885.07	3,222.61	3,222.61	1.35	-0.35	-1.31
10,485.00	90.96	88.54	7,133.35	1,887.13	3,317.58	3,317.58	0.61	0.40	-0.46
10,577.00	90.76	88.37	7,131.97	1,889.61	3,409.54	3,409.54	0.29	-0.22	-0.18
10,670.00	91.07	88.81	7,130.48	1,891.90	3,502.50	3,502.50	0.58	0.33	0.47
10,764.00	90.96	88.98	7,128.82	1,893.71	3,596.47	3,596.47	0.22	-0.12	0.18
10,859.00	90.78	87.93	7,127.37	1,896.27	3,691.42	3,691.42	1.12	-0.19	-1.11
10,962.00	91.26	90.65	7,125.54	1,897.55	3,794.38	3,794.38	2.68	0.47	2.64
11,055.00	89.40	90.57	7,125.00	1,896.56	3,887.37	3,887.37	2.00	-2.00	-0.09
11,148.00	89.53	92.24	7,125.87	1,894.28	3,980.34	3,980.34	1.80	0.14	1.80
11,241.00	91.02	93.29	7,125.43	1,889.79	4,073.22	4,073.22	1.96	1.60	1.13
11,334.00	89.64	93.64	7,124.89	1,884.17	4,166.05	4,166.05	1.53	-1.48	0.38
11,429.00	89.55	93.38	7,125.56	1,878.36	4,260.87	4,260.87	0.29	-0.09	-0.27
11,523.00	88.76	91.62	7,126.95	1,874.26	4,354.77	4,354.77	2.05	-0.84	-1.87
11,616.00	88.60	91.80	7,129.09	1,871.48	4,447.70	4,447.70	0.26	-0.17	0.19
11,710.00	88.63	90.92	7,131.36	1,869.25	4,541.65	4,541.65	0.94	0.03	-0.94
11,804.00	88.78	90.39	7,133.49	1,868.18	4,635.61	4,635.61	0.59	0.16	-0.56
11,897.00	89.42	90.92	7,134.95	1,867.11	4,728.60	4,728.60	0.89	0.69	0.57
11,991.00	90.65	90.39	7,134.89	1,866.04	4,822.59	4,822.59	1.42	1.31	-0.56
12,085.00	90.16	90.39	7,134.23	1,865.40	4,916.58	4,916.58	0.52	-0.52	0.00
12,180.00	90.63	90.48	7,133.57	1,864.68	5,011.58	5,011.58	0.50	0.49	0.09
12,275.00	90.58	89.86	7,132.57	1,864.40	5,106.57	5,106.57	0.65	-0.05	-0.65
12,370.00	90.74	89.34	7,131.47	1,865.06	5,201.56	5,201.56	0.57	0.17	-0.55
12,463.00	90.78	90.92	7,130.24	1,864.85	5,294.55	5,294.55	1.70	0.04	1.70
12,558.00	91.04	90.13	7,128.73	1,863.98	5,389.53	5,389.53	0.88	0.27	-0.83
12,653.00	90.91	89.60	7,127.12	1,864.20	5,484.52	5,484.52	0.57	-0.14	-0.56
12,747.00	91.33	89.16	7,125.28	1,865.22	5,578.50	5,578.50	0.65	0.45	-0.47
12,840.00	90.98	91.09	7,123.40	1,865.02	5,671.47	5,671.47	2.11	-0.38	2.08
12,933.00	90.85	90.83	7,121.92	1,863.46	5,764.45	5,764.45	0.31	-0.14	-0.28
13,027.00	90.47	90.21	7,120.83	1,862.61	5,858.44	5,858.44	0.77	-0.40	-0.66
13,120.00	90.45	89.69	7,120.09	1,862.69	5,951.43	5,951.43	0.56	-0.02	-0.56
13,214.00	90.80	89.16	7,119.06	1,863.63	6,045.42	6,045.42	0.68	0.37	-0.56

# Precision Drilling Corporation

## Survey Report

<b>Company:</b>	SYNERGY RESOURCES CORP.	<b>Local Co-ordinate Reference:</b>	Well Fagerberg 6N-7C-M
<b>Project:</b>	Weld County, CO NAD 83	<b>TVD Reference:</b>	4800'GL+20'KB @ 4820.00usft (PD 462)
<b>Site:</b>	SRC Fagerberg 33-12 Pad	<b>MD Reference:</b>	4800'GL+20'KB @ 4820.00usft (PD 462)
<b>Well:</b>	Fagerberg 6N-7C-M	<b>North Reference:</b>	True
<b>Wellbore:</b>	Original Hole	<b>Survey Calculation Method:</b>	Minimum Curvature
<b>Design:</b>	Original Hole	<b>Database:</b>	COMPASS_ROCKIES

### Survey

Measured Depth (usft)	Inclination (°)	Azimuth (°)	Vertical Depth (usft)	+N/-S (usft)	+E/-W (usft)	Vertical Section (usft)	Dogleg Rate (°/100usft)	Build Rate (°/100usft)	Turn Rate (°/100usft)
13,308.00	90.63	90.30	7,117.89	1,864.07	6,139.41	6,139.41	1.23	-0.18	1.21
13,401.00	90.80	89.42	7,116.73	1,864.30	6,232.40	6,232.40	0.96	0.18	-0.95
13,494.00	90.45	90.13	7,115.71	1,864.66	6,325.40	6,325.40	0.85	-0.38	0.76
13,587.00	90.47	89.42	7,114.97	1,865.03	6,418.39	6,418.39	0.76	0.02	-0.76
13,681.00	89.99	90.57	7,114.59	1,865.04	6,512.39	6,512.39	1.33	-0.51	1.22
13,775.00	90.05	90.48	7,114.56	1,864.18	6,606.39	6,606.39	0.12	0.06	-0.10
13,869.00	89.66	90.57	7,114.80	1,863.32	6,700.38	6,700.38	0.43	-0.41	0.10
13,963.00	89.90	90.57	7,115.16	1,862.38	6,794.38	6,794.38	0.26	0.26	0.00
14,057.00	89.48	89.16	7,115.67	1,862.60	6,888.37	6,888.37	1.57	-0.45	-1.50
14,151.00	90.30	90.30	7,115.85	1,863.05	6,982.37	6,982.37	1.49	0.87	1.21
14,245.00	91.24	90.39	7,114.58	1,862.48	7,076.36	7,076.36	1.00	1.00	0.10
14,339.00	91.48	89.25	7,112.35	1,862.77	7,170.33	7,170.33	1.24	0.26	-1.21
14,434.00	89.99	90.92	7,111.13	1,862.63	7,265.32	7,265.32	2.36	-1.57	1.76
14,529.00	89.42	89.95	7,111.62	1,861.91	7,360.31	7,360.31	1.18	-0.60	-1.02
14,623.00	90.49	90.48	7,111.70	1,861.56	7,454.31	7,454.31	1.27	1.14	0.56
14,717.00	90.74	90.57	7,110.69	1,860.70	7,548.30	7,548.30	0.28	0.27	0.10
14,812.00	91.24	90.57	7,109.05	1,859.75	7,643.28	7,643.28	0.53	0.53	0.00
14,906.00	91.64	90.39	7,106.68	1,858.97	7,737.25	7,737.25	0.47	0.43	-0.19
14,935.00	92.08	90.92	7,105.74	1,858.63	7,766.23	7,766.23	2.37	1.52	1.83
14,991.00	92.08	90.92	7,103.71	1,857.74	7,822.18	7,822.18	0.00	0.00	0.00

### Design Targets

Target Name - hit/miss target - Shape	Dip Angle (°)	Dip Dir. (°)	TVD (usft)	+N/-S (usft)	+E/-W (usft)	Northing (usft)	Easting (usft)	Latitude	Longitude
SL 6N-7C-M - actual wellpath hits target center - Point	0.00	0.00	0.00	0.00	0.00	1,425,627.89	3,212,989.83	40.499225°N	104.734123°W
BHL 6N-7C-M - actual wellpath hits target center - Point	0.00	0.00	7,103.71	1,857.74	7,822.18	1,427,553.12	3,220,795.67	40.504321°N	104.705994°W
PBHL 6N-7C-M p3 - actual wellpath misses target center by 9.84usft at 14991.00usft MD (7103.71 TVD, 1857.74 N, 7822.18 E) - Point	0.00	0.00	7,107.45	1,864.73	7,828.00	1,427,560.16	3,220,801.43	40.504340°N	104.705973°W

Checked By: \_\_\_\_\_ Approved By: \_\_\_\_\_ Date: \_\_\_\_\_