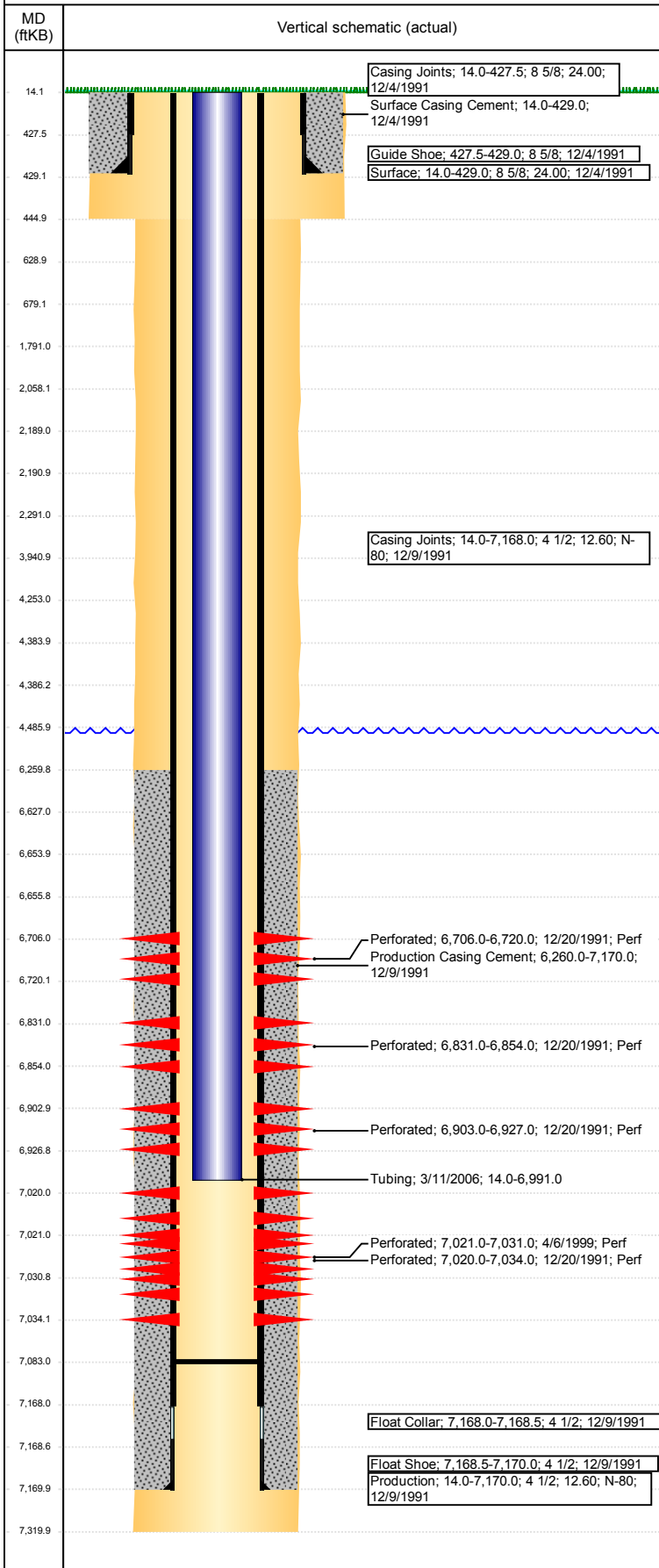


**Well Name: M LEAMING 27-24**

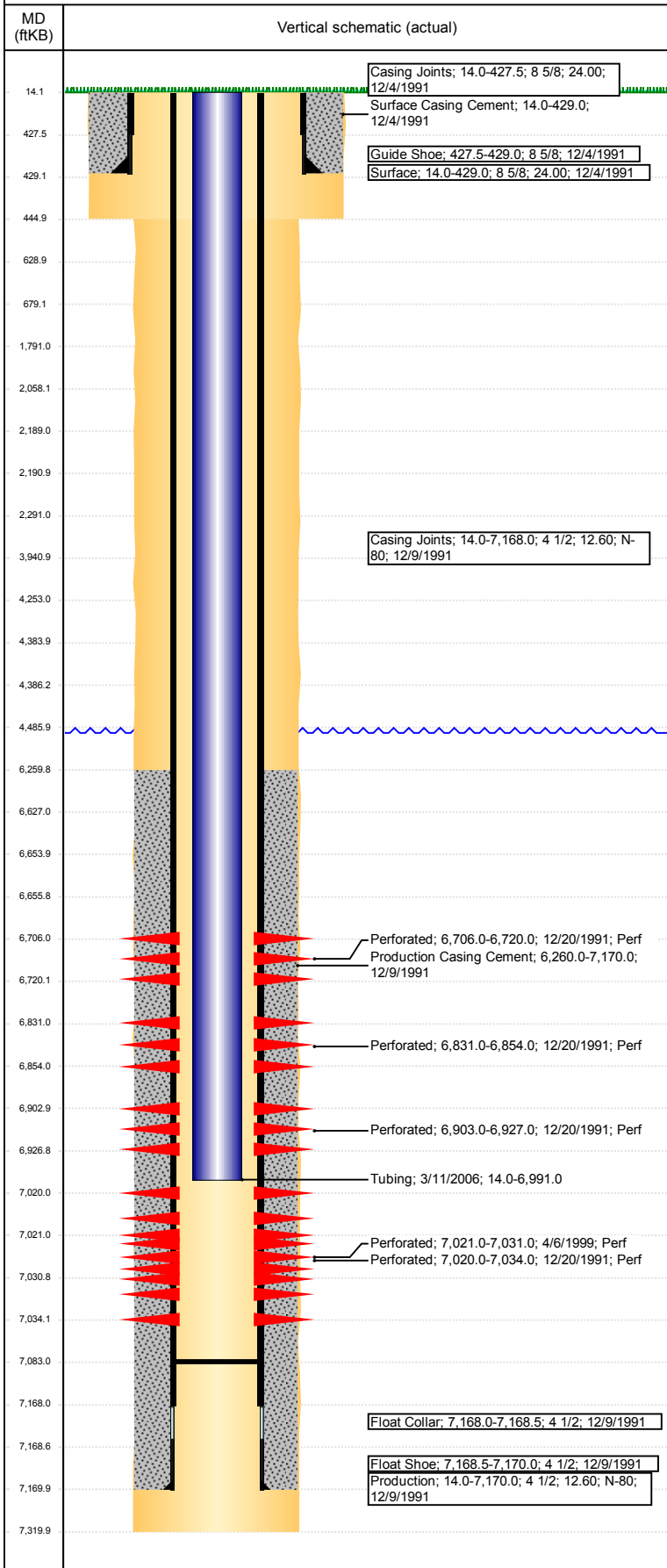
VERTICAL - ORIGINAL HOLE, 8/8/2017 3:37:38 PM



Well Header								
API 05-123-15359		Business Unit DJ BASIN		District 15	Well Config VERTICAL			
Original KB Elevation (ft) 4,671		KB - GL / MSL (ftKB) 14.00		Spud Date 12/4/1991	P & A Date			
Comment								
Directions To Well								
Congressional Location								
Quarter 3 SE	Quarter 4 NW	Section 27	Township 5	Twnshp N/S Dir N	Range 65	Range E/W Dir W		
Bottom Hole Location								
North-South Distance (ft)		From N or S Line		East-West Distance (ft)		From E or W Line		
Plug Back Total Depths								
Date	Depth (ftKB)	Method		Com				
12/9/1991	7,139.0	CASING TALLY		DEPTH LOGGER ON CBL CLEAN OUT TO LAND TUBING				
12/17/1991	7,070.0	CASED HOLE LOG						
3/11/2006	7,083.0	TAG						
Wellbore Sections								
Section Des		Size (in)		Act Top, MD (ftKB)	Act Btm, MD (ftKB)			
SURFACE		12 1/4		14	445			
PRODUCTION		7 7/8		445	7,320			
Zone Statuses								
Zone Name	Status Date	Status	Fluid Type	Job	Prod Method			
CODELL	12/28/1991	PR		DRILLING/CO...				
CODELL	4/9/1999	PR		RE-FRAC, 4/3/...				
NIOBRARA	12/28/1991	PR		DRILLING/CO...				
Casing Strings								
Surface, 429.0ftKB								
Casing Description Surface		Run Date 12/4/1991	OD (in) 8 5/8	Wt/Len (l... 24.00	Grade 	Top, MD (ft... 14.0	MD (ftKB) 429.0	
Production, 7,170.0ftKB								
Casing Description Production		Run Date 12/9/1991	OD (in) 4 1/2	Wt/Len (l... 12.60	Grade N-80	Top, MD (ft... 14.0	MD (ftKB) 7,170.0	
Cement								
Description Surface Casing Cement				Top Depth (ftKB) 14.0		Bottom Depth (ftKB) 429.0		
Description Production Casing Cement				Top Depth (ftKB) 6,260.0		Bottom Depth (ftKB) 7,170.0		
Description DUMP BAIL				Top Depth (ftKB) 6,627.0		Bottom Depth (ftKB) 6,654.0		
Description SHOE PLUG				Top Depth (ftKB) 14.1		Bottom Depth (ftKB) 629.0		
Description CEMENT PLUG				Top Depth (ftKB) 4,253.0		Bottom Depth (ftKB) 4,384.0		
Description CEMENT PLUG				Top Depth (ftKB) 4,386.0		Bottom Depth (ftKB) 4,486.0		
Description SHOE PLUG				Top Depth (ftKB) 629.0		Bottom Depth (ftKB) 679.0		
Description COURTESY PLUG				Top Depth (ftKB) 1,791.0		Bottom Depth (ftKB) 2,291.0		
Description CEMENT PLUG				Top Depth (ftKB) 3,941.0		Bottom Depth (ftKB) 4,486.0		
Description COURTESY PLUG				Top Depth (ftKB) 2,058.0		Bottom Depth (ftKB) 2,189.0		
Description COURTESY PLUG				Top Depth (ftKB) 2,191.0		Bottom Depth (ftKB) 2,291.0		
Tubing Strings								
Tubing Description Tubing		Run Date 3/11/2006	String... 2 3/8	ID (in) 2.00	Wt (lb/ft) 4.70	Grade J-55	Len (ft) 6,977.00	Set De... 
Other In Hole								
Run Date	Des			OD (in)	Top (ftKB)	Btm (ftKB)		
8/3/2017	CICR			3.958	4,384.0	4,386.0		
8/3/2017	CICR			3.958	2,189.0	2,191.0		
8/3/2017	Cast Iron Bridge Plug			3.958	6,654.0	6,656.0		
Logs								
Date	Type				Top, MD (ftKB)	Btm, MD (ftKB)		
12/8/1991	COMPENSATED DENSITY				4,040.0	7,149.0		

**Well Name: M LEAMING 27-24**

VERTICAL - ORIGINAL HOLE, 8/8/2017 3:37:38 PM



Logs			
Date	Type	Top, MD (ftKB)	Btm, MD (ftKB)
12/8/1991	INDUCTION	431.0	7,169.0
12/17/1991	CEMENT BOND	6,100.0	7,068.0
2/10/2017	GYRO	0.0	6,900.0

Perforation Data					
Linked Zone	Bnch/St g	Sum of Entered Shot Total	Top (ftKB)	Btm (ftKB)	Date
		0	2,291.00	2,291.00	8/3/2017
		0	4,486.00	4,486.00	8/3/2017
NIOBRARA, ORIGINAL HOLE		42	6,706.00	6,720.00	12/20/1991
NIOBRARA, ORIGINAL HOLE		69	6,831.00	6,854.00	12/20/1991
NIOBRARA, ORIGINAL HOLE		72	6,903.00	6,927.00	12/20/1991
CODELL, ORIGINAL HOLE		42	7,020.00	7,034.00	12/20/1991
CODELL, ORIGINAL HOLE		40	7,021.00	7,031.00	4/6/1999
<b>Total (Sum)</b>		<b>265</b>			