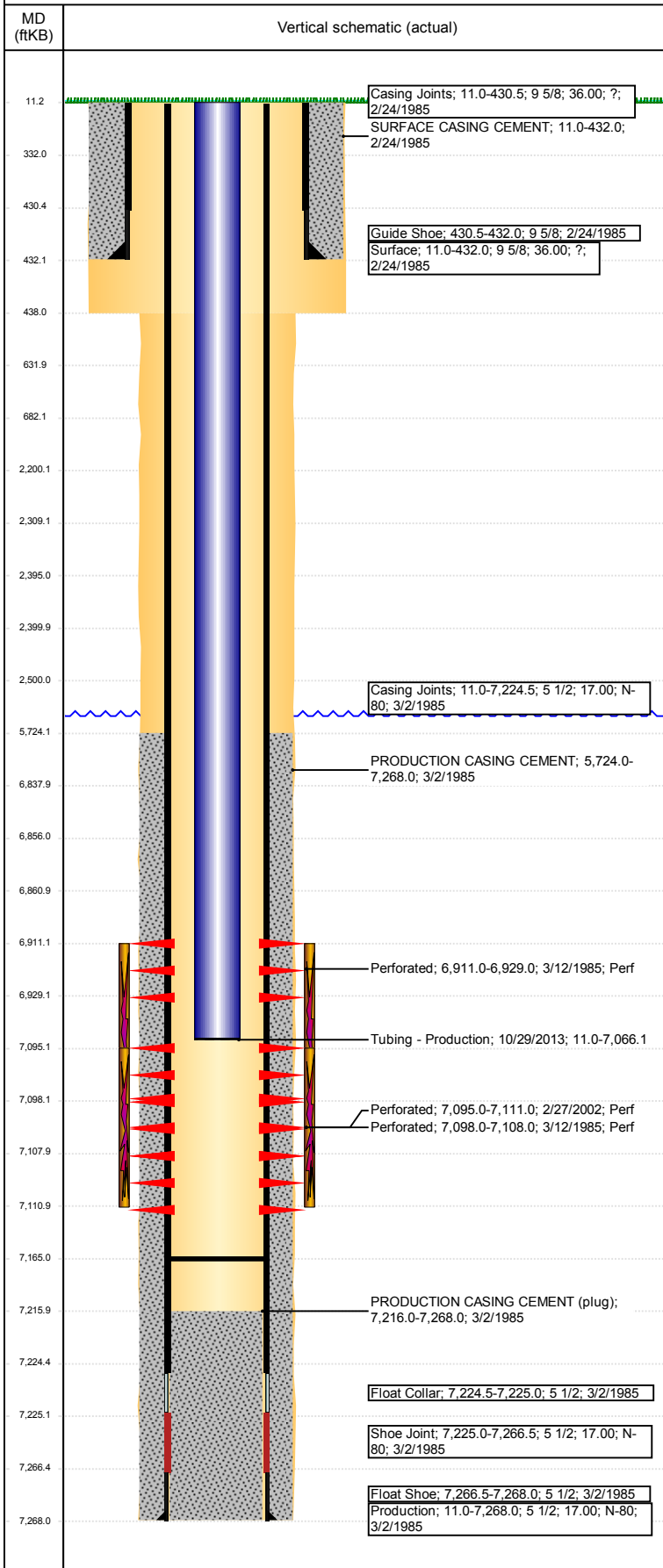


Well Name: G.W. DOERING 01-28

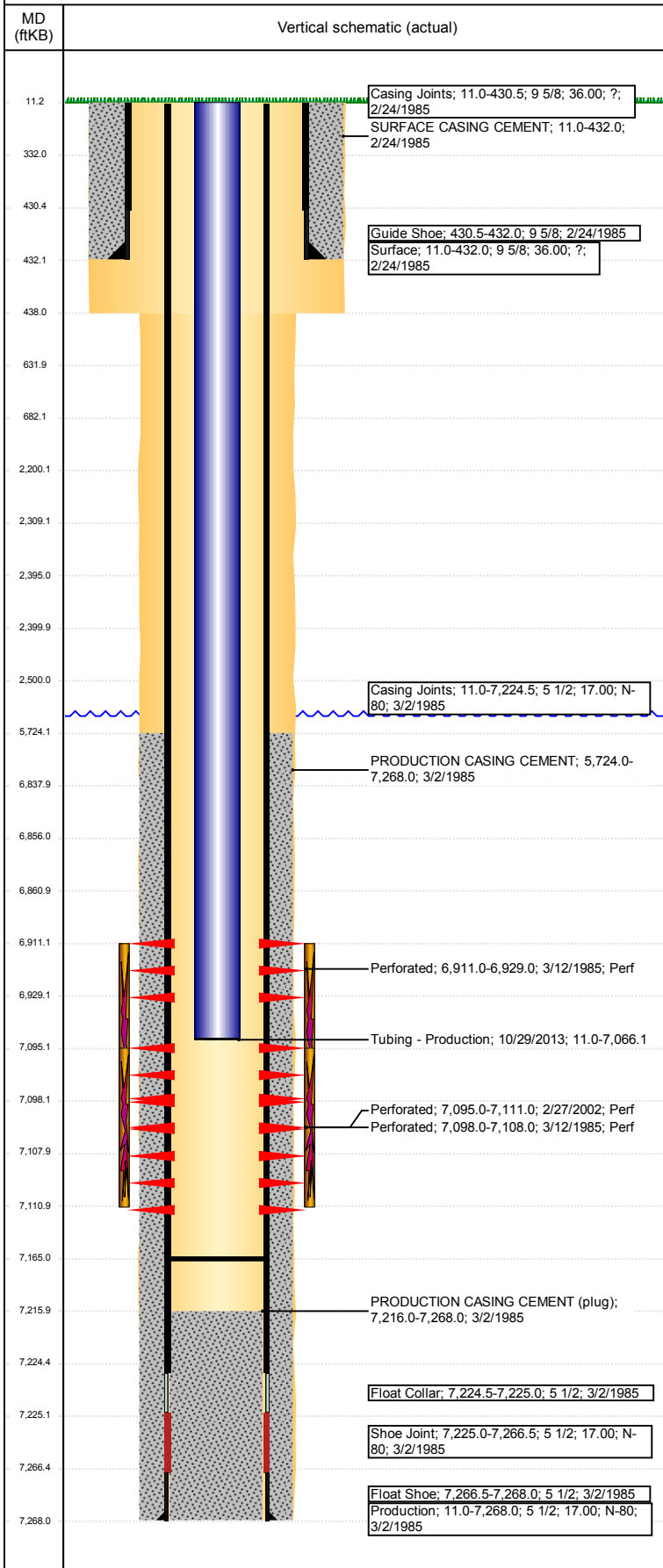
VERTICAL - ORIGINAL HOLE, 8/8/2017 8:11:14 AM



Well Header							
API 05-123-12233	Business Unit DJ BASIN		District 15		Well Config VERTICAL		
Original KB Elevation (ft) 4,720	KB - GL / MSL (ftKB) 11.00		Spud Date 2/24/1985		P & A Date		
Comment TD DISCREPANCY: ST RPT SHOWS 7270', DEPTH LOGGER AND DAILY DRILLING RPTS SHOW 7268'.							
Directions To Well 59TH AVE & O-STREET, W 2/10, TO T.B. CONT. W 6/10 AROUND FIELD INTO.							
Congressional Location							
Quarter 3 SW	Quarter 4 SE	Section 28	Township 6	Twntshp N/S Dir N	Range 66	Range E/W Dir W	
Bottom Hole Location							
North-South Distance (ft)		From N or S Line		East-West Distance (ft)		From E or W Line	
Plug Back Total Depths							
Date	Depth (ftKB)	Method		Com			
3/2/1985	7,224.5	CASING TALLY		TOP OF FLOAT COLLAR			
3/9/1985	7,216.0	CASED HOLE LOG		DEPTH LOGGER ON CBL			
3/16/2002	7,137.0	TAG		TAG TO LAND TUBING			
6/6/2013	7,137.0	TAG		C/O W/ 233 JTS TO 7137.			
10/29/2013	7,165.0	TAG		TAG 7.00' IN ON JT 234			
Wellbore Sections							
Section Des		Size (in)		Act Top, MD (ftKB)		Act Btm, MD (ftKB)	
SURFACE		13 1/4		11		438	
PRODUCTION		7 7/8		438		7,268	
Zone Statuses							
Zone Name	Status Date	Status	Fluid Type	Job	Prod Method		
NIOBRARA-C...	2/23/2010	PR	Water	DRILLING/CO...	Flowing		
NIOBRARA-C...	9/16/2015	PR					
NIOBRARA	3/18/1985	PR	Water	DRILLING/CO...	Flowing		
NIOBRARA	2/23/2010	PR					
CODELL	3/18/1985	PR	Water	RE-FRAC, 2/20...			
CODELL	3/20/2002	PR					
CODELL	2/23/2010	PR			Flowing		
Casing Strings							
Surface, 432.0ftKB							
Casing Description Surface	Run Date 2/24/1985	OD (in) 9 5/8	Wt/Len (l...) 36.00	Grade ?	Top, MD (ft...) 11.0	MD (ftKB) 432.0	
Production, 7,268.0ftKB							
Casing Description Production	Run Date 3/2/1985	OD (in) 5 1/2	Wt/Len (l...) 17.00	Grade N-80	Top, MD (ft...) 11.0	MD (ftKB) 7,268.0	
Cement							
Description SURFACE CASING CEMENT				Top Depth (ftKB) 11.0		Bottom Depth (ftKB) 432.0	
Description PRODUCTION CASING CEMENT				Top Depth (ftKB) 5,724.0		Bottom Depth (ftKB) 7,268.0	
Description Cement Plug				Top Depth (ftKB) 6,838.0		Bottom Depth (ftKB) 6,856.0	
Description Cement Squeeze				Top Depth (ftKB) 2,200.0		Bottom Depth (ftKB) 2,500.0	
Description Balance Plug				Top Depth (ftKB) 2,400.0		Bottom Depth (ftKB) 2,500.0	
Description Cement Plug				Top Depth (ftKB) 2,309.0		Bottom Depth (ftKB) 2,395.0	
Description Cement Plug				Top Depth (ftKB) 332.0		Bottom Depth (ftKB) 632.0	
Description Cement Plug				Top Depth (ftKB) 632.0		Bottom Depth (ftKB) 682.0	
Description Cement Plug				Top Depth (ftKB) 11.0		Bottom Depth (ftKB) 332.0	
Tubing Strings							
Tubing Description Tubing	Run Date 3/16/2002	String... 2 3/8	ID (in) 2.04	Wt (lb/ft) 4.70	Grade J-55	Len (ft) 7,073.00	Set De...
Tubing Description Tubing	Run Date 6/7/2013	String... 2 3/8	ID (in) 2.00	Wt (lb/ft) 4.70	Grade J-55	Len (ft) 6,809.48	Set De...
Tubing Description Tubing - Production	Run Date 10/29/2013	String... 2 3/8	ID (in) 2.00	Wt (lb/ft) 4.70	Grade J-55	Len (ft) 7,055.12	Set De...

Well Name: G.W. DOERING 01-28

VERTICAL - ORIGINAL HOLE, 8/8/2017 8:11:15 AM



Other In Hole				
Run Date	Des	OD (in)	Top (ftKB)	Btm (ftKB)
7/24/2017	Cast Iron Bridge Plug	5 1/2	6,856.0	6,861.0
7/24/2017	Cement Retainer	5 1/2	2,395.0	2,400.0

Logs				
Date	Type	Top, MD (ftKB)	Btm, MD (ftKB)	
3/2/1985	COMPENSATED NEUTRON	4,250.0	7,265.0	
3/2/1985	INDUCTION	433.0	7,262.0	
3/9/1985	CEMENT BOND	5,580.0	7,215.0	

Perforation Data					
Linked Zone	Bnch/St g	Sum of Entered Shot Total	Top (ftKB)	Btm (ftKB)	Date
CODELL, ORIGINAL HOLE		6	2,500.00	2,500.00	
NIOBRARA, ORIGINAL HOLE		10	6,911.00	6,929.00	3/12/1985
CODELL, ORIGINAL HOLE		64	7,095.00	7,111.00	2/27/2002
CODELL, ORIGINAL HOLE		5	7,098.00	7,108.00	3/12/1985
Total (Sum)		85			

Stimulation Intervals		
Start Date	Primary Job Type	
3/13/1985	DRILLING/COMPLETION - ORIGINAL	
Technical Result	Tech Result Details	Tech Result Note
Comment		
ACIDIZE		
Start Date	Primary Job Type	
3/15/1985	DRILLING/COMPLETION - ORIGINAL	
Technical Result	Tech Result Details	Tech Result Note
Comment		
LIMITED ENTRY FRAC		
Start Date	Primary Job Type	
3/13/2002	RE-FRAC	
Technical Result	Tech Result Details	Tech Result Note
Comment		
Start Date	Primary Job Type	
3/13/1985	DRILLING/COMPLETION - ORIGINAL	
Technical Result	Tech Result Details	Tech Result Note
Comment		
ACIDIZE		