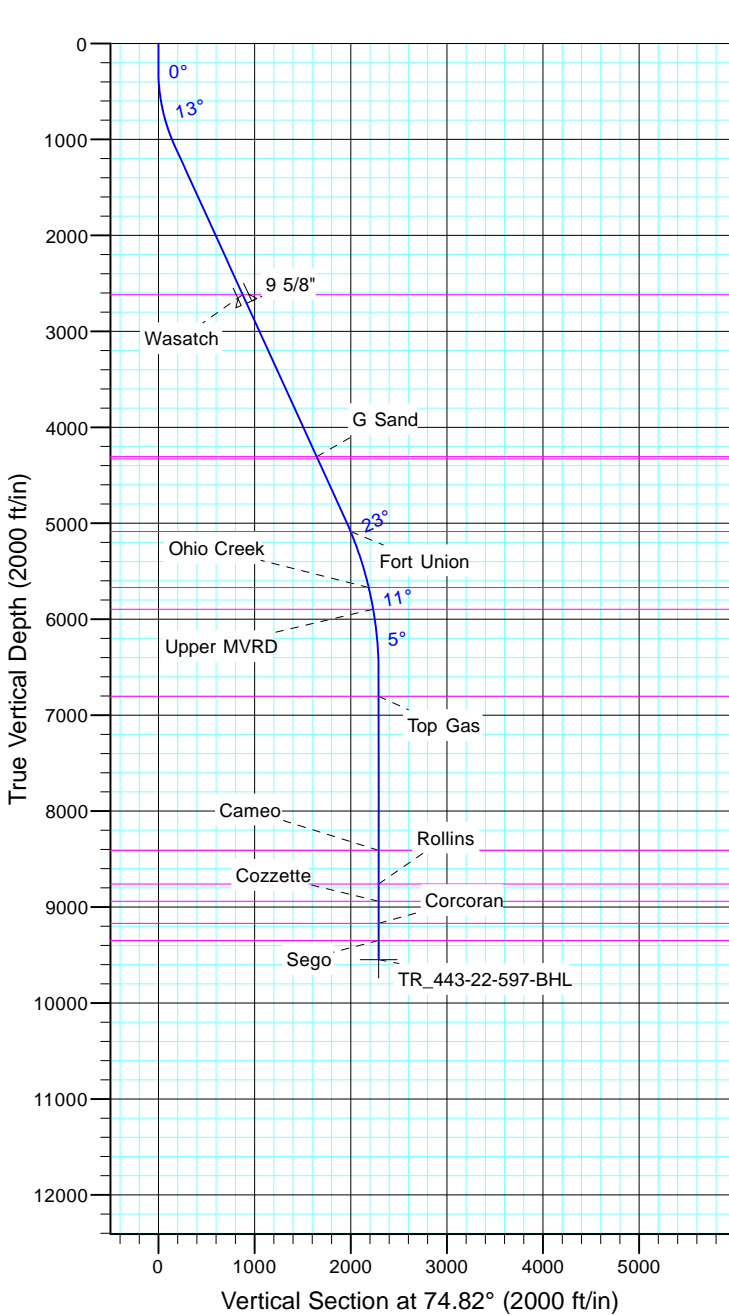


TEP Rocky Mountain LLC  
Project: Garfield County, CO NAD83  
Site: TR 23-22-597  
Well: TR 443-22-597  
Wellbore: OH  
Design: Plan #1



Azimuths to True North  
Magnetic North: 11.59°  
  
Magnetic Field  
Strength: 53046.0snT  
Dip Angle: 66.02°  
Date: 12/31/2004  
Model: IGRF2000



Vertical Section at 74.82° (2000 ft/in)

CASING DETAILS			
TVD	MD	Name	Size
2708.4	2895.0	9 5/8"	9.625

FORMATION TOP DETAILS			
TVDPath	MDPath	Formation	
2618.0	2795.7	Wasatch	
4307.0	4651.8	G Sand	
4330.0	4677.1	G Sand Base	
5086.0	5506.9	Fort Union	
5671.0	6122.3	Ohio Creek	
5896.0	6352.0	Upper MVRD	
6804.0	7263.2	Top Gas	
8411.0	8870.2	Cameo	
8760.0	9219.2	Rollins	
8941.0	9400.2	Cozzette	
9170.0	9629.2	Corcoran	
9349.0	9808.2	Sego	

Name	TVD	+N/-S	+E/-W	Northing	Easting	Latitude	Longitude
TR_443-22-597-BHL	9549.0	599.9	2210.2	1654214.70	2223115.79	39° 35' 50.039 N	108° 15' 26.481 W

SECTION DETAILS										
Sec	MD	Inc	Azi	TVD	+N/-S	+E/-W	Dleg	TFace	VSect	Target
1	0.0	0.00	0.00	0.0	0.0	0.0	0.00	0.00	0.0	
2	280.0	0.00	0.00	280.0	0.0	0.0	0.00	0.00	0.0	
3	1096.7	24.50	74.82	1072.1	45.0	166.0	3.00	74.82	172.0	
4	5374.8	24.50	74.82	4964.9	509.8	1878.2	0.00	0.00	1946.2	
5	7008.2	0.00	0.00	6549.0	599.9	2210.2	1.50	180.00	2290.2	
6	10008.2	0.00	0.00	9549.0	599.9	2210.2	0.00	0.00	2290.2	TR_443-22-597-BHL

