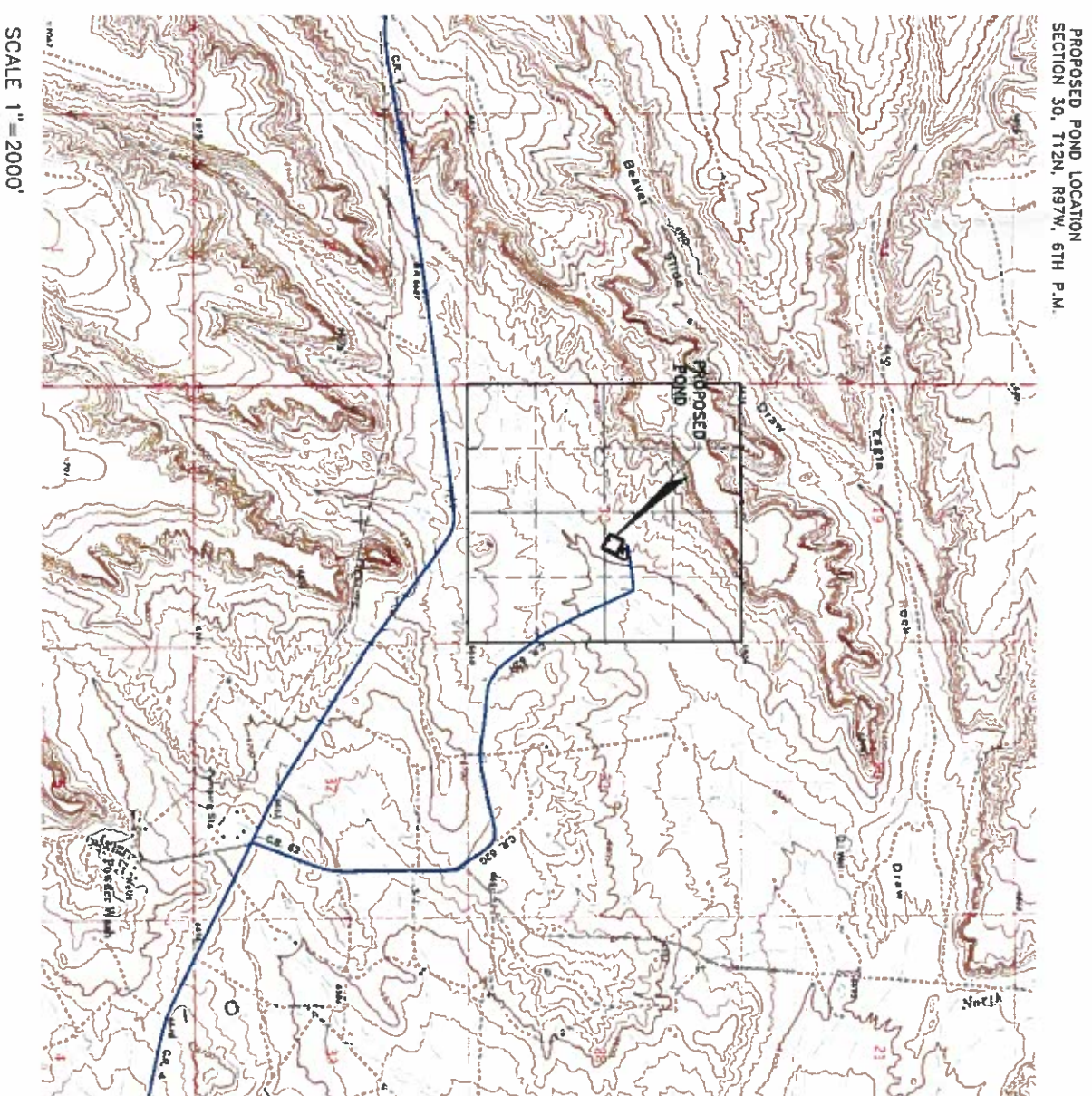


CENTER OF POND LOCATION:
LATITUDE: 40° 58' 18.09" N (NAD83)
LONGITUDE: 108° 19' 56.19" W (NAD83)
2478' FROM THE NORTH LINE OF SECTION 30
1885' FROM THE EAST LINE OF SECTION 30



081-27422

[illegible]

DOMINION ENERGY WEXPRO
POWDER WASH EVAPORATION FACILITY
LOCATED IN THE SW 1/4 OF THE NE 1/4
AND THE NW 1/4 OF THE SE 1/4 OF
SECTION 30, T12N, R97W, 6th P.M.
MOFFAT COUNTY, COLORADO

UNTAH
ENGINEERING & LAND SURVEYING

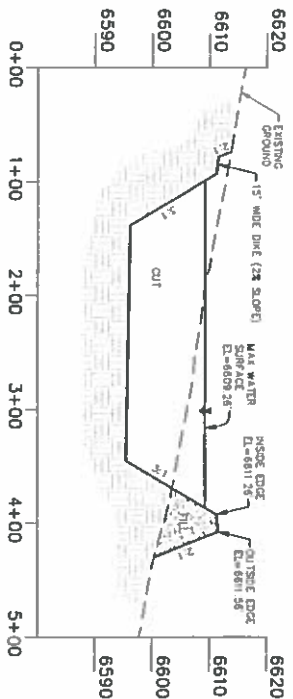
**CIVIL, ENGINEERING AND
LAND SURVEYING SERVICES**

85 South 200 East, Vernal, UT 84078
O: 435.789.1917
www.untahgroup.com

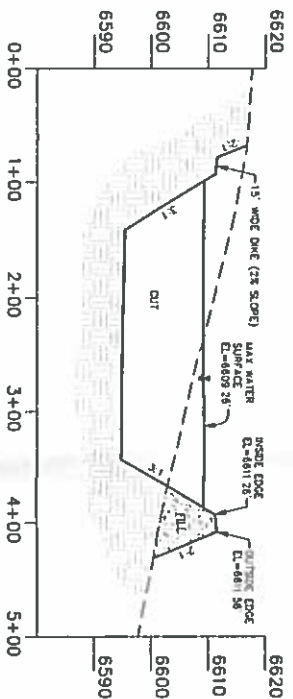
- SINCE 1964 -

SCALE: NOT TO SCALE
DRAWN BY: D.G.W.
DATE DRAWN: 07/10/17
UELS FILE NO.: W - 2110
PROJ. NO.: DOW-04-17-0003
FILE: 33120

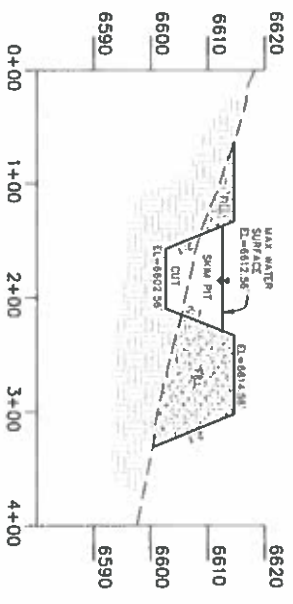
SELF



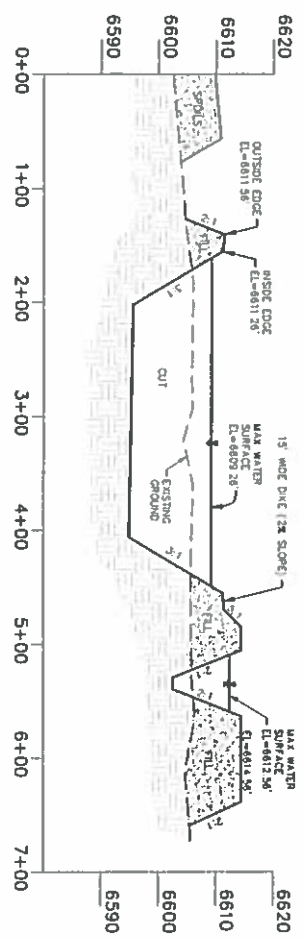
Juniper Creek Dam



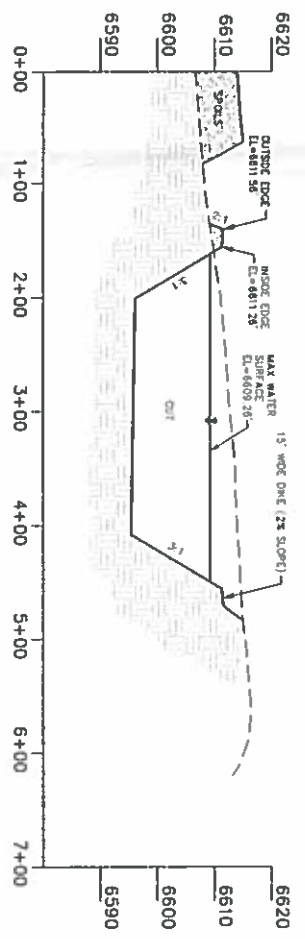
Juniper Creek Dam



Juniper Creek Dam



SECTION "D"



SECTION "E"



DISTURBANCE AREA
3.79 ACRES (DISTURBANCE FOOTPRINT)
6.54 ACRES (FENCED AREA)

EARTHWORK APPROXIMATE YARDAGES

RAW CUT = 29,164 CU YDS
FILL = 19,332 CU YDS
FILL+10% = 21,265 CU YDS
EXCESS = 7,899 CU YDS

TOP SOIL CUT & STOCKPILE
RAW CUT = 3,025 CU YDS
Top soil for area within oil areas of new disturbance (6" depth)

EVAPORATION POND VOLUME

POND VOLUME EXCLUDING FREEBOARD
31,195 CYD, 19,334 acre feet, 190,014 BBL
SURFACE AREA AT MAX. LIQUID DEPTH
82,686 SQUARE FEET (1,898 ACRES)

SKIM PIT VOLUME

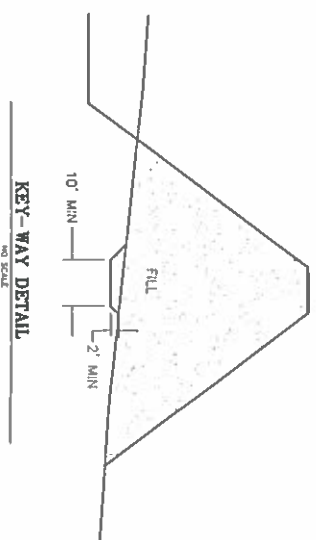
POND VOLUME EXCLUDING FREEBOARD
849 CYD, 0.53 acre feet, 4,085 BBL
SURFACE AREA AT MAX. LIQUID DEPTH
4,600 SQUARE FEET (0.106 ACRES)

MAXIMUM DAM HEIGHT

TOP OF DIKE ELEVATION (AT CENTERLINE) TO
LOWEST NATURAL GROUND = 9.90 FT

DAM LENGTH

PERIMETER OF POND (FILL SECTION)
723 FT



UNITAH
ENGINEERING & LAND SURVEYING
CIVIL ENGINEERING AND
LAND SURVEYING SERVICES
45 South 200 East, Vernal, UT 84078
O-435-789-1017
www.unitaheng.com
- SINCE 1964 -

DOMINION ENERGY WEXPRO
POWDER WASH EVAPORATION FACILITY
LOCATED IN THE SW 1/4 OF THE NE 1/4
AND THE NW 1/4 OF THE SE 1/4 OF
SECTION 30, T12N, R97W, 6th P.M.
MOFFAT COUNTY, COLORADO

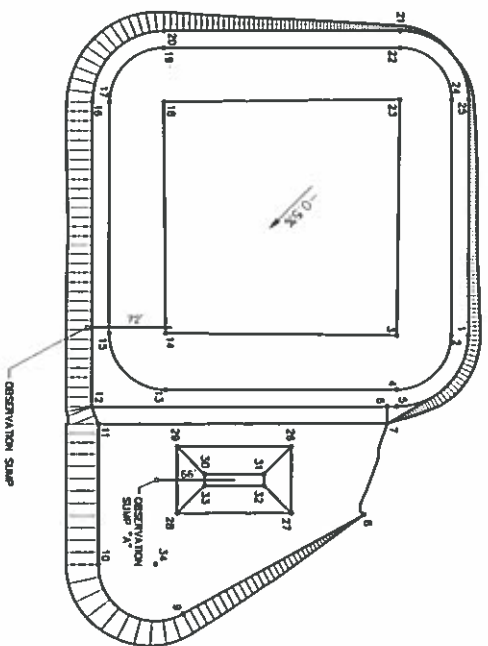
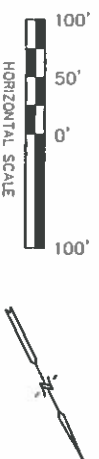
REV	DATE	BY	CHKD	DESCRIPTION

RESPONSIBLE ENGINEER:

CROSS SECTIONS

SCALE, AS SHOWN
DRAWN BY: D.G.W.
DATE DRAWN: 07.06.17
TEST FILE NO. W-2110
PROJ. NO. D00B017/0003
FILE: 33120

SHEET
3



LINER QUANTITIES

(7 FT AROUND PERIMETER FOR ANCHORAGE, NO ALLOWANCE SHOWN FOR SEAMS OR WASTE)

EVAPORATION POND

98.540 SQ FT

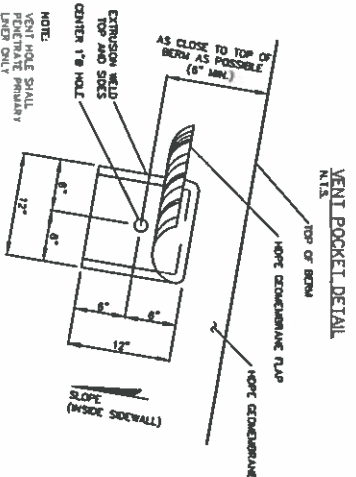
SKIM PIT

8.835 50 FT

TOTAL

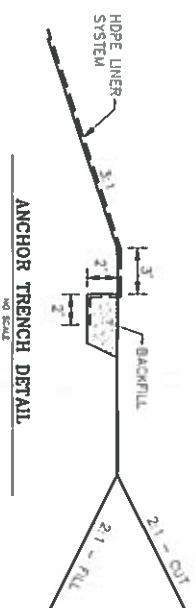
107,375 SQ FT

RECORDING, REPORTING, AND REPAIRS
THE OBSERVATION SLIP WILL BE CHECKED ACCORDING TO THE COLORADO OIL AND GAS CONSERVATION COMMISSION REQUIREMENTS.
IF LIQUID IS FOUND WITHIN THE OBSERVATION SLIP
THE FOLLOWING PROCEDURES WILL BE FOLLOWED:
- THE COLORADO OIL AND GAS CONSERVATION COMMISSION WILL BE PROMPTLY INFORMED AND CONSULTED DURING CONNECTIVE ACTION PLANNING
- IF REPAIRS ARE NECESSARY, ALL REPAIRS WILL BE MADE IN ACCORDANCE WITH THE USER MANUFACTURER'S SPECIFICATIONS.

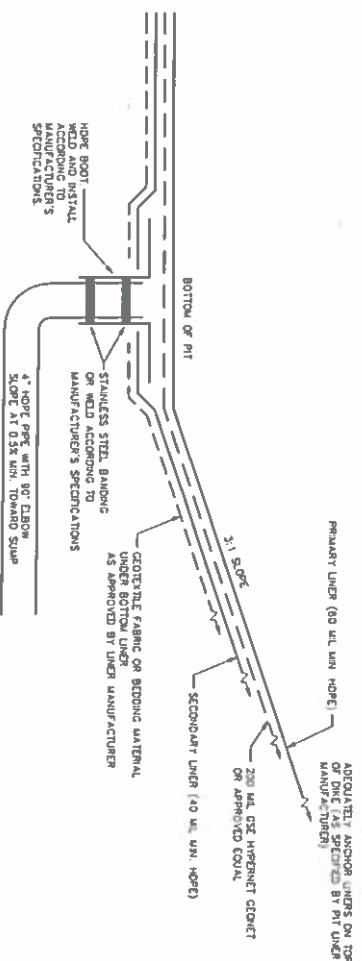


NOTE

VENT PIPES SHALL BE INSTALLED AT 50 O.C. MAX. OR AS APPROVED BY THE ENGINEER. LADDERS SHALL BE CONSTRUCTED OF 60 LB. HOLE LUGS AND 2" X 4" JOISTS. LADDERS SHALL BE FASTENED TO PRIMARY UNDER LAYERS OF TYPED BRICKS OR OTHER EQUIVALENT. CESSARY METHODS MAY BE USED WITH APPROVAL OF THE ENGINEER AND OWNER.



ANCHOR TRENCH DETAIL

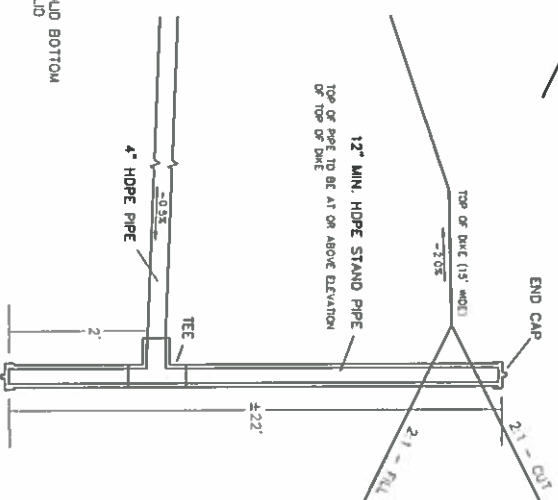


LEAK DETECTION SYSTEM

NO SCALE

OBSERVATION SUMP NOTES

- OBSERVATION SUMP TO BE PIPE STAND WITH SOLID BOTTOM
- OBSERVATION SUMP WILL HAVE RODENT PROOF LID
- OBSERVATION SUMP WILL HAVE AN INVERT
- 2' LOWER THAN THE PIPE INVERT ELEVATION.



OBSERVATION SUMP DETAIL

NO SCALE

[illegible]**RESPONSIBLE ENGINEER**

DETAILS

SCALE: NO SCALE
DRAWN BY: D.G.W.
DATE DRAWN: 07-10-17
UHS FILE NO.: W - 2110
PROJ. NO.: DONM-17-0003
FILE: 33120

Still

4

UNITAH
INGENIERIA, LANO SUREVING
CIVIL ENGINEERING AND
LAND SURVEYING SERVICES
85 South 200 East, Vernal, UT 84078
Or, 435.789.1817
www.unitahgroup.com
- SINCE 1964 -

DOMINION ENERGY WEXPRO
POWDER WASH EVAPORATION FACILITY
LOCATED IN THE SW 1/4 OF THE NE 1/4
AND THE NW 1/4 OF THE SE 1/4 OF
SECTION 30, T12N, R97W, 6th P.M.
MOFFAT COUNTY, COLORADO