



July 17, 2017

Colorado Oil and Gas Conservation Commission
1120 Lincoln Street, Suite 801
Denver, CO 80203

RE: Proposed Wellbore Spacing Unit
Wilson IC 03-179HNX
Niobrara New Drill
NWNW Sec. 1, Township 3N, Range 68W, 6th P.M.
Weld County, Colorado

Dear Director Lepore,

Great Western Operating Company, LLC (Great Western) is planning to drill the above captioned well in accordance with the provisions of Colorado Oil and Gas Conservation Commission (COGCC) Rule 318A.e.

Great Western's proposed wellbore spacing unit consists of:

Township 3N, Range 68W (Weld County):
Section 2: S/2N/2 & N/2S/2
Section 3: S/2N/2 & N/2S/2

Total Acres: 640 ac

The 30 day notification time period has passed and we have not yet received any objections to such well locations or proposed spacing unit, therefore Great Western hereby requests the Director to approve the above mentioned well. Great Western respectfully requests the COGCC review the enclosed map illustrating the proposed wellbore spacing unit.

Respectfully,

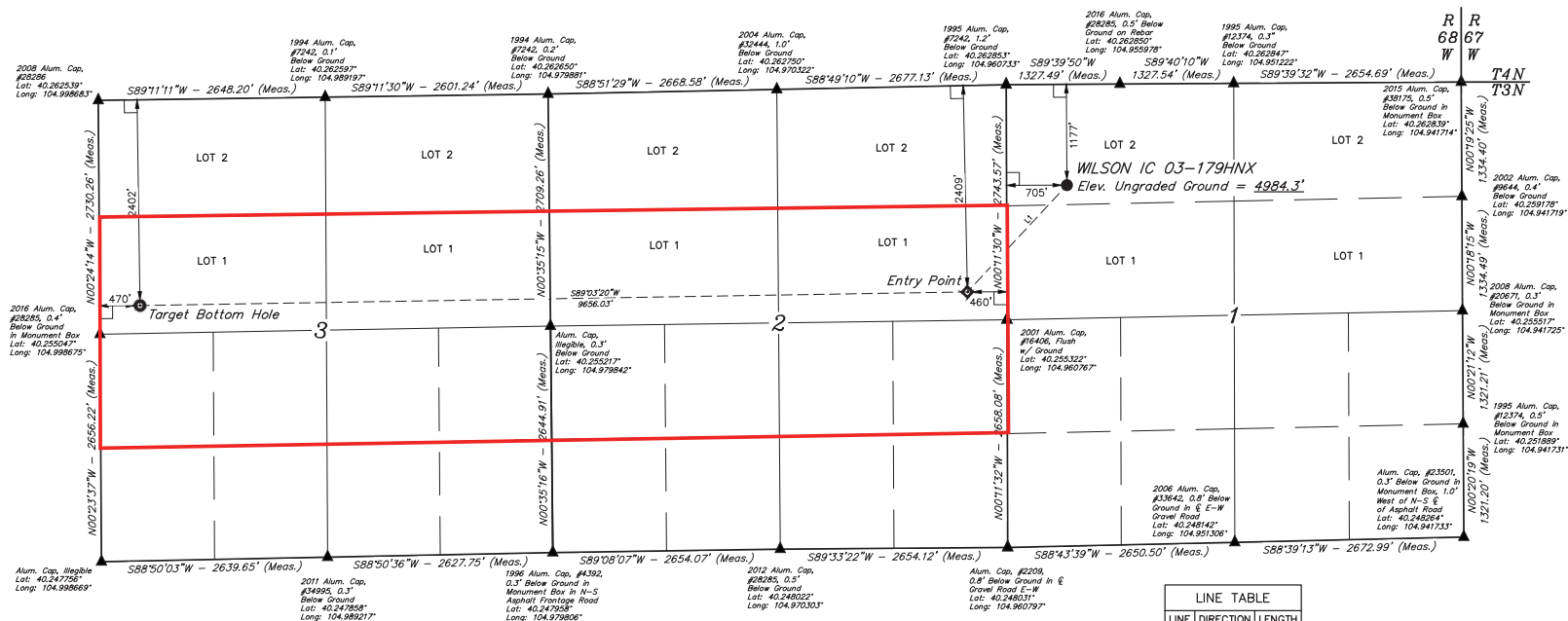
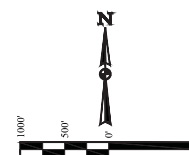
Ashley Noonan

Ashley Noonan
Senior Regulatory Analyst
Great Western Operating Company, LLC

GREAT WESTERN OPERATING COMPANY

BASIS OF BEARINGS

BASIS OF ELEVATION
USGS COOPERATIVE BASE NETWORK CONTROL STATION,
DESIGNATION 'VERMILYEA'. NGS DATA SHEET LISTS THE NAVD
88 ELEVATION AS BEING 5026 FEET.



LINE TABLE		
LINE	DIRECTION	LENGTH
L1	S42°57'49"W	1703.2

THIS IS TO CERTIFY THAT THE ABOVE SIGNED PHILIP ARRO
NOTES OF ACTUAL SURVEYS MADE AND TAKEN UNDER MY SUPERVISION
AND THAT THE SAME ARE TRUE AND CORRECT TO THE BEST OF MY
KNOWLEDGE AND BELIEF.

REGISTERED LAND SURVEYOR
REGISTRATION NO. 28285
STATE OF CALIFORNIA

15-STA-16

REV: 2 11-14-16 L.C.S. (ADD EP, TBH & NAME CHANGE)

PDOP = 1.4

UELS, LLC
Corporate Office * 85 South 200 East
Vernal, UT 84078 * (435) 789-1017


 UINTAH
 ENGINEERING & LAND SURVEYING
 SURVEYED BY ZANE B
 DRAWN BY
 WELL L

WELL LOCATION PLAT

UELS, LLC
e Office * 85 South 200 East
UT 84078 * (435) 789-1017

I_s	04-11-16	SCALE
	07-21-16	17 = 100%

N PLAT

LEGEND:

90° SYMBOL

● = PROPOSED WELLHEAD.

● = TARGET BOTT

◆ = ENTRY POINT.

PDOP = 1.4