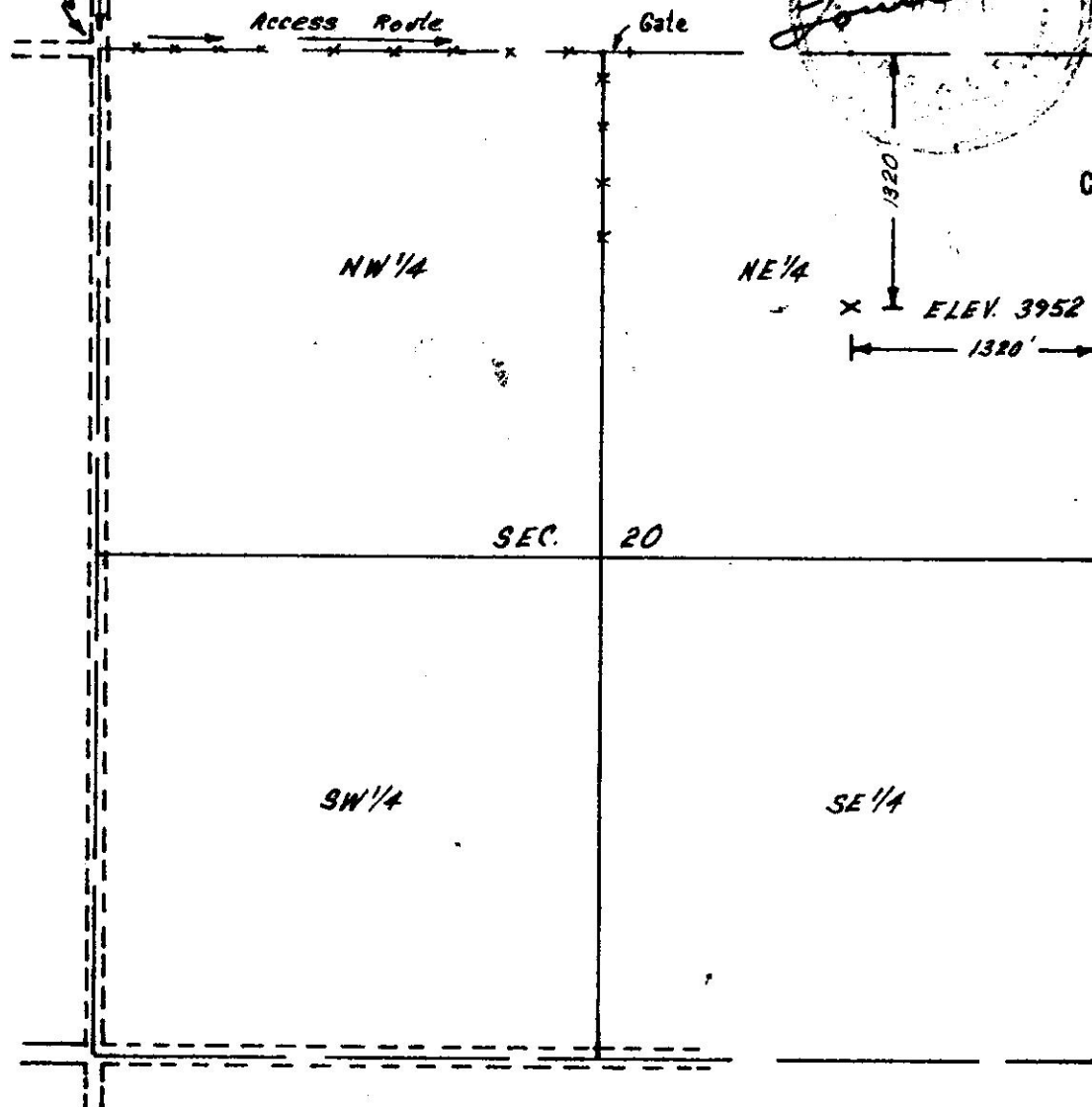


I hereby certify that the accompanying plat is an accurate representation of a correct survey showing the location of a proposed well. This location may be described as a point 1320 feet south of the north line and 1320 feet west of the east line of Section 20, T3N, R46W of the 6th P.M., all in Yuma County, Colorado. The surface elevation at this point is 3952 feet above mean sea level.

1 mile
North to
K-A Compressor
Station



RECEIVED
DEC 11 1979

COLO. OIL & GAS CONS. COM.

X SURVEYED POINT



00003196

HARMON
ENGINEERING
SERVICES

BLACH BROS. 1-20 NE 1/4 SEC. 20, T3N,
R46W

MIDLAND GAS CORP. 28 NOVEMBER 1979

RS

YUMA COUNTY, COLORADO

9058