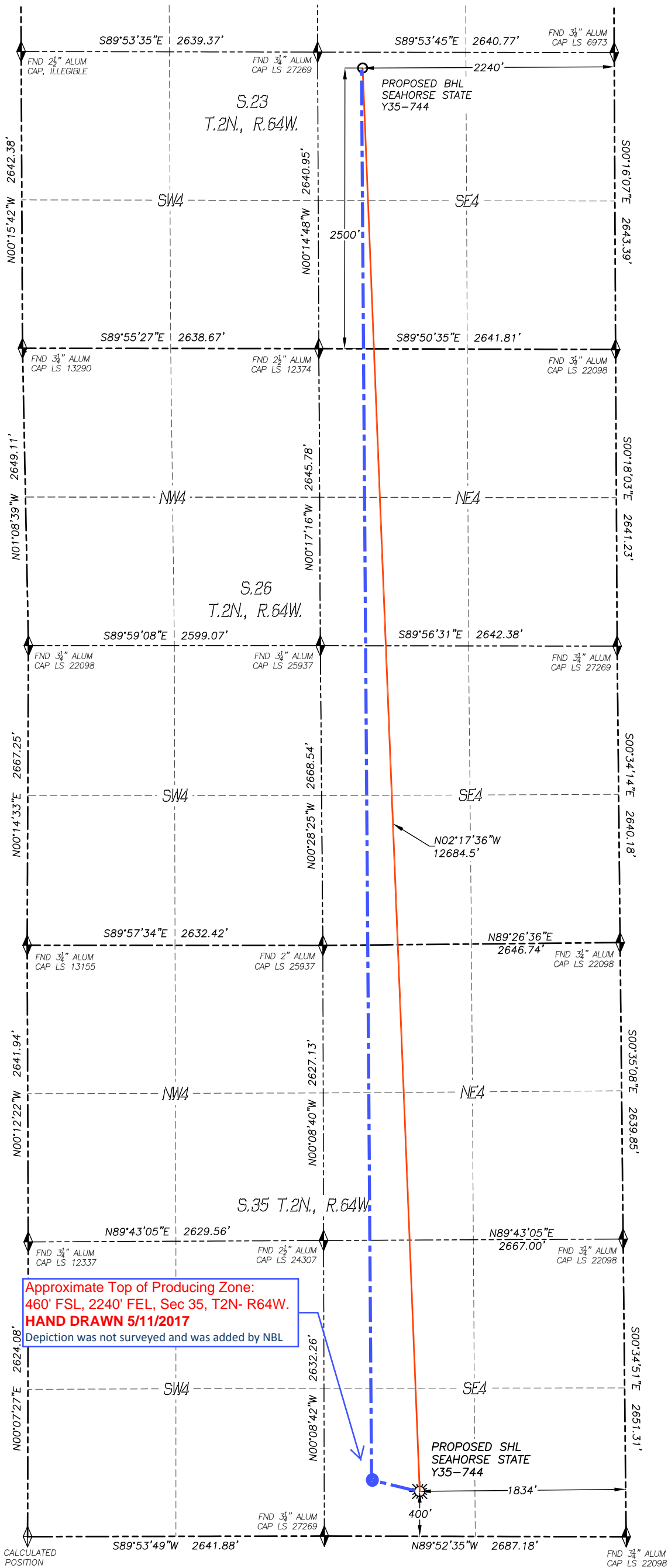


WELL LOCATION CERTIFICATE  
SEAHORSE STATE Y35-744  
SECTION 35, T.2N., R.64W, 6TH P.M.



IN ACCORDANCE WITH A REQUEST FROM TYLER BEAVERS OF NOBLE ENERGY INC., DALEY LAND SURVEYING, INC. HAS DETERMINED THE SURFACE LOCATION OF THE SEAHORSE STATE Y35-744 WELL TO BE 400' FSL, 1834' FEL, AS MEASURED AT NINETY (90) DEGREES FROM THE SECTION LINES OF SECTION 35, TOWNSHIP 2 NORTH, RANGE 64 WEST, AND THE BOTTOM HOLE LOCATION TO BE 2500' FSL, 2240' FEL, AS MEASURED AT NINETY (90) DEGREES FROM THE SECTION LINES OF SECTION 23, TOWNSHIP 2 NORTH, RANGE 64 WEST OF THE 6TH PRINCIPAL MERIDIAN, WELD COUNTY, COLORADO.

I HEREBY STATE THAT THIS WELL LOCATION CERTIFICATE WAS PREPARED BY ME OR UNDER MY DIRECT SUPERVISION, THAT THE WORK WAS COMPLETED ON 1/10/2017 FOR AND ON BEHALF OF NOBLE ENERGY, INC., AND THAT THIS MAP DOES NOT REPRESENT A BOUNDARY SURVEY, IT IS NOT A LAND SURVEY PLAT OR AN IMPROVEMENT SURVEY PLAT AND IT IS NOT TO BE RELIED UPON FOR THE ESTABLISHMENT OF FENCE, BUILDING OR OTHER FUTURE IMPROVEMENT LINES.

NOTES:

- 1) BEARINGS FOR THIS MAP ARE ASSUMED AND BASED UPON GPS OBSERVATIONS MADE BETWEEN MONUMENTS LOCATED AT THE SOUTHEAST CORNER AND SOUTH QUARTER CORNER OF SECTION 35, T.2N., R.64W.
- 2) HORIZONTAL DATUM IS NAD83.
- 3) VERTICAL DATUM IS NAVD88 AND ORIGINATES FROM THE LOCAL C.O.R.S. NETWORK, UTILIZING THE GEOID12A MODEL.
- 4) SEE LOCATION DRAWING FOR VISIBLE IMPROVEMENTS WITHIN 500' OF PROPOSED DISTURBED AREA.
- 5) SURFACE USE: AGRICULTURAL.
- 6) INST. OPERATOR: TREVOR DALEY.
- 7) NEAREST WELL: NO WELLS IN THIS SECTION

NAD 83 LATITUDE AND LONGITUDE

SURFACE LOCATION:

LATITUDE: N40.08875°  
LONGITUDE: W104.51535°  
ELEV: 4965'  
PDOP: 1.0  
QTR/QTR: SW4/SE4

BOTTOM HOLE:

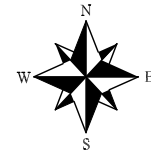
LATITUDE: N40.12353°  
LONGITUDE: W104.51716°

NEAREST CULTURAL ITEMS:

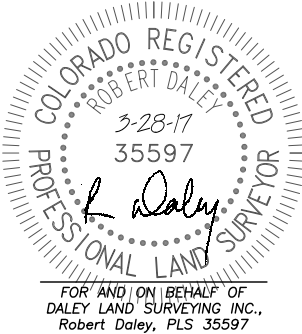
BUILDING: 1085'± SW  
BUILDING UNIT: 1268'± SW  
HIGH OCC. BLD. UNIT: 5280'+  
DES. OUTSIDE ACTIVITY AREA: 5280'+  
PUBLIC ROAD: 388'± S  
ABOVE GROUND UTILITY: 1059'± SW  
RAILROAD: 5280'+  
PROPERTY LINE: 400'± S

LEGEND

- FOUND MONUMENT AS DESCRIBED
- PROPOSED WELL
- EXISTING WELL
- BOTTOM HOLE
- ABANDONED WELL
- CALCULATED POSITION



0 1000'  
SCALE: 1" = 1000'



noble energy

DALEY LAND SURVEYING, INC.  
970.302.4159