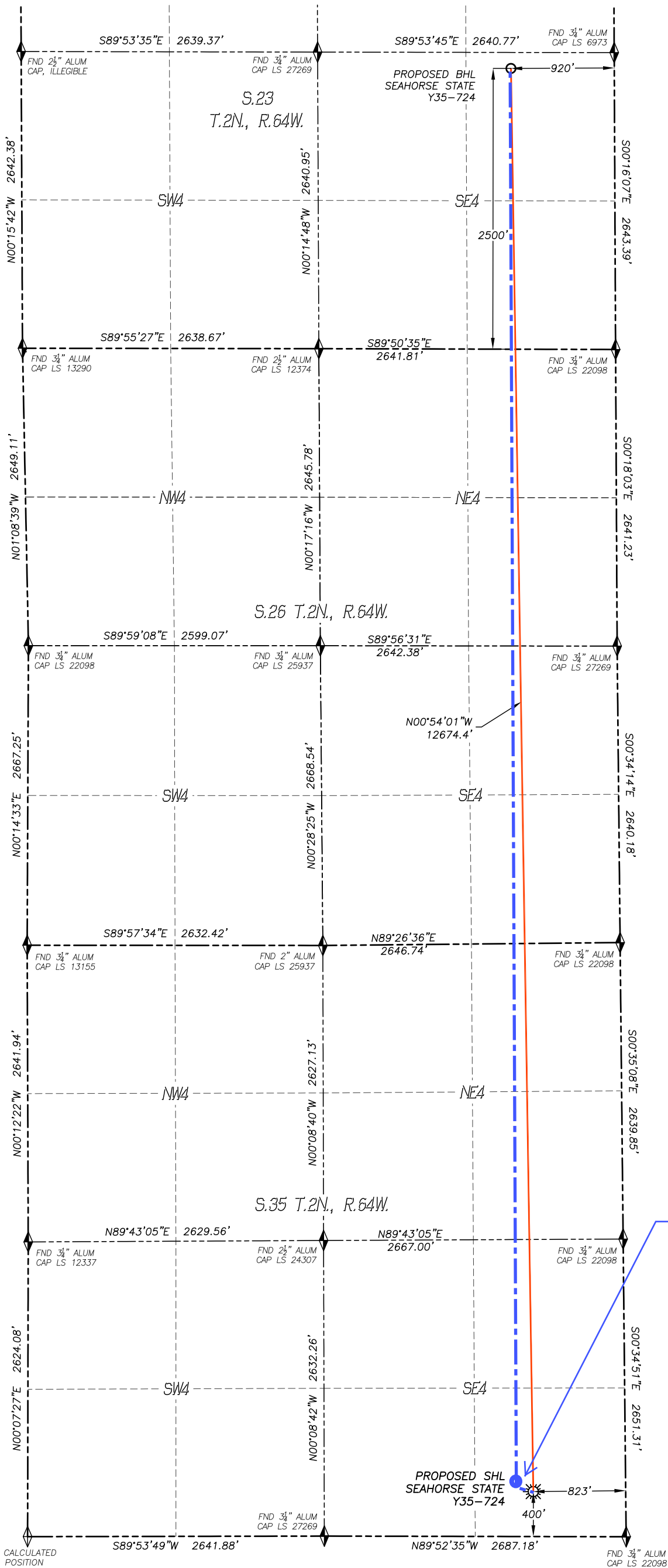


WELL LOCATION CERTIFICATE  
SEAHORSE STATE Y35-724  
SECTION 35, T.2N., R.64W, 6TH P.M.



IN ACCORDANCE WITH A REQUEST FROM TYLER BEAVERS OF NOBLE ENERGY INC., DALEY LAND SURVEYING, INC. HAS DETERMINED THE SURFACE LOCATION OF THE SEAHORSE STATE Y35-724 WELL TO BE 400' FSL, 823' FEL, AS MEASURED AT NINETY (90) DEGREES FROM THE SECTION LINES OF SECTION 35, TOWNSHIP 2 NORTH, RANGE 64 WEST, AND THE BOTTOM HOLE LOCATION TO BE 2500' FSL, 920' FEL, AS MEASURED AT NINETY (90) DEGREES FROM THE SECTION LINES OF SECTION 23, TOWNSHIP 2 NORTH, RANGE 64 WEST OF THE 6TH PRINCIPAL MERIDIAN, WELD COUNTY, COLORADO.

I HEREBY STATE THAT THIS WELL LOCATION CERTIFICATE WAS PREPARED BY ME OR UNDER MY DIRECT SUPERVISION, THAT THE WORK WAS COMPLETED ON 1/10/2017 FOR AND ON BEHALF OF NOBLE ENERGY, INC., AND THAT THIS MAP DOES NOT REPRESENT A BOUNDARY SURVEY, IT IS NOT A LAND SURVEY PLAT OR AN IMPROVEMENT SURVEY PLAT AND IT IS NOT TO BE RELIED UPON FOR THE ESTABLISHMENT OF FENCE, BUILDING OR OTHER FUTURE IMPROVEMENT LINES.

- NOTES:**
- 1) BEARINGS FOR THIS MAP ARE ASSUMED AND BASED UPON GPS OBSERVATIONS MADE BETWEEN MONUMENTS LOCATED AT THE SOUTHEAST CORNER AND SOUTH QUARTER CORNER OF SECTION 35, T.2N., R.64W.
  - 2) HORIZONTAL DATUM IS NAD83.
  - 3) VERTICAL DATUM IS NAVD88 AND ORIGINATES FROM THE LOCAL C.O.R.S. NETWORK, UTILIZING THE GEOID12A MODEL.
  - 4) SEE LOCATION DRAWING FOR VISIBLE IMPROVEMENTS WITHIN 500' OF PROPOSED DISTURBED AREA.
  - 5) SURFACE USE: AGRICULTURAL.
  - 6) INST. OPERATOR: TREVOR DALEY.
  - 7) NEAREST WELL: NO WELLS IN THIS SECTION

**NAD 83 LATITUDE AND LONGITUDE**

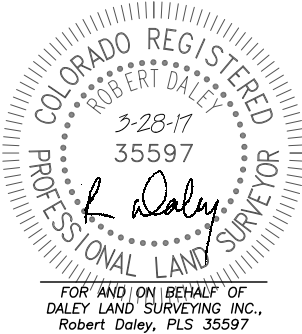
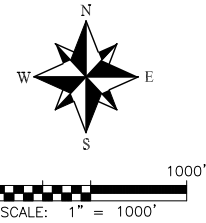
SURFACE LOCATION:		BOTTOM HOLE:	
LATITUDE:	N40.08874°	LATITUDE:	N40.12352°
LONGITUDE:	W104.51173°	LONGITUDE:	W104.51244°
ELEV:	4947'		
PDOP:	1.1		
QTR/QTR:	SE4/SE4		

**NEAREST CULTURAL ITEMS:**

BUILDING:	790'± SE
BUILDING UNIT:	834'± SE
HIGH OCC. BLD. UNIT:	5280'+
DES. OUTSIDE ACTIVITY AREA:	5280'+
PUBLIC ROAD:	393'± S
ABOVE GROUND UTILITY:	850'± E
RAILROAD:	5280'+
PROPERTY LINE:	400'± S

Approximate Top of Producing Zone:  
460' FSL, 920' FEL, Sec 35, T2N- R64W.  
**HAND DRAWN 5/11/2017**  
Depiction was not surveyed and was added by NBL

- LEGEND**
- ◆ FOUND MONUMENT AS DESCRIBED
  - ☀ PROPOSED WELL
  - ⊙ EXISTING WELL
  - BOTTOM HOLE
  - ⊘ ABANDONED WELL
  - ◆ CALCULATED POSITION



**noble energy**

**DALEY LAND SURVEYING, INC.**  
970.302.4159