

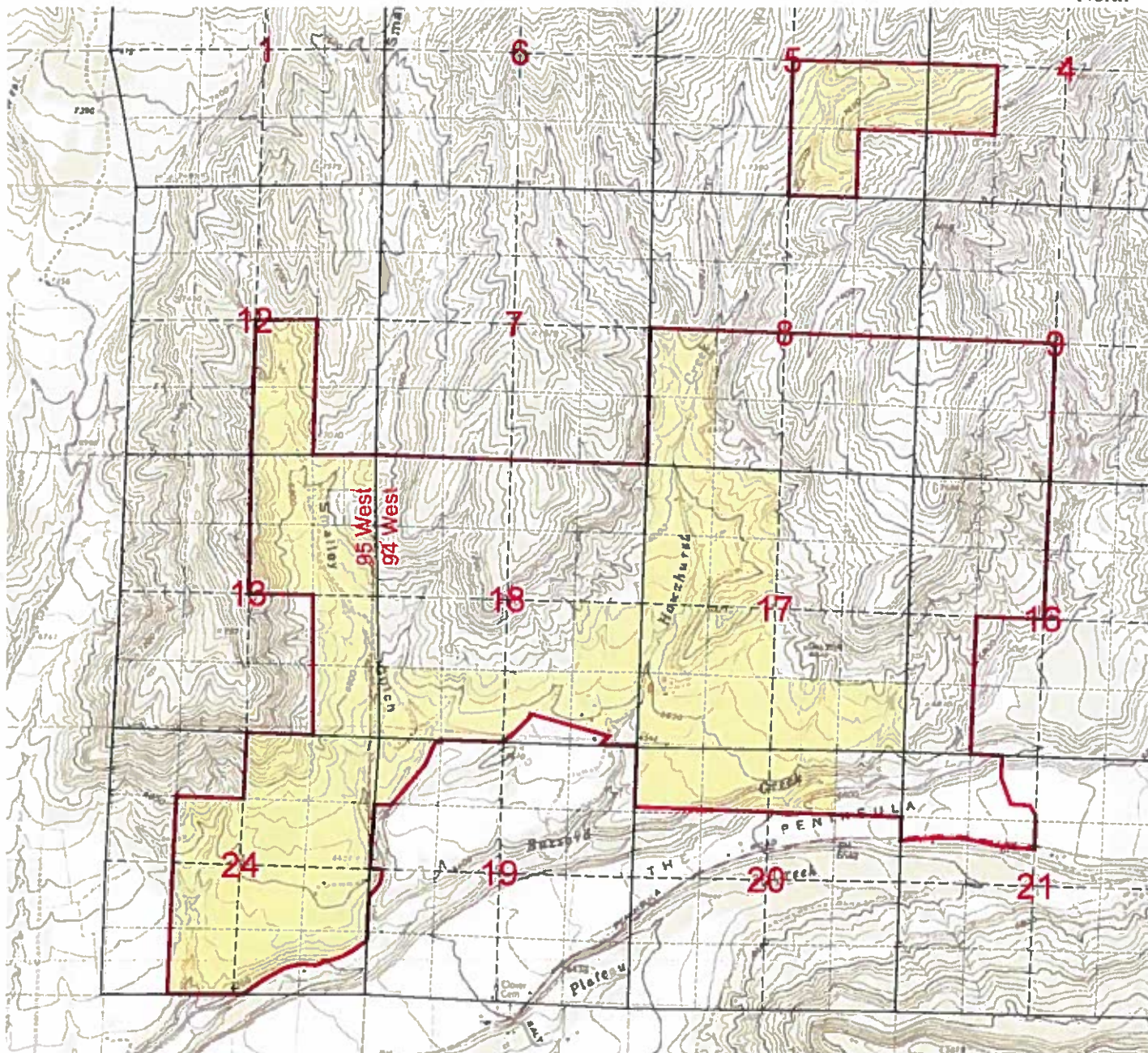
Laramie Energy II

Hawxhurst Ranch Lease Area

Portions of Sections 4, 5, 8, 9, 16, 17, 18, 19, 20 & 21 T9S, R94W of the 6th P.M.

Portions of Sections 12, 13 & 24 T9S, R95W of the 6th P.M.

Mesa County, Colorado



Lease Area=1,660 acres m/l

