

T8N, R60W, 6th P.M.

BISON OIL & GAS II

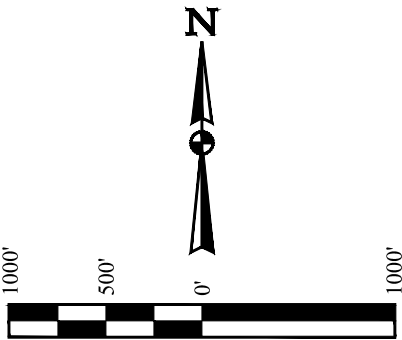
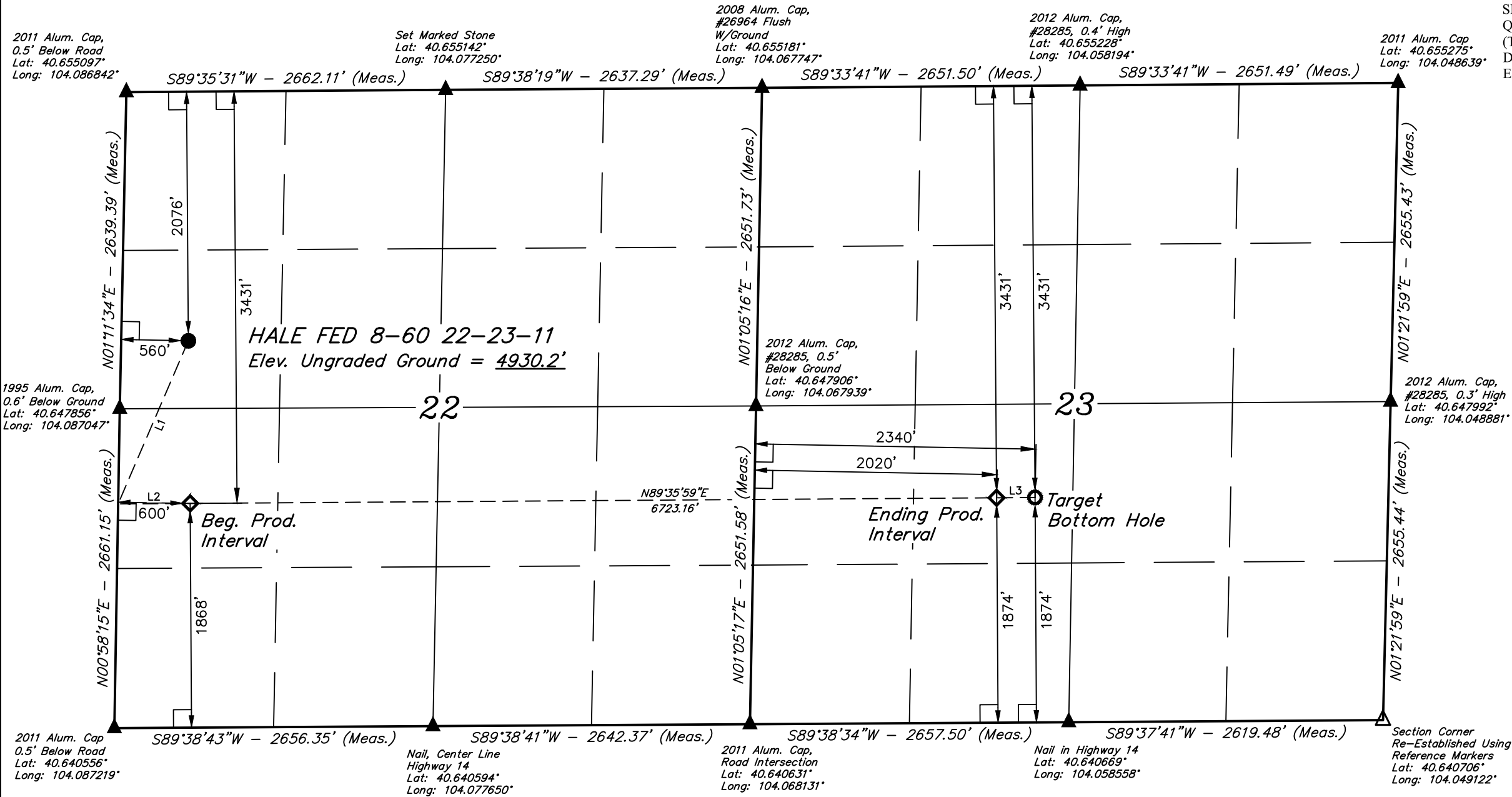
HALE FED 8-60 22-23-11
SW 1/4 NW 1/4, SECTION 22, T8N, R60W, 6th P.M.
WELD COUNTY, COLORADO

BASIS OF BEARINGS

BASIS OF BEARINGS IS A G.P.S. OBSERVATION

BASIS OF ELEVATION

SPOT ELEVATION LOCATED AT THE NORTHEAST CORNER OF SECTION 1, T11N, R63W, 6th P.M. TAKEN FROM THE HEREFORD, QUADRANGLE, COLORADO, WELD COUNTY, 7.5 MINUTE QUAD (TOPOGRAPHIC MAP) PUBLISHED BY THE UNITED STATES DEPARTMENT OF THE INTERIOR, GEOLOGICAL SURVEY. SAID ELEVATION IS MARKED AS BEING 5352 FEET.



CERTIFICATE

THIS IS TO CERTIFY THAT THE ABOVE PLAT WAS PREPARED FROM FIELD NOTES OF ACTUAL SURVEYS MADE BY ME OR UNDER MY SUPERVISION AND THAT THE SAME ARE TRUE AND CORRECT TO THE BEST OF MY KNOWLEDGE AND BELIEF.

REGISTERED LAND SURVEYOR
REGISTRATION NO. 28285
STATE OF COLORADO
JULY 16-17

REV: 1 07-12-17 C.C. (ADD FED TO WELL NAME)

LEGEND:

- 90° SYMBOL
- PROPOSED WELLHEAD.
- PRODUCTION INTERVAL.
- TARGET BOTTOM HOLE.
- SECTION CORNERS LOCATED. (NAD 83)
- SECTION CORNERS RE-ESTABLISHED. (Not Set on Ground.) (NAD 83)

LINE TABLE		
LINE	DIRECTION	LENGTH
L1	S23°18'01"W	1479.86'
L2	N89°35'59"E	600.17'
L3	N89°35'59"E	320.11'

SURFACE LOCATION 2076' FNL 560' FWL	BEG. PROD. INTERVAL 3431' FNL 1868' FSL 600' FWL	ENDING PROD. INTERVAL 3431' FNL 1874' FSL 2020' FWL	TARGET BOTTOM HOLE 3431' FNL 1874' FSL 2340' FWL
NAD 83 (SURFACE LOCATION) LATITUDE = 40°38'57.87" (40.649408) LONGITUDE = 104°05'05.95" (104.084986)	NAD 83 (BEG. PROD. INTERVAL) LATITUDE = 40°38'44.49" (40.645692) LONGITUDE = 104°05'05.77" (104.084936)	NAD 83 (ENDING PROD. INTERVAL) LATITUDE = 40°38'44.88" (40.645800) LONGITUDE = 104°03'38.58" (104.060717)	NAD 83 (TARGET BOTTOM HOLE) LATITUDE = 40°38'44.90" (40.645806) LONGITUDE = 104°03'34.43" (104.059564)
NAD 27 (SURFACE LOCATION) LATITUDE = 40°38'57.92" (40.649422) LONGITUDE = 104°05'04.13" (104.084481)	NAD 27 (BEG. PROD. INTERVAL) LATITUDE = 40°38'44.54" (40.645706) LONGITUDE = 104°05'03.95" (104.084431)	NAD 27 (ENDING PROD. INTERVAL) LATITUDE = 40°38'44.93" (40.645814) LONGITUDE = 104°03'36.76" (104.060211)	NAD 27 (TARGET BOTTOM HOLE) LATITUDE = 40°38'44.95" (40.645819) LONGITUDE = 104°03'32.61" (104.059058)
STATE PLANE NAD 83 (CO. NORTH) N: 1482555.00 E: 3392629.60	STATE PLANE NAD 83 (CO. NORTH) N: 1481200.75 E: 3392664.80	STATE PLANE NAD 83 (CO. NORTH) N: 1481348.96 E: 3399384.59	STATE PLANE NAD 83 (CO. NORTH) N: 1481356.02 E: 3399704.54
STATE PLANE NAD 27 (CO. NORTH) N: 482553.83 E: 2392780.04	STATE PLANE NAD 27 (CO. NORTH) N: 481199.60 E: 2392815.26	STATE PLANE NAD 27 (CO. NORTH) N: 481347.72 E: 2399535.25	STATE PLANE NAD 27 (CO. NORTH) N: 481354.77 E: 2399855.21



UELS, LLC
Corporate Office * 85 South 200 East
Vernal, UT 84078 * (435) 789-1017

SURVEYED BY	ROBERT FISHER	06-30-17	SCALE
DRAWN BY	C.C.	06-30-17	1" = 1000'

WELL LOCATION PLAT