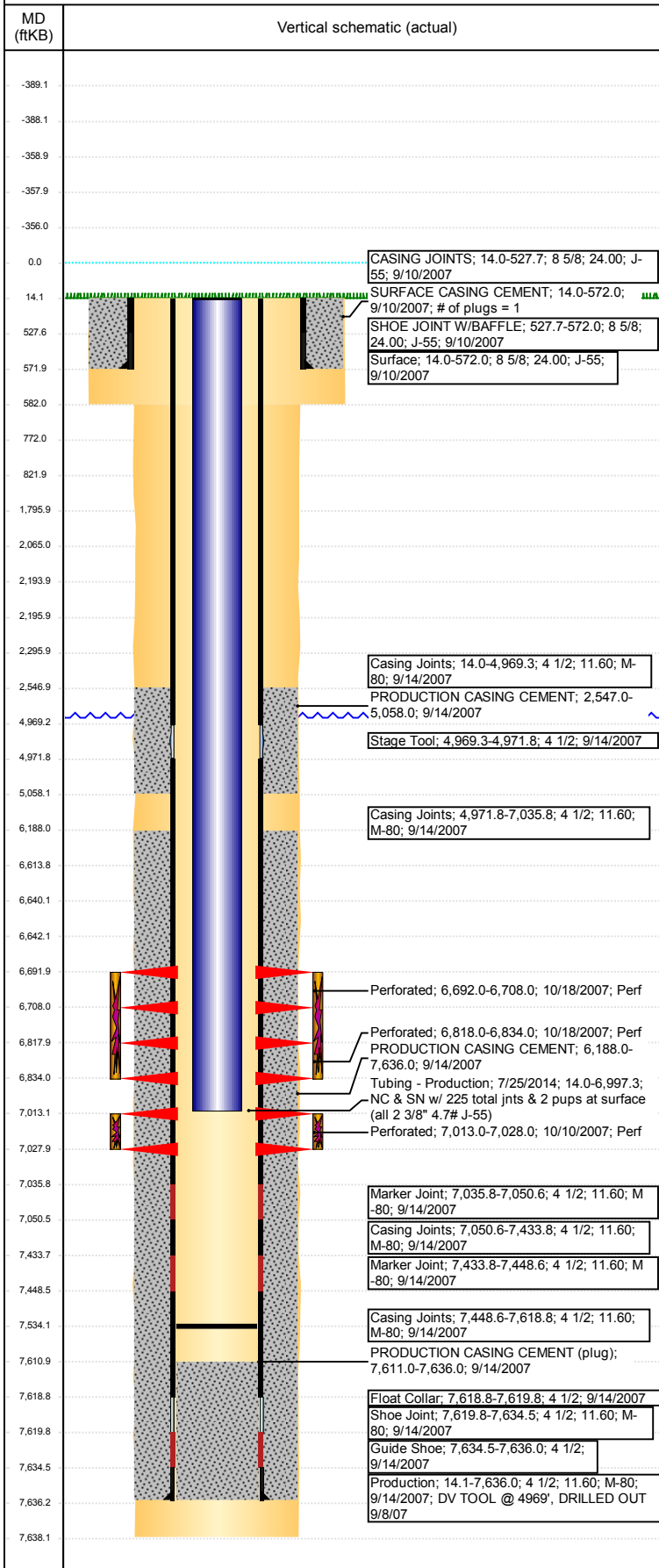


**Well Name: GIBBS F28-17**

VERTICAL - ORIGINAL HOLE, 7/25/2017 4:03:00 PM



## Well Header

API 05-123-24703	Business Unit DJ BASIN	District 15	Well Config VERTICAL
Original KB Elevation (ft) 4,658	KB - GL / MSL (ftKB) 14.00	Spud Date 9/9/2007	P & A Date

Comment  
DV TOOL @ 4969' - DRILLED OUT 9/8/2007

Directions To Well  
WCR 43 & 54, South 2/10, West ~1/10 into

## Congressional Location

Quarter 3 SE	Quarter 4 NE	Section 28	Township 5	Twnshp N/S Dir N	Range 65	Range E/W Dir W
-----------------	-----------------	---------------	---------------	---------------------	-------------	--------------------

## Bottom Hole Location

North-South Distance (ft)	From N or S Line	East-West Distance (ft)	From E or W Line
---------------------------	------------------	-------------------------	------------------

## Plug Back Total Depths

Date	Depth (ftKB)	Method	Com
9/14/2007	7,619.0	CASING TALLY	FLOAT COLLAR
10/1/2007	7,611.0	CASED HOLE LOG	DEPTH LOGGER
1/30/2008	7,534.0	TAG	C/O - W/243 JTS

## Wellbore Sections

Section Des	Size (in)	Act Top, MD (ftKB)	Act Btm, MD (ftKB)
SURFACE	12 1/4	14	582
PRODUCTION	7 7/8	582	7,638

## Zone Statuses

Zone Name	Status Date	Status	Fluid Type	Job	Prod Method
CODELL	10/19/2007	PR	Water	DRILLING/CO...	Flowing
CODELL	1/29/2010	PR			
CODELL	10/27/2016	SI			
NIOBRARA	10/19/2007	PR	Water	DRILLING/CO...	Flowing
NIOBRARA	1/29/2010	PR			

## Casing Strings

### Surface, 572.0ftKB

Casing Description	Run Date	OD (in)	Wt/Len (lb/ft)	Grade	Top, MD (ftKB)	MD (ftKB)
Surface	9/10/2007	8 5/8	24.00	J-55	14.0	572.0

### Production, 7,636.0ftKB

Casing Description	Run Date	OD (in)	Wt/Len (lb/ft)	Grade	Top, MD (ftKB)	MD (ftKB)
Production	9/14/2007	4 1/2	11.60	M-80	14.0	7,636.0

## Cement

Description	Top Depth (ftKB)	Bottom Depth (ftKB)
SURFACE CASING CEMENT	14.0	572.0
PRODUCTION CASING CEMENT	2,547.0	5,058.0
PRODUCTION CASING CEMENT	6,188.0	7,636.0
DUMP BAIL	6,614.0	6,640.0
COURTESY PLUG	2,065.0	2,194.0
COURTESY PLUG	2,196.0	2,296.0
COURTESY PLUG	1,796.0	2,296.0
SHOE PLUG	772.0	822.0
SHOE PLUG	14.1	772.0

## Tubing Strings

Tubing Description	Run Date	String...	ID (in)	Wt (lb/ft)	Grade	Len (ft)	Set De...
Tubing - Production	1/31/2008	2 3/8	2.00	4.70	J-55	6,990.81	
Tubing - Production	7/25/2014	2 3/8	2.00	4.70	J-55	6,983.30	

## Other In Hole

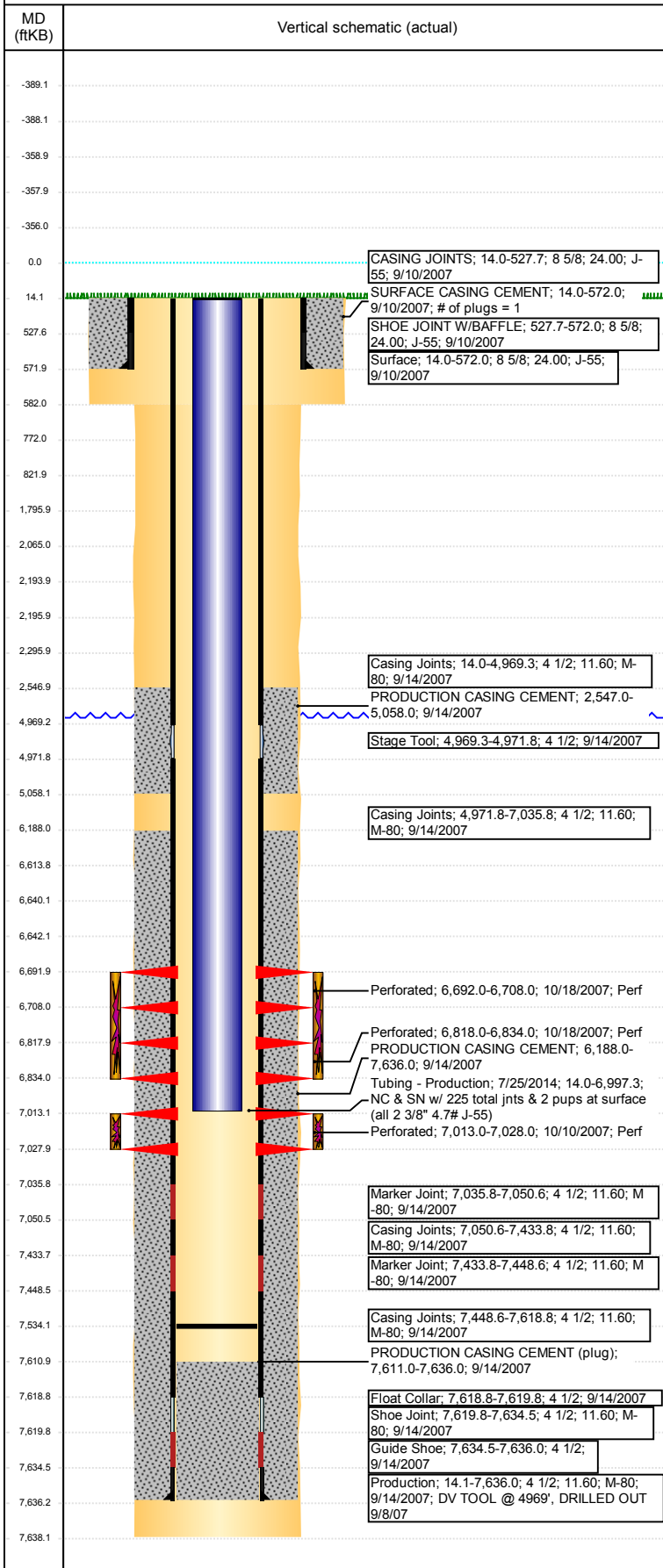
Run Date	Des	OD (in)	Top (ftKB)	Btm (ftKB)
7/21/2017	Cast Iron Bridge Plug	3.99	6,640.0	6,642.0
7/21/2017	CICR	3.99	2,194.0	2,196.0

## Logs

Date	Type	Top, MD (ftKB)	Btm, MD (ftKB)
9/14/2007	Compensated Density	2,700.0	7,611.0

**Well Name: GIBBS F28-17**

VERTICAL - ORIGINAL HOLE, 7/25/2017 4:03:01 PM



Logs			
Date	Type	Top, MD (ftKB)	Btm, MD (ftKB)
9/14/2007	Induction	572.0	7,631.0
10/1/2007	CBL/CCL/GR	5,970.0	7,610.0

Perforation Data					
Linked Zone	Bnch/St g	Sum of Entered Shot Total	Top (ftKB)	Btm (ftKB)	Date
		0	2,296.00	2,296.00	7/21/2017
NIORARA, ORIGINAL HOLE		64	6,692.00	6,708.00	10/18/2007
NIORARA, ORIGINAL HOLE		64	6,818.00	6,834.00	10/18/2007
CODELL, ORIGINAL HOLE		60	7,013.00	7,028.00	10/10/2007

**Total (Sum)** **188**

Stimulation Intervals		
Start Date	Primary Job Type	
10/18/2007	DRILLING/COMPLETION - ORIGINAL	
Technical Result	Tech Result Details	Tech Result Note

Comment

Start Date	Primary Job Type	
10/18/2007	DRILLING/COMPLETION - ORIGINAL	
Technical Result	Tech Result Details	Tech Result Note

Comment