

## **ATTACHMENT 1**

### **United States Forest Service**

### **Gas Well Surface Use Plan Of Operations (SUPO) Amendments And Gas Pipeline Special Use Permit (SUP) COL432 Amendment #3**

### **CONDITIONS OF APPROVAL (COAS)**

#### **For**

#### **BP America Production Company's**

EAST SAULS CREEK 26 1-1,  
EAST SAULS CREEK 26 1-2,  
YANKEE FEDERAL A2 HST,  
EAST SAULS CREEK 26 2-1,  
EAST SAULS CREEK 26 2-2,  
YANKEE FEDERAL A1 HST,  
EAST SAULS CREEK 35 3-1,  
EAST SAULS CREEK 35 3-2,  
YANKEE FEDERAL B2 HST,  
EAST SAULS CREEK 35 4-1,  
EAST SAULS CREEK 35 4-2,  
YANKEE FEDERAL B1 HST,  
FISCHER-MARK FEDERAL B3 HST  
FISCHER-MARK FEDERAL B5  
FEDERAL 05-01 1 HST, and  
FEDERAL 08-01 2 HST

#### **Coalbed Methane Natural Gas Wells,**

#### **And**

#### **Three Associated Natural Gas Pipelines**

**National Forest System Land Surface and Federal Subsurface Mineral Estate  
Generally located in T34N, R6W, and T35N, R6W (Two Maps and One Table Attached for  
Details)  
La Plata County, CO  
6/15/17**

In addition to the terms of the lease, the following surface occupancy requirements shall apply. Modifications and exceptions to these requirements must be approved in writing by an authorized representative of the U.S.D.A. Forest Service (FS), as appropriate. The following conditions shall be implemented in accordance with the requirements of the Northern San Juan Basin CBM (NSJB) FEIS and ROD including any site-specific analyses, monitoring, and mitigation measures applicable to the project.

I. PROJECT REQUIREMENTS

- 1) The FS representative for this project is Walt Brown, San Juan National Forest Geologist, 970-385-1372 (office), 970-764-0377 (cell), [wabrown@fs.fed.us](mailto:wabrown@fs.fed.us) (email). An Operator representative shall be designated for on the ground activities.
- 2) In an emergency, appropriate action shall be taken and the FS representative shall be promptly notified. Emergencies should also be reported to the San Juan Public Lands Dispatch Center at 970 385-1324. Any resource damage resulting from, or in response to, the emergency shall be rehabilitated as soon as practicable in a manner approved by the FS representative.
- 3) The FS representative and Operator representative shall schedule and attend a pre-work meeting before any on the ground project activities begin. The meeting should also be attended by any subcontractors that will be working on the project. Coordination meetings to discuss project activities shall be scheduled as needed by either the FS Representative or the Operator at a mutually agreed upon time and location. Generally, such meetings should occur on at least a weekly basis until the project is finished.
- 4) The Operator will notify the FS representative at least 48 hours before project activities begin on the ground.
- 5) A traffic control safety plan shall be submitted by the Operator and accepted by the FS before project activities begin. The plan shall address all aspects of traffic control. All necessary signs must be installed before construction activities begin. Signs must not be nailed to trees.
- 6) Project vehicle traffic must stay on existing roads and not go beyond the existing road corridor's disturbance, unless personal or public safety requires a vehicle to leave the road corridor. If a vehicle leaves the road corridor, the occurrence (time, date, and location) will be reported to the FS representative within two business days and any resource damage should be remediated appropriately.
- 7) Cultural resources mitigation for the Fischer Mark Federal B4 Pipeline Project: A temporary fence must be installed before ground disturbing activities start between site 5LP10473 and the pipeline corridor (see attached map), and an archeological monitor is required to be present for ground disturbing activities within 100 feet of site 5LP10473.
- 8) All activities must meet the design requirements for the construction, interim, and final reclamation phases shown in the approved BLM APDs and Sundries for the wells listed above, unless otherwise authorized by the FS. Each activity phase must be appropriately staked and flagged for construction and reviewed by the FS representative immediately prior to commencement of project activities.
- 9) As-built drawings showing final locations of pipelines built in road corridors as part of this project shall be provided to the FS representative within 30 days of project completion.
- 10) Locations for any above ground facilities associated with this project, including valve sets, pipe cans, pig launchers/receivers, corrosion prevention/detection, etc., must be staked on the ground and accepted by the FS representative before construction for such facilities can begin. The staking must include the actual area of proposed disturbance to construct the facility. Any above ground facilities should be painted sudan brown, unless otherwise authorized by the FS.
- 11) A storm water management plan shall be developed to address all construction, reconstruction, maintenance, and operational activities and submitted to FS representative.

This plan shall conform to all EPA and Best Management Practices (BMP) requirements, as well as the requirements in NSJB FEIS Section 3.6, Surface Water Resources.

- 12) All storm water management controls needed during the construction phase of the project, including temporary culverts and wattles, must be installed before project activities can begin. Erosion control structures, like wattles and soil blankets, that are in place long term shall be made with biodegradable materials.
- 13) Elk and Deer Habitat Mitigation Measure: Every five years, unless otherwise determined by the Authorized Officer, operators conducting oil and gas activities in the NSJB EIS project area will complete elk and deer habitat enhancement project(s). See NSJB FEIS page 3-289, section 3.9.6.4.2 for details.
- 14) Topsoil must be segregated and stored separately from subsurface materials to avoid mixing during construction, storage and interim reclamation. Subsurface materials should never be placed on top of topsoil material at any point during project activities.
- 15) Construction activities are only allowed during the period beginning on May 1 and ending on November 30 of any given year unless otherwise authorized by the FS in writing.
- 16) Construction activities should be limited to daylight hours; well outside of dawn and dusk periods whenever possible.
- 17) Travel Management Plan - The project area is located on SJNF land that is open to public motorized and non-motorized vehicle use, and other public recreation activities. If the FS deems necessary an appropriate travel management plan including signage, and controls such as gates or boulders, shall be proposed by the Operator, accepted by the FS, and implemented by the Operator. In addition, the FS may close areas near the wells listed above to public entry to provide for public safety.
- 18) Routine activities that are conducted to maintain safe operation of the well site such as daily site visits using a typical oil field pickup truck, minor repairs of surface facilities using equipment that can be transported by a typical oil field pickup truck, or removal of produced water by truck can be conducted year-round. All non-routine activities must be conducted during the period beginning on May 1 and ending on November 30 of any given year unless otherwise authorized by the FS in writing.
- 19) Schedule routine activities, including snow plowing, to occur between 9:00 am and 3:00 pm during the period beginning December 1 and ending on April 30 of any given year unless otherwise authorized by the FS in writing.
- 20) If existing cattle guards or fences are damaged during operations, they must be repaired to at least their pre-disturbance condition.
- 21) During project activities, if paleontologic or cultural resource artifacts or materials are exposed, or raptor nests are discovered, operations in the vicinity shall be halted and the FS representative shall be notified.
- 22) Air Quality: 1) Dust abatement measures may be required during some phases of well development, heavy maintenance, or operations, depending on seasonal conditions, resource impact and traffic considerations. The FS representative will determine if such measures are required during operations. 2) Emission Control (small stationary gas field engines built within the project area): All internal combustion gas field engines of less than or equal to 300 design-rated horsepower must not emit more than 2 grams of nitrogen oxides (NOx) per horsepower-hour. This requirement does not apply to gas field engines of less than or equal to 40 design-rated horsepower. 3) Emission Control (large stationary gas field engines built within the project area): All internal combustion gas field engines

greater than 300 design-rated horsepower must not emit more than 1gram of NO<sub>x</sub> per horsepower-hour.

- 23) Pitless Drilling Requirements – pitless, self-contained drilling systems shall be used for this project. Pits for fluid management or storage are not allowed. If tanks are not used for cuttings storage, then storage areas for cuttings can be temporarily built on top of the pad. No excavations can be made into the surface of the pad when building cuttings storage areas. Cuttings storage areas will be bermed on all sides to prevent any stormwater, soil, or other material from entering or leaving the storage area. During drilling operations the temporary bermed “cuttings storage area” shall be lined with a 40-60 mil impermeable liner or equivalent. The liner must cover the berms. The size of the storage area and height of the berms shall be sufficient to store the estimated volume of cuttings from the well bore and provide one foot of freeboard above the maximum depth of cuttings in the storage area. Only dry cuttings may be stored in the cuttings storage area. Any cement wash or other fluids shall not be mixed with dry cuttings, but must be placed in a self contained tank and removed for disposal at an approved off-site location. If, for any reason, fluids do accumulate, the fluids must be removed from the storage area within 24 hours and disposed at an approved location. Upon completion of drilling operations, the cuttings shall be disposed of as soon as possible. Cuttings shall be sampled for compliance with COGCC pit closure standards (Table 910-1). The sample results shall be submitted to the FS and BLM. If all results meet closure standards, the dry cuttings may be buried in an unlined trench, located in cut material in the area shown on the accepted designs for the gas well pads. Cuttings must be covered with a minimum of three (3) feet of clean compacted backfill material.
- 24) A closed looped system will be used. Drilling mud will be recycled or reused where possible. All drilling mud that cannot be reused will be disposed of at an authorized facility. The drill cuttings recovered from drilling will be temporarily stored onsite in an open tank, which allows for natural evaporation. Cuttings will then be transported to a permitted facility for disposal. The cuttings tank and temporary above ground tank will be in containment with a liner and inspected regularly. Containment devices will be used beneath connects. The entire location will also be surrounded with a compacted tertiary berm that will prevent and materials from leaving location.
- 25) Prior to the spudding the Fischer-Mark Federal #B-5 gas well, the operator is required to obtain groundwater samples from the HALCORE, LTD. residential water well (Receipt #9701552, Permit 252907) in Section 9-T34N-R6W and obtain field parameters (including H<sub>2</sub>S & field pH measured using field test methods, and field observations such as odor, water color, sediment, bubbles, and effervescence) and perform initial baseline testing and analyses (including all major cations and anions, TDS, iron, manganese, selenium, barium, TPH, BTEX, nitrates and nitrites, dissolved methane, SAR, presence of bacteria, and specific conductance) in this offset residential water well. Additional water well sampling and testing may be required at any time in response to complaints from the water well owner. Copies of all test results shall be provided to the water well owner and the BLM (P. Leschak, BLM Tres Rios Field Office, 161 Burnett Drive, Durango, CO 81301, 970-769-3254, pleschak@blm.gov) within 90 days of collecting the samples.
- 26) STORAGE of NON-FRESHWATER FLUIDS: All non-freshwater fluid storage containers/tanks (i.e. produced water storage tanks, chemical tanks, fuel tanks, etc.) must be located within an impermeable, lined (or equivalent) secondary containment structure

capable of containing at least 110% of the storage capacity of the largest tank/container. If a liner is used, it can be no less than 24 mil-thick so the integrity of the liner will be maintained while using heavy equipment during drilling, completion, and testing operations.

- 27) **HIGHLY SALINE MUD USAGE:** To prevent soil degradation and surface/groundwater contamination from potential leaks or spills while utilizing highly saline mud systems (i.e., mud systems greater than 25,000 ppm TDS), the operator must utilize the following spill prevention and contaminant best management practices when using or storing any fluids over 25,000 ppm Total Dissolved Solids (TDS) during drilling, completion, and testing operations:
- Develop and implement a spill prevention, control, and countermeasure plan, and have the plan available upon request on site during drilling, completing, and testing.
  - Install an impermeable, 24 mil-thick liner below all equipment associated with handling, processing, or storage of highly saline muds (i.e., >25,000 ppm TDS) including, but not limited to, the closed loop system, mud pumps and processing system, drill cuttings collection and handling areas, storage equipment containing spent mud and flow-back fluids, etc.
  - All soil contaminated from saline mud, saline drill cuttings, etc. on or off the pad must be tested and/or remediated/removed appropriately as soon as possible.
- 28) **Sound mitigation plan** – The FS will work with the operator to finalize the facilities, including sound walls or other noise mitigation measures, if they prove to be necessary.
- 29) As required by the 2005 Energy Policy Act five year timeframe for the gas well SUPOs, if any of the wells listed above have not been spudded by September 17, 2018, this approval will expire and all operations related to preparing to drill the well must cease.
- 30) As required by the 2005 Energy Policy Act five year timeframe for the gas pipelines SUP COL432 Amendment #3, if installation of the three pipelines has not begun by 3/31/2019, this approval will expire and all operations related to preparing for pipeline installation must cease.
- 31) **Monitoring** – All facets of the surface operation shall be monitored by the FS to assure compliance. This will begin upon receiving notice that the operator will commence work and will continue throughout the active phases of well development on a regular visitation process and will continue on a periodic visitation until abandoned. Refer to the NSJB FEIS and ROD for monitoring and mitigation measures applicable to this project.
- 32) The Operator shall maintain an adequate quality control system and perform inspections as necessary to ensure that work on this project conforms to all applicable requirements, including implementation of all required mitigation measures. Such quality control methods and inspections must be documented and provided to the FS if requested.

## II. WELL SIGN

A sign shall be placed on the well pad following construction activities with the following minimum information:

- A. Operator Name
- B. Well Name and Number
- C. Legal Location (1/4-1/4, Section, Township and Range)

- D. County and State
- E. Lease Number.

### III. FIRE PREVENTION

To the extent practical, the operator shall take measures to prevent uncontrolled fires on the area of operation and to suppress uncontrolled fires resulting from operations. All fires must be immediately reported to the FS representative and to the San Juan Public Lands Dispatch Center at 970 385 1324. Project activities must comply with the attached Fire Plan for Industrial Operations.

### IV. PROJECT WORK AREAS

The project work areas shall be kept to the minimum necessary for safe operation. The project work area boundaries shall be clearly marked (e.g., “T-Post and Twine) and approved by the FS representative prior to project activities. No project activities or disturbances are allowed outside the project work area boundaries unless authorized. The project work area boundaries must be maintained until after interim reclamation of project facilities has been completed.

### V. WELL PAD CONSTRUCTION

- 1) The pads shall be built and reclaimed to the specifications shown in the approved BLM APDs and Sundries for the wells listed above, unless otherwise authorized by the FS. Topsoil shall be stripped and stored, for the use in the reclamation of the site. The FS representative shall approve the topsoil storage area shown on the accepted designs for the project. All cut bank areas shall have the stored topsoil spread immediately after the well pad has been constructed. The remaining topsoil shall be stored to accommodate its placement after drilling operations are completed. Long-term topsoil storage, if needed, shall occur in a manner that ensures soil viability, including storage depths and revegetation sufficient to maintain soil productivity until final reclamation begins.  
Provisions shall be made to divert surface water around and away from the well pad. The well pad should be constructed so that water does not collect or pond within the pad area. Construct berms or v-ditches around the pad with controlled, armored drainage to prevent erosion where necessary. Filter or settle pad runoff water prior to entering any drainage using excelsior logs, settling ponds or other methods.

### VI. ROAD RECONSTRUCTION, MAINTENANCE, AND SNOW REMOVAL

- A. NFS roads 131 and 131A will be reconstructed after one of the three gas pipelines is placed in the existing road corridor. The primary objective for road reconstruction is to provide a safe, well-drained, maintainable aggregate surfaced road for constant service and reasonable all-weather structural support for trucks accessing well pads on public lands. The “Gold Book” titled ***OIL AND GAS Surface Operating Standards for Oil and Gas Exploration and Development*** describes the minimum guidelines to be used to develop the road design necessary to meet the primary objective. All roads reconstructed on public lands shall be designed and constructed under the direction of a registered professional engineer, unless otherwise agreed to by the FS. The well access roads will be considered a low volume, single lane road with turnouts built for the specific purpose of accessing, drilling, maintaining and operating a natural gas well, and must meet the requirements of

the AASHTO Publication “*A Policy on Geometric Design of Highways and Streets*”, unless otherwise authorized by the FS. The following requirements also apply:

- 1) A gravel surface shall be constructed for all weather access. An acceptable soil strength test, such as the C.B.R. Test, shall be performed to determine the gravel depths required for the projected vehicle loads and seasons of use. A pavement design method approved in writing by the FS representative shall be used to determine the required gravel depths. The subgrade width must be wide enough to provide for 3:1 side slopes on the surfacing and a 12-16 foot travel width. Both the sub-grade and gravel surfacing shall be placed using layer placement method and using a roller for compaction. The gravel material shall be placed in horizontal layers not exceeding 12 inches prior to compacting, except when the material contains rock more than 9” in diameter, in which case layers may be of sufficient thickness to accommodate the material involved. Compaction equipment shall be operated over the full width of each layer until visible deformation of the layer ceases or, until the compacting equipment has completed three (3) complete passes.
- 2) Traffic and regulatory warning signs shall be placed in accordance to MUTCD standards.
- 3) All disturbed areas, including cut and fill slopes, shall be revegetated with the seed mix in Section VIII below.
- 4) The operator must provide for an adequate inspection and quality control system to ensure compliance with all specifications, designs, and drawings. The operator shall take all necessary precautions for the protection of the work and safety of the public and employees during construction of the road.
- 5) Construction shall be limited to when soil conditions will meet compaction requirements and will not result in ruts deeper than 4 inches. Unless otherwise agreed all compaction shall be accomplished with layer placement. Generally, conditions are considered to be too wet for construction or travel if soils within 4 inches of the surface can be rolled into threads that are 3 mm in diameter without breaking or crumbling.
- 6) Erosion control measures and BMPs shall be used to contain sediment inside the disturbance limits during construction and prior to the road being surfaced with gravel and vegetation established on cut and fill slopes. Erosion control structures will be maintained until successful revegetation is established on cut and fill slopes.
- 7) Use filter strips and sediment traps if needed to keep all sand sized sediment on the land and disconnect disturbed soil from streams, lakes, and wetlands. Disperse runoff into filter strips.
- 8) Key sediment traps into the ground. Clean them out when 50% full. Remove sediment to a stable, gentle, upland site and revegetate.
- 9) Implement structural erosion and sediment controls such as interim or permanent waterbars, detention ponds, straw bales, silt fenced, earth dikes, and inlet and outlet protection. Provide non-structural erosion control practices such as interim and permanent and temporary seeding, revegetation, and geotextiles.
- 10) Implement BMPs to slow or reduce the flow of surface-water runoff across disturbed areas, including diversion of surface runoff around facilities and installing erosion control devices to prevent sedimentation of nearby water bodies.
- 11) Where applicable, the above measures are also required for well pad and pipeline construction.

**B. Road Maintenance**

The operator shall maintain all public roads used in conjunction with operations as herein outlined:

- 1) Remove slides, boulders, fallen timber, overhanging brush, and other material obstructing safe road sight distance and travel.
- 2) Replace fills and portions of fills lost and/or which have settled below the original grade and cross-section. Gravel shall be bladed and shaped. Gravel lost during use and maintenance shall be replaced.
- 3) Keep drainage channels, ditches, culverts and bridges clear of debris and functioning as intended.
- 4) Repair fences, gates, cattle guards, culverts, bridges and other structures to standard specifications.
- 5) Blade and shape surface and shoulders to maintain a suitable riding surface. Earth and debris from side ditches, slides, or other sources must not be left on the road or mixed into the surface portions of the road. Blading shall not undercut banks. Gravel or other selected surface material shall not be bladed off the surface of the road. Material from slides or other sources requiring removal from the road shall not be deposited in streams or stream channels or at locations where it will wash into streams and cause damage through silting or obstruction of the streams or reservoirs.
- 6) All maintenance shall be performed as needed, in a timely manner or when directed by the FS representative. In addition, at the end of each operating season, maintenance work shall be performed to minimize damage from adverse weather. Such work shall include final blading to remove ruts and other irregularities that would prevent normal surface runoff, and final clearing of ditches and culverts to ensure satisfactory functioning of the road drainage system.

**C. Snow Removal**

The operator may remove snow from the area as necessary to maintain safe and reasonable operations of project facilities. Such removal must be done in a manner to preserve and protect roads during operations to the extent necessary to ensure safe and efficient transportation and to prevent excessive erosion damage to roads, streams and other resources.

Snow removal work shall include the following:

- 1) Removal of snow from all of the traveled way, including turnouts for safe and efficient use.
- 2) Culvert inlets shall be maintained in a functioning condition without snow plowed into them so the drainage system will function properly.
- 3) All material, including snow and ice, removed from the road surface shall be deposited away from drainages or stream channels at FS representative approved locations.
- 4) Banks shall not be undercut, nor shall gravel or other surfacing material be bladed off the road. Gravel lost or bladed off the road during snow plowing operations shall be replaced.
- 5) Ditches and culverts shall be kept functioning during operations and upon completion of operations.



- 6) “Snow Berm” is herein defined as a dike of snow, resulting from the operator’s snow removal operations, which extends above the surface of the traveled way. The operator shall space, construct, and maintain drainage holes in the snow berm to obtain surface drainage without discharge on erodible fills. The operator shall remove snow berms or construct drainage holes at the end of winter operations or before spring breakup, whichever is sooner.
- 7) Dozers may be used to plow snow with written approval of the FS representative.
- 8) Equipment used to plow snow shall be equipped with shoes or runners to keep the blade a minimum two inches above the surface of the road, unless otherwise agreed to in writing by the FS representative.
- 9) The FS representative shall notify the operator in writing if surfacing material has been bladed off the surface of the road. The notice must state the number of road miles (rounded up to the next 0.1 mile) and the cubic yard equivalent of surfacing bladed off. The FS representative calculation of the cubic yardage will be available for review. Upon such notice, the operator shall replace the surfacing material, in kind, no later than 90 days after notification, unless otherwise agreed to in writing.

#### VI. PIPELINE CONSTRUCTION

Three gas pipelines are proposed as part of this project (see attached map and table). The pipeline system (mechanical components as well as construction and reclamation plans) must meet all applicable regulations and be designed and constructed under the direction of a professional engineer registered in the State of Colorado, unless otherwise authorized by the FS. The pipelines must be constructed to the specifications shown in the approved SUP COL 432 Amendment #3. In addition to the applicable requirements from Sections I., III., IV., and V. above, the following requirements apply:

- 1) Construction shall be limited to when soil conditions will meet compaction requirements and will not result in ruts deeper than 4 inches. Unless otherwise agreed all compaction shall be accomplished with layer placement. Generally, conditions are considered to be too wet for construction or travel if soils within 4 inches of the surface can be rolled into threads that are 3 mm in diameter without breaking or crumbling.
- 2) Trenches left open overnight shall be equipped with dirt or plank wildlife escape ramps at regular intervals.
- 3) Erosion control measures and BMPs shall be used to contain sediment inside the disturbance limits during construction and prior to the road being surfaced with gravel and vegetation established on cut and fill slopes. Erosion control structures will be maintained until vegetation is established on cut and fill slopes.
- 4) Copies of any permits for this project needed from the Army Corps of Engineers shall be provided to the FS before project activities begin.
- 5) Copies of spill prevention and pipeline strike contingency plans must be provide to the FS before construction activities begin and made available to on-site employees during construction.
- 6) Minimize erosion at sites located in steep terrain during the construction phase by measures such as contouring, waterbars, temporary ditches, and detention basins, and minimize the period of disturbance.

- 7) Use filter strips and sediment traps if needed to keep all sand sized sediment on the land and disconnect disturbed soil from streams, lakes, and wetlands. Disperse runoff into filter strips.
- 8) Key sediment traps into the ground. Clean them out when 50% full. Remove sediment to a stable, gentle, upland site and revegetate.
- 9) Implement structural erosion and sediment controls such as interim or permanent waterbars, detention ponds, straw bales, silt fenced, earth dikes, and inlet and outlet protection. Provide non-structural erosion control practices such as interim and permanent and temporary seeding, revegetation, and geotextiles.
- 10) Implement BMPs to slow or reduce the flow of surface-water runoff across disturbed areas, including diversion of surface runoff around facilities and installing erosion control devices to prevent sedimentation of nearby water bodies.
- 11) Pipeline construction that crosses ephemeral, intermittent, or perennial streams would require additional mitigation measures. Digging of new open trenches shall not occur more than one week prior to laying pipelines within 100 feet of stream crossings. Within one week post pipeline placement within 100 feet of stream crossings, open trenches must be backfilled, stabilized, and must provide adequate cross drainage.
- 12) Any pipeline construction in areas of known or potential landslide areas shall require a design accepted by the FS representative prior to construction that minimizes to acceptable levels the risk that water from broken or leaking pipelines could activate landslides. Such a design could include leak detection systems or secondary containment systems (e.g., pipe-in-pipe).
- 13) Stockpiling topsoil, spreading topsoil as soon as pipeline construction is completed and prompt revegetation of disturbed areas are required elements of pipeline construction if the pipeline is outside of a road corridor.
- 14) Pipelines that cross stream channels on the surface should be located above the 100-year flood elevation. Where pipelines will be buried under stream channels, an analysis of channel degradation and scour should be completed to ensure the lines are not exposed and broken during extreme runoff events. Without such an analysis, pipeline crossings should be excavated to bedrock and placed beneath all alluvial material. The level of the pipe should be held constant at that same elevation across the floodplain. If the line is placed at shallower depths beneath the floodplain, channel migration may expose the line where it is not designed to pass beneath the channel. (This is to prevent breakage and water contamination during high flow events.)

## VII. OPERATIONS

### A. Production

- 1) During all operations, the operator shall maintain structures, equipment and other facilities in a safe, neat and workman like manner.
- 2) A Spill Contingency Plan shall be provided to the FS representative if requested. A copy of this Plan must be kept on file at the operator's project office.
- 3) In the event of a spill or leak meeting FS, BLM, or COGCC reporting requirements, the FS representative must be immediately notified. Final cleanup operations for the spill or leak must be approved by the FS representative who will recommend additional action as necessary.

- 4) Certifications or approvals issued by State Agencies above and beyond federal requirements will be accepted.

B. Wildlife Resources

- 1) Nets, screens or covers will be installed over all fluid pits, vents, tanks, and equipment openings to prevent wildlife mortality or wildlife contact with well products, fluids, or equipment openings. More information can be obtained at the U.S. Fish and Wildlife Service's wildlife contaminants website: (<http://mountain-prairie.fws.gov/contaminants/contaminants1c.html>).
- 2) Unless otherwise authorized by the FS, automated monitoring systems must be installed at well and pipeline facilities to minimize vehicle trips and reduce human/wildlife conflicts.
- 3) To the extent practicable, use noise reduction technologies at all facilities during construction, testing and operation phases.
- 4) Prohibit activities within 300 feet of any occupied raptor nests during the period May 1 to July 31.
- 5) Schedule routine maintenance activities to occur between 0900 and 1500 hours at facilities during the period beginning December 1 and ending April 30 of any given year.

C. Sanitation and Garbage

- 1) A portable toilet shall be made available during multi-day construction and maintenance activities. Sewage shall be contained and disposed of at a designated sanitary disposal facility.
- 2) The well pad and adjoining areas shall be kept in a neat and safe condition during all phases of the operation.
- 3) The well pad, adjoining area, and access road must be cleaned of all trash, materials and equipment within five days of termination of construction or heavy maintenance operations. Cleanup operations also include removal of all flagging, wooden lath, signs and other identifying devices from public lands. The Operator is also responsible for cleanup and maintenance of their facilities, including access roads, until final reclamation has been completed and approved by the FS representative.
- 4) The operator shall dispose of refuse from this use, including waste materials, garbage and rubbish of all kinds by removing it from public lands.
- 5) If trash is stored on site prior to complying with 5. above, the trash must be stored in a bear-proof manner.

VIII. RECLAMATION

- A. Bonds - The FS has determined that BP America Production Company's existing nationwide bond is adequate for this project.
- B. Reclamation Plans: Interim and final reclamation must meet the standards in this document and in the APDs and Sundries for the well listed above, unless otherwise authorized in writing by the FS. Reclamation must address the four components of successful reclamation described below.
- C. Interim Reclamation: Interim reclamation measures should be initiated when facility construction activities are completed. Interim reclamation measures include recontouring

and revegetating all areas of facilities (including access roads, pipelines and well pads) not needed for long-term operations. The FS representative may require additional measures for interim reclamation to minimize long-term disturbance on or around project facilities.

- D. Final Reclamation: If the well is not productive initially or at the point in time when it becomes un-economic, the entire well site and well access roads shall be fully reclaimed, unless otherwise directed by the FS or the private surface owner.

1) Well Pads, Well Access Roads and Ancillary Facilities

- (a) The well site, ancillary facilities, and associated well access roads shall be re-contoured to pre-construction conditions. Gravel surfacing can be buried on site as long as there is at least one foot of soil cover.
- (b) Topsoil shall be respread over the entire disturbed area.
- (c) All areas of soil disturbance or compaction associated with the project shall be scarified to at least a 4-inch depth and drainage structures installed at FS representative specified locations and revegetated as described below.

2) Reclamation, Revegetation, and Weeds

- (1) Certified weed-free straw mulch, hydromulch, or erosion control blankets are recommended following all seeding activities, particularly on sites with slopes greater than 20 percent.

(2) Reclamation Standards

The four components of successful reclamation are recontouring, revegetation, soil erosion, and noxious weeds. Monitoring of these standards by the federal agency should occur one year after reclamation efforts are initiated, and evaluation for compliance with these standards will occur two years after reclamation efforts are initiated.

- (a) Recontouring Standard: The recontouring component will be considered successful when reclaimed sites are recontoured back to the original contour, and blend in as naturally as possible with the topography of adjacent lands.
- (b) Revegetation Standard: Revegetation will be considered successful when the percent canopy cover of desirable vegetation on the site is at least eighty percent of the canopy cover of the desirable vegetation on the site before the disturbance or at least eighty percent of the canopy cover of the desirable vegetation on a reference area for the site, as determined by a visual appraisal. Definitions: 1. Desirable Vegetation: Native plant species, unless the vegetation on the reference area or the site before it was disturbed included acceptable non-native plant species, in which case those non-native plant species can be included in the 80 percent canopy cover requirement with FS approval. 2. Reference Area: A relatively undisturbed piece of land (preferably adjacent to or near the site needing revegetation) that has soils, topography, and a plant community similar to the site being revegetated. Reference areas will be approved by the FS. 3. Visual Appraisal: Ocular or transect methods are acceptable. The Ocular Plant Composition or the Cover-Frequency Transect methods, as described in the Forest Service Region 2 Rangeland Analysis and Management Training Guide, are recommended. 4. #PLS = pounds of pure live seed. 5. Seeding rates listed below are for drilled seed. Broadcast rates should be doubled.

Revegetation Seed Mixes: Unless otherwise authorized, a minimum of two native grass and one wildflower seed species from the list below will be used at the recommended rates. One of the annual species listed below can also be used along with the native species.

Native Grass Seed Species

Arizona fescue ( <i>Festuca arizonica</i> ), variety Redondo	4#PLS/acre
Western wheatgrass ( <i>Pascopyrum smithii</i> ), varieties Barton/Rosanna	10#PLS/acre
Indian Ricegrass ( <i>Oryzopsis hymenoides</i> ), varieties Paloma/Rimrock/Nezpar	6#PLS/acre
blue grama ( <i>Bouteloua gracilis</i> ), varieties Alma/Hachita/Lovington	3#PLS/acre
muttongrass ( <i>Poa fendleriana</i> )	3# PLS/acre
junegrass ( <i>Koeleria macrantha</i> ), varieties Prairie/Uncompahgre Plateau	4#PLS/acre
bottlebrush squirreltail ( <i>Elymus elymoides</i> ), varieties Colorado Ecotype/Toejam	8#PLS/acre
needleandthread ( <i>Stipa comata</i> )	10#PLS/acre

Wildflower Seed Species 4#PLS/acre

Rocky Mtn Penstemon (*Penstemon strictus*)  
 Firecracker Penstemon (*Penstemon eatonii*)  
 Blue Flax (*Linum perenne lewisii*)  
 Annual Sunflower (*Helianthus annuus*)  
 Silver Lupine (*Lupinus argenteus*)  
 Golden Banner (*Thermopsis divaricarpa*)  
 Rocky Mountain Bee Plant (*Cleome serrulata*)

Annual Species

Barley ( <i>Hordeum vulgare</i> )	80#PLS/acre
Wheat ( <i>Triticum aestivum</i> x <i>Secale cereale</i> )	80#PLS/acre
Oats ( <i>Avena sativa</i> )	80#PLS/acre

Only Colorado certified weed-free seed mixes and mulches may be used. The operator must provide certification tags or copies to the FS, preferably prior to application. Native trees, shrubs, or forbs may be used on some occasions if agreed to by the FS and the operator

- (c) Soil Erosion Standard: The soil erosion component will be considered successful when gully erosion is absent, and sheet and rill erosion is absent or minimal (less than 5% of the site shows evidence of sheet and rill erosion in the form of pedestalled plants, sediment accumulation, or rills). Bare soil may be present on the reclaimed sites as comparable, relatively undisturbed adjacent sites naturally display bare soil.
- (d) Noxious Weed Standard: The noxious weed component will be considered successful when noxious weeds are absent on the reclaimed site. Noxious weeds shall be treated on all areas disturbed by this project, as necessary to eradicate weeds during the course of operations and reclamation, as described below:
  - (i) The operator shall conduct a project area pre-disturbance noxious weed inventory to establish baseline conditions and assist the development of appropriate noxious weed management strategies.
  - (ii) The operator shall employ any cleaning methods necessary to ensure that

any equipment, including transportation, construction, heavy maintenance and workover equipment, is free of noxious weed material before project implementation.

- (iii) The operator shall control, contain, and eradicate noxious weeds (as applicable) on all areas disturbed by this project during the course of construction, operation, and reclamation. Additional noxious weed management guidance can be obtained from the FS representative.
- (iv) Seed certification tags from the seed bags used for revegetation shall be submitted to the FS within 1 month following seed application. When straw, mulch or gravel is needed for construction, operation or reclamation activities, these materials must be certified to be weed-free, and a copy of the certification must be provided to the FS representative to be included in the project record.

## **Fire Plan for Industrial Operations San Juan National Forest**

This plan outlines the Operator's responsibilities for fire prevention and suppression activities within the Operator's project area. For the purposes of this provision, the project area is defined as the area within one half mile ( 0.5 miles ) of the project boundary.

### **Fire Precautions (9/93)**

#### **I. SMOKING AND LUNCH FIRE RESTRICTIONS**

Smoking is prohibited except inside a building, developed recreation site, vehicle, or while seated in an area of at least three feet in diameter that is barren or cleared of all flammable materials. 36 CFR 261.52(d), 42 CFR 9212(a).

The building of camp, lunch, warming and other fires within the project area and vicinity is prohibited, except at established camps or at other safe places where all flammable material has been cleared away sufficiently to prevent the start and spread of wildfires. The FS representative may, upon written request, designate specific places where campfires may be built for purposes of heating lunches.

#### **II. SPARK ARRESTERS AND MUFFLERS**

Operating or using any internal combustion engine, on any timber, brush, or grass covered land, including trails and roads traversing such land, without a spark arrester, is prohibited. The spark arrester must be maintained in effective working order, meeting either (1) Department of Agriculture, Forest Service standard 5100, *Spark Arresters for Internal Combustion Engines* (current edition); or (2) the Society of Automotive Engineers (SAE) recommended Practices J335, *Multiposition Small Engine Exhaust System Fire Ignition Suppression* (current revision), and J350, 36 CFR 261.52(j), 43 CFR 9212.1(h).

Passenger vehicles, pickups, medium and large highway trucks (80,000 GVW) will be equipped with a factory designed muffler system which is specified for the make and model of the respective vehicle/truck or with a muffler system that is equivalent or that exceeds factory specifications.

Exhaust systems shall be properly installed and continually maintained in serviceable condition.

#### **III. FIRE EXTINGUISHERS AND TOOLS ON EQUIPMENT**

While in use, each piece of equipment with an internal combustion engine shall be provided with at least the following:

1. One fire extinguisher, at least 5# ABC with an Underwriters Laboratory (UL) rating of 3A – 40BC, or greater.
2. One shovel, sharp, size 0 or larger, round-pointed with an overall length of at least 48 inches.
3. One axe, sharp, double bit 3½#, or one sharp Pulaski.

Extinguishers, shovels, axes, and Pulaski's shall be mounted so they are readily available to the operator. All tools shall be maintained in a serviceable condition.

#### **IV. POWER SAWS**

Each gasoline engine power saw shall be provided with one chemical-pressurized fire extinguisher of not less than 8-ounce capacity by weight, and one size 0 or larger, round-pointed shovel with an overall length of at least 48 inches. The extinguisher and shovel shall be maintained in good working order. The extinguisher shall be with the power saw operator and immediately available for use at all times. The extinguisher shall not be affixed to the saw. The shovel shall be readily available to the operator of the saw at all times. Having the shovel with the gas can used to refuel the saw may be considered "readily available" if not more than 200 feet from the saw. During periods of critical fire danger, the FS may prescribe other precautionary measures.

Any fueling or refueling of a power saw shall be done in an area which has first been cleared of material which will carry fire. The power saw shall be moved at least 10 feet from the place of fueling or refueling before starting.

#### **V. BLASTING AND WELDING**

The use of fuses in blasting shall not be permitted except near power lines where the danger of accidental detonation is present, and then only by special written permission of the FS. Whenever the relative humidity falls below 50 percent, the Operator shall place a watchman at each point where blasting is done who shall remain on duty for at least one hour after blasting is finished, and who shall be equipped with a shovel and a water-filled backpack can equipped with hand pump. During periods when the relative humidity falls below 20 percent, blasting shall be discontinued unless authorized, with special provisions, in writing by the FS. Blasting shall not be permitted in any area not cleared to mineral soil without advance written approval of the FS and with such special precautions as may be required.

Prima Cord shall not be used in clearing operations, and in other areas where timber has been felled and slash not burned.

Unless otherwise directed in writing by the FS, all flammable material shall be cleared for 10 feet around any piece of equipment being welded. In addition, the Operator shall provide a fire extinguisher of a size and type designed to extinguish a fire in the flammable materials surrounding the spot being welded.

In order to determine the relative humidity, the operator shall either (a) provide and maintain weather instruments that will measure relative humidity in the area where the blasting will occur; or (b) provide communications to obtain weather data from the FS.

Explosives shall be stored at all times in a locked box marked "Explosives". Powder and blasting caps shall be stored in separate boxes.

#### **VI. STORAGE OF FLAMMABLES**

Gasoline, oil, grease and other highly flammable material shall be stored either in a separate building, or at a site where all debris is cleared within a radius of 25 feet. Storage buildings or sites shall be a minimum distance of 50 feet from other structures. Storage buildings shall be adequately posted to warn of the flammables and to prohibit smoking in or around the building.

#### **VII. CAMP FIRE PROTECTION**

The ground around all trailers, buildings, and other facilities constructed or placed on or near the project area shall be kept free of flammable material for a distance of at least 20 feet from the wall of such structure. Burning of such flammable material shall be as prescribed by the FS in writing. Stovepipes of all wood burning stoves shall be equipped with suitable roof jacks and serviceable spark arresters. Stovepipes shall be no closer than 2 feet from any wood or other flammables unless adequately protected by metal or asbestos shield.

#### **Fire Precautions and Control**

##### **I. PLANS**

Prior to initiating the Operator's operations during the Fire Precautionary Period, which is from **May 15** thru **October 1**, the Operator shall file with the FS a Fire Prevention and Control Plan providing for the prevention and control of fires on the project area. The Plan shall include a detailed list of personnel and equipment at the Operator's disposal for implementing the Plan. This requirement may be met by preparing a single Plan for more than one project.

##### **II. FIRE PRECAUTIONS**

Specific Fire Precautionary measures listed shall be applicable during the Operator's operations in the Fire Precautionary Period. The Contracting Officer may change the dates of the Fire



Precautionary Period by advance written notice, if justified by unusual weather or other conditions. Required tools and equipment shall be kept in serviceable condition and immediately available for fire fighting at all times during the Operator's operations in the Fire Precautionary Period.

**A. Substitute Precautions**

The FS may authorize substitute measures or equipment, or waive specific requirements by written notice, if substitute measures or equipment will afford equal protection, or some of the required measures and equipment are unnecessary.

**B. Emergency Precautions**

The FS may require the necessary shutting down of equipment on portions of the Operator's operations when emergency fire precautions are necessary. Under such conditions, after the Operator ceases active operations, the Operator shall release for hire by the FS, if needed, shutdown equipment for fire standby on the project area and personnel for fire standby or fire patrol, when such personnel and equipment are not needed by the Operator for other fire fighting or protection from fire. Equipment shall be paid for at fire fighting equipment rates common in the area or at prior agreed rates and, if Operator requests, shall be operated only by personnel approved by the Operator. Personnel so hired shall be subject to direction and control by the FS and shall be paid by the FS at fire fighting rates common in the area or at prior agreed rates.

**III. FIRE CONTROL**

The Operator shall, both independently and in cooperation with the FS, take all reasonable and practicable action to prevent and suppress fires resulting from the Operator's operations and to suppress any forest fire on the project area. The Operator's independent initial fire suppression action on such fires shall be immediate and shall include the use of all necessary personnel and equipment at the Operator's disposal on the project area.

**A. Operator's Reinforcement Obligations**

Whenever an Operations Fire or Negligent Fire, whether on or off the project area, or any other forest fire on the project area, has not been suppressed by initial action and appreciable reinforcement strength is required, the FS may require further actions by the Operator until such fire is controlled and mopped up to a point of safety. Such actions may include any or all of the following as necessary to fight such fire:

**1) Suspend Operations**

To suspend any or all of the Operator's operations.

**2) Personnel**

To release for employment by the FS any or all of the Operator's personnel engaged in the Operator's operations. Any organized crew so hired shall include the Operator's supervisor, if any. Personnel so employed shall be paid at the FS standard emergency fire fighting rates.

**3) Equipment**

The Operator shall make available for rental to the FS any or all equipment suitable for fire fighting and currently engaged in the Operator's project area. The equipment shall be hired at firefighting equipment rates common in the area or at prior agreed rates.

Equipment shall be operated only by personnel approved by the Operator, if so requested by the Operator.

**IV. FIRE SUPPRESSION COSTS**

The Operator's obligations for cost of fire suppression vary according to three classifications of fires as follows:

**A. Operations Fire**

An Operations Fire is a fire caused by the Operator's operations other than a Negligent Fire.

The FS, except as provided in Section III, shall, under 16 USC 572, perform fire suppression activities on Operations Fires. The Operator agrees to reimburse the FS for such cost for each Operations Fire. The cost of the Operator's actions, supplies, and equipment on any such fire provided pursuant to Section III, or otherwise at the request of the FS, shall be credited toward such maximum. If the Operator's actual cost exceeds the Operator's obligation stated above, the FS shall reimburse the Operator for the excess.

**B. Negligent Fire**

A Negligent Fire is a fire caused by negligence or fault of the Operator's operations, including, but not limited to, one caused by smoking by persons engaged in the Operator's operations during the course of their employment, or during rest or lunch periods; or if the Operator's failure to comply with the requirements of Sections II and III results in a fire starting or permits a fire to spread. Damages and the cost of suppressing Negligent Fires shall be borne by the Operator.

**C. Other Fires on Project Area**

The FS shall pay the Operator, at fire fighting rates common in the area or at prior agreed rates, for equipment or personnel furnished by the Operator pursuant to Section III, or otherwise at the request of the FS, on any fire on the Project area other than an Operations Fire or a Negligent Fire.

**V. STATE LAW**

The Operator shall not be relieved by the terms of this contract of any liability to the United States for fire suppression costs recoverable in an action based on State law, except for such costs resulting from Operations Fires. Amounts due the Operator for fire fighting expenditures in accordance with BT7.41 shall not be withheld pending settlement of any such claim or action based on State law.

**VI. PERFORMANCE BY OPERATOR**

Where the Operator's employees, agents, Operators, subcontractors, or their employees or agents perform the Operator's operations in connection with fire responsibilities, the Operator's obligations shall be the same as if performance was by the Operator.

**Should Fire Restrictions become necessary, the following describes the stage levels.**

**I. STAGE I AND STAGE II FIRE RESTRICTIONS**

There will be two fire restriction stages: Stage I and Stage II. Stage III denotes area closure. Each agency within a fire restriction area must write its own agency document that authorizes the restrictions within its jurisdiction. Each agency is responsible for using its own format, citing the specific codes of Federal Regulation (CFR) and United States Code (U.S.C.) and having the appropriate legal counsel review the document to assure it is correct and enforceable. To establish consistency, reduce confusion and standardize restrictions, the following criteria will be used in all restriction documents:

**A. STAGE I** The following acts are prohibited until further notice:

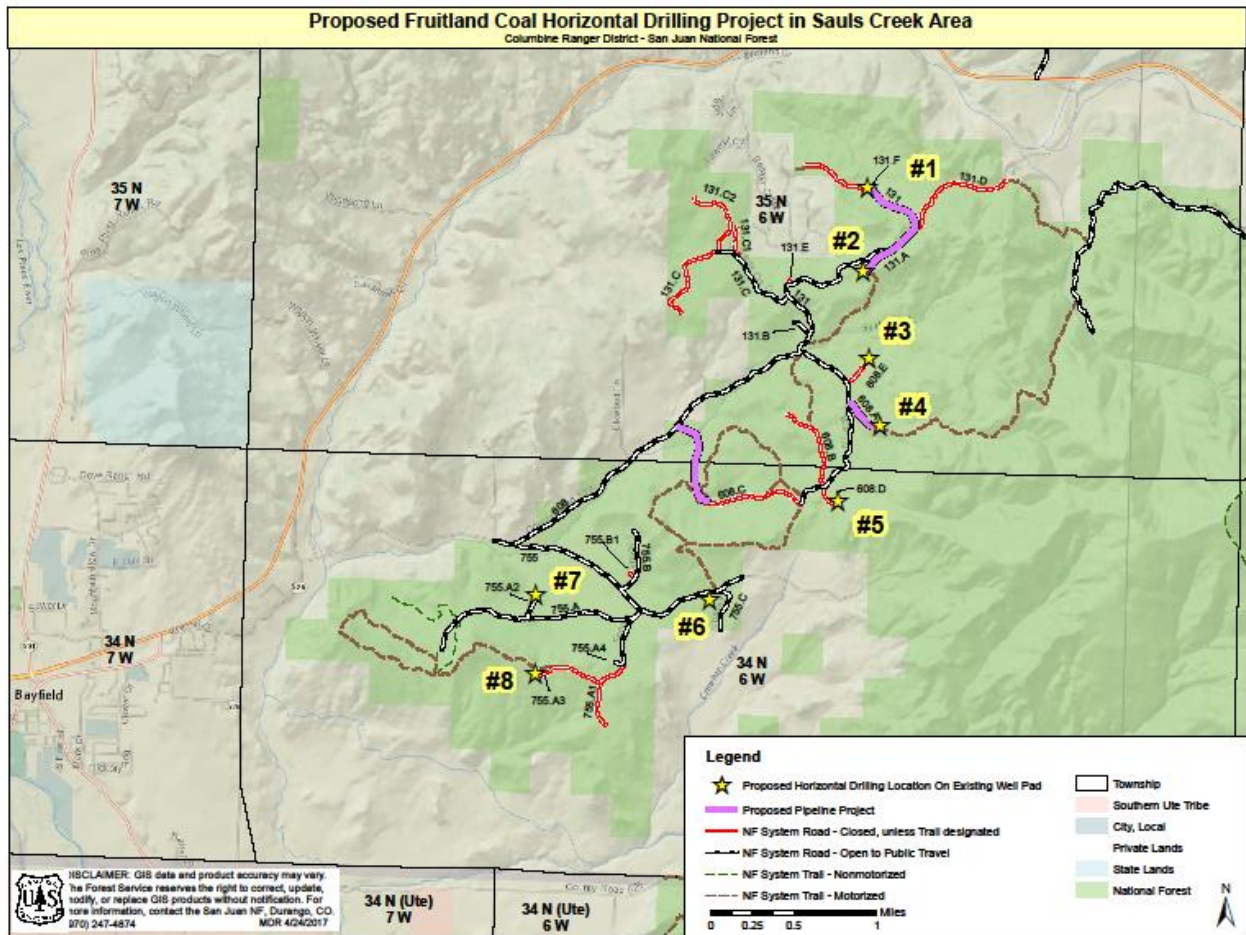
- 1) Building, maintaining, attending, or using a fire, campfire, coal or wood burning stove, any type of charcoal fueled broiler or open fire of any type in undeveloped areas.
- 2) Smoking, except within an enclosed vehicle or building, in a developed recreation site or while stopped in an area at least 3 feet in diameter that is barren or cleared of all flammable vegetation.

- 3) Using explosive material: (i.e.: fireworks, blasting caps or any incendiary device which may result in the ignition of flammable material.)
  - 4) Welding, or operating acetylene or other similar torch with open flame.
  - 5) Operating or using any internal combustion engine without a spark arresting device properly installed, maintained and in effective working order meeting either:
    - (a) Department of Agriculture, FS Standard 5100-1a; or
    - (b) Appropriate Society of Automotive Engineers (SAE) recommended practice J335 (b) and J350 (a).
  - 6) Possible Exemptions
    - (a) Persons with a written permit specifically authorizing the otherwise prohibited act or omission.
    - (b) Fires in constructed, permanent fire pits or fire grates within developed recreation sites.
    - (c) Any Federal, State, or local officer or member of an organized rescue or firefighting force in the performance of an official duty.
    - (d) Mechanical stoves and appliances fueled by bottled or liquid gas which allow the operator to control or extinguish the flame with a valve are permitted provided that such devices are approved by Underwriters laboratory Inc.
    - (e) Owners or lessees of land in the restricted area.
    - (f) Residents in the restricted area.
- B. **STAGE II** The following acts are prohibited until further notice:
- 1) Building, maintaining, attending, or using a fire, campfire, coal or wood burning stove, any type of charcoal fueled broiler or open fire of any type.
  - 2) Smoking, except within an enclosed vehicle or building.
  - 3) Using explosive material: (i.e.: fireworks, blasting caps or any incendiary device which may result in the ignition of flammable material.)
  - 4) Welding, or operating acetylene or other similar torch with open flame.
  - 5) Operating or using any internal combustion engine without a spark arresting device properly installed, maintained and in effective working order meeting either:
    - (a) Department of Agriculture, FS Standard 5100-1a; or
    - (b) Society of Automotive Engineers (SAE) recommended practice J335 (b) and J350 (a).
  - 6) Operating a chainsaw without a chemical pressurized fire extinguisher of not less than 8 ounces capacity by weight, and one size 0 or larger round pointed shovel with an overall length of at least 36 it was 48" above inches. The extinguisher shall be with the chainsaw operator. The shovel may be kept with the fueling supplies but readily available.
  - 7) Other possible restricted acts under Stage II
    - (a) Operating a motorized vehicle off designated roads and trails.
    - (b) Operating a chainsaw outside the hours of 5 a.m. and 11 p.m.
    - (c) Overnight camping limited to listed campgrounds and recreation sites.
  - 8) Possible Exemptions
    - (a) Persons with a written permit specifically authorizing the otherwise prohibited act or omission.
    - (b) Any Federal, State or local officer or member of an organized rescue or firefighting force in the performance of an official duty.

- (c) Mechanical stoves and appliances fueled by bottled or liquid gas which allow the operator to control and extinguish the flame with a valve are permitted provided that such devices are approved by Underwriters Laboratory Inc.
- (d) Owners or lessees of land in the restricted area.
- (e) Residents in the restricted area.

**C. Stage III Fire Restrictions**

- 1) Before the fire season, the “Council” will review the evaluation guidelines and determine threshold levels that substantiate the need for closures.
- 2) Examples include:
  - (a) Potential loss of life due to explosive fire conditions.
  - (b) Potential for extreme or blowup fire behavior.
  - (c) Stage I or Stage II restrictions are not effective in reducing the number of human-caused fires.
  - (d) Resources across the geographic area are at a critical shortage level.
  - (e) Proximity to substantial population centers.
  - (f) The extent of wildland-urban interface.



Location #	Existing Gas Well SUPO Amendments	Existing Pad Size - acres	Expanded Pad Size For Proposed Drilling Project - acres	Short Term Project Disturbance (Expanded Pad Size Minus Existing Pad Size) - acres	Final Pad Size For Production After Drilling - acres	Long Term Project Disturbance (Final Pad Size Minus Existing Pad Size) - acres
1	EAST SAULS CREEK 26 1-1					
1	EAST SAULS CREEK 26 1-2					
1	YANKEE FEDERAL A2 HST	0.682	1.271	0.589	1.049	0.367
2	EAST SAULS CREEK 26 2-1					
2	EAST SAULS CREEK 26 2-2					
2	YANKEE FEDERAL A1 HST	0.766	1.367	0.601	1.051	0.285
3	EAST SAULS CREEK 35 3-1					
3	EAST SAULS CREEK 35 3-2					
3	YANKEE FEDERAL B2 HST	0.783	1.360	0.577	1.027	0.244
4	EAST SAULS CREEK 35 4-1					
4	EAST SAULS CREEK 35 4-2					
4	YANKEE FEDERAL B1 HST	0.704	1.180	0.476	0.964	0.260
5	FISCHER-MARK FEDERAL B3 HST	0.791	1.334	0.543	0.791	0.000
6	FISCHER-MARK FEDERAL B5	0.548	1.086	0.538	0.708	0.160
7	FEDERAL 05-01 1 HST	0.599	0.993	0.394	0.703	0.104
8	FEDERAL 08-01 2 HST	0.720	1.320	0.600	0.720	0.000

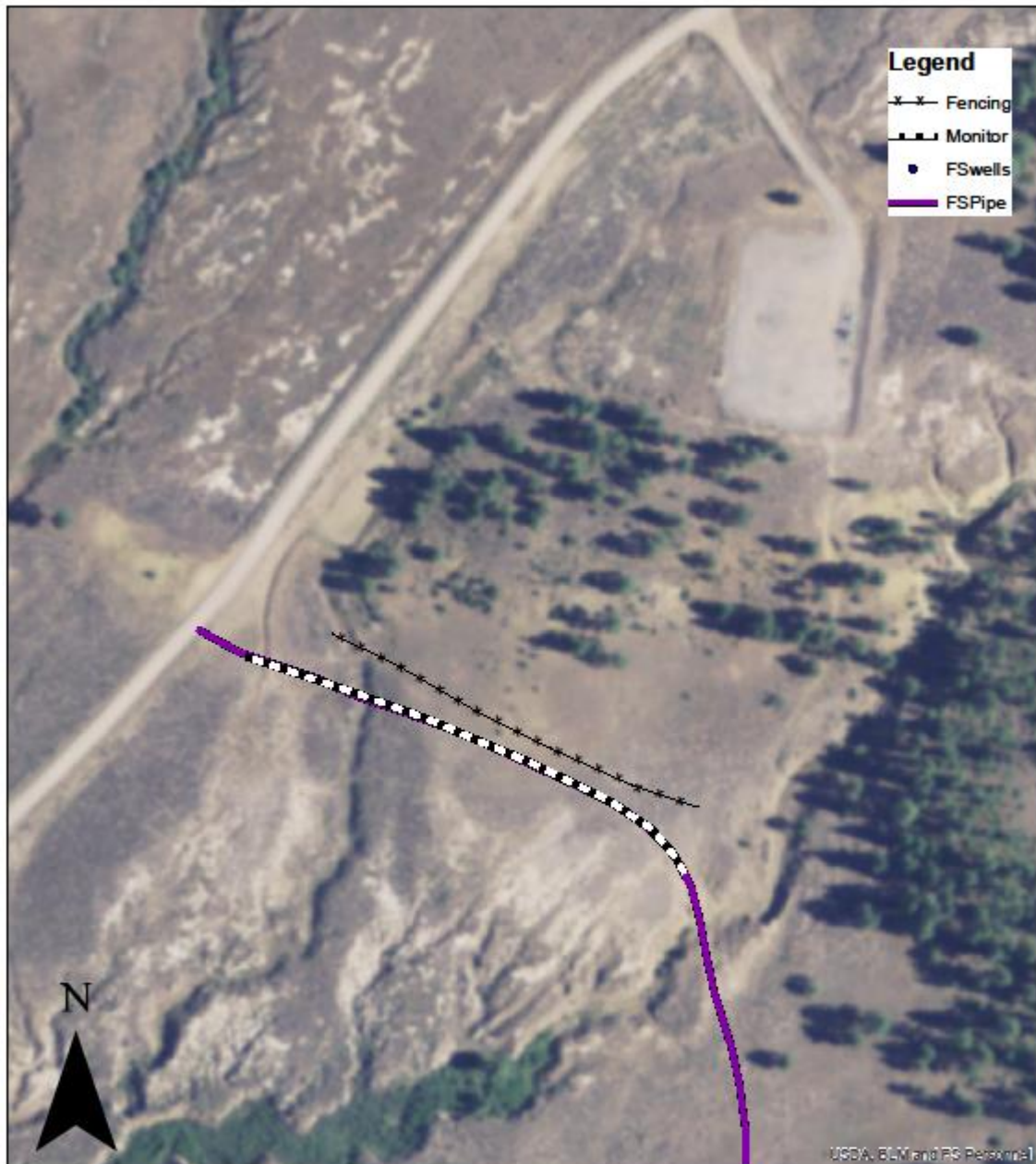
**Total Short Term Disturbance (well pads) ~ 4.32 acres, Total Long Term Disturbance (well pads) ~ 1.42 acres**

Existing Pipeline SUP Amendment	Distance	Existing Permitted Pipeline Corridor Width	Short Term Disturbance Including TUA – acres	Long Term Disturbance – acres	Note
4" Gas Pipeline between Yankee Federal A2 and A1	4,249 ft	40 ft	3.87	0.000	Pipeline is in the existing road corridor, assumes 20 ft width
4" Gas Pipeline between Yankee Federal B1 and gathering line	1,345 ft	40 ft	1.24	0.000	Entire ROW will be seeded and interim reclaimed
6" Gas Pipeline between Fischer-Mark Federal B4 to CR 527	2,788 ft	30 ft	2.534	0.000	Entire ROW will be seeded and interim reclaimed

**Total Short Term Project (pipelines) ~ 7.64 acres, Total Long Term Disturbance (pipelines) = 0.0**

**Total Short Term Project Disturbance (well pads + pipeline) = 11.962 acres**

**Total Long Term Project Disturbance (well pads + pipeline) = 1.42 acres**



### Pipeline Mitigation

1:2,000  
PM: New Mexico

