

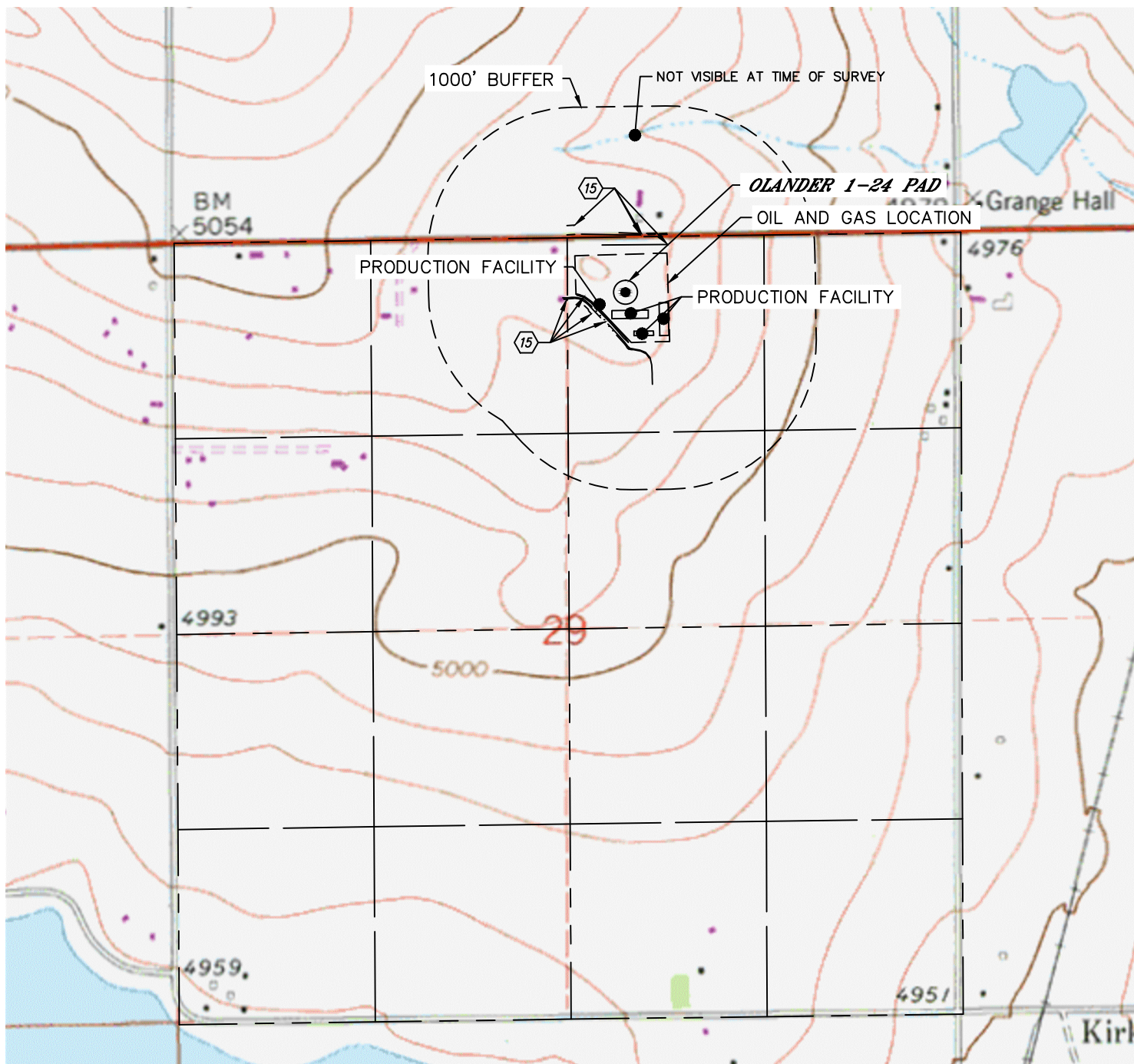


Lat40°, Inc. 6250 W. 10th Street, Unit 2, Greeley, CO 970-515-5294

# HYDROLOGY MAP

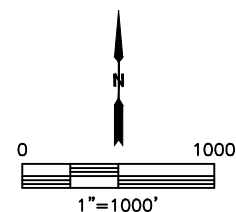
OLANDER PAD

SECTION: 29  
TOWNSHIP: 3N  
RANGE: 68W  
6TH. P.M.  
WELD COUNTY, CO



DISTANCES MEASURED FROM THE EDGE OF THE OIL AND GAS LOCATION.

⬡ DITCH (1) INSIDE LOCATION, 29', 64' & 76' SW,  
60', 127', 136' & 200' N



DATE: 7/19/2017  
PROJECT#: 2017062