



Lat40°, Inc. 6250 W. 10th Street, Unit 2, Greeley, CO 970-515-5294

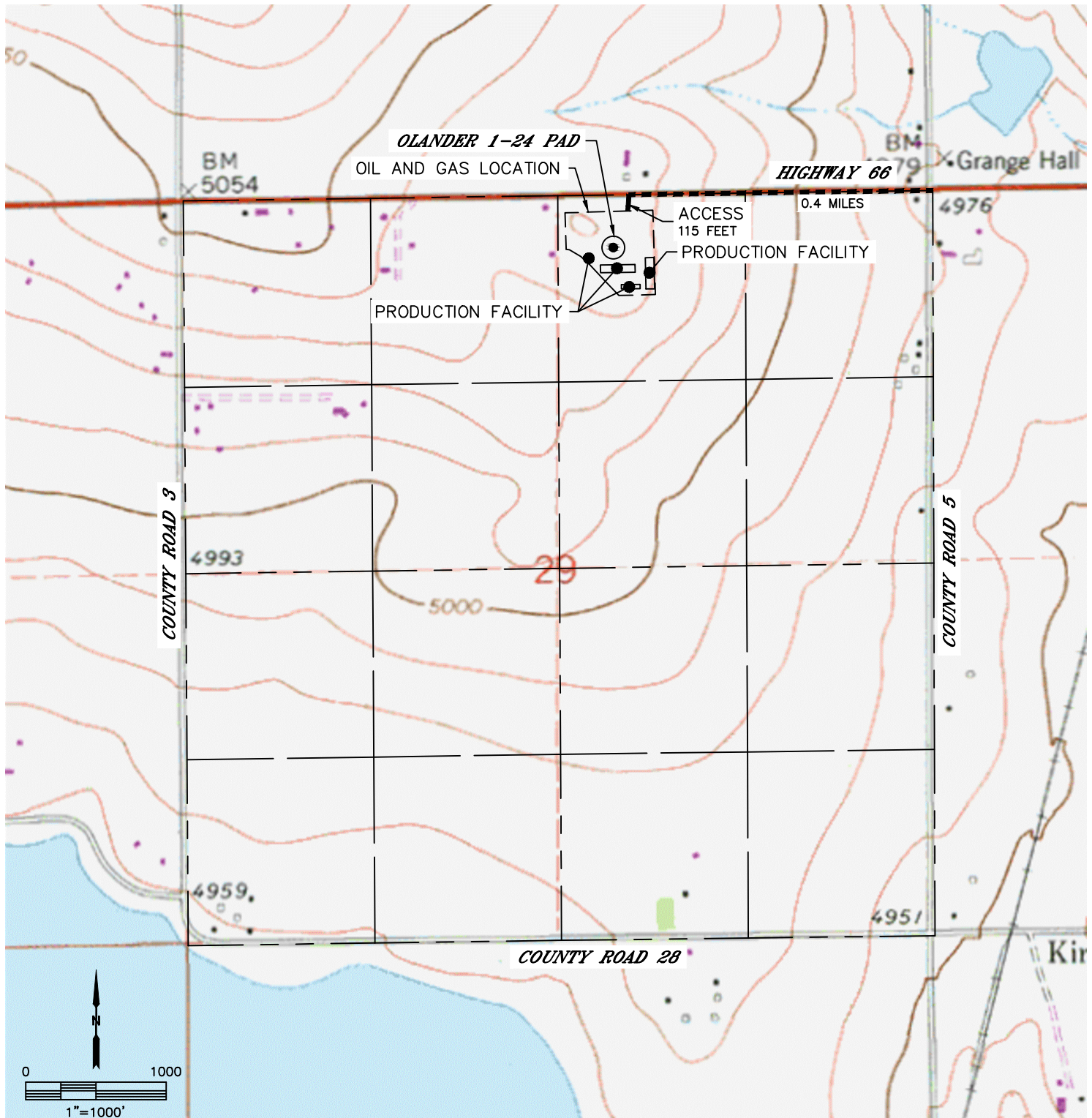
## ACCESS ROAD MAP

**OLANDER PAD**

SECTION: 29  
TOWNSHIP: 3N  
RANGE: 68W  
6TH. P.M.  
WELD COUNTY, CO

### DRIVING DIRECTIONS TO OLANDER 1-24 PAD

FROM THE INTERSECTION OF HIGHWAY 66 AND COUNTY ROAD 5, GO WEST ON HIGHWAY 66 TO AN EXISTING ACCESS TO THE SOUTH. GO SOUTH ON THE EXISTING ACCESS FOR 115 FEET TO THE PROPOSED DRILL PAD AND PRODUCTION FACILITY.





Lat40°, Inc. 6250 W. 10th Street, Unit 2, Greeley, CO 970-515-5294

# ACCESS ROAD MAP

OLANDER PAD

SECTION: 29  
TOWNSHIP: 3N  
RANGE: 68W  
6TH. P.M.  
WELD COUNTY, CO

