

# CASTOR FED 8-59 19-24-6 WELL LOCATION CERTIFICATE

NW COR. SEC. 19  
2 1/2" ALUM. CAP  
RLS 26294, 2008

S89°01'06"E 2702.32'

S89°01'06"E 2629.78'

NE COR. SEC. 19  
2 1/2" ALUM. CAP  
RLS 26964, 2007

BASIS OF BEARINGS  
(SEE NOTE 2)  
N01°09'43"E 2652.14'

**NOTES:**  
BH LOCATION PROVIDED BY CLIENT.  
LAND SURFACE USE-RANGELAND  
SEE LOCATION DRAWING FOR ADDITIONAL  
IMPROVEMENTS WITHIN 500'

PDOP=1.9  
GPS OPERATOR: MICHAEL HERNANDEZ

N 1/4 COR. SEC. 19  
2 1/2" ALUM. CAP  
PLS 28285, 2012

LP: 1849' FNL  
600' FEL

BHL: 1849' FNL  
2340' FEL

W 1/4 COR. SEC. 19  
2 1/2" ALUM. CAP  
CO 17492, 2011

N01°09'44"E 2652.12'

LOT 3

**SURFACE LOCATION:**  
GROUND ELEVATION=4860'  
NAD83  
LATITUDE: 40.644568° N  
LONGITUDE: 104.012531° W

**LANDING POINT LOCATION:**  
NAD83  
LATITUDE: 40.650029° N  
LONGITUDE: 104.012588° W

LOT 4

**BOTTOM HOLE LOCATION:**  
NAD83  
LATITUDE: 40.650239° N  
LONGITUDE: 104.038144° W

SW COR. SEC. 19  
2 1/2" ALUM. CAP  
R.M. 100' NW, NE  
CO 17492, 2011

N88°53'26"W 2744.62'

S 1/4 COR. SEC. 19  
2 1/2" ALUM. CAP  
PLS 28285, 2012

N88°53'27"W 2637.70'

SE COR. SEC. 19  
3 1/4" ALUM. CAP  
PLS 10740, 1990

## LEGEND

- ⊕ = EXISTING MONUMENT
- = CALCULATED POSITION
- = PROPOSED WELL
- ⬮ = BOTTOM HOLE
- ▲ = LANDING POINT
- LP = LANDING POINT
- BHL = BOTTOM HOLE LOCATION

## NOTES

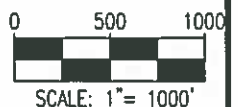
- THIS FIELD SURVEY CONFORMS TO THE MINIMUM STANDARDS SET BY THE C.O.G.C., RULE NO. 215
- BEARINGS ARE BASED ON THE ASSUMPTION THAT THE WEST LINE OF THE NORTHWEST QUARTER OF SECTION 19, BEARS N01°09'43"E BETWEEN THE MONUMENTS SHOWN HEREON.
- ALL DISTANCES AND BEARINGS SHOWN HEREON ARE GROUND VALUES AS GPS MEASURED IN THE FIELD, WITH TIES TO WELLS MEASURED PERPENDICULAR TO SECTION LINES. THIS LOW DISTORTION PROJECTION (LDP) IS BASED ON THE NORTH AMERICAN DATUM OF 1983, U.S. SURVEY FOOT WITH A LATITUDE ORIGIN OF 40.655085°N, A CENTRAL MERIDIAN LONGITUDE OF 104.086861°W, AND A SCALE FACTOR ON THE CENTRAL MERIDIAN OF 1.000232 (EXACT). THE LDP BASIS OF BEARINGS IS GEODETIC NORTH.
- FIELD VERIFICATION OF MONUMENTS COMPLETED WITHIN 1 YEAR OF SIGNATURE DATE.

NOTICE: ACCORDING TO COLORADO LAW YOU MUST COMMENCE ANY LEGAL ACTION BASED UPON ANY DEFECT IN THIS SURVEY WITHIN THREE YEARS AFTER YOU FIRST DISCOVER SUCH DEFECT. IN NO EVENT MAY ANY ACTION BASED UPON ANY DEFECT IN THIS SURVEY BE COMMENCED MORE THAN TEN YEARS FROM THIS SAID DATE OF THIS CERTIFICATION SHOWN HEREON.

**WELL CASTOR FED 8-59 19-24-6 TO BE  
LOCATED 1476' FSL & 560' FEL**

I, MICHAEL L. POOL, A LICENSED PROFESSIONAL LAND SURVEYOR IN THE STATE OF COLORADO DO HEREBY CERTIFY TO BISON OIL & GAS 2, LLC, THAT THE SURVEY AND WELL LOCATION CERTIFICATE SHOWN HEREON WERE DONE BY ME OR UNDER MY DIRECT SUPERVISION AND THAT THE DRAWING SHOWN HEREON ACCURATELY DEPICTS THE PROPOSED LOCATION OF THE WELL. THIS CERTIFICATE DOES NOT REPRESENT A LAND SURVEY PLAT OR IMPROVEMENT SURVEY PLAT AS DEFINED BY C.R.S. 38-51-102 AND CANNOT BE RELIED UPON TO DETERMINE OWNERSHIP.

MICHAEL L. POOL, PLS 38304  
COLORADO LICENSED PROFESSIONAL LAND SURVEYOR  
FOR AND ON BEHALF OF P.F.S., LLC



SHEET 1 OF 2

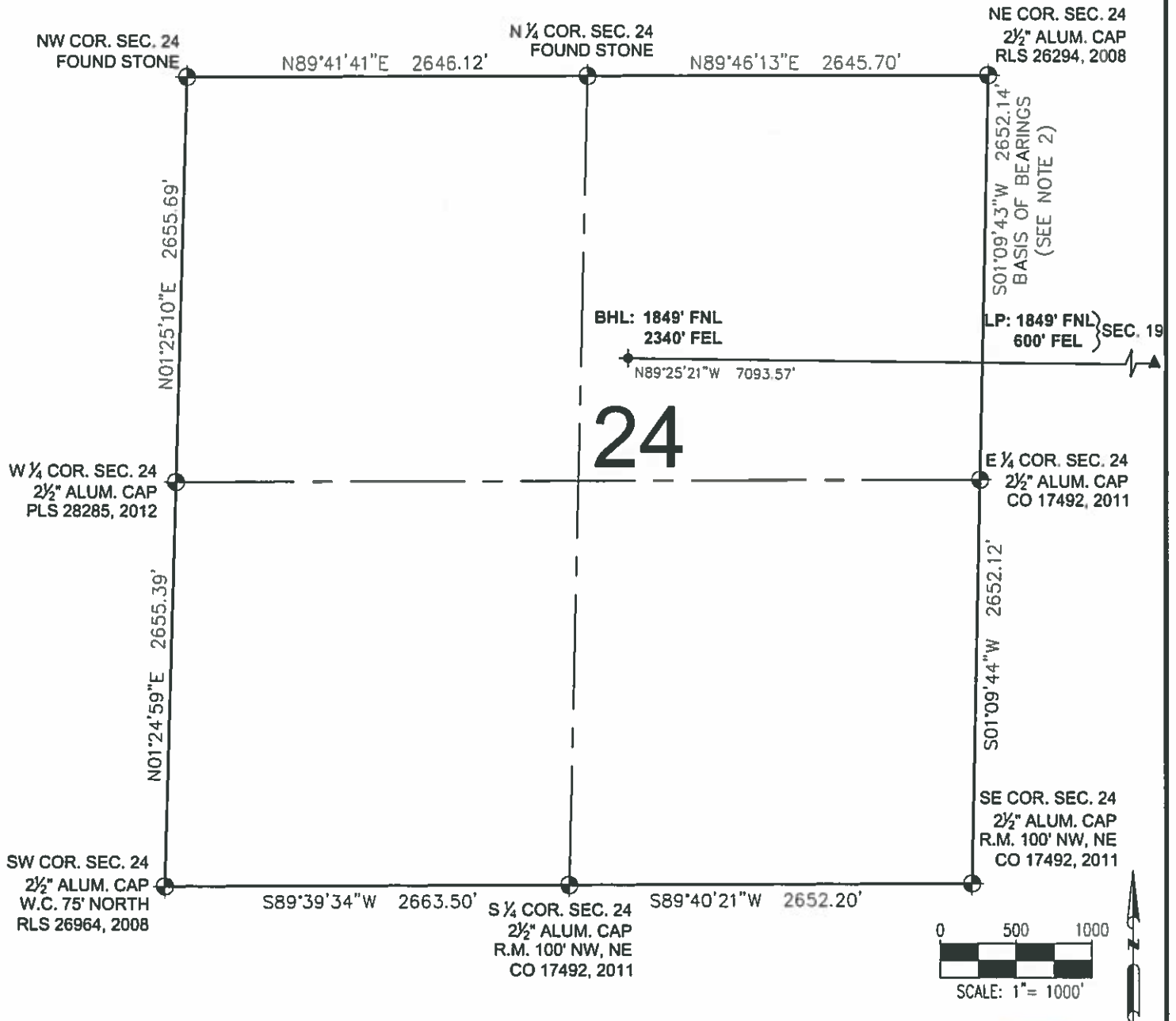


FIELD DATE  
06-28-17  
DRAWING DATE  
07-05-17  
BY: MAG  
CHECKED: CLP

WELL NAME:  
CASTOR FED 8-59 19-24-6  
SURFACE LOCATION:  
NE 1/4 SE 1/4 SEC. 19, T8N, R59W, 6TH P.M.  
WELD COUNTY, COLORADO



# CASTOR FED 8-59 19-24-6 WELL LOCATION CERTIFICATE



## LEGEND

- ⊕ = EXISTING MONUMENT
- ⬮ = CALCULATED POSITION
- = PROPOSED WELL
- ⬮ = BOTTOM HOLE
- ▲ = LANDING POINT
- LP = LANDING POINT

MICHAEL L. POOL, PLS 38304  
COLORADO LICENSED PROFESSIONAL LAND SURVEYOR  
FOR AND ON BEHALF OF P.F.S., LLC



SHEET 2 OF 2



FIELD DATE  
06-28-17

DRAWING DATE  
07-05-17

BY: MAG  
CHECKED: CLP

WELL NAME  
CASTOR FED 8-59 19-24-6

SURFACE LOCATION:

NE 1/4 SE 1/4 SEC. 19, T8N, R59W, 6TH P.M.  
WELD COUNTY, COLORADO

PREPARED FOR

