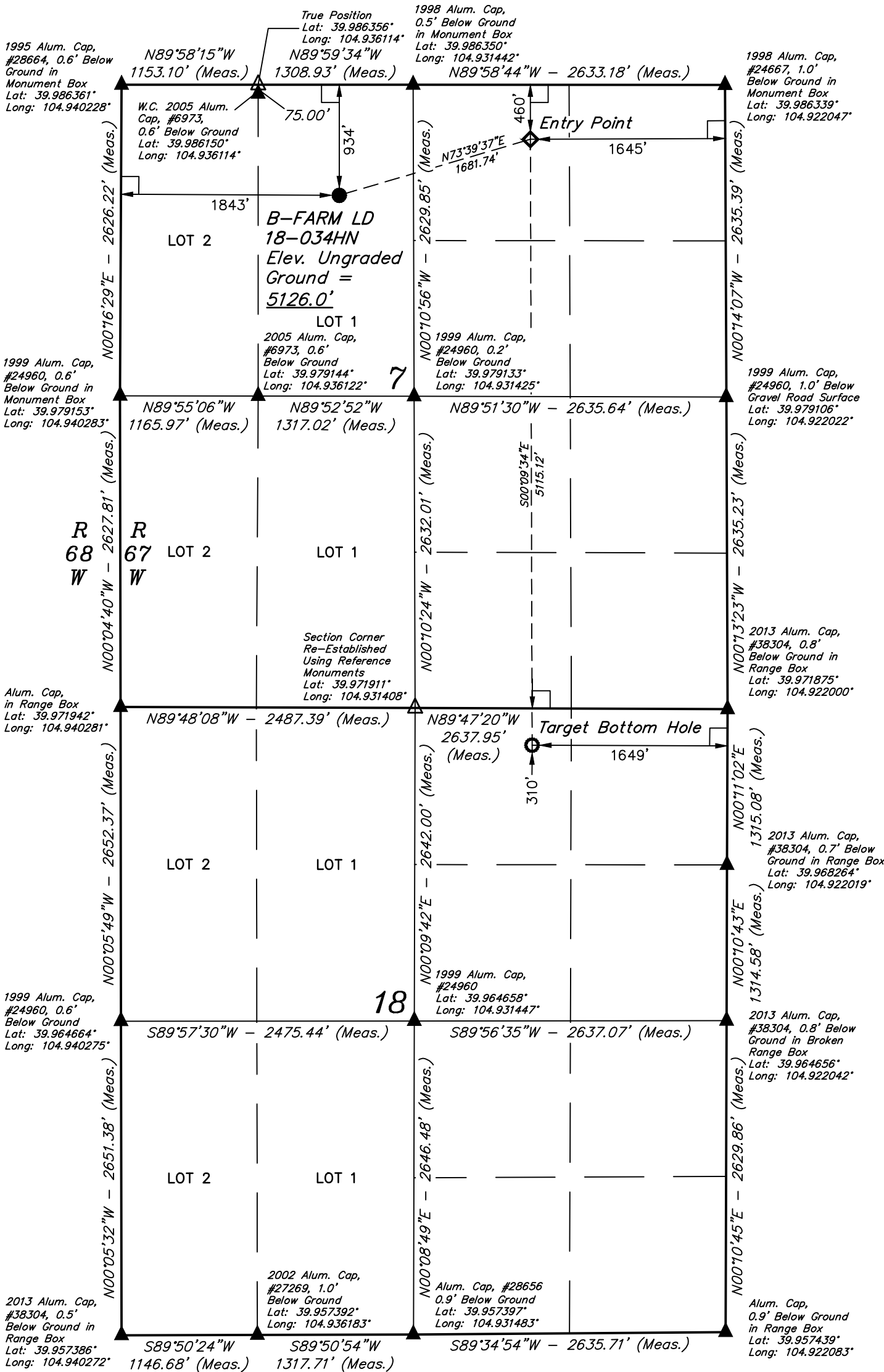


LEGEND:

- = 90° SYMBOL.
- = PROPOSED WELLHEAD.
- = TARGET BOTTOM HOLE.
- = ENTRY POINT.
- = SECTION CORNERS LOCATED. (NAD 83)
- = SECTION CORNERS RE-ESTABLISHED. (Not Set on Ground.) (NAD 83)

T1S, R67W, 6th P.M.



PDOP = 1.5



NAD 83 (SURFACE LOCATION)	NAD 83 (ENTRY POINT)	NAD 83 (TARGET BOTTOM HOLE)
LATITUDE = 39°59'01.65" (39.983792)	LATITUDE = 39°59'06.30" (39.985083)	LATITUDE = 39°58'15.76" (39.971044)
LONGITUDE = 104°56'01.22" (104.933672)	LONGITUDE = 104°55'40.48" (104.927911)	LONGITUDE = 104°55'40.39" (104.927886)
NAD 27 (SURFACE LOCATION)	NAD 27 (ENTRY POINT)	NAD 27 (TARGET BOTTOM HOLE)
LATITUDE = 39°59'01.70" (39.983806)	LATITUDE = 39°59'06.36" (39.985100)	LATITUDE = 39°58'15.82" (39.971061)
LONGITUDE = 104°55'59.30" (104.933139)	LONGITUDE = 104°55'38.57" (104.927381)	LONGITUDE = 104°55'38.47" (104.927353)

BASIS OF BEARINGS

BASIS OF BEARINGS IS A G.P.S. OBSERVATION

BASIS OF ELEVATION

USGS COOPERATIVE BASE NETWORK CONTROL STATION, DESIGNATION "JR 53 5026".
NGS DATA SHEET LISTS THE NAVD 88 ELEVATION AS BEING 5028 FEET.



UELS, LLC
Corporate Office * 85 South 200 East
Vernal, UT 84078 * (435) 789-1017



CERTIFICATE
THIS IS TO CERTIFY THAT THE ABOVE PLAT WAS PREPARED FROM FIELD NOTES OF ACTUAL SURVEYS MADE BY ME OR UNDER MY SUPERVISION, AND THAT THE SAME ARE TRUE AND CORRECT TO THE BEST OF MY KNOWLEDGE AND BELIEF.



REV: 3 10-17-16 M.F.D. (SL, EP, TBH & NAME CHANGE)

GREAT WESTERN OPERATING COMPANY

B-FARM LD 18-034HN
NE 1/4 NW 1/4, SECTION 7, T1S, R67W, 6th P.M.
ADAMS COUNTY, COLORADO

SURVEYED BY	DALLAS NIELSEN, G.W.	03-24-16	SCALE
DRAWN BY	M.F.D.	03-31-16	1" = 1000'

WELL LOCATION PLAT