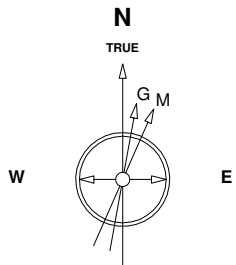


Great Western Operating Company, LLC

Location Colorado
Field Wattenburg
Installation B-Farm
Slot E-14 - B-Farm LD 18-392HC
Well B-Farm LD 18-392HC
Wellbore B-Farm LD 18-392HC (PWB)

Created by admin
Date plotted 10-Nov-2016

Plot reference is B-Farm LD 18-392HC (PWB).
Ref wellpath is B-Farm LD 18-392HC (PWP#1).
Coordinates are in Feet reference E-14 - B-Farm LD 18-392HC.
True Vertical Depths are reference Rig Datum.
Measured Depths are reference Rig Datum.
Rig Datum: Planned Datum #1
Rig Datum to Mean Sea Level: 20.00 ft.
Plot North is aligned to TRUE North.



Scale 1 cm = 300 ft

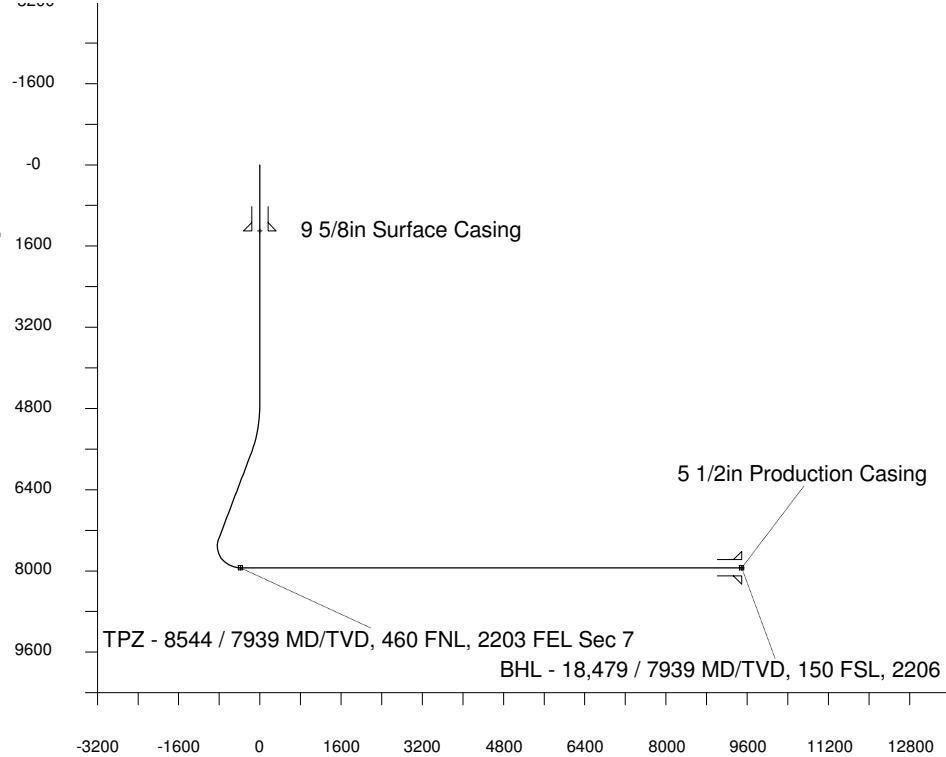
East (Feet) ->

-3600 -3000 -2400 -1800 -1200 -600 0 600 1200 1800 2400 3000 3600 4200

8-Sep-2016
IGRF Model [1900.0-2020.0] Dip: 66.51 deg Field: 52284.8 nT
Lat: N39 59 3.0300 Long: W104 56 2.5008 Elev: 0.00 ft
Magnetic North is 8.35 deg East of TRUE North
To correct azimuth from Magnetic to TRUE add 8.35 deg

<- True Vertical Depth (Feet)

Scale 1 cm



Scale 1 cm = 800 ft

Vertical Section (Feet) ->

Azimuth 173.68 with reference 0.00 N, 0.00 E from E-14 - B-Farm LD 18-392HC

WELL PROFILE DATA

Point	MD	Inc	Azi	TVD	North	East	deg/100ft	V. Sect
Tie on	0.00	0.00	0.00	0.00	S 0.00	W 0.00		0.00
KOP	4721.00	0.00	42.56	4721.00	S 0.00	W 0.00	0.00	0.00
End of Build	5721.13	30.00	42.56	5676.04	N 188.51	E 173.11	9.84	-168.32
End of Hold	7685.29	30.00	42.56	7376.99	N 911.95	E 837.44	0.00	-814.27
Target TPZ - ... Sec 7	8544.04	90.00	180.07	7939.00	N 502.01	E 1056.17	42.65	-382.75
T.D. & Target BHL... 18	18478.84	90.00	180.07	7939.00	S 9432.78	E 1044.25	0.00	9490.41

TPZ - 8544 / 7939 MD/TVD, 460 FNL, 2203 FEL Sec 7

Sec 7 T1S, R67W

Sec 18, T1S, R67W

BHL - 18,479 / 7939 MD/TVD, 150 FSL, 2206 FEL Sec 18

<- North(Feet)

Scale 1 cm = 400 ft