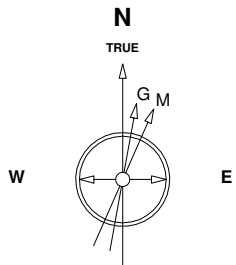


Great Western Operating Company, LLC

Location Colorado
Field Wattenburg
Installation B-Farm
Slot E-15 - B-Farm LD 18-392HN
Well B-Farm LD 18-392HN
Wellbore B-Farm LD 18-392HN (PWB)

Created by admin
Date plotted 10-Nov-2016

Plot reference is B-Farm LD 18-392HN (PWB).
Ref wellpath is B-Farm LD 18-392HN (PWP#1).
Coordinates are in Feet reference E-15 - B-Farm LD 18-392HN.
True Vertical Depths are reference Rig Datum.
Measured Depths are reference Rig Datum.
Rig Datum: Planned Datum #1
Rig Datum to Mean Sea Level: 20.00 ft.
Plot North is aligned to TRUE North.



Scale 1 cm = 300 ft

East (Feet) ->

-3600 -3000 -2400 -1800 -1200 -600 0 600 1200 1800 2400 3000 3600 4200

2400

TPZ - 8260 / 7673 MD/TVD, 460 FNL, 2303 FEL Sec 7

1600

Sec 7 T1S, R67W

800

0

-800

-1600

-2400

-3200

-4000

-4800

-5600

-6400

-7200

-8000

-8800

-9600

-10400

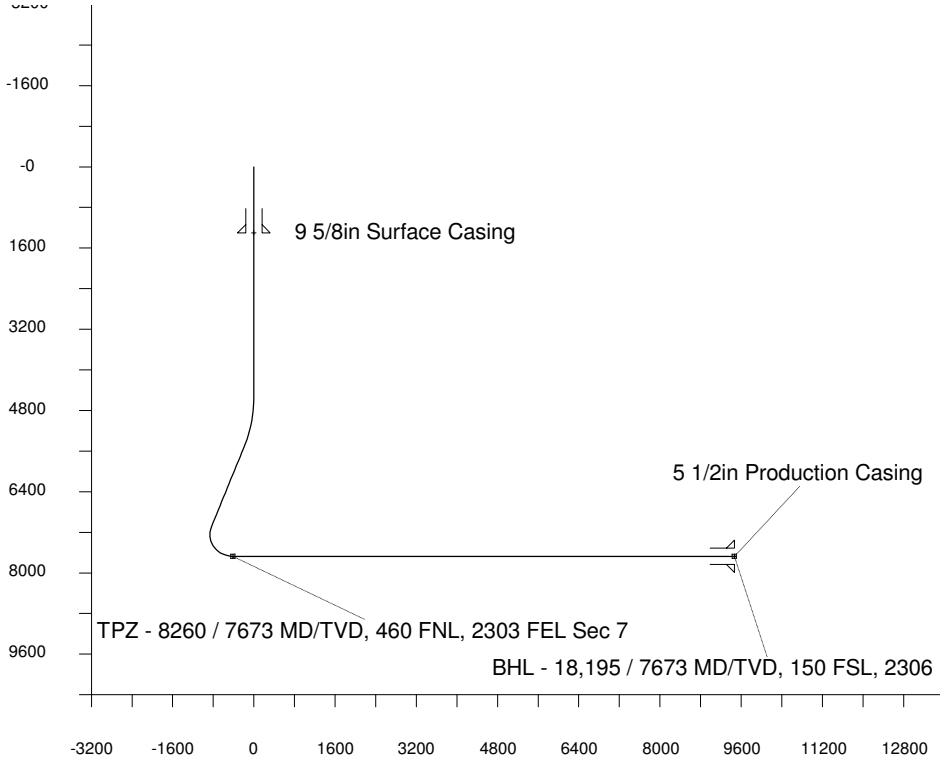
<- North(Feet)

Scale 1 cm = 400 ft

8-Sep-2016
IGRF Model [1900.0-2020.0] Dip: 66.51 deg Field: 52284.8 nT
Lat: N39 59 3.0300 Long: W104 56 2.5008 Elev: 0.00 ft
Magnetic North is 8.35 deg East of TRUE North
To correct azimuth from Magnetic to TRUE add 8.35 deg

<- True Vertical Depth (Feet)

Scale 1 cm



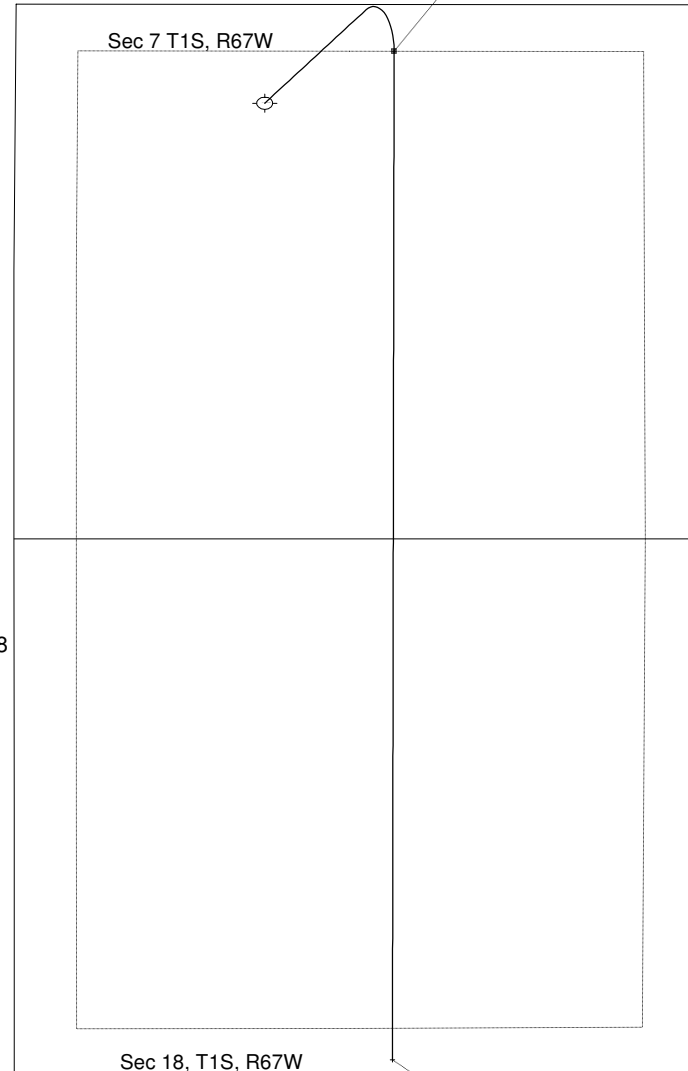
Vertical Section (Feet) ->

Scale 1 cm = 800 ft

Azimuth 174.28 with reference 0.00 N, 0.00 E from E-15 - B-Farm LD 18-392HN

WELL PROFILE DATA

Point	MD	Inc	Azi	TVD	North	East	deg/100ft	V. Sect
Tie on	0.00	0.00	0.00	0.00	S 0.00	W 0.00		0.00
KOP	4536.00	0.00	39.13	4536.00	S 0.00	W 0.00	0.00	0.00
End of Build	5536.07	30.00	39.13	5490.99	N 198.50	E 161.51	9.84	-181.42
End of Hold	7391.75	30.00	39.13	7098.02	N 918.26	E 747.13	0.00	-839.24
Target TPZ - ... Sec 7	8259.80	90.00	180.07	7673.00	N 511.84	E 955.85	42.65	-414.05
T.D. & Target BHL... 18	18194.60	90.00	180.07	7673.00	S 9422.95	E 943.61	0.00	9470.08



Sec 18, T1S, R67W

BHL - 18,195 / 7673 MD/TVD, 150 FSL, 2306 FEL Sec 18